

Celebrating Animals | Confronting Cruelty
Worldwide



**HUMANE SOCIETY
INTERNATIONAL**

hsi.org

A Holistic Approach to Agriculture

Following up on the Durban Decision

Geoff Evans

Humane Society International

21 May 2012

Agriculture's Importance and Challenges

- Future Needs
 - 70% more production by 2050
 - US\$83 billion investment/year in developing country agriculture to 2050
- Affects and affected by climate change
 - Agricultural Emissions:
 - 13.5% (IPCC exclusive of LULUCF)
 - 30% (IAASTD)
 - Negative impacts on food production and security

Durban LCA Decision

D. Cooperative sectoral approaches and sector-specific actions, in order to enhance the implementation of Article 4, paragraph 1(c), of the Convention

General framework

74. *Agrees* to continue its consideration of a general framework for cooperative sectoral approaches and sector-specific actions with a view to adopting a decision on this matter at its eighteenth session, as appropriate;

Agriculture

75. *Requests* the Subsidiary Body for Scientific and Technological Advice to consider issues related to agriculture at its thirty-sixth session, with the aim of exchanging views and the Conference of the Parties adopting a decision on this matter at its eighteenth session;

76. *Invites* Parties and accredited observer organizations to submit to the secretariat, by 5 March 2012, their views on the issues referred to in paragraph 75 above;

77. *Requests* the secretariat to compile submissions referred to in paragraph 76 above by Parties into a miscellaneous document for consideration by the Subsidiary Body for Scientific and Technological Advice at its thirty-sixth session;

Common Themes in the March 5 Agriculture Submissions

- Mitigation and adaptation
 - Independently, as well as with “synergies and tradeoffs”
- Integrated/broad approach, including e.g. food security, biodiversity, sustainable development...
- Tech and Tech Transfer
- SBSTA (work program?)

Key Principles for Holistic Approach

- Including and supporting all stakeholders
- Addressing adaptation and mitigation
 - Independently and for “synergies and tradeoffs”
- Ensuring multiple social and environmental outcomes
- Ensuring consistency across UNFCCC decisions and mechanisms

Farm Animal Welfare and Climate Change

Ensuring Humane and Holistic Solutions

Celebrating Animals | Confronting Cruelty Worldwide



The HSUS



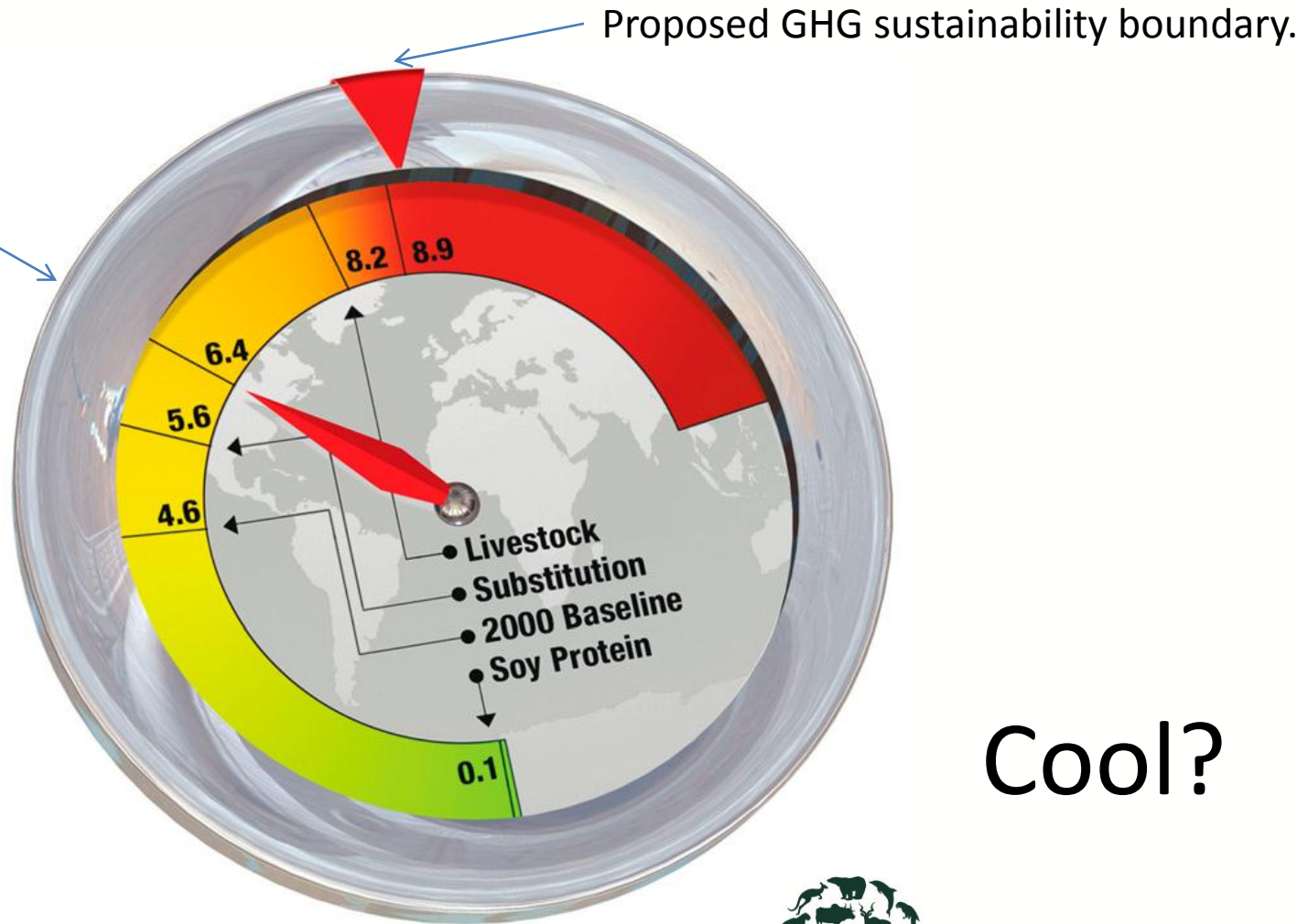
Cary Smith/The HSUS



**HUMANE SOCIETY
INTERNATIONAL**

Celebrating Animals | Confronting Cruelty Worldwide

Animal agriculture projected to emit >70% of sustainable level of global GHG emissions in 2050.



Cool?



HUMANE SOCIETY
INTERNATIONAL

*From Pelletier N and Tyedmers P. 2010. Forecasting potential global environmental costs of livestock production 2000-2050. Proceedings of the National Academy of Sciences of the US 107(43):18371-18374.

Humane and Holistic Solutions

- Evaluate, Enhance, and Safeguard Animal Welfare
 - Support for extensive pasture-based and mixed farming animal agriculture systems led by small farmers, particularly women
 - Further support for welfare improvements in industrial animal production systems

Celebrating Animals | Confronting Cruelty Worldwide



Cary Smith/The HSUS

Thank you!



HUMANE SOCIETY
INTERNATIONAL



HUMANE SOCIETY INTERNATIONAL

hsi.org