



TOUTON

TOUTON'S 3PRCL COCOA LANDSCAPE GOVERNANCE PROJECT

Isabelle Adam – Touton – 14 December 2018



est'd 1848



350 000 MT

Cocoa beans

COCOA BEANS



COCOA PRODUCTS



50 000 MT

Cocoa products

COFFEE



VANILLA & INGREDIENTS



150 000 MT

Green Coffee

150 MT

Vanilla



The Challenge in the Cocoa Supply Chain

- Multiple drivers of deforestation
- Complex landscape/unclear tenure arrangements
- Not all cocoa is sourced directly at farm-level
- Multiple registration of farms by x companies
- Increased encroachment following logging trails
- Hidden Farms in Forest Reserves
- Risk of leakages of illegal cocoa
- So far efforts driven in silos

👉 **Mounting pressure to act now (advocacy groups)**

👉 **Engagement & good will from all parties (CFI)**



Claiming Deforestation Free Supply Chain is a shared responsibility

Private sector:

- Farm, Community & Landscape **sust. Interventions and incentives**
- **Innovations** to drive implementation & business

Traditional Authorities:

- Lead management plan dvlpmt & implementation
- Accept & commit to being accountable for illegalities in forest reserves
- Collaborate with FC



Enabling Environment

Government:

- Political will & Leadership
- Clear eco analysis
- Implementing policies (tenure, enforcement, protection)
- Standard Reporting (Cocobod)
- Traceability & Monitoring (FC)

Civil Society:

- Advocacy for policy reforms
- Support government as Drivers of Change
- Provide technical assistance to industry



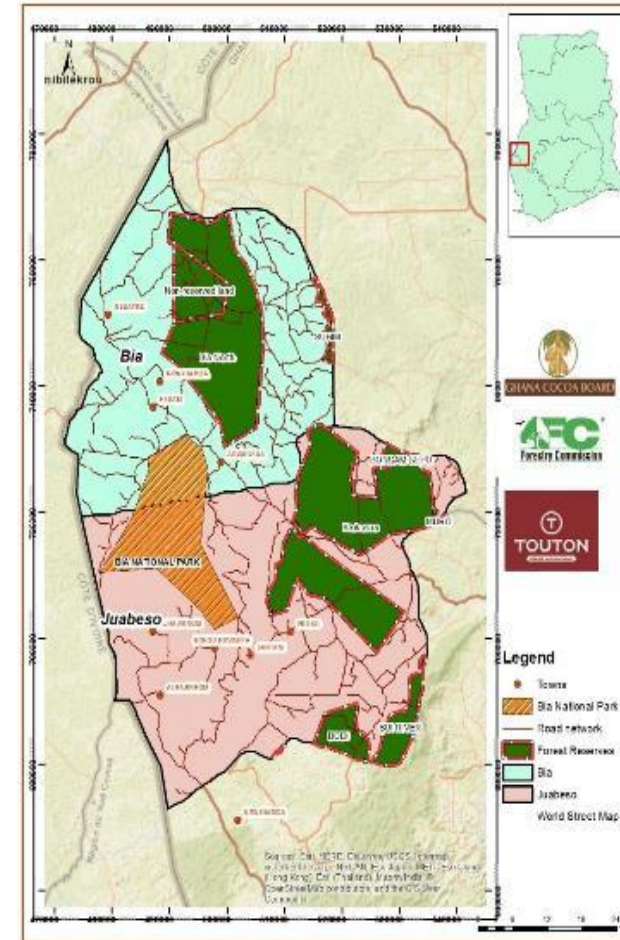
Our approach: the 3PRCL Partnership for productivity protection resilience in cocoa landscape (First HIA Pilot-GCFRP)

Key Outcomes:

- 50,000 farmers targeted by 2021
- Development and Implementation of a “Climate Smart Cocoa” national standard
- Reduced deforestation and forest protection
- Improved landscape management to support farming and rural livelihoods
- Carbon Benefit (2,308,896 tCO₂e yr⁻¹ for USD 11,544,479 @ \$5/tonne)

Project Area:

- An area of 243,561 ha out of which 149,400 ha is forest
- Produces an average of 60,000 MT of cocoa annually,
- Population: 130,000 inhabitants.



3PR-CL

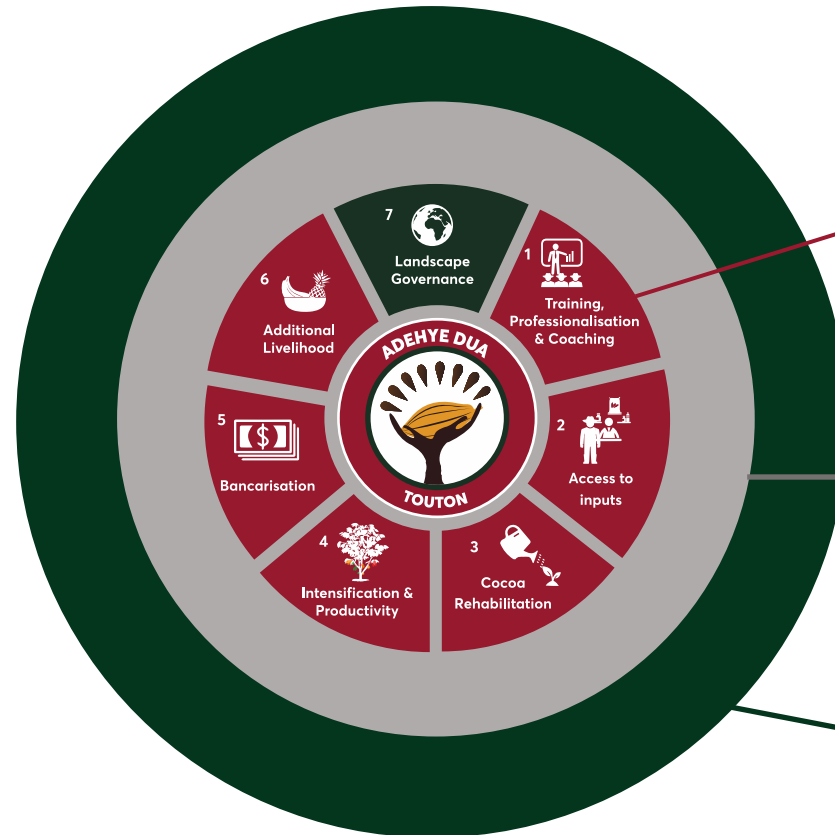
Using our Rural Service Centres (RSC) as hubs for delivery of services to farmers



Implementation

The interventions are implemented at three (3) levels:

1. Improved productivity and livelihoods at farm & community level
2. Improved governance at landscape level
3. Improved governance and inter-governmental coordination at the national level



**Climate Smart Cocoa Model
at Farm, Community and District Level**

Landscape/Jurisdictional Consortium

- Contribute to a multi stakeholder platform at Landscape Level
- Measure our sustainability outcome at Landscape scale by complying with the 'Landscape Metrics' components of the CSC Standard

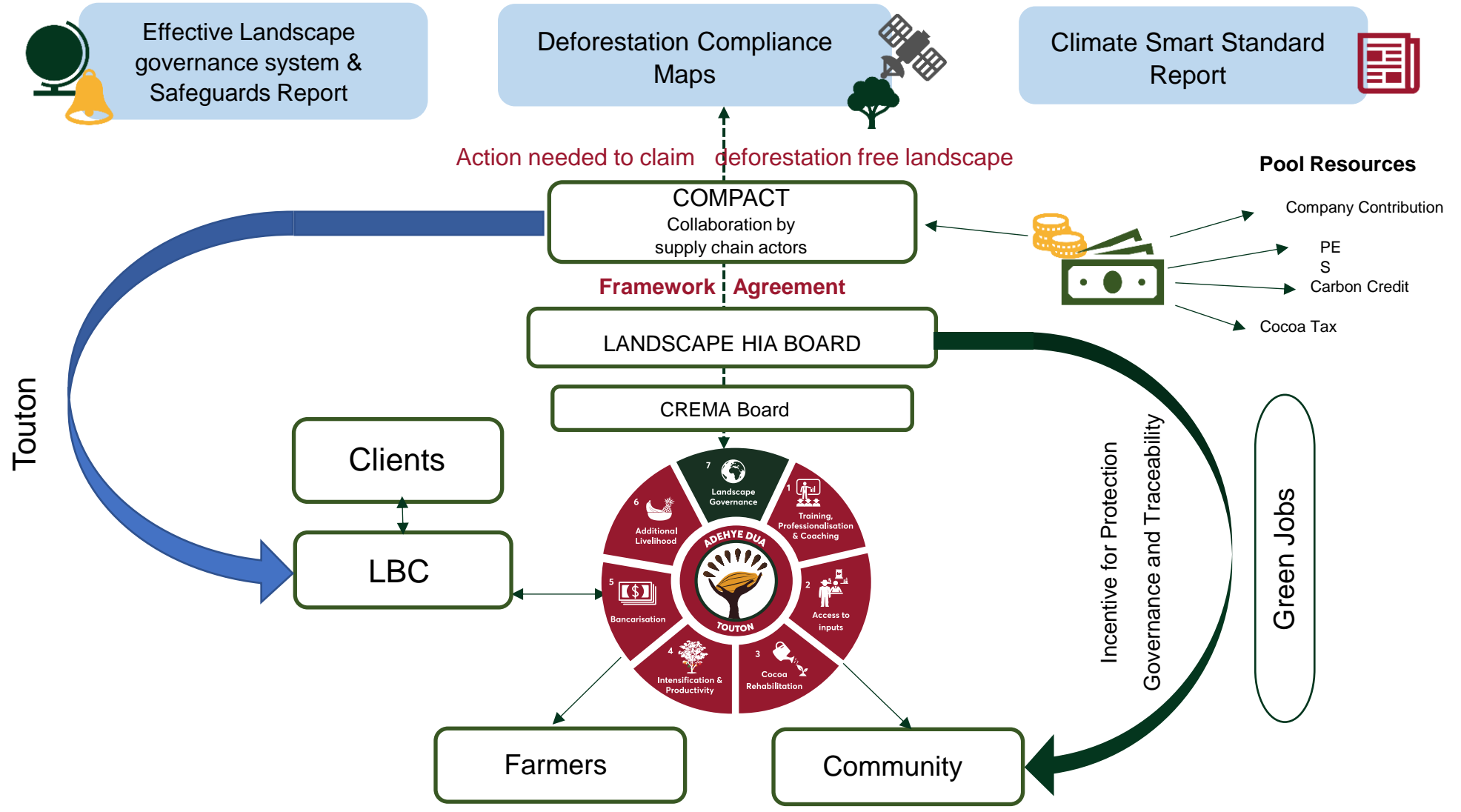
**Contribute to National Platform and
Emission Reduction/REDD+
Programme of Ghana**

Marketing CSC and Supply Chain Financing



CFI Commitments

REDD+ Commitment, HIA, Touton, FC, GoG



Building farm and community resilience through:

- Income diversification (RSC Franchise Holders)
- Community Development Projects



Key Achievements so far



Landscape Governance

- ❖ Vision and pathway for the HIA governance developed, introduced and launched
- ❖ Sociocultural study to inform the proposed governance structures
- ❖ HIA governance structure and HIA/sub-HIA constitutions developed
- ❖ 30 major stakeholders working/planning to work in the landscape identified and mapped.
- ❖ Traditional Authority has sanctioned commitment and collaboration for forest protection and elimination of tenure bottle necks
- ❖ Forest Caretaker movement launched

Cocoa Traceability & Deforestation Monitoring

- ❖ 11,300 farms mapped in and around the Krokosua and Bia forest reserves
- ❖ Platform secured to host mapped farm data and provide access to district level COCOBOD and Forestry Commission staff
- ❖ Forestry Commission developed national forest monitoring framework
- ❖ Key stakeholders identified, partnerships established to acquire logistics for supply shed level forest monitoring



Long term sustainability of efforts

- **Governance:** clear distribution of roles & strengthened alignment of efforts by different stakeholders
- **Finance:** concerted effort to identify innovative solutions for long term financing of efforts (blended finance? Supply-chain investments, PES, carbon credits?)
- **Monitoring & Evaluation:** how do we work together to ensure different levels of M&E are combined to provide a holistic picture to inform future activity?



Thank You

