

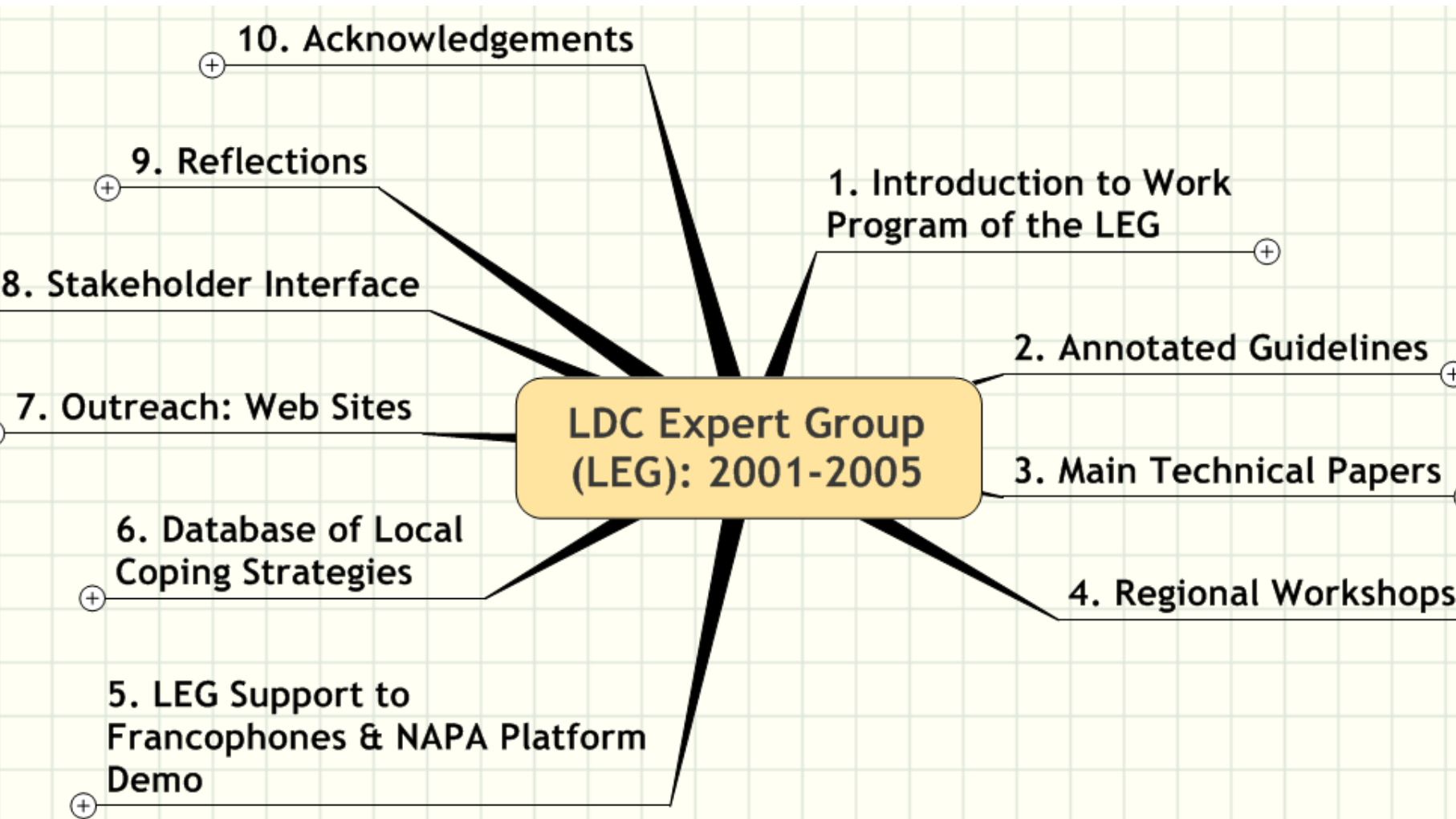
The UNFCCC logo features the text "UNFCCC" in a bold, sans-serif font. To the right of the text is a large, stylized sun or globe with a gradient from yellow to orange. A wavy line, representing a horizon or a path, curves around the bottom of the sun/globe.

UNFCCC

LDC Expert Group (LEG): 2001-2005

Presented by LEG members

LDC Expert Group (LEG): 2001-2005



Panelists

- Janos Pastor, Coordinator, SD Programme
- Paul V. Desanker, Chair
- Bubu Jallow
- Dechen Tsering
- Madeleine Diouf-Sarr
- Laavasa Malua
- Annie Roncerel

1. Introduction to Work Program of the LEG

1. Introduction to Work Program of the LEG

What is the LEG?

Advice on preparation of NAPA

Implementation Strategy

Review of Draft NAPAs

Capacity Building for NAPA Preparation

2. Annotated Guidelines

2. Annotated Guidelines


NAPA Guidelines from COP 7

LEG annotations produced in English & French

Special needs of Lusophone countries - just produced a Portuguese version that we are launching today

Upcoming training on NAPA preparation for Lusophones in the planning

Directrizes anotadas para a preparação de programas de acção de adaptação nacional

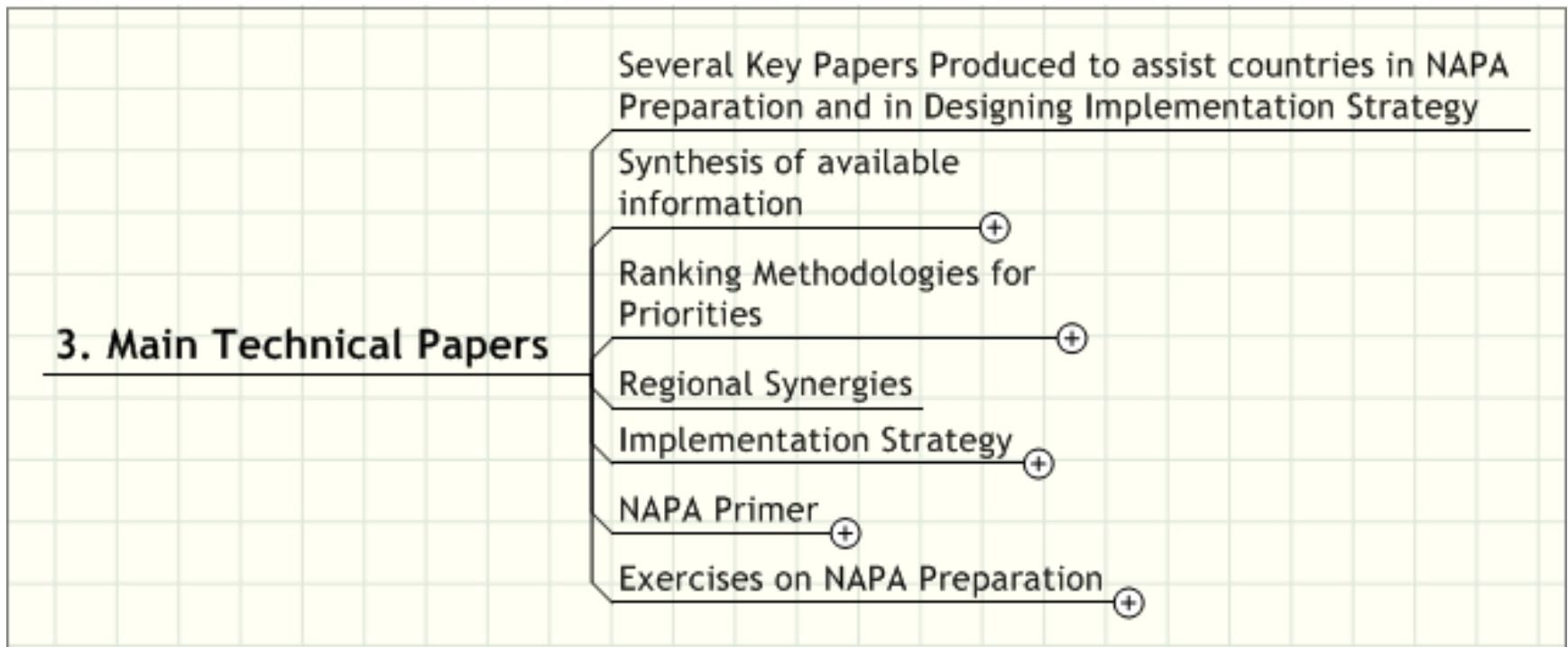


Grupo de Peritos para os Países
Menos Desenvolvidos

(Portuguese Version)

3. Main Technical Papers

- Dechen Tsering, Bhutan



Synthesis of available information Technical Paper

- Includes Resources including tools such as software
- In addition, there are Technical Sheets produced by UNITAR

Ranking Methodologies for Priorities

- Examples & training on typical MCA software
- Paper contained in Annotated Guidelines including a paper on Mainstreaming and Synergies with MEAs

Implementation Strategy

- Further guidelines on Ranking to identify urgency
- More details on presentation of Project Profiles in NAPAs
- Ideas about funding strategies to implement NAPA including inputs to LDCF consultations and ideas for countries to mobilize extra resources

NAPA Primer

- Comprehensive review of NAPA programme and process
- Available online at unfccc.int/ldc

Exercises on NAPA Preparation

- Gives examples and exercises used in LEG regional NAPA preparation workshops
- Based on regional training workshops
- Available in English and French

4. Regional Workshops

- Laavasa Malua, Former member and Chair of the LEG

4. Regional Workshops

COP Guidance on NAPA in December 2001

Global Launch Workshop in Dhaka, Sept 2002

Pacific Islands - Samoa, March, 2003

Africa Anglophone - Ethiopia, June, 2003

Asia - Bhutan, Sept, 2003

Africa Francophone - Burkina Faso, Oct, 2003

5. LEG Support to Francophone & NAPA Platform Demo

- Madeleine Diouf-Sarr, Senegal

Regional dialogue & Conferences
NAPA Platform to Support NAPA Teams

5. LEG Support to
Francophones & NAPA Platform
Demo

Regional Dialogue and Conferences

- Francophone Africa
- Collaboration with Regional Centers

NAPA Platform

Annie Roncerel, UNITAR

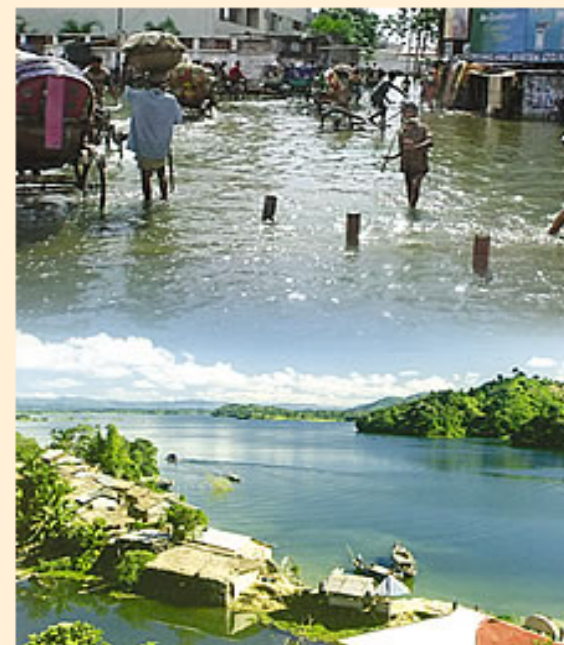
The NAPA Support Process

Introduction

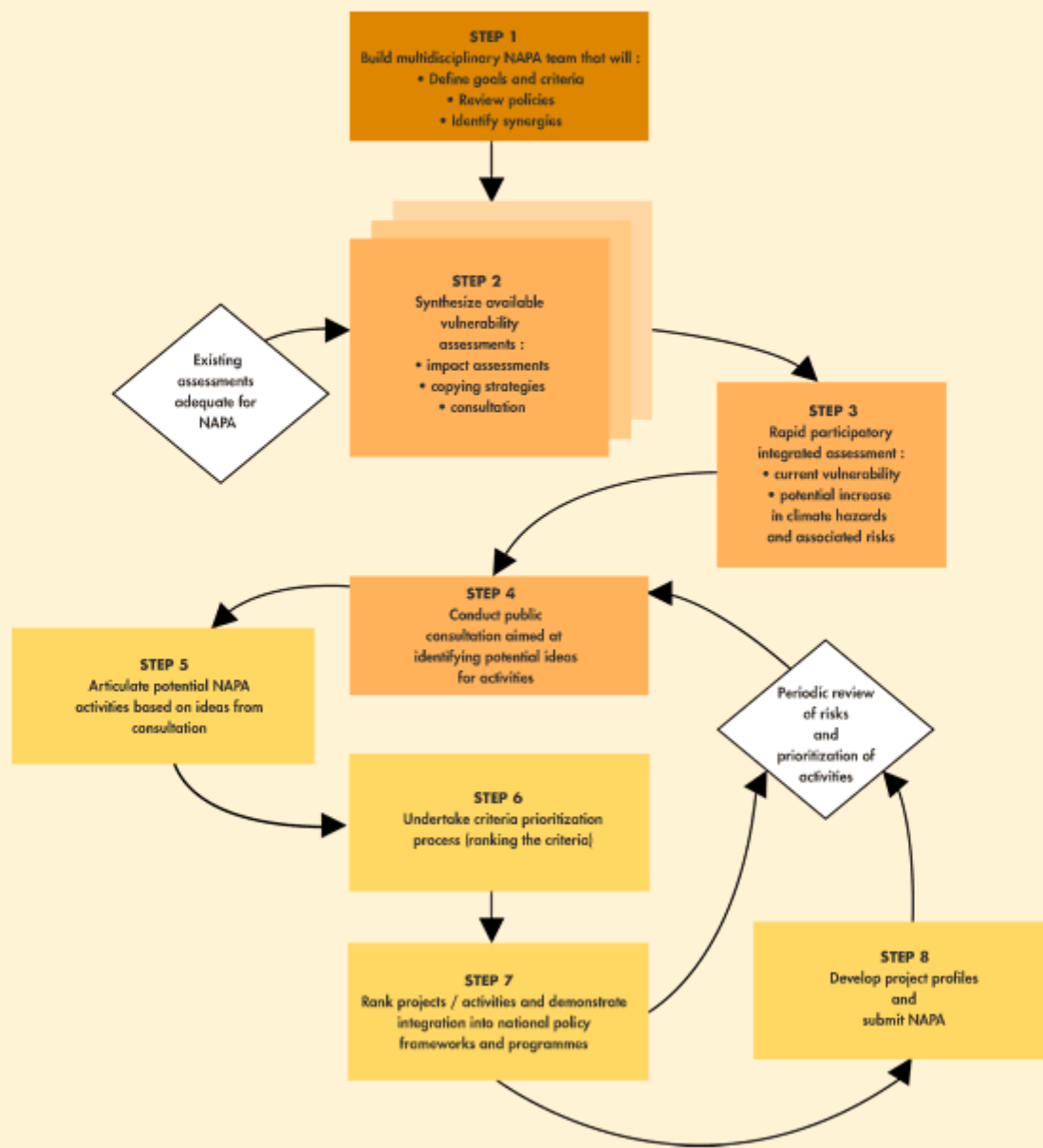
The 7th Conference of Parties (COP7) established guidelines to produce National Adaptation Programme of Action (NAPAs), while recognizing the unique situation of the Least Developed Countries (LDCs) (c.f. Guidelines for the preparation of national adaptation programmes of action, Dec 28/CP.7). (<http://unfccc.int/resource/docs/cop7/13a04.pdf>). The rationale resides in LDCs' limited adaptive capacities, and in the urgent need for specific support that will allow them to deal with the adverse effects of climate changes. The NAPAs will allow LDCs to set priority activities to be undertaken to meet their immediate needs and answer their urgent concerns with regards to adaptation to the negative effects of climate change.

At the 8th Conference of Parties (COP8), it was decided that four workshops for LDCs should be held (two in Africa for francophone and anglophone least developed countries, one in Asia, and one in a small island developing State) in order to "... advance the process for preparing national adaptation programmes of action in these regions...", under the guidance of the Least Developed Countries Expert Group (LEG) (c.f. Guidance to an entity entrusted with the operation of the financial mechanism of the Convention, for the operation of the Least Developed Country Fund, Dec 8/CP.8). (<http://unfccc.int/resource/docs/cop8/07a01.pdf>).

To help countries implement their NAPAs systematically and effectively, the LEG has defined various stages to be followed in this process. This approach was adopted during the four NAPA workshops held in 2003 as requested by the Parties. It is important to note that the NAPA process should be country-driven and country-



The NAPA process schema



The NAPA Support Process

The NAPA platform

The NAPA status

Version française

LOGIN



The NAPA platform

Welcome to the NAPA support platform. This online resource was created to help improve communication and information flow between key participants supporting the NAPA process.

The users:

- **NAPA Country Team Managers** to ask questions to experts, save files, record your progress, communicate with agencies, experts and other country teams.
- **The UNFCCC Secretariat and LEG** to monitor the process and offer technical and expert advice.
- **GEF Implementing Agencies** (in a closed working space) to monitor and communicate with country team managers and respond to questions.
- **Regional Experts** responding to questions and offering advice to NAPA country teams.

Using the NAPA platform

The platform is organized into two sections:

- Open website pages open to everyone (www.cern.ch/napa). Here, *LDC, UNFCCC process and guidance material* are available. For example, by clicking on the each of the eight steps of *The NAPA Process*, any visitor can see the proposed guidance prepared to help make the tasks easier to perform. Regular updates will be published on "*NAPA status*".
- A protected level where *resources and communication tools* are available after "logging in" to the platform. Click on the "LOGIN" button and enter the user name and password emailed to you.

LOGIN

Click on "Remember my password" and you will avoid having to type this information every time you log in. This gives you access to two levels of communication:

- **Shared working spaces** (used by all users) such as access to LEG information, UNFCCC resources, and useful Internet links, send messages/queries (message board) to experts and share files.
- **Secure working spaces** for the GEF Implementing Agencies' (shared by you and your implementing agency), available by clicking on the links with your country's name (marked with **private**).

What you will need

To use the services available on the platform, users must have the following equipment and software:

Espace LEG

Documents

Espace appui commun

Pour commencer
 Calendrier général
 Outils et information utile
 Expertise/consultants
 Documents (public)
 Forum messages (public)

Espace PNUE

Comores
 Djibouti
 Haiti
 Mauritanie
 République Centrafricaine
 Rwanda
 Sénégal

Espace PNUD

Bénin
 Bhutan
 Burkina Faso
 Burundi
 Cap Vert
 Congo
 Guinée
 Guinée Bissau
 Mali
 Niger
 Sierra-Leone
 Tchad
 Togo
 Tuvalu

Espace Banque Mondiale

Madagascar
 Sao Tome

Espace UNFCCC PMA

Page Web PMA

Countries Shared Folders

Size, MB

Last Modified

Forum messages - non lu/total

GENERAL

15.19

11/23/2005

Benin

0.04

10/31/2005

Bhutan

0

8/5/2005

Burkina Faso

0.04

10/31/2005

Burundi

0.4

10/31/2005

Cap Vert

0

8/5/2005

Comores

0.96

10/31/2005

Congo

0.67

11/11/2005

Djibouti

0

8/5/2005

Guinee

0.09

11/10/2005

Guinee Bissau

0.08

10/31/2005

Haiti

0

8/5/2005

Madagascar

0

8/5/2005

Mali

1.66

11/10/2005

Mauritanie

0.56

10/31/2005

Niger

13.99

11/14/2005

Republique Centra

République Centrafricaine
 Documents (public)
 Documents (private)
 Forum messages (public)
 Forum messages (private)

Rwanda

0

8/5/2005

Sao Tome

3.45

10/31/2005

Senegal

0

10/31/2005

Sierra Leone

0

9/13/2005

Tchad

0.02

11/10/2005

Togo

0

8/5/2005

Tuvalu

0

9/13/2005

Espace LEG

Documents

Espace appui commun

Pour commencer

Calendrier général

Outils et information utile

Expertise/consultants

Documents (public)

Forum messages (public)

Espace PNUE

+ Comores

+ Djibouti

+ Haïti

+ Mauritanie

+ République Centrafricain

+ Rwanda

+ Sénégal

Espace PNUD

+ Bénin

+ Bhutan

+ Burkina Faso

+ Burundi

+ Cap Vert

+ Congo

+ Guinée

+ Guinée Bissau

+ Mali

+ Niger

+ Sierra-Leone

+ Tchad

+ Togo

+ Tuvalu

Espace Banque Mondiale

+ Madagascar

+ Sao Tome

Espace UNFCCC PMA

Page Web PMA

PANA | Outils et information utiles

Sommaire des catégories ...

Afficher

Nouveau lien

Nouvelle catégorie

[Climate Change Graphics](#)1 lien(s) [\[cliquez ici pour mettre à jour\]](#)[Climate Change Institutions](#)7 lien(s) [\[cliquez ici pour mettre à jour\]](#)[Climate Data and Modeling](#)6 lien(s) [\[cliquez ici pour mettre à jour\]](#)[Coastal Zones & Small Island Developing States](#)1 lien(s) [\[cliquez ici pour mettre à jour\]](#)[Disaster Reduction](#)3 lien(s) [\[cliquez ici pour mettre à jour\]](#)[Food Security](#)8 lien(s) [\[cliquez ici pour mettre à jour\]](#)[General Tools for NAPA Support](#)6 lien(s) [\[cliquez ici pour mettre à jour\]](#)[Health](#)3 lien(s) [\[cliquez ici pour mettre à jour\]](#)[Livelihoods](#)2 lien(s) [\[cliquez ici pour mettre à jour\]](#)[Mainstreaming Adaptation](#)2 lien(s) [\[cliquez ici pour mettre à jour\]](#)[Poverty Reduction](#)2 lien(s) [\[cliquez ici pour mettre à jour\]](#)[Regional Climate Change Impacts](#)2 lien(s) [\[cliquez ici pour mettre à jour\]](#)[Satellite Imagery and GIS Services](#)1 lien(s) [\[cliquez ici pour mettre à jour\]](#)[Vulnerability Networks and Online Libraries](#)8 lien(s) [\[cliquez ici pour mettre à jour\]](#)

Useful tools & information

- Climate change graphics (1 link)
- Climate change institutions (7 links)
- General tools for NAPA support (6 links)
- Regional climate change impacts (2 links)
- Climate data and modelling (5 links)
- Poverty reduction (2 links)
- Disaster reduction (3 links)
- Livelihoods (2 links)
- Food security (8 links)
- Health (1 link)
- Satellite imagery and GIS services (1 link)
- Climate change graphics (1 link)
- Mainstreaming adaptation (2 links)
- Vulnerability and adaptation networks and libraries (7 links)

FileEditViewFavoritesToolsHelp

Back

Search

Favorites

Address bar: https://webh02.cern.ch/pana-napa/tools/

Resources

WebmailParametersFoldersUsersEmail to AllMessagingVideoconferencingRemote Office

Passwor

RESSOURCES

Espace LEG

Documents

???

Espace appui commun

Calendrier général

Liens utiles

Documents (public)

Forum messages (publi

Espace PNUE

+ Comores

+ Djibouti

+ Haïti

+ Mauritanie

+ République Centrafricair

+ Rwanda

+ Sénégal

Espace PNUD

+ Bénin

+ Bhutan

+ Burkina Faso

+ Burundi

+ Cap Vert

+ Congo

+ Guinée

+ Guinée Bissau

+ Mali

+ Niger

+ Tchad

+ Togo

Espace Banque Mondiale

NAPA Calendar

Nouveau

X

Aujourd'hui

1

7

31

Aide

Se déconnecte

août 2005

lun.	mar.	mer.	jeu.	ven.	sam.	dim.
25 juil.	26	27	28	29	30	31
1 août	2	3	4	5	6	7
8	9	10	11	12	13	14
15	16	17	18	19	20	21
	meeting (Kiribati)	meeting (Kiribati)	LEG meeting (Kirit	LEG meeting (Kirit	LEG meeting (Kirit	LEG meeting (Kirit
22	23	24	25	26	27	28
29	30	31	1 sept.	2	3	4

août 2005

l	m	m	j	v	s	d
25	26	27	28	29	30	31
1	2	3	4	5	6	7
8	9	10	11	12	13	14
15	16	17	18	19	20	21
22	23	24	25	26	27	28
29	30	31	1	2	3	4

Collaborative platform

Internet

NAPA

NATIONAL ADAPTATION PROGRAMME OF ACTION

The NAPA Support Process

The NAPA platform

The NAPA status

Version française

NAPA status

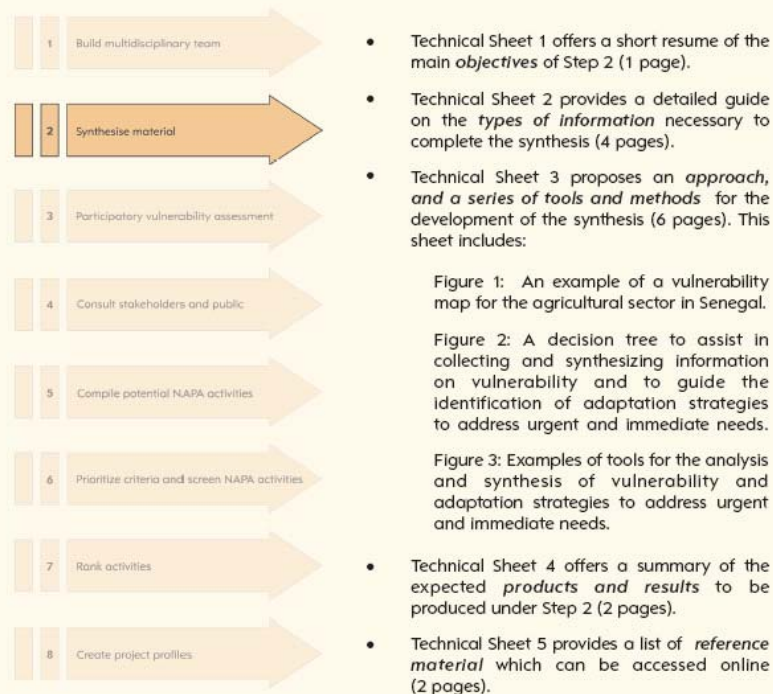
- [Benin](#)

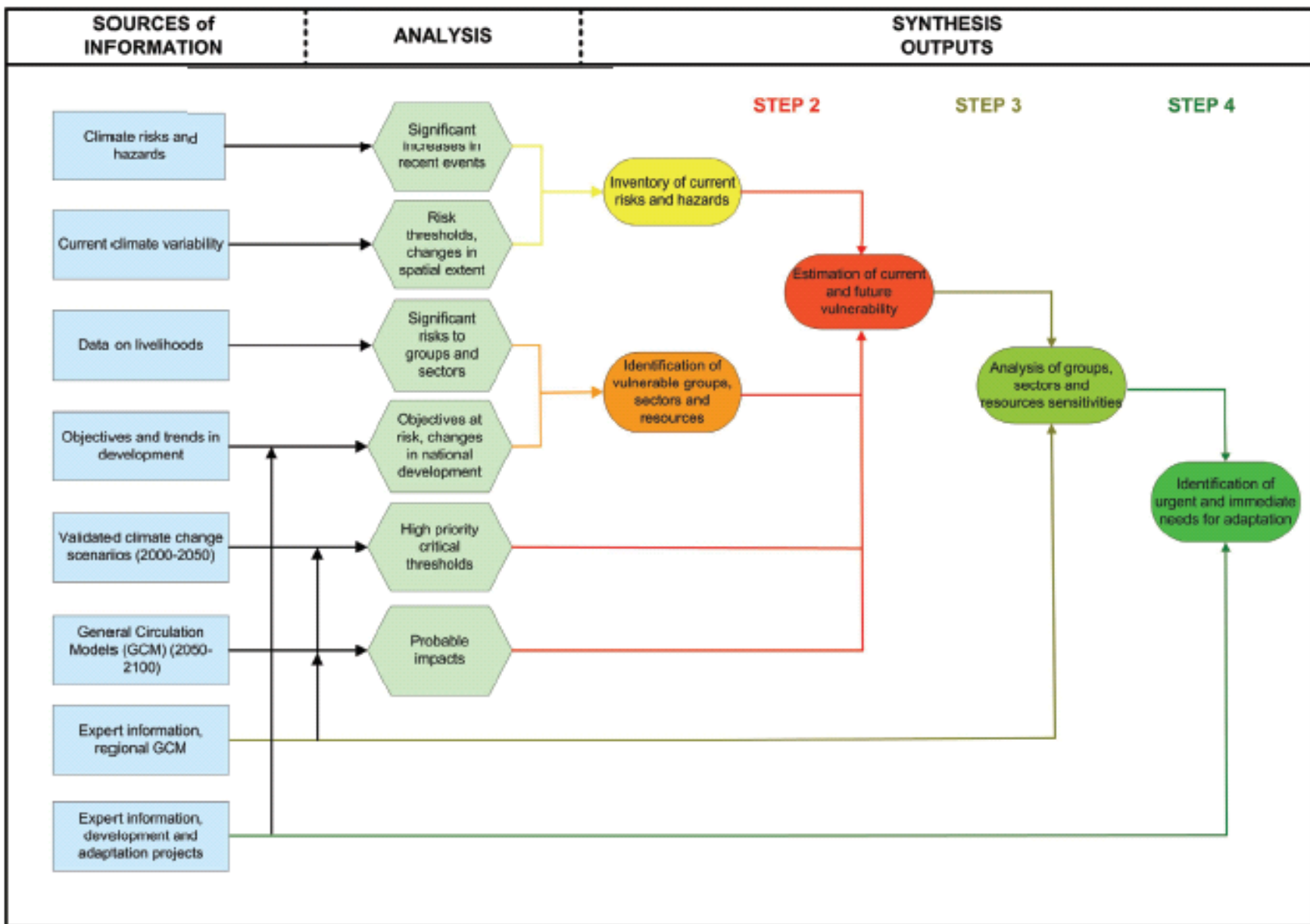


VULNERABILITY IN THE NAPA PROCESS

TECHNICAL SHEETS TO SUPPORT THE STEP 2 PROCESS

The main objective of Step 2 of the NAPA process is to synthesize relevant information on the current and future climate hazards, impacts and risks to which social groups, economic sectors and natural resources are exposed. This step immediately follows the creation of a multidisciplinary team (Step 1). The following five technical sheets address the objectives, as well as the methods and resources necessary to complete Step 2.





6. Database of Local Coping Strategies

- Paul V. Desanker, Malawi

<http://maindb.unfccc.int/public/adaptation/>

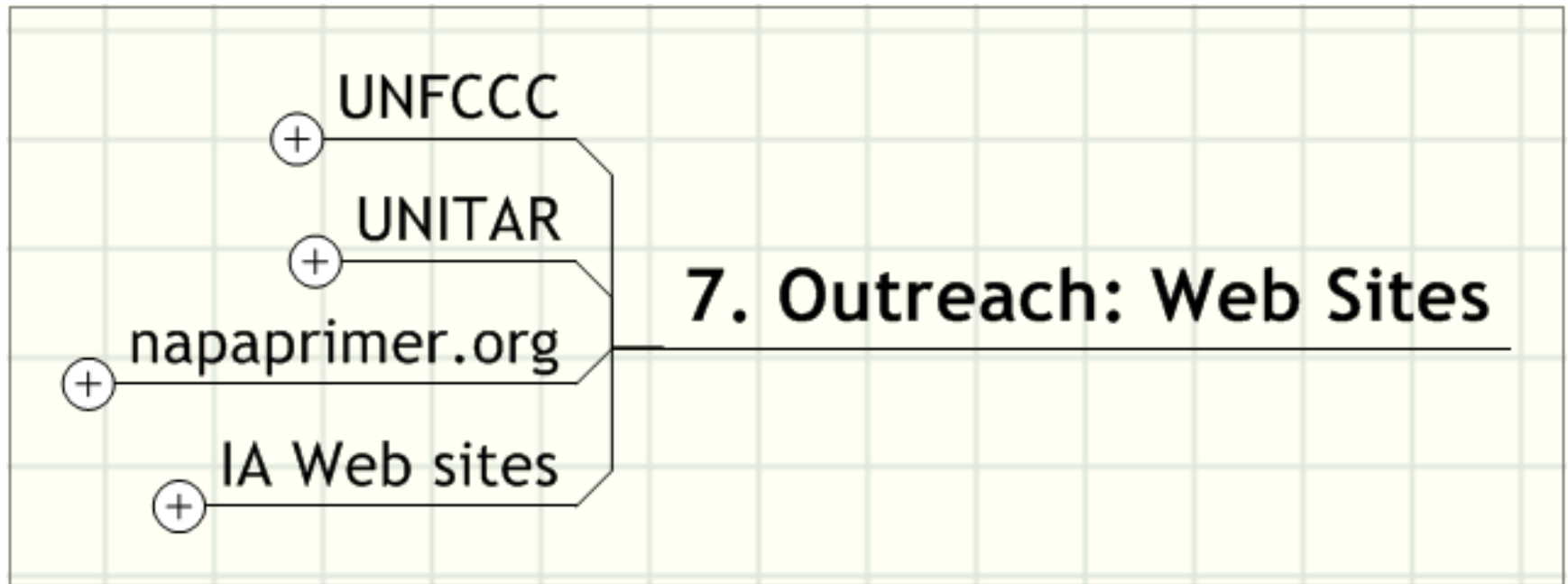
Design process

Launch - www.unfccc.int/ldc

**6. Database of Local
Coping Strategies**

7. Outreach: Web Sites

- Bubu Jallow, The Gambia, again



UNFCCC

www.unfccc.int/ldc

email support through:
<leghelp@unfccc.int>

Least Developed Countries - Microsoft Internet Explorer provided by Your ICT technical team!!

File Edit View Favorites Tools Help

Address http://unfccc.int/cooperation_and_support/ldc/items/2666.php

Google Search

Home CDM GHG CC:Net TT:Clear

SITEMAP | FAQ | TEXT VERSION | CONTACT US | DISCLAIMER | ESPAÑOL | FRANÇAIS

Your location: Home > Cooperation & Support > Least Developed Countries

Least Developed Countries

Français This page provides links to information contained in other parts of the UNFCCC website as well as to relevant information available on selected external websites.

General information on LDCs

- [LDC Country Information](#)
- [List of Least Developed Countries](#) (63 kB)

[UNFCCC Article 4 \(extracts\)](#) (5 kB)

UNFCCC official documents related to LDCs

COP 11 Decisions

- [Draft decision on further guidance for the operation of the LDC Fund](#)

COP 10 Decisions

- [Work of the Least Developed Countries Expert Group](#)
- [Draft conclusions on assessing the status of implementation of Article 4, paragraph 9, of the Convention](#)

COP 9 Decisions

- [Assessing the status of the Implementation of Article 4, paragraph 9, of the Convention](#)
- [Further guidance for the operation of the LDC Fund](#)
- [Extension of the mandate of the LEG](#)
- [Review of the guidelines for the preparation of NAPAs](#)

COP 8 Decisions

- [Guidance for the operation of the LDC Fund](#) (87 kB)
- [Review of the guidelines for the preparation of national adaptation programmes of action](#) (9 kB)

COP 7 Decisions

- [Implementation of Article 4, paragraphs 8 and 9, of the Convention](#) (25 kB)
- [Guidance for the operation of the LDC Fund](#) (6 kB) (6 kB)
- [Guidelines for the preparation of national adaptation programmes of action](#) (19 kB)
- [Establishment of a least developed countries expert group](#) (10 kB)

SBI conclusions on LDCs

- [Draft conclusions proposed by the Chair at SBI 22](#)
- [Report of the LEG at SBI 20](#)

Search:

Essential Background

Documentation

Meetings

Cooperation & Support

- Least Developed Countries**
- Education & Outreach
- Funding
- Technology
- Capacity Building
- Cooperation with International Organisations

Adaptation

Technology

National Reports

Methods & Science

Kyoto Mechanisms

Parties & Observers

Press

Secretariat

Issues Quickfinder:

Please choose

Start

Least De...

Oxford Su...

M:\FCCC ...

LEG Side E...

UNITAR-I...

UNFCCC sl...

MZC Symp...

TYN presen...

Internet

UNITAR

- Archives of LEG regional workshop materials
 - All presentations and links to extra information
 - www.unitar.org/ccp
- NAPA Platform- central access to many materials
 - See previous links

NAPA Primer

- NAPA Primer summarizes the NAPA evolution and describes PRIVA - the participatory rapid assessment for vulnerability and adaptation
- NAPA Primer available for download
 - PDF available at www.napaprimer.org
 - Also through www.unfccc.int/ldc

Implementing Agency Web sites

- UNEP:
www.unep.org/themes/climatechange;
email support
- World Bank: climate change page
www.worldbank.org
- UNDP:
<http://gef.undp.org/extras/cdac/pk/index.htm>

Programming Climate Change Adaptation

This programming kit is for preparing adaptation proposals for submission to UNDP-GEF. It offers the latest information on the GEF adaptation funds, and explains how these funds can be accessed.

Accessing GEF Adaptation Funds

Short-Term Measures

Long-Term Measures

Focal Areas/ Ecosystems

- Biodiversity
- Land Degradation
- International Waters
- Climate Change

Strategic Priority on Adaptation (SPA)

Human Systems

- Agriculture/Food
- Water Resources
- Health
- Disaster Risk

Least Developed Country Fund (LDCF)

Special Climate Change Fund (SCCF)

8. Stakeholder Interface

LEG meetings in LDCs with interaction
with NAPA Teams

High-level sessions with Country Leaders

Visits to local projects & communities

8. Stakeholder Interface

LEG Meetings in LDCs

- Arusha, Tanzania
- Apia, Samoa
- Thimphu, Bhutan
- Maputo, Mozambique
- Banjul, The Gambia
- Tarawa, Kiribati

High-level meetings with Country Leaders

- Bangladesh: Prime Minister
- Samoa: Prime Minister
- Ethiopia: President
- Bhutan:
- Kiribati: President and Vice-President

Visits with NAPA Teams and Local Projects

- Updates of NAPA preparation
- LEG answered questions
- Visit to climate change projects

9. Reflections

- Paul V. Desanker, Malawi, again

LEG Composition

Meetings in LDCs: broad experience
of LDC situation

Access to this enabling activity needed substantial
support - indication of needed help to come

Feedback from countries on issues with IA: choice, access,
etc: dialogue useful to overcome these

Experience in outgoing LEG members and NAPA teams that
completed NAPAs useful resource for IAs & LDCs as they
continue to prepare

Length to reach a NAPA has been a major concern

9. Reflections

10. Acknowledgements

Many experts for their valuable inputs

Past LEG members

Secretariat

Donors for support for specific activities of the LEG work program

10. Acknowledgements

LDC Expert Group (LEG): 2001-2005

