

Increasing the resilience of communities to cope with impacts of Climate Change Nepal

Presentation Agenda

Project area

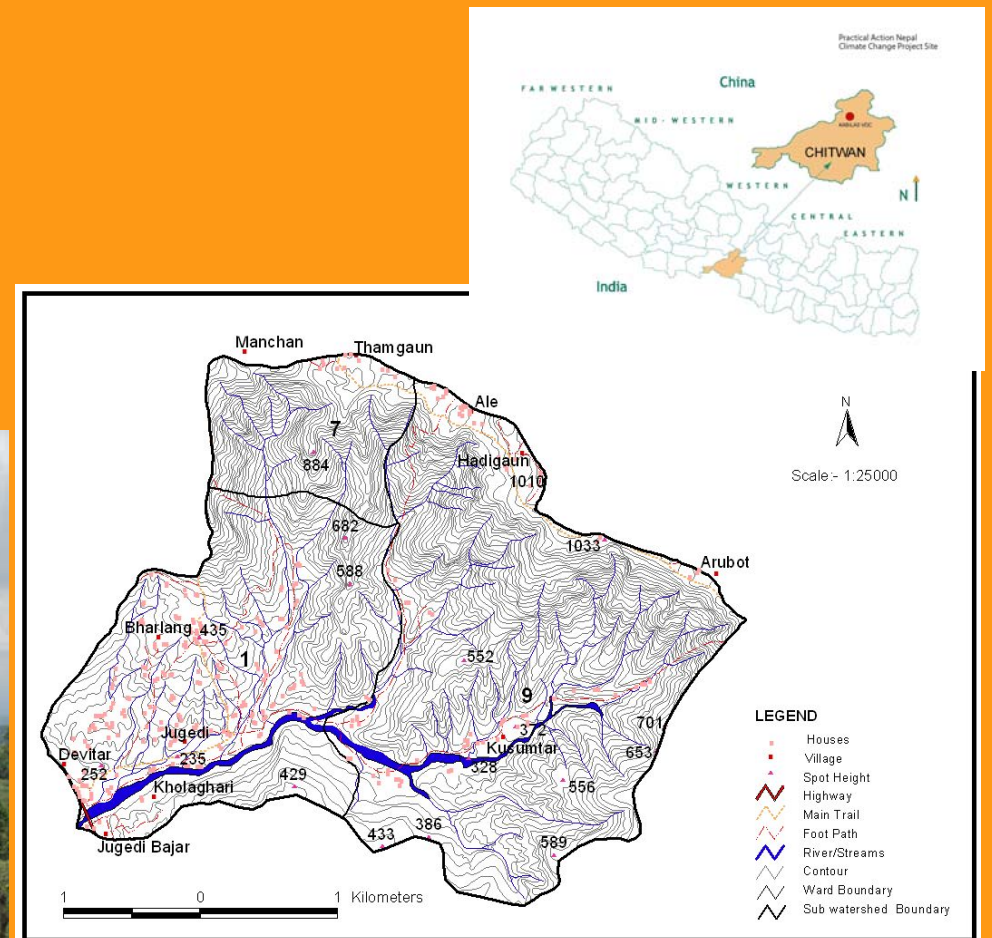
Climate change impacts

Activities

Lessons

Working area

- Jugedi stream watershed, Chitwan in lower Himalayan foothills
- 10 scattered settlements, ~200 households ~1200 population
- Subsistence agriculture and livestock raising
- Dependent on natural resources



Impacts, vulnerabilities and local knowledge

- Erratic rainfall (unpredictable and out of season)
- Extreme weather events like hail storms
- Increasing disasters like flash floods
- Prolonged drought, longer haze
- Decrease in available surface water
- Reduced food production



Impacts ...



Activities ...

Awareness raising and strengthening of coping capacity of communities

- Trainings
- Sharing meetings and interaction workshops
- Exposure visits
- Demo/trial plots
- Posters, booklets
- Weather station
- Awareness rallies/contests



Activities ...

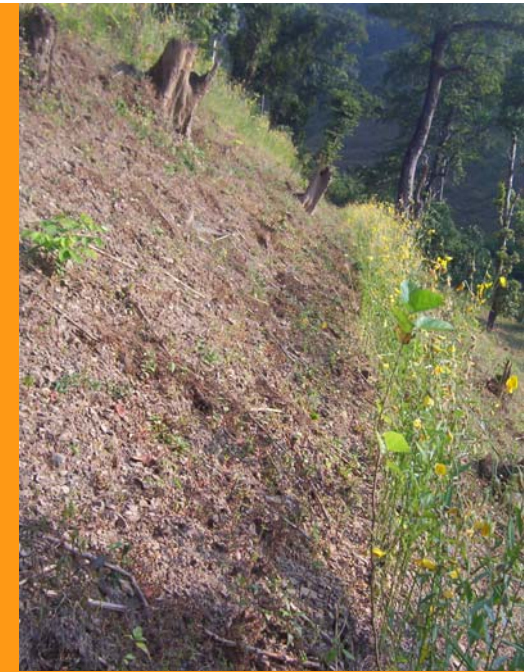
Diversification on choices and options for agriculture and income generation to maintain the livelihoods/reduce pressure on Natural Resources

- Choice in crop species/varieties and land use
- Environment friendly agriculture and pest management
- Improvement of livestock and land use



Activities ...

Land use improvement



Livestock Improvement



Activities ...

Appropriate approaches on natural resources management and water conservation/utilization to strengthen the capacity of landscape system

- Management of scarce water resources - improvement on irrigation systems



Activities ...

- Improvement of watershed health
 - Dykes and check dams
 - Community forestry
 - Bio-engineering
 - land use improvement



Activities

- Establishment of community organization
- Institutional strengthening and capacity enhancement
- Long-term strategies for coping – Plan
- Building partnership, linkages and networks



Lessons learned

- Impacts of climate change and their associated effects extend throughout watershed, and are combined with the results of human activities on resource management.
- Implementation of adaptation process should integrate with social inclusion, poverty reduction, and development priorities
- Integrated watershed management approach is one viable modality to the community based adaptation