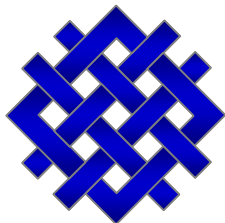


Comments on: OECD Environmental Outlook, World's Cities Exposure

OECD side event at SB28
June 10, 2008
Bonn, Germany



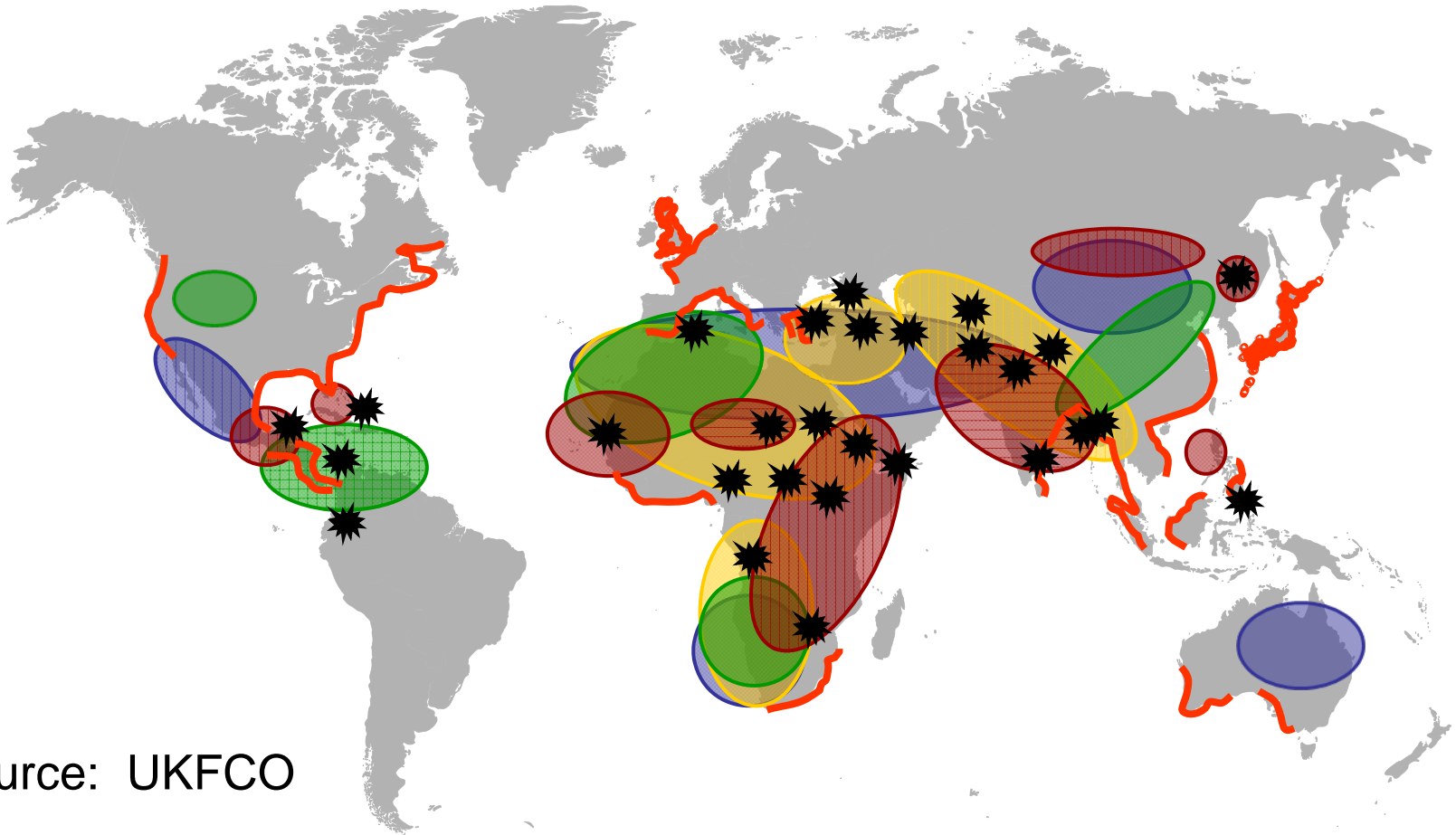
Jonathan Pershing

World Resources Institute

<http://www.wri.org>

jpershing@wri.org

A Multiplier for Instability



Source: UKFCO



Water Scarcity



Demography



Crop Decline



Hunger

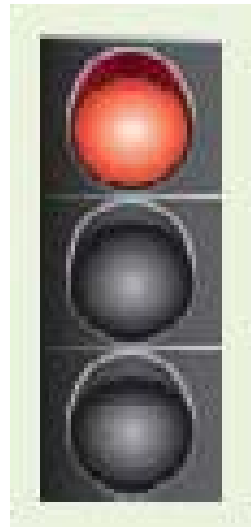


Coastal Risks



Recent Conflicts

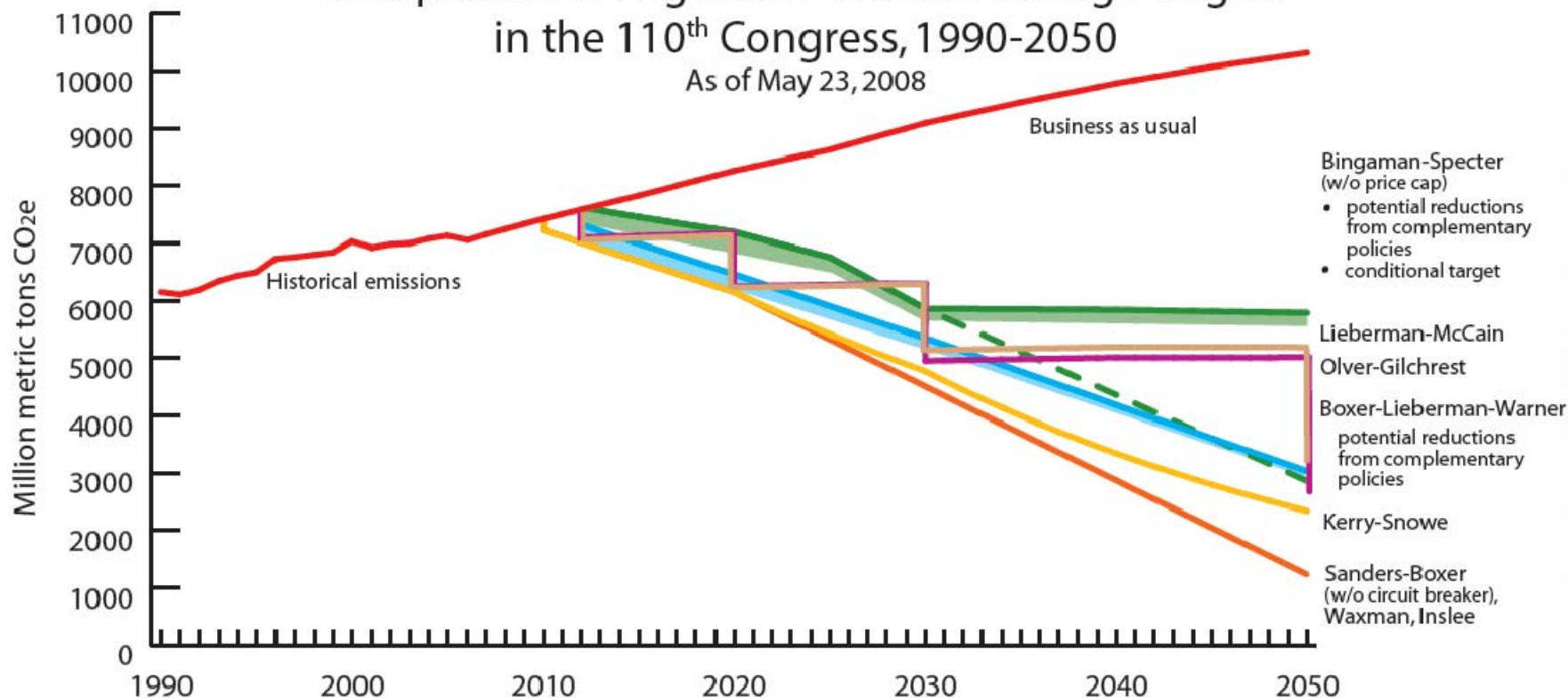
Is the problem properly characterized?



It is a RED light –
and the intersections of impacts make it dark red..

Comparison of Legislative Climate Change Targets in the 110th Congress, 1990-2050

As of May 23, 2008



WORLD RESOURCES INSTITUTE

4

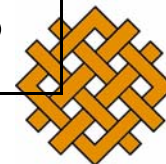
For a full discussion of underlying methodology, assumptions and references, please see <http://www.wri.org/usclimatetargets>. WRI does not endorse any of these bills. This analysis is intended to fairly and accurately compare explicit carbon caps in Congressional climate proposals and uses underlying data that may differ from other analyses. Price caps and circuit breakers contained in some bills may allow emissions to exceed what is depicted in this analysis.



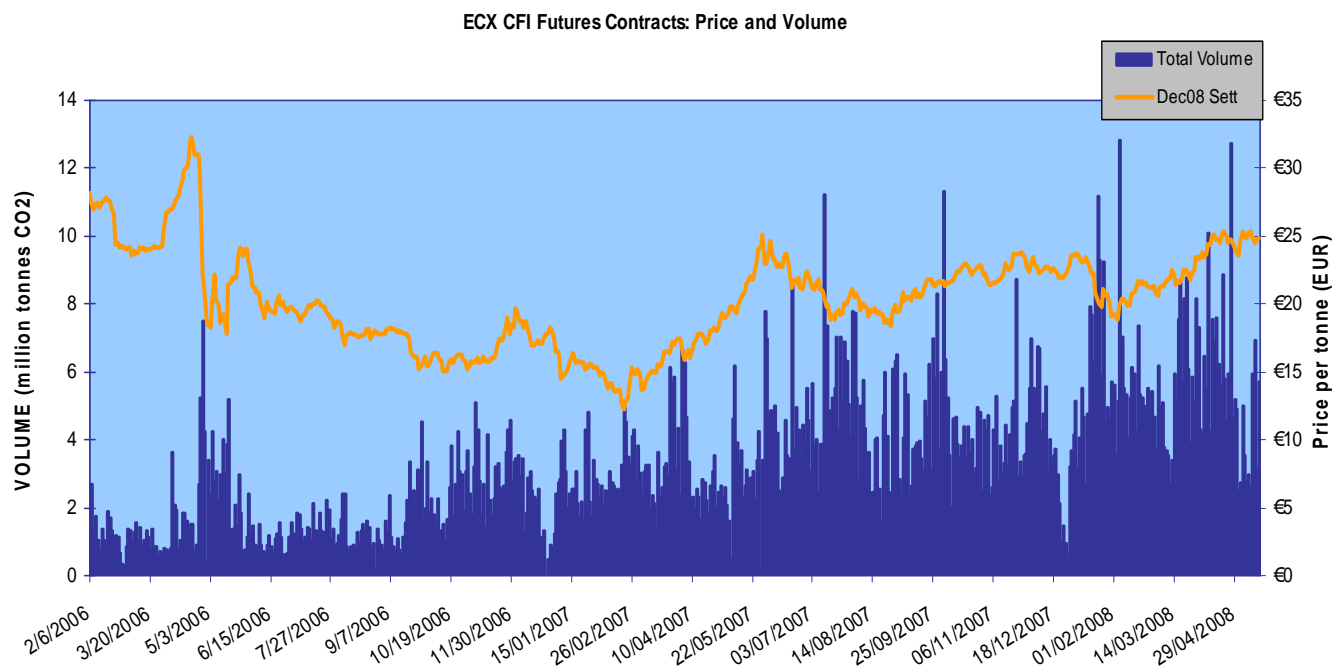
W R I

Modeled Prices for S-2191

	Allowance price, \$ / tonne		Impact on GDP, change from reference case	
	2020	2050	2020	2050
EPA (Model run 2)	44	190	-1.62 %	-4.64 %
EIA	30	NA	-0.3 %	NA
Massachusetts Institute of Technology	58.24	188.90	-0.78 %	-0.75 %
Nicholas Institute	25.50	111.10	-0.82 %	-1.6 4%



European Emissions Trading Contract Prices



Dec '08	€ 25.31
Dec '09	€ 25.91
Dec '10	€ 26.61
Dec '11	€ 27.33
Dec '12	€ 28.33
Dec '13	€ 29.28
Dec '14	€ 30.63

Projected Price (Commission Projection; 20 and 30%): €39, €30)

Source: http://www.europeanclimateexchange.com/default_flash.asp; European Commission, 2008



Chinese Action

- Energy Efficiency : 20% reduction energy per unit GDP by 2010
- Renewable Energy: 10% of TPES by 2010
- Industry: stabilize N_2O , increase use of CBM for CH_4 reduction
- Forestry : increase forest cover 20% above 2005 levels by 2010; sequester 50 million tons carbon
- Adaptation: forests, grassland, water use, coastal protection



Is it enough?

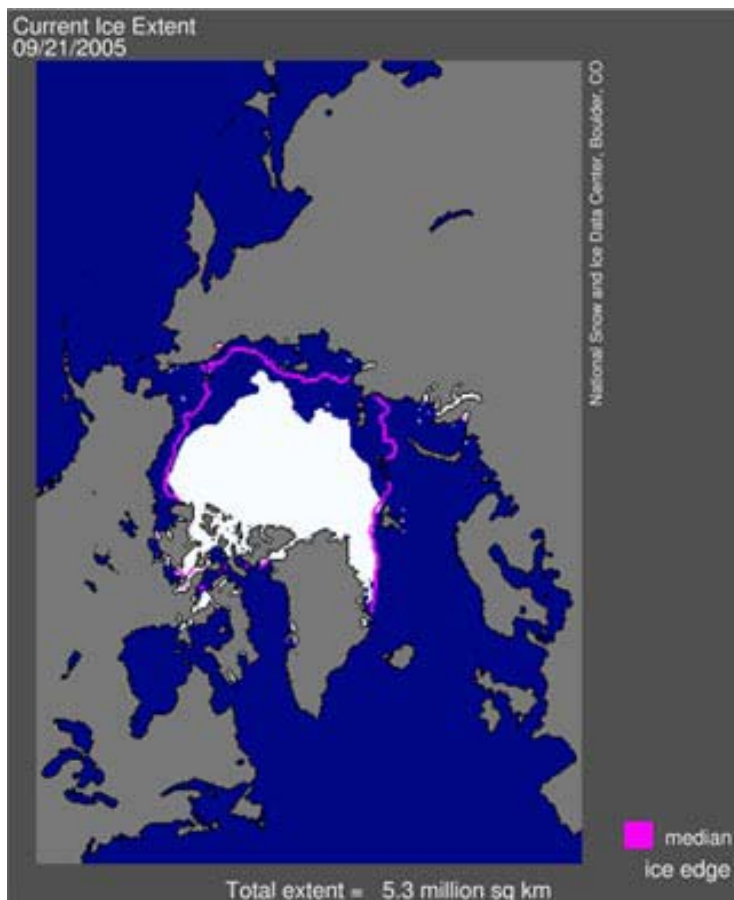


May not yet be a green light, even if costs manageable

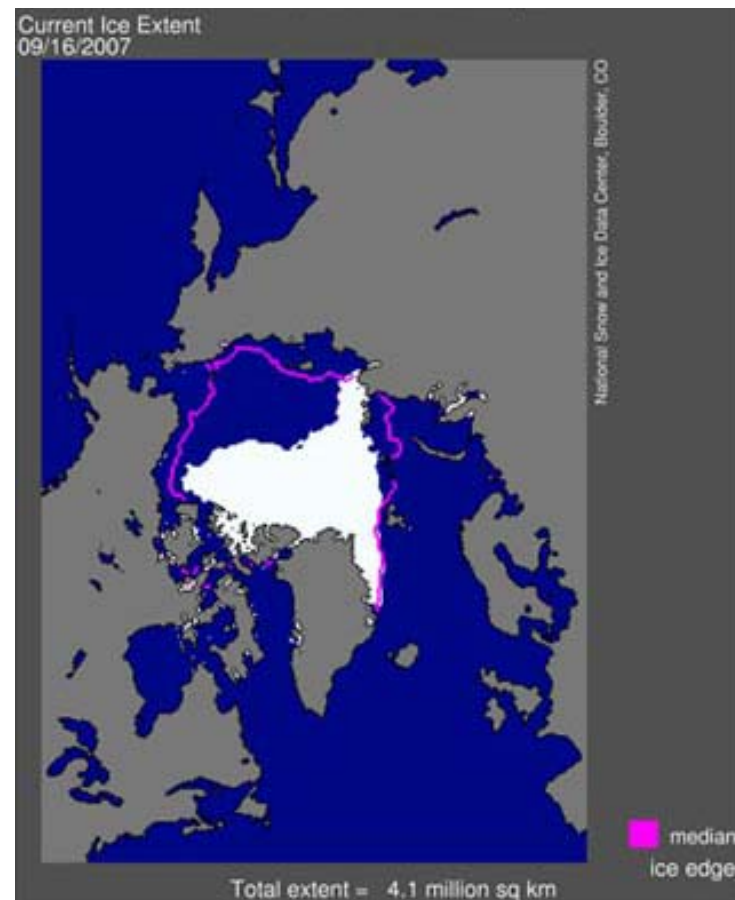
Cities Exposure to Coastal Flooding

Arctic Sea Ice Melt:

(460,000 square miles less than the previous minimum record, roughly the equivalent of the area of Texas and California combined)



2005 (previous minimum)

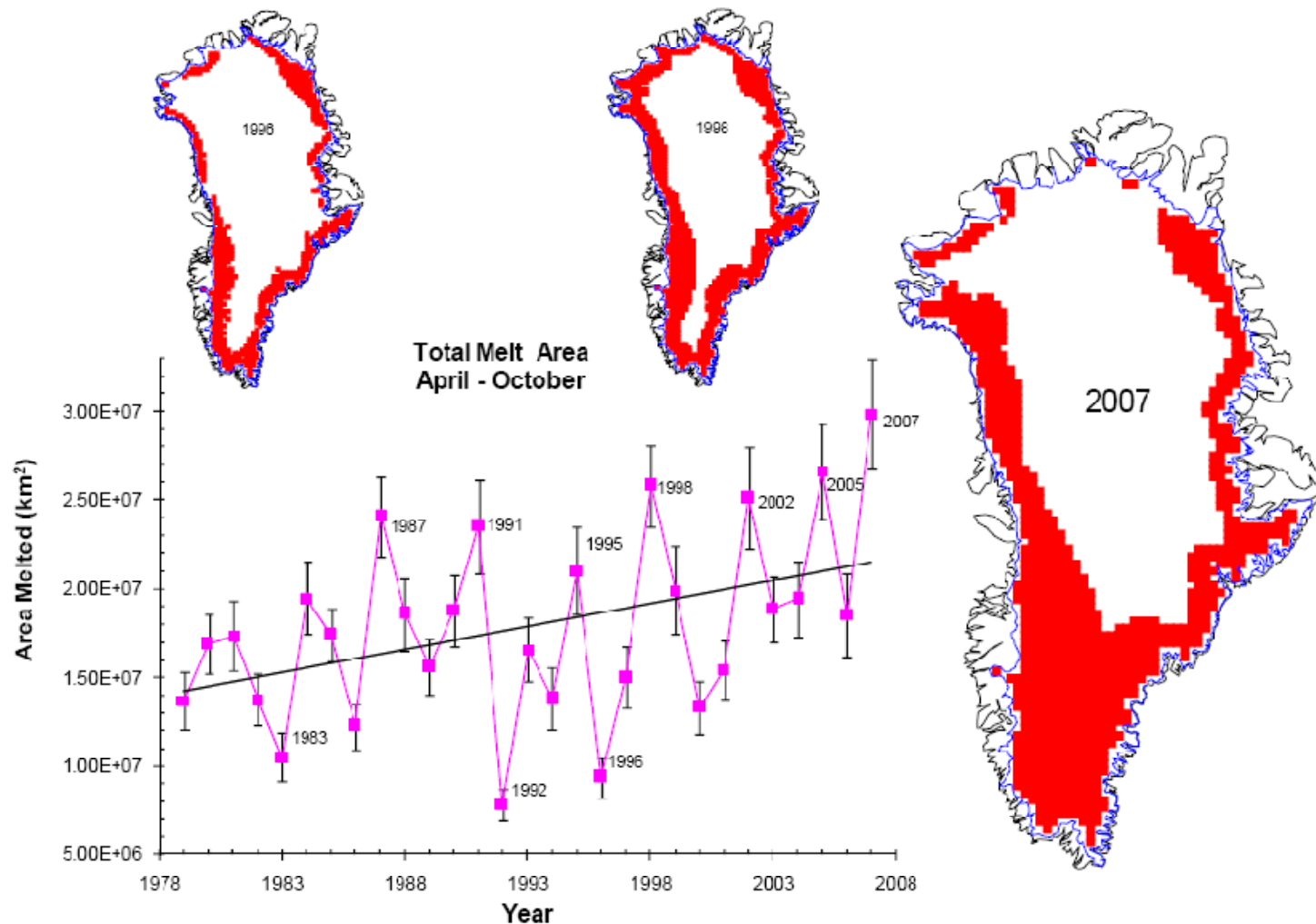


2007 (new minimum)

Source: National Snow and Ice Data Center, 2008



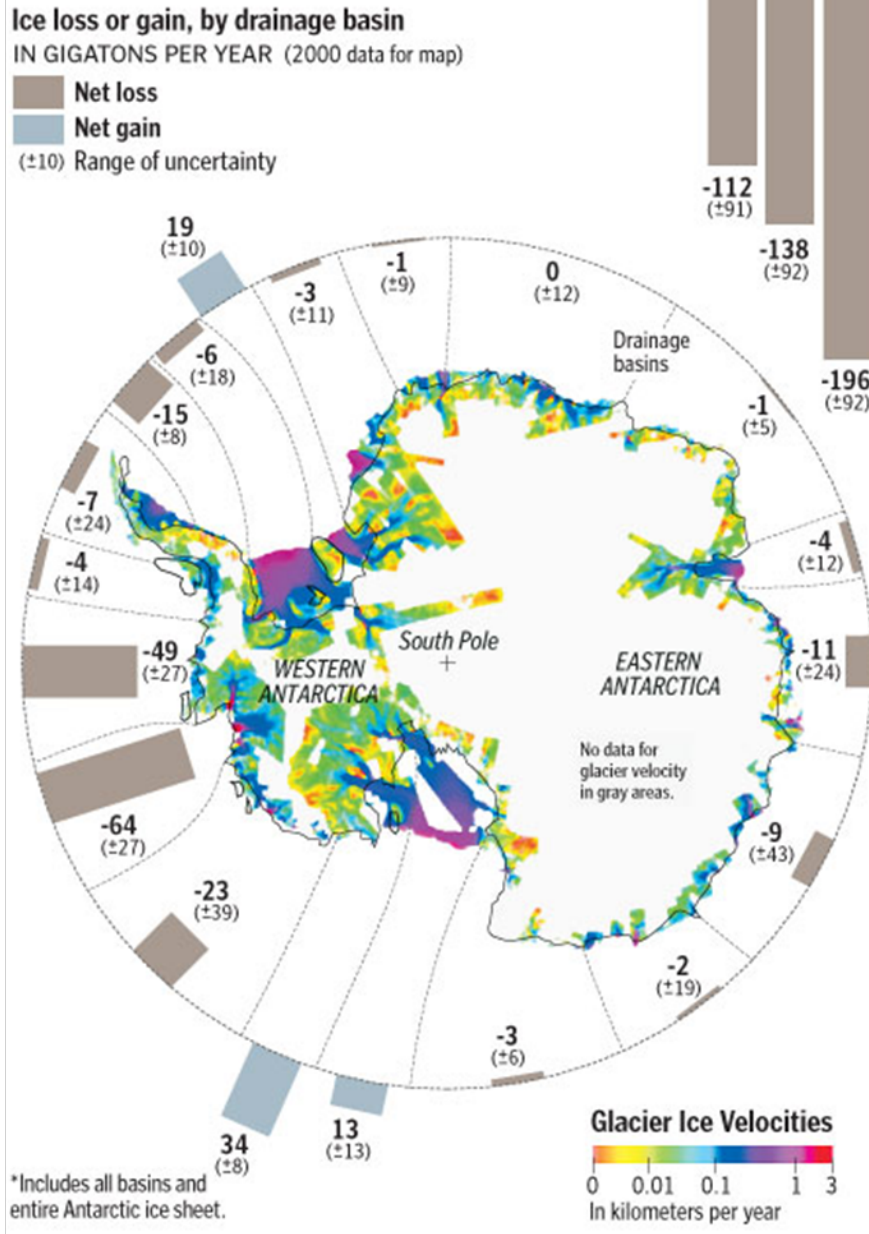
Greenland Ice: 1978 - 2007



Konrad Steffen and Russell Huff, CIRES, University of Colorado at Boulder



Melting of Antarctica



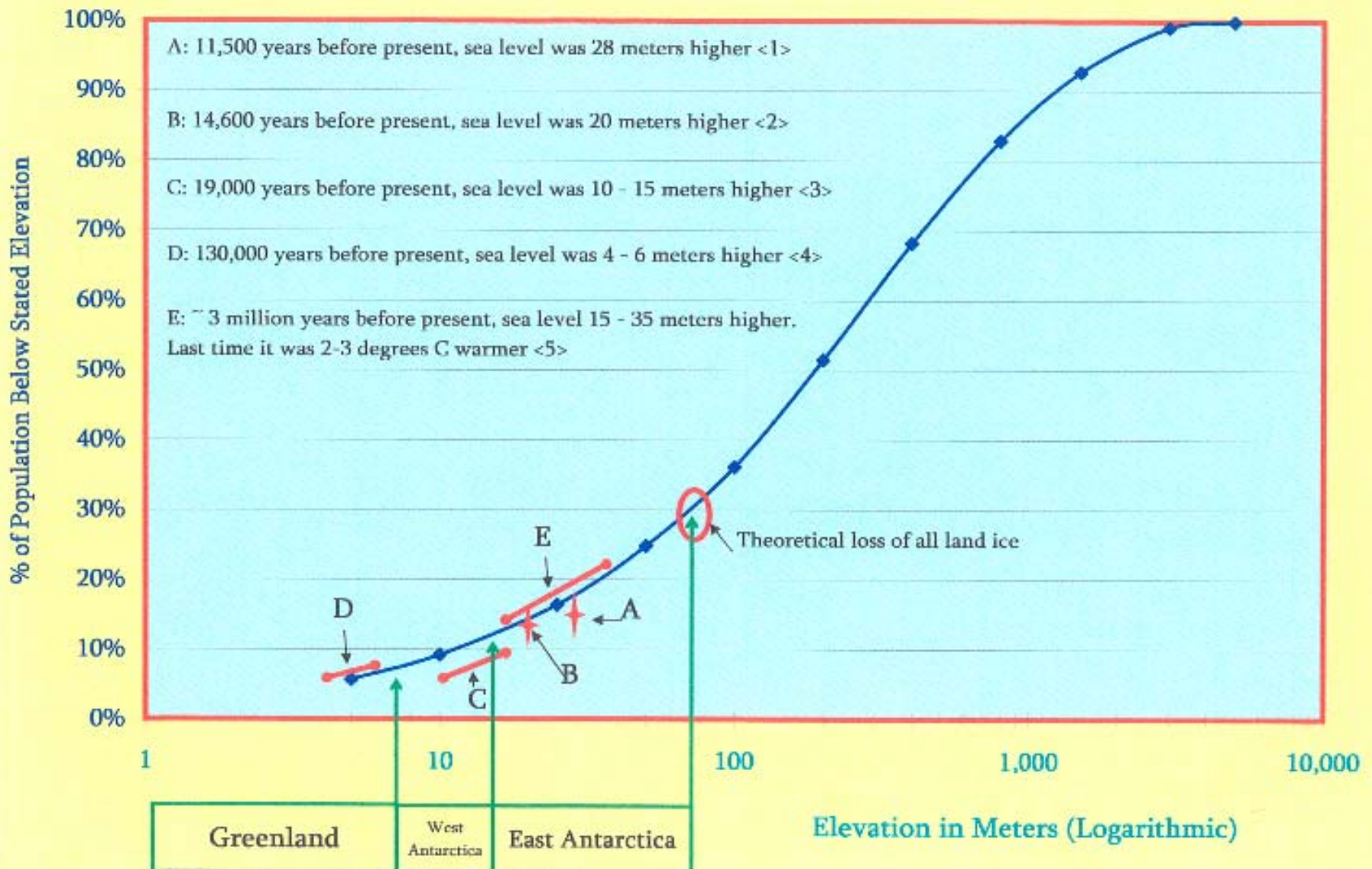
- Melting is related to ocean warming, not temperature increase in Antarctic interior
- Antarctic ice sheet loss is comparable to Greenland ice sheet loss
- Melting of West Antarctica would raise total sea level by 5-6 m

SOURCE: Nature; Eric Rignot
GRAPHIC: BY Patterson Clark, The Washington Post - January 14, 2008



Distribution of World Population by Elevation

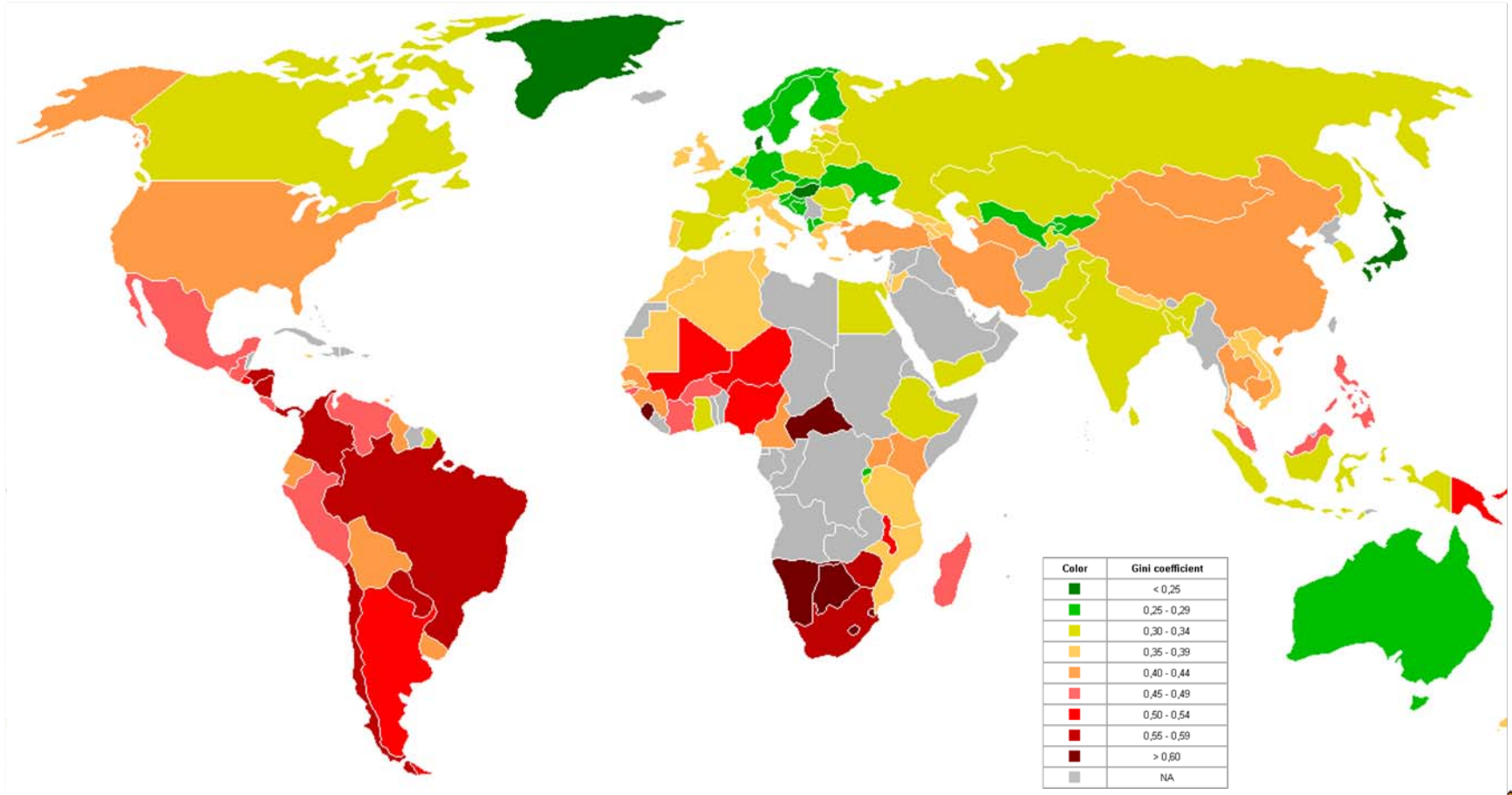
Showing Examples of Sea Level Rise in Recent Geological History



Elevation in Meters (Logarithmic)

Source: Mike Burnett, pers. comm.

Gini Index

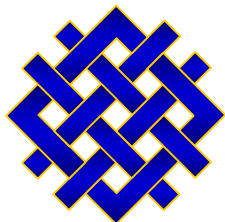


Source, UNDP, dates 1994-2003



New Orleans after Katrina





Jonathan Pershing (jpershing@wri.org)

World Resources Institute

<http://www.wri.org>