



Evaluating Climate Adaptation

Kenneth Chomitz

Senior Advisor, Independent Evaluation Group

Kchomitz [at] worldbank.org

www.worldbank.org/ieg/climatechange

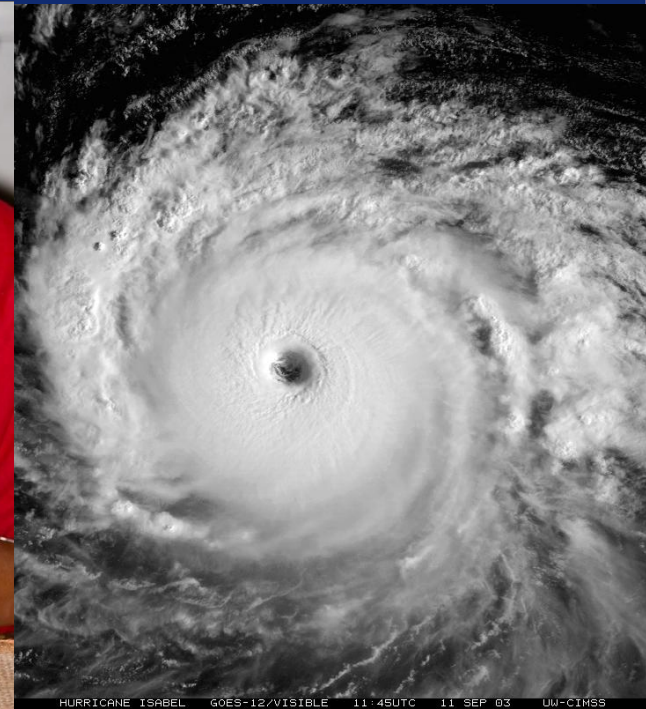
IEG's Climate Evaluation Series



Phase I:
Win-win Energy Policies
2009

Phase II:
Mitigation 2010

Phase III:
Adaptation
2012





Evaluation questions

What actions are

- *Relevant*
- *Effective*
- *Efficient*

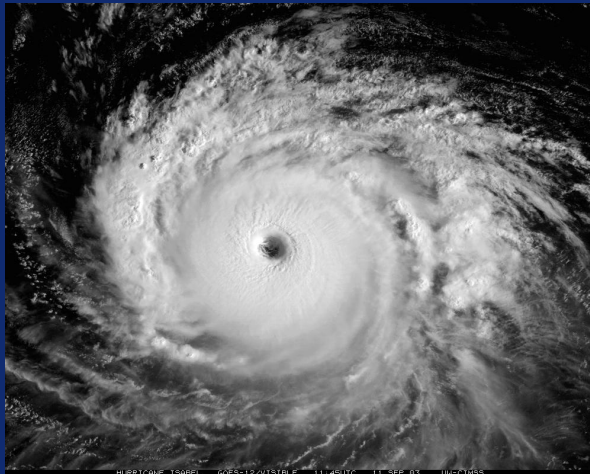
....in promoting adaptation

What is the relationship between adaptation and development – how does the need for adaptation change development practice?

Three kinds of adaptation needs



Chronic
climate-related
conditions



Extreme
events

Inexorable
calamities



Evaluating impacts on resilience



Chronic climate-related conditions	Use standard ex post impact assessment
Extreme events	Ex ante assessment
Inexorable calamities	Ex ante assessment



Interventions to be evaluated

- ▶ Adaptation analogs, e.g.
 - Flood prevention
 - Mangrove planting
 - Drought mitigation
 - Hydrometeorology systems
- ▶ Mainstreaming climate change into the design and appraisal of long-lived investments, e.g. hydropower and protected areas
- ▶ Explicit adaptation projects
 - Including climate and vulnerability assessments, capacity building, planning, and institutional development



Emerging issues and questions

- ▶ Is it meaningful to distinguish adaptation projects from (other) development projects?
- ▶ Can we come up with good measures of impacts on resilience or vulnerability?
- ▶ When is it essential to build long-term climate considerations into project or program design?
- ▶ Can downscaled climate models provide the information that decision-makers need?
- ▶ Are there any examples of effective land used planning?

Thank you!



Kchomitz [at] worldbank.org

