

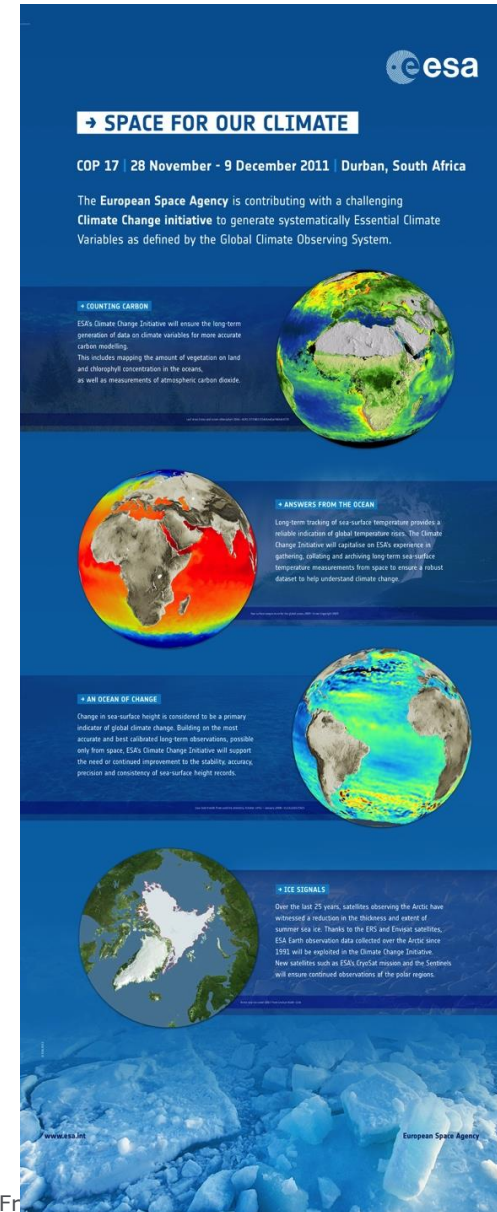
How Global and National Data Sets can support National Forest Monitoring Systems for REDD+

Room Arabian, Wednesday 9 November 2016 (13:15-14:45)



ESA and UNFCCC

- ESA began to work with UNFCCC as **Intergovernmental Observer Organisation** in 2001 and is present at UNFCCC Conference of Parties (COP) since 2002
- Dedicated projects provided demonstration services related to the **Kyoto Protocol**
- GSE Forest Monitoring supported since 2006 development and demonstration of “**Reduction of Emissions from Deforestation and degradation in Developing countries (REDD)**” with pilot cases
- ESA supports **GOFC-GOLD** Land Cover project office working on the **REDD+ Source Book**
- ESA supports the **Global Forests Observation Initiative GFOI** coordinating systematic observations from space
- ESA’s **Climate Change Initiative** generates currently **13 ECVs** in response to GCOS requirements and UNFCCC
- ESA coordinates the space component of the European flagship program **COPERNICUS** with the **Sentinel** satellites



Sent-1A/B



Sent-2A/B



Sent-3A/B



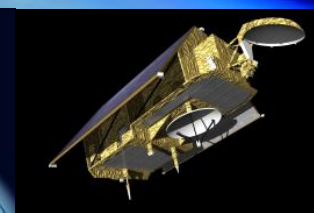
Sent-4A/B



Sent-5/5P



Sent-6/Jason-CS



- Copernicus is a European space flagship programme led by the European Union
- ESA coordinates the Space Component
- EC coordinates the Service and In situ Components
- Copernicus provides the necessary data for operational monitoring of the environment and for civil security
- Data policy: free and open access

➔ <https://scihub.copernicus.eu/>



S1: Radar Mission

A-LAUNCHED
3.04.2014

S2: High Resolution Optical Mission

A-LAUNCHED
23.06.2015

S3: Medium Resolution Imaging and Altimetry Mission

A-LAUNCHED
16.02.2016

S4: Geostationary Atmospheric Chemistry Mission

B-LAUNCH
Q2-2017

S5P: Low Earth Orbit Atmospheric Chemistry Precursor Mission

LAUNCH
Q2-2017

S5: Low Earth Orbit Atmospheric Chemistry Mission

B-LAUNCH
04.2017

S6 (Jason-CS): Altimetry Mission

In EU Pavilion - Room Bratislava, Thu 10 Nov at 16:30 - 18:00

In Memoriam of Jim Penman



Integration of remote-sensing and ground-based observations for estimation of emissions and removals of greenhouse gases in forests



Methods and Guidance from the Global Forest Observations Initiative

Edition 2.0

How Global and National Data Sets can support NFMS for REDD+

Room Arabian, Wednesday 9 November 2016 (13:15-14:45)

- ***Introduction*** - Frank Martin Seifert (European Space Agency)
- ***Keynote*** - Rene Castro (FAO's Assistant Direct General responsible for forestry)
- ***GFOI in support to countries*** - Evan Notman (USAID)
- ***Use of global data sets for national-level monitoring, reporting and implementation*** - Martin Herold (GOFC GOLD)
- ***National mapping in Gabon*** - Tanguy Gahouma (AGEOS - Gabon)
- ***Cameroon's effort in NFMS*** - Rene Siwe (REDD+ Technical Secretariat at the Ministry of Environment Cameroon)
- ***Panel discussion***