

Case Study

Loss and Damage to Small-scale Salt Producers in Bangladesh



**Mizanur Rahman Bijoy
&
Mohammad Mahbubur Rahman**

Background

- ❖ Over 5 million people are engaged in salt industry in Bangladesh.
- ❖ Contributes about 35.5 to 41.5 million USD each year in the national economy.
- ❖ Produced traditionally by small-scale farmers.
- ❖ Manually operated local equipment.
- ❖ Lease the land on a yearly basis.



Photo: Nazir Uddin Mahmud

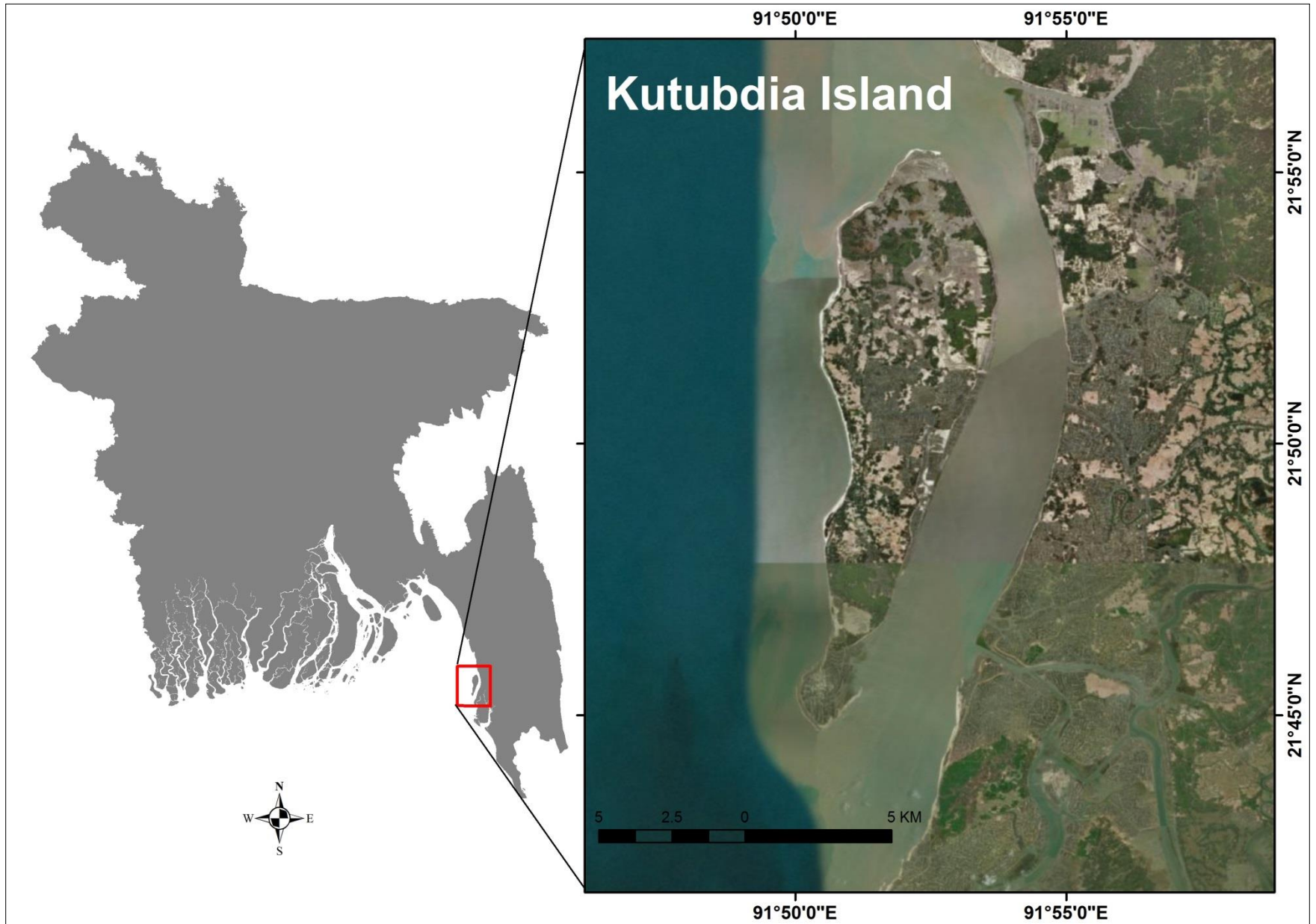
Background (Cont..)

- ❖ Small-scale salt farmers in Bangladesh have been experiencing unusual extreme weather, volatile price and ambiguity regulation.
- ❖ In recent years salt cultivation is seriously affected by extreme climatic events including erratic rainfall pattern.
- ❖ In 2017 at least 2,12,000 metric tons of salt damaged and in 2018 1,28,000 metric tons of salts because of unusual and excessive rainfall.



Photo: Md. Mahbubur Rahman

Study Area



Tools and Method

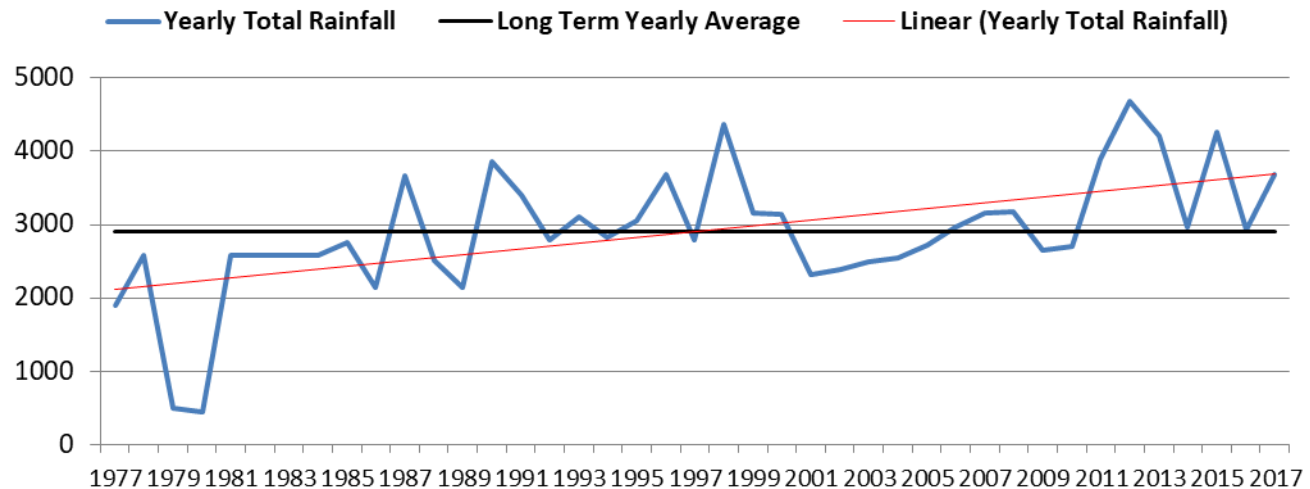
- ❖ Literature review
- ❖ 50 in-depth with small scale salt farmers
- ❖ 01 participatory vulnerability analysis (PVA)
- ❖ 05 key informant interview (KII)
- ❖ Secondary data analysis



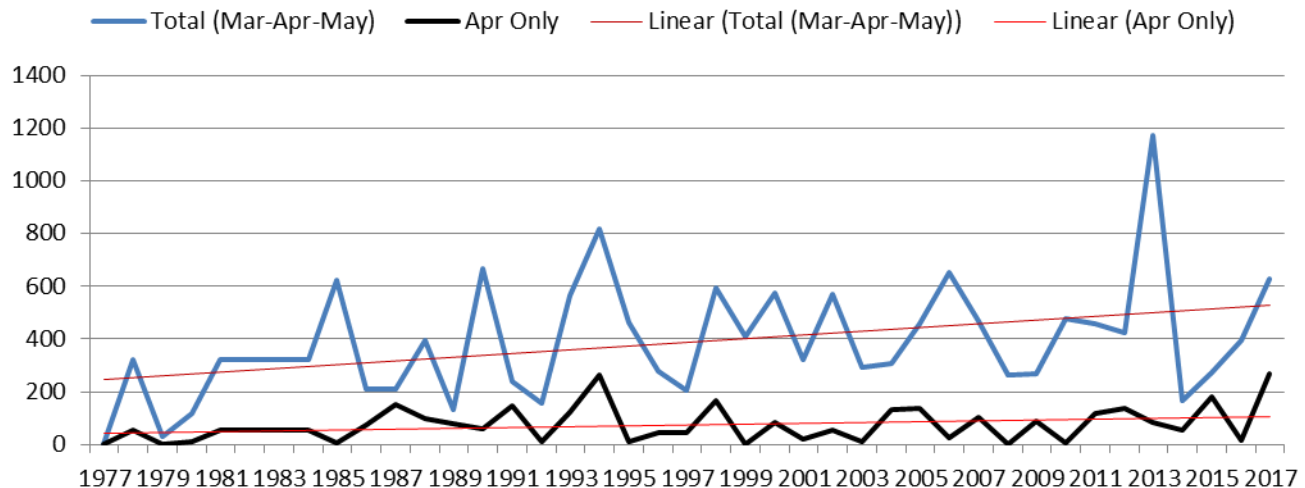
Photo: Md. Mahbubur Rahman

Rainfall Trend in Kutubdia (1977-2017)

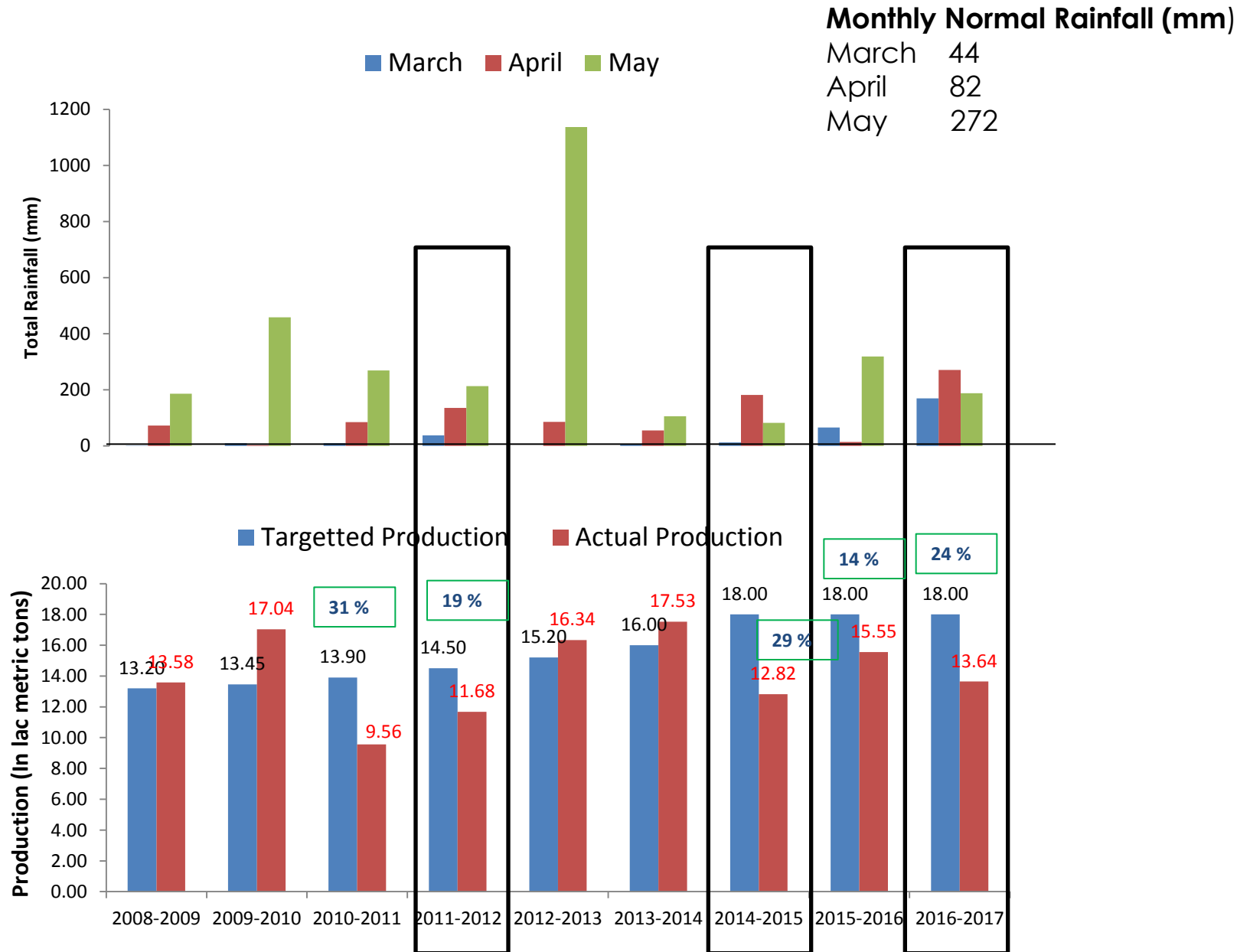
Yearly Total
Rainfall
(mm)



Total
Rainfall in
March,
April and
May (mm)



Critical Stress Moment



Major Climatic Stress Affected Salt Production in Last 10 Years

N = 52

Hazard	Percentage
Cyclone & Storm Surge	48
Erratic & Excessive Rainfall	94 ↑
Inundation	42 ↑
Fog	30 ↑



Photo: Daily Samakal

Other Non-Climatic Factors

- ❖ Fluctuation of salt price
- ❖ Lack of financial capital
- ❖ Changing government regulation
- ❖ Lack of support (e.g. insurance)
- ❖ Weak Implementation of Policy



Photo: Nazir Uddin Mahmud

Economic Loss and Damage

- ❖ Reduced salt production
- ❖ Lost income
- ❖ Reduced livelihood opportunity



Photo: Md. Mahbubur Rahman

Non-Economic Loss and Damage

- ❖ Children drop out of school
- ❖ Breaking social cohesion
- ❖ Psychological Stress
- ❖ Displacement

A family displaced from Kutubdia Island makes a home at Cox's Bazar,

Photo: UNHCR



Measures

- ❖ Rely on support from other people
- ❖ Loan (money or in-kind)
- ❖ Sell properties
- ❖ Use buffers (e.g. Stored food, savings)
- ❖ Advance labour sells
- ❖ Earn extra income
- ❖ Non firm Activities



Photo: Md. Mahbubur Rahman

Indigenous Method for Coping

- ❖ Storing salt in sub-surface
- ❖ Using polythene



Photo: Md. Mahbubur Rahman

A Short Video Documentary



Difficulties to Adopt Effective Measures to Prevent the Impacts

- ❖ Lack of financial support/ loan
- ❖ Lack of skills/knowledge
- ❖ Lack of govt. / non-govt. actions
- ❖ Lack of institutional support



Photo: Md. Mahbubur Rahman

National Salt Policy 2011

Policy Objectives	Reality
Encourage framers to increase cultivation through easy and low-interest loan	Microcredit from NGO, but not government managed loan or incentive
Ensure Fair Price	Price not monitored by Govt. Agencies
Develop improved methodology for cultivation	Absent of climate resilient salt production technology
Build, conserve and repair embankments	Insufficient fund and allocation for repairing the embankments
Build storage facilities	Not sufficient
Discourage salt import	Salt is continuously imported by the Govt. (0.25 million and 0.5 million tonnes of crude salt was imported in 2016 and 2017 respectively)
Develop salt production, transportation, storage, supply and marketing database	Database is poor and not having easy access to mass people

What Instrument Would be Helpful for the Poor Salt Farmers?

Insurance ????

Or

Social Safety Net ???

What Should We Call It??

Act of GOD!!??

Or

Loss and Damage due to CC??

Appeal to Global Community

- ❖ Safeguard the poor and marginalized salt farmers from the adverse affect of climate induced Loss and Damage (L&D).
- ❖ Undertake more research on this significant issue to develop a comprehensive knowledge base database.



Thank You