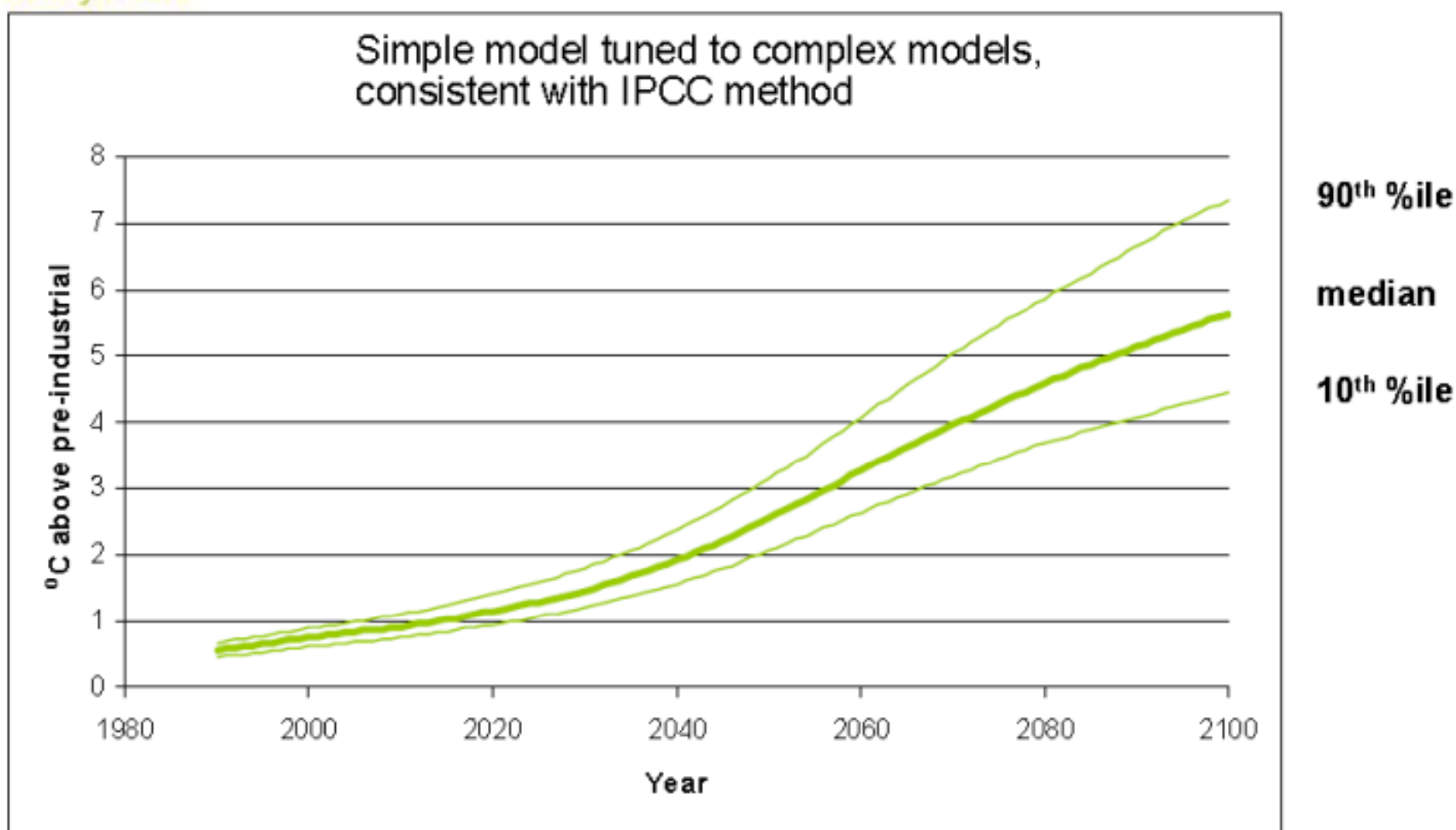




# Range of global warming projections for A1FI (high emissions) scenario, including carbon cycle feedbacks



Adapt to

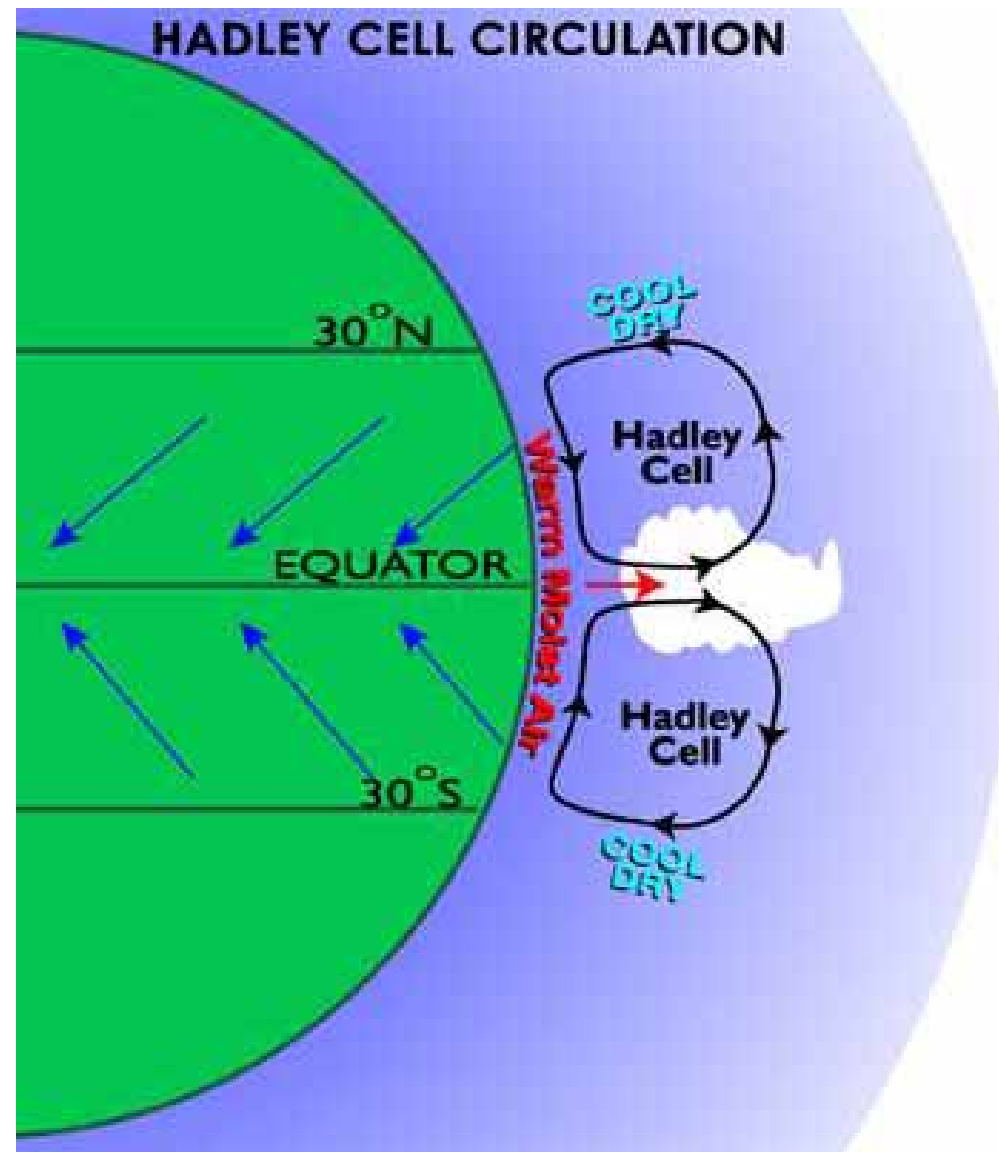
- Physical changes
- Political constraints
- Prevent runaway  
climate change



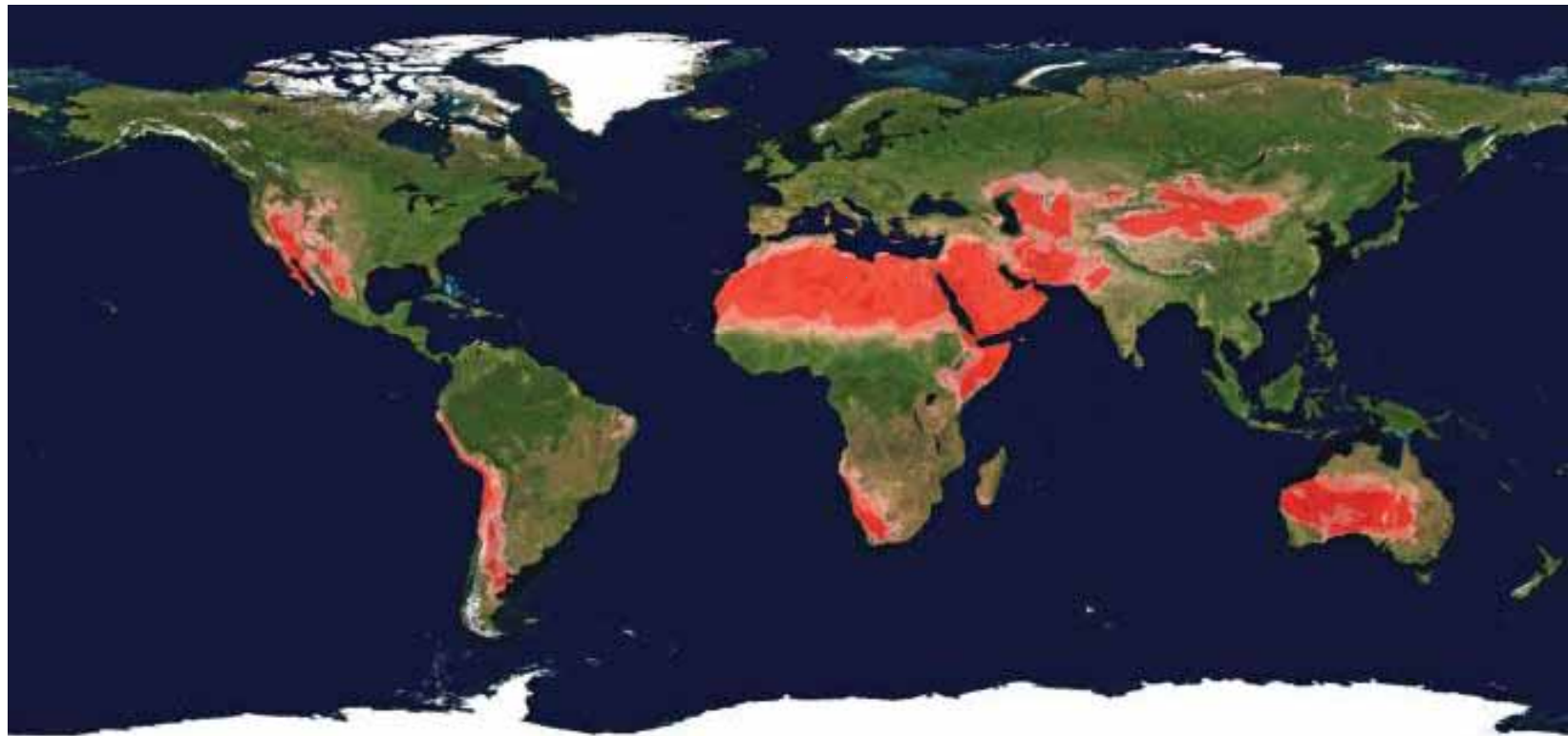




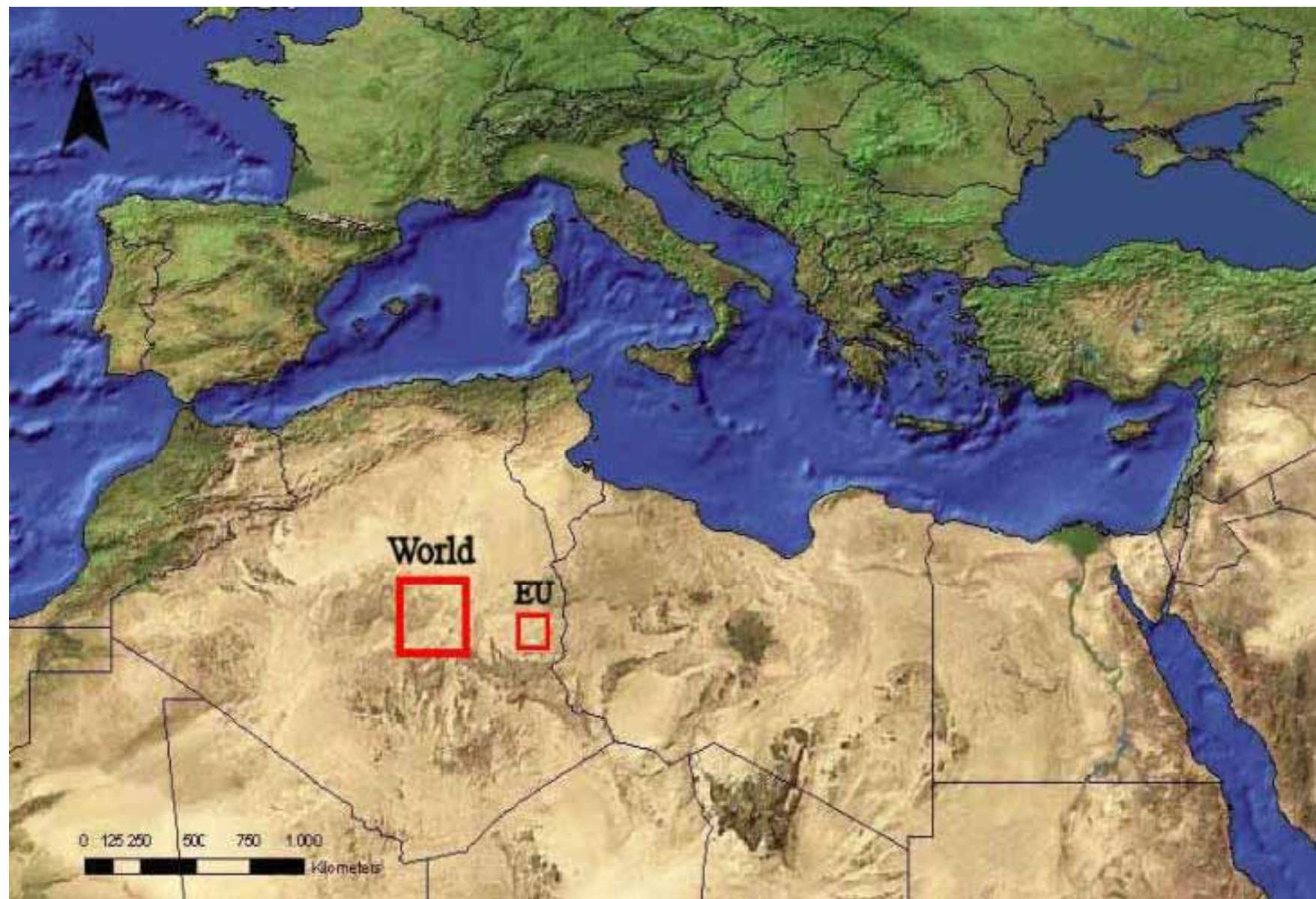
## HADLEY CELL CIRCULATION



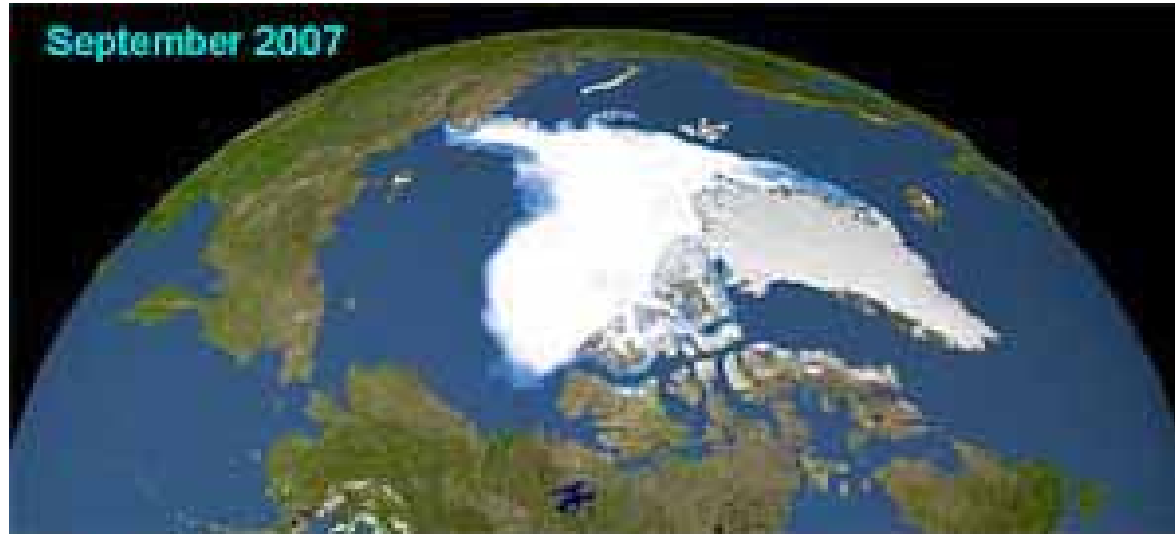




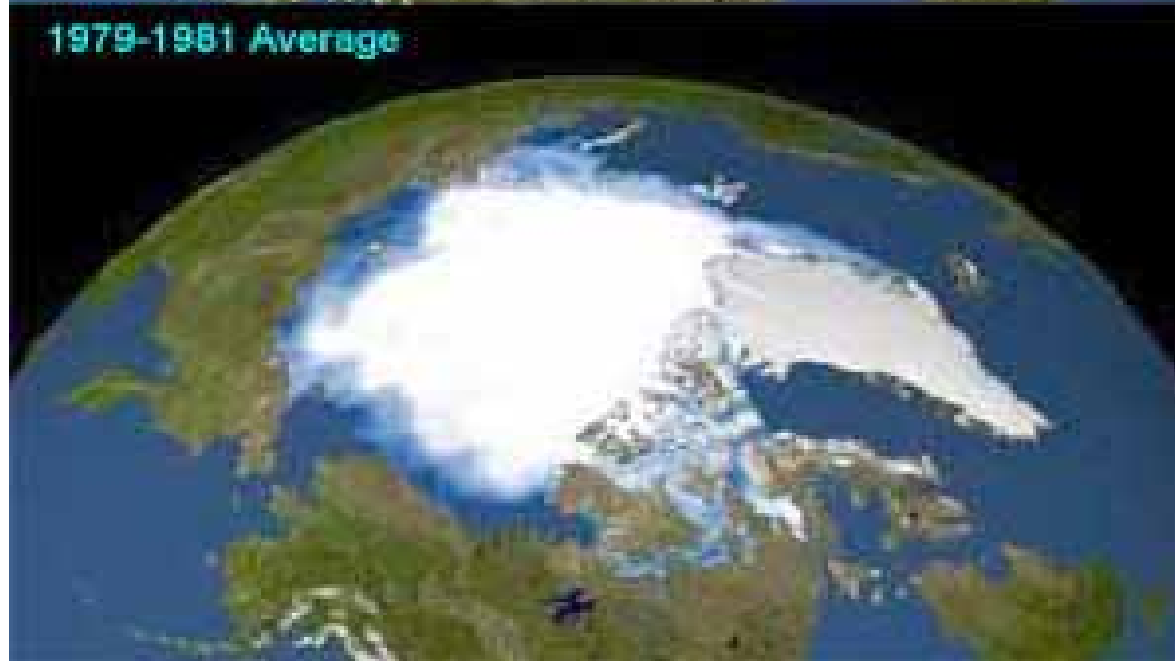




September 2007



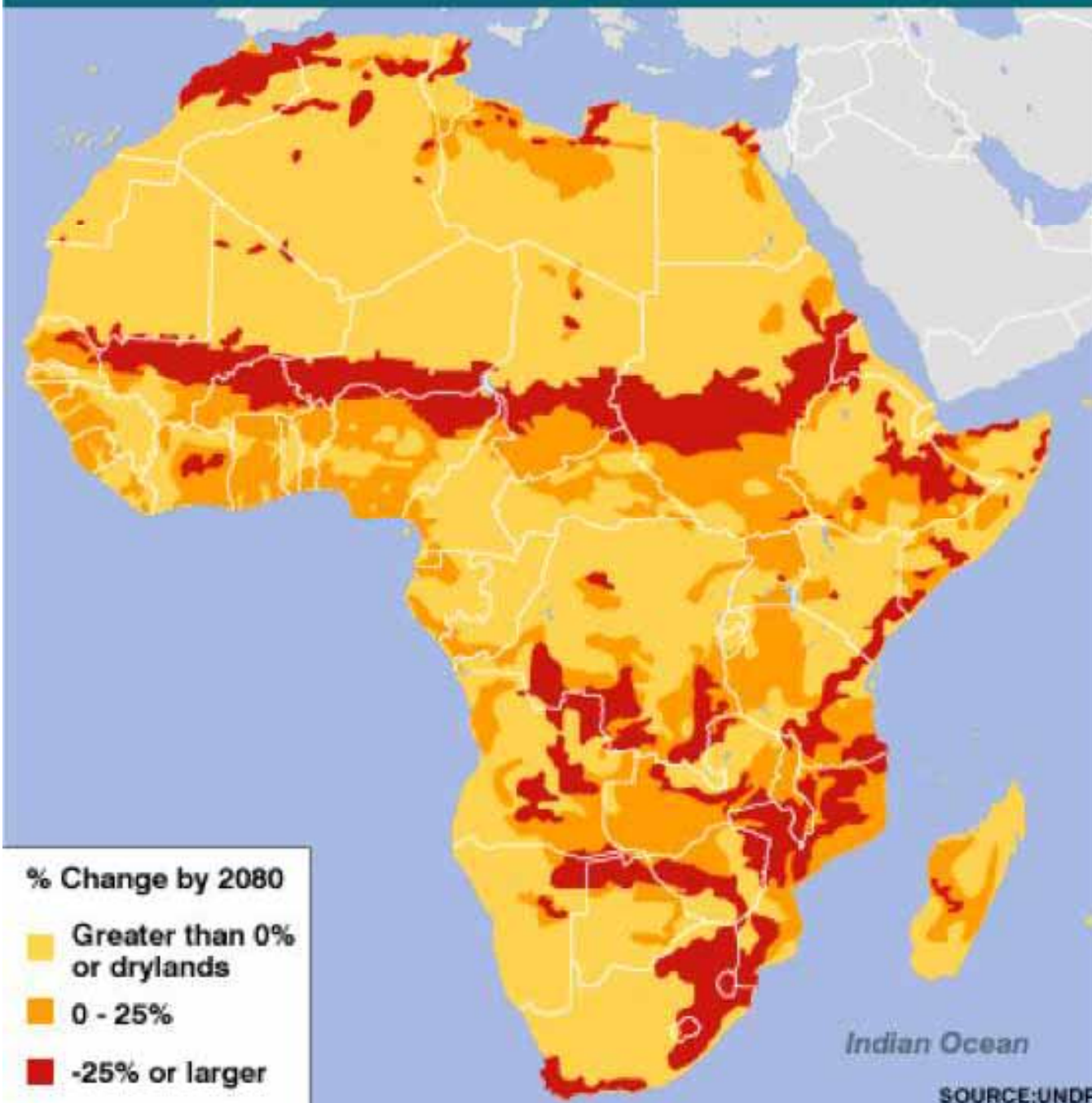
1979-1981 Average







## PROJECTED IMPACT OF CLIMATE CHANGE ON CEREAL PRODUCTIVITY IN AFRICA



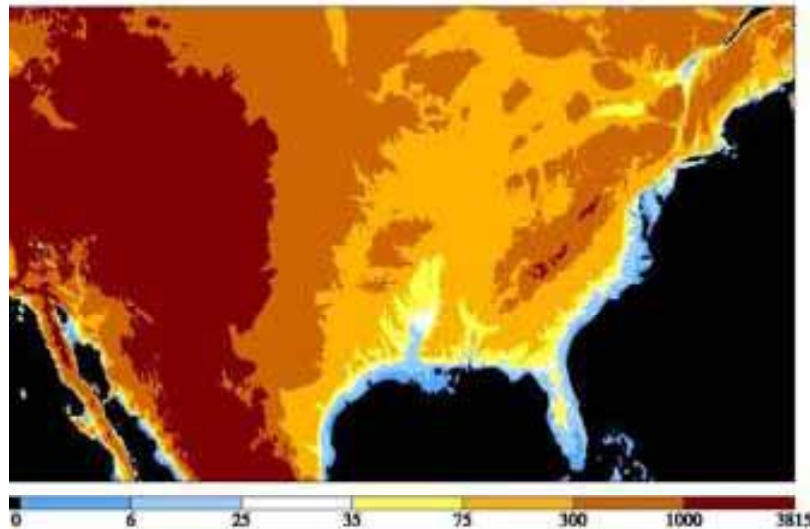




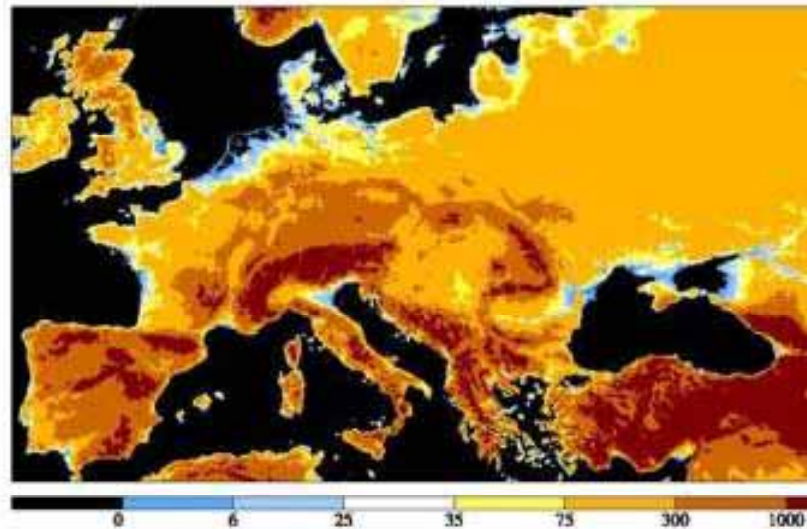


# Areas Under Water: Four Regions

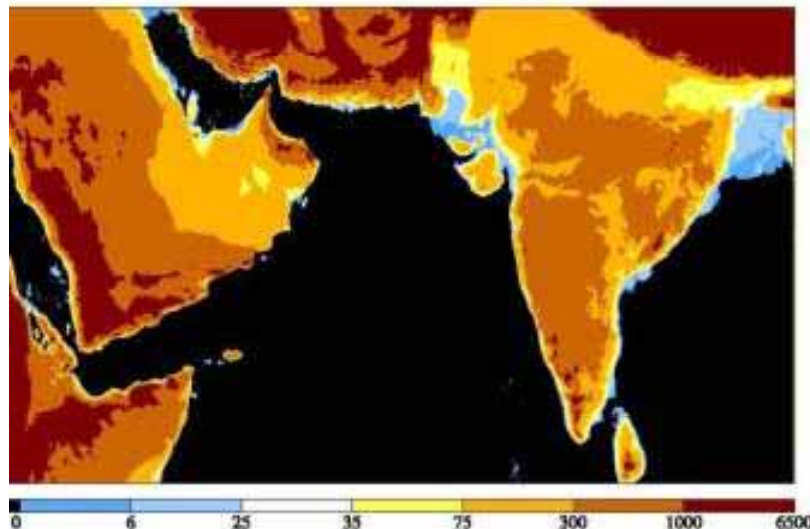
U.S. Area Under Water



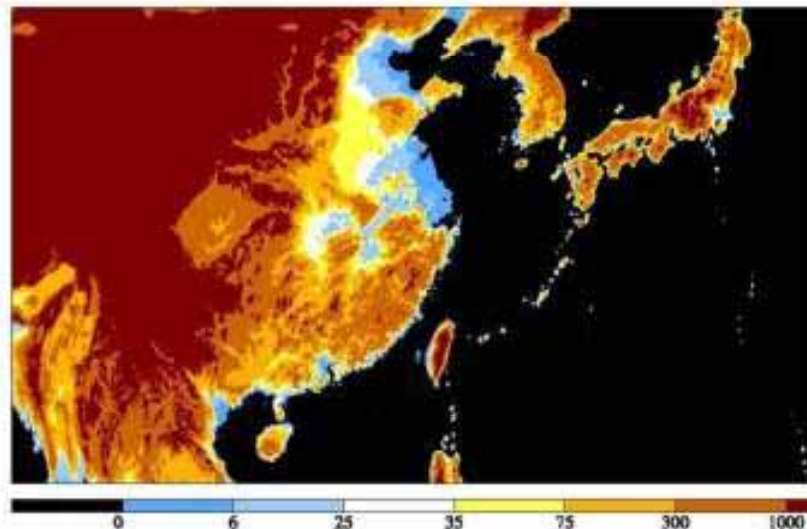
Europe Area Under Water



Central Asia: Area under Water



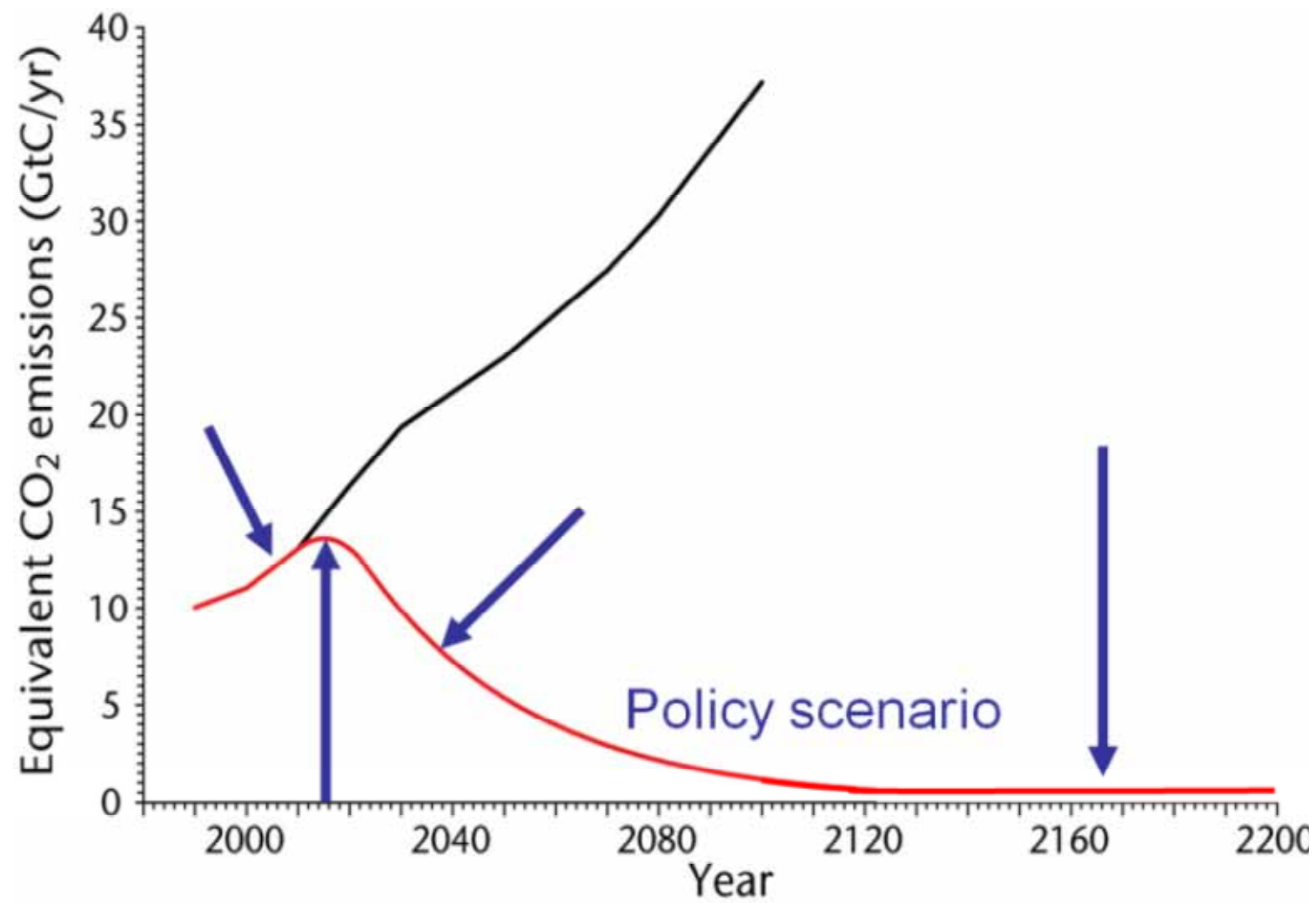
Far East: Area under Water





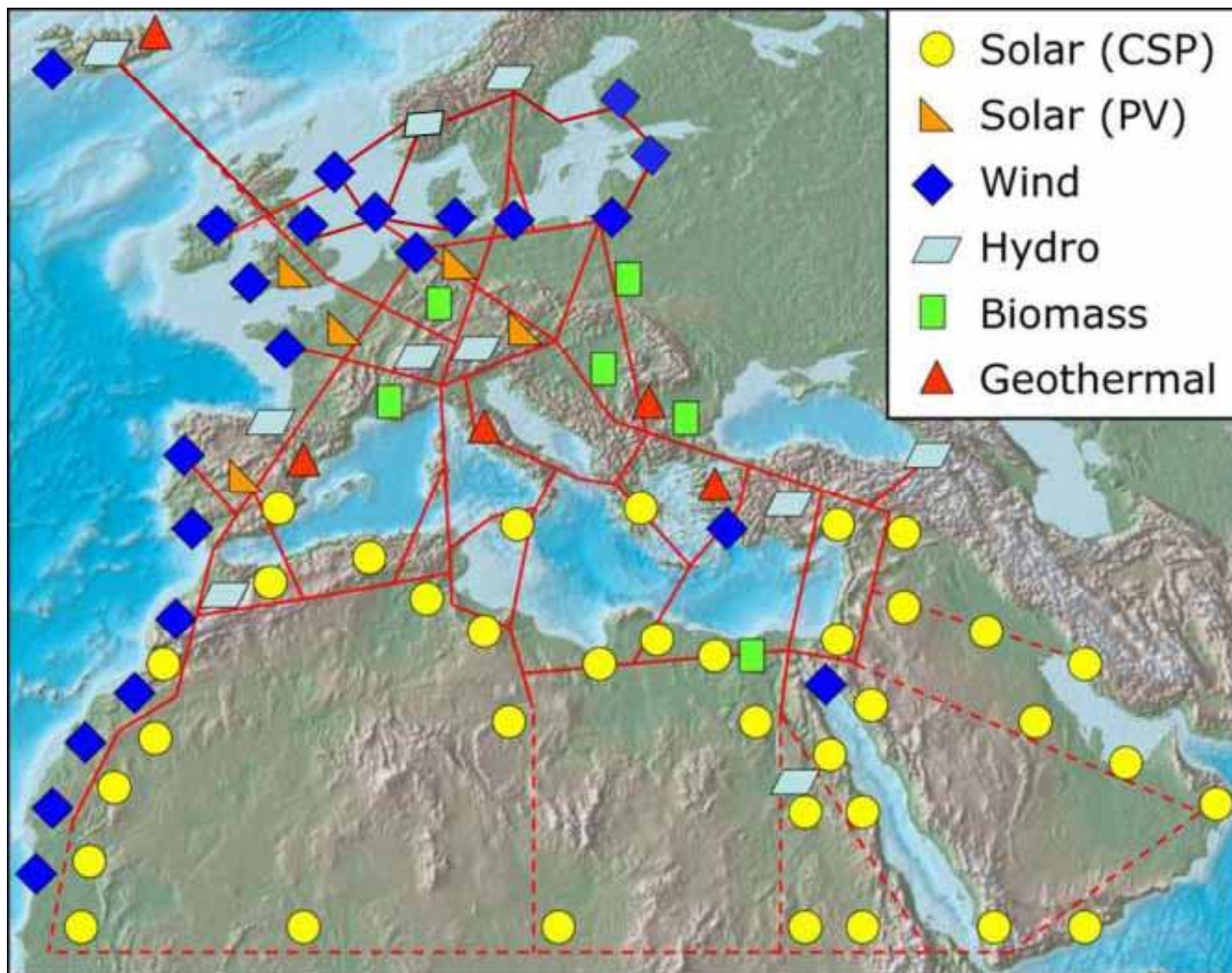








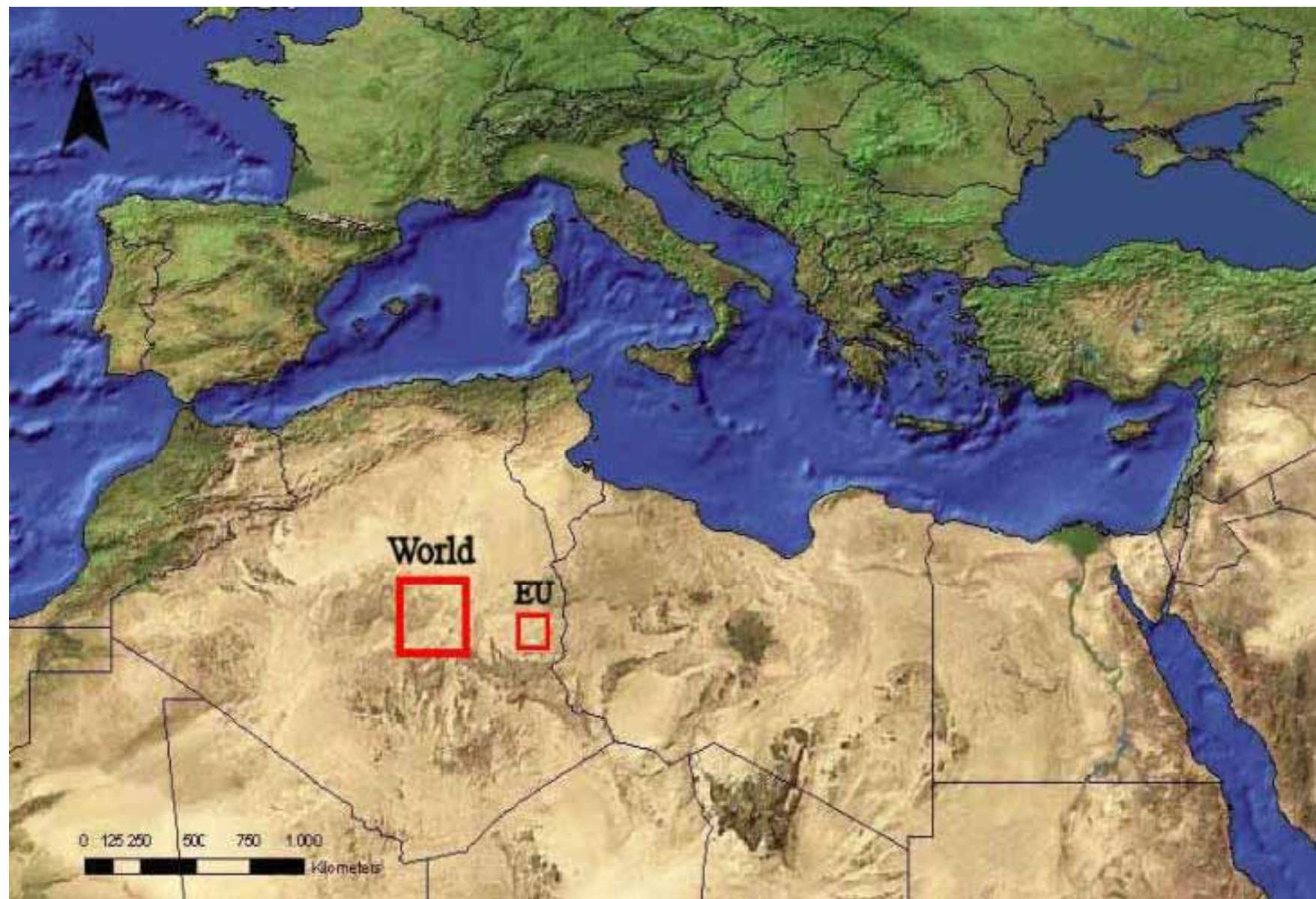






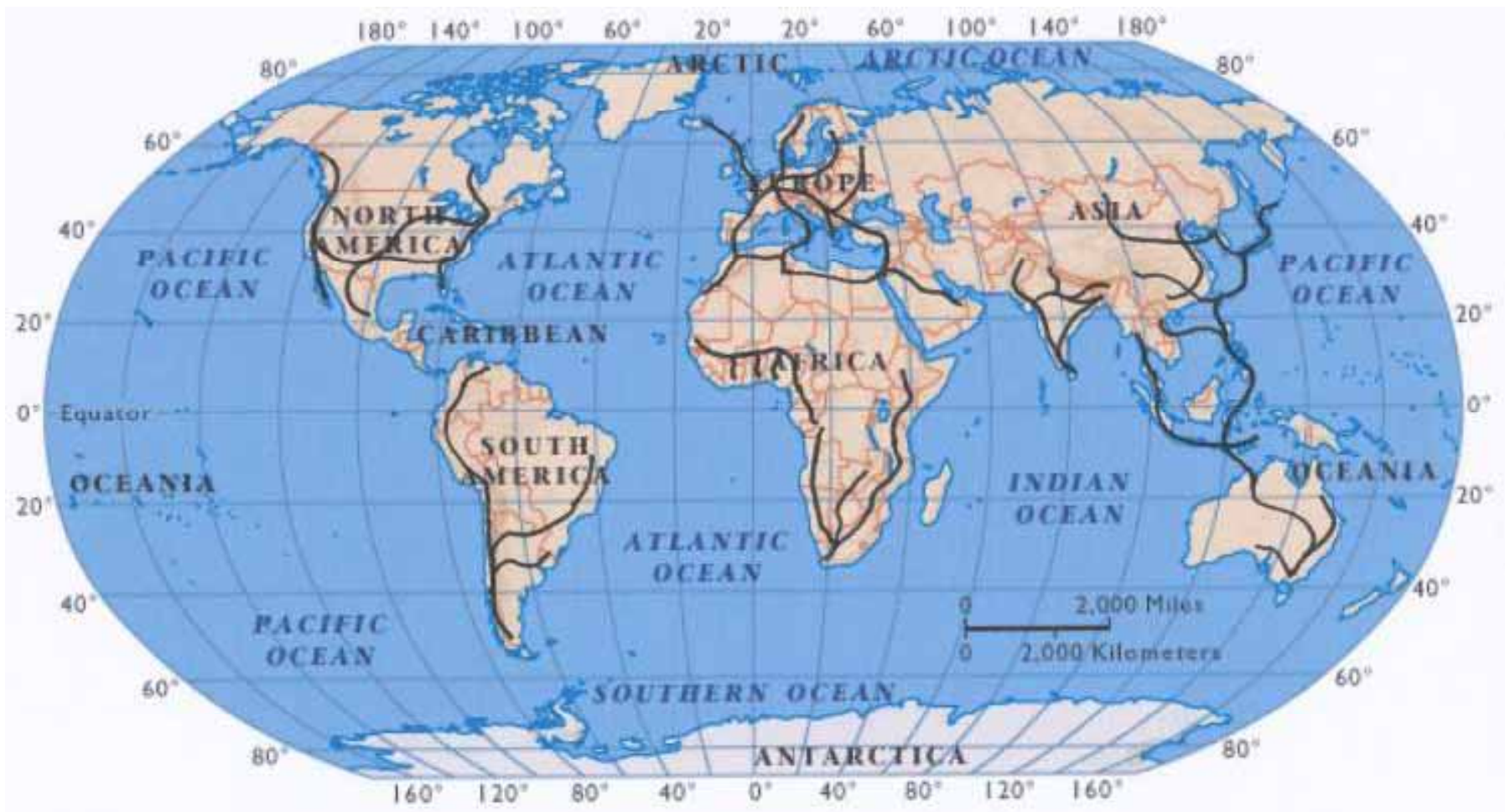












**Security**

**Price stability**

**Employment**

**Economic assets**

**Climate**

**Health**













