

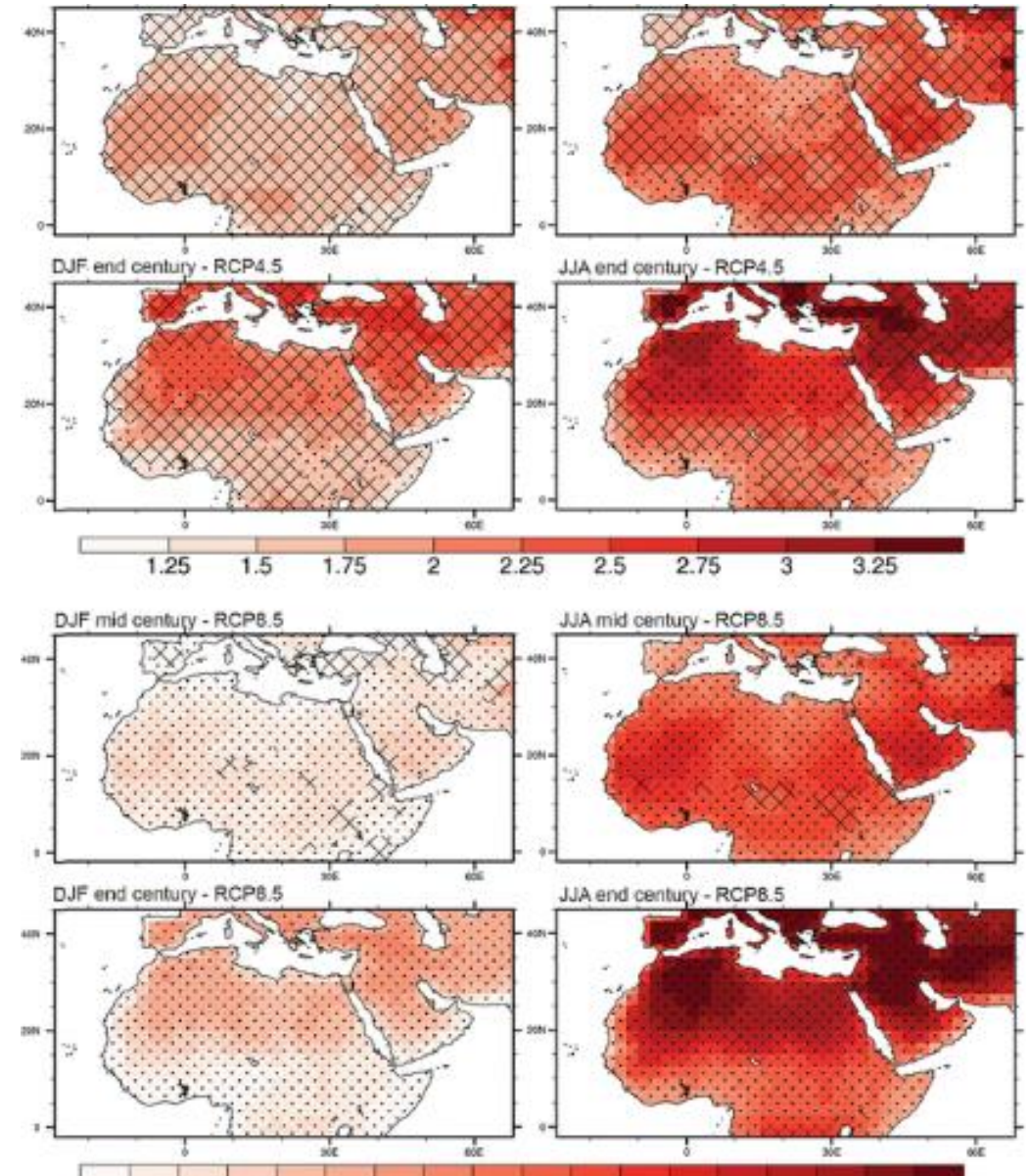
LoCAL
LOCAL CLIMATE ADAPTIVE
LIVING FACILITY



why give support at the local level?

Local governments from LDCs and other developing countries :

- 🌱 are in a unique position to identify and implement the responses that best **meet local needs**
- 🌱 typically have the **mandate** to undertake small to medium sized interventions and investments required for building climate resilience.
- 🌱 face a **funding gap** (regular transfers, additional costs, centralized climate financing, etc.)
- 🌱 face a **capacity gap** (data, risk informed planning, MRV)





The local climate adaptive living facility: **LoCAL**

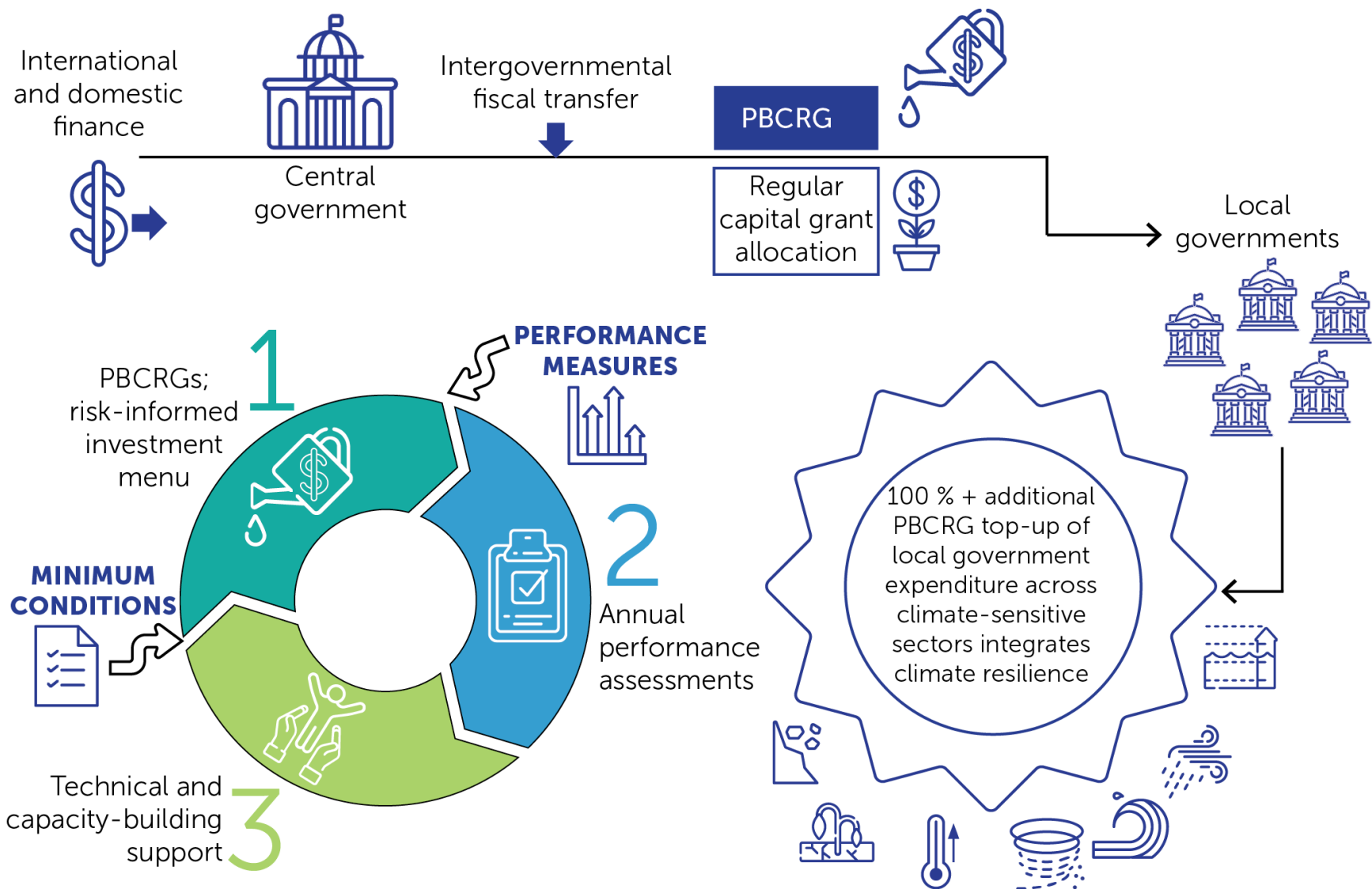
A mechanism for financing **locally led adaptation** to enable local authorities and their communities to contribute to the implementation of the **Paris Agreement, NDCs, NAPs** and SDG 13 and deliver on Paris Agreement commitments.

- Designed by UNCDF to help local governments and their communities **access and effectively use climate finance at the local level**
- Promotes the **integration** of climate change adaptation (CCA) in **local government planning and budgeting systems** in a participatory and gender sensitive manner
- Uses innovative **Performance-Based Climate Resilience Grants (PBCRGs)** to guarantee programming and verification of local adaptation expenditures



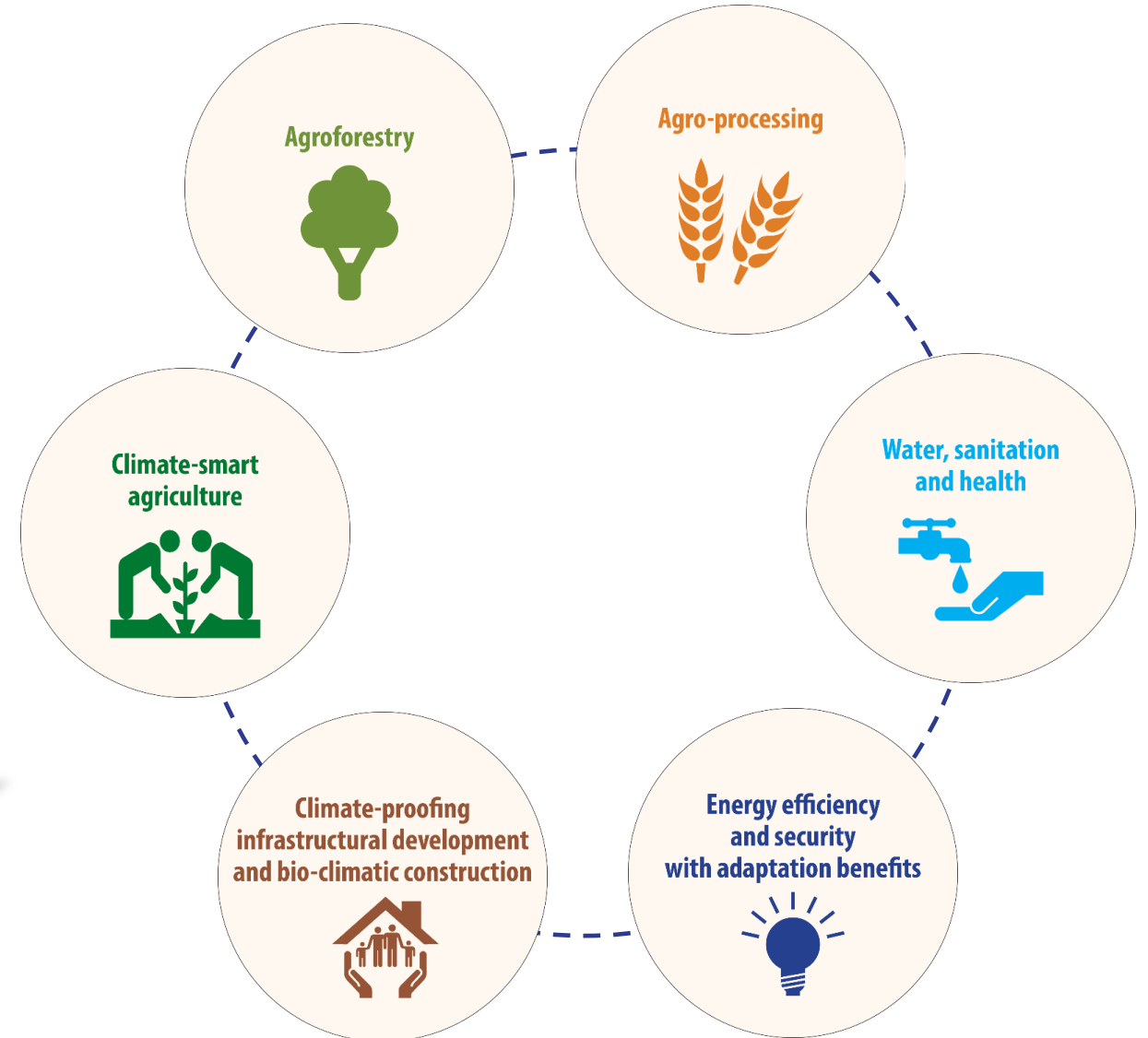
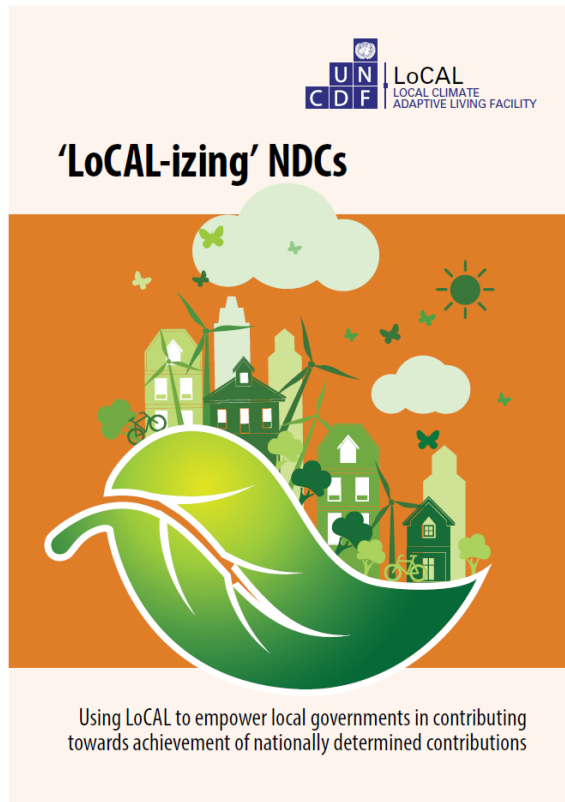


The LoCAL mechanism

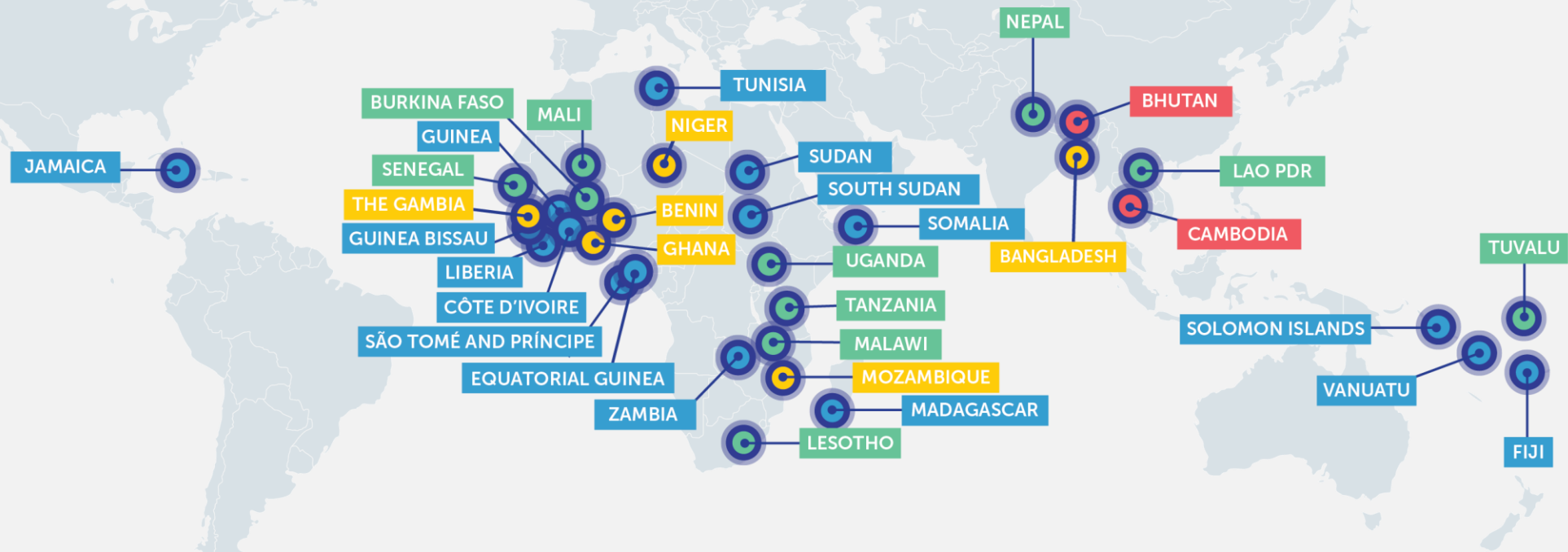


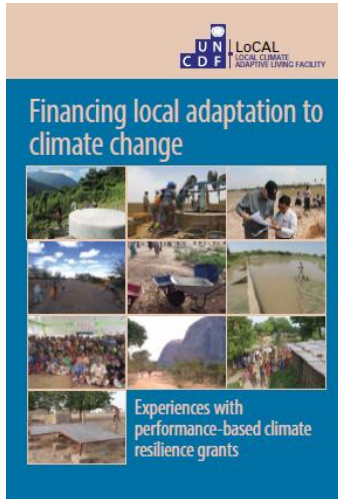


LoCAL: an investment menu aligned with NAPs & NDCs



LoCAL expansion mapped





LoCAL Recognition



LoCAL

Referenced by the UNFCCC **standing committee on Finance** as an “initiative supporting **domestic national budget systems** to target adaptation actions at the local level, while reinforcing transparency and reporting through those systems.”

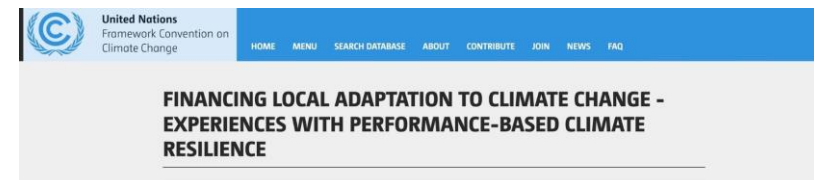
LoCAL

Endorsed by the LDC **Expert Group to the UNFCCC** as **supplementary material** to its **National Adaptation Plan** technical guidelines and related **ISO standard** application



LoCAL

Presented as **existing Non-Market Approach (NMA)** by LDC group, RCI, Ghana, and referenced by Kenya and AGN (Glasgow Committee on Non-Market Approaches)



LoCAL

A recognized tool for **financing local adaptation** to climate change in the **UNFCCC Adaptation Knowledge Portal**



Mediating the subnational level's direct access to climate change finance

- LoCAL countries (Bhutan, Benin, Cambodia, Mali, Niger and Tanzania) have nominated a national entity for accreditation to GCF, engaged with LoCAL. The FNEC of Benin and NCDD-S of Cambodia were **accredited** as a GCF National Implementing Entity in 2019 and Bhutan TFEC in 2020.
- Bhutan, Benin, Cambodia are preparing further national scale-up through **direct access to GCF**, as is Uganda and Tanzania (AF)
- 4 **west African** countries have submitted a proposal to the GCF through a Regional Accredited Entity (BOAD) for direct access (100 local governments). 4 more are preparing with the Secretariat of the **Pacific Community (SPC)**.
- LoCAL is supporting the preparation of **7 projects for USD 185 million portfolio to GCF/AF** with more to follow.



LoCAL
LOCAL CLIMATE ADAPTIVE
LIVING FACILITY

LoCAL Board Observers



LoCAL Partners



thank you
local.facility@uncdf.org

