

Loss & Damage in Vulnerable Country Initiative

Dr. Koko Warner

Executive Director Munich Climate Insurance Initiative (MCII) hosted at
UN University

**Government of Bangladesh High-Level Side Event: Loss and
Damage in Vulnerable Countries**

5 December 2011, 18:00 – 20:00

COP17, Durban

Where we are today



Climate variability



**Interactions between
climate variability &
climate change**

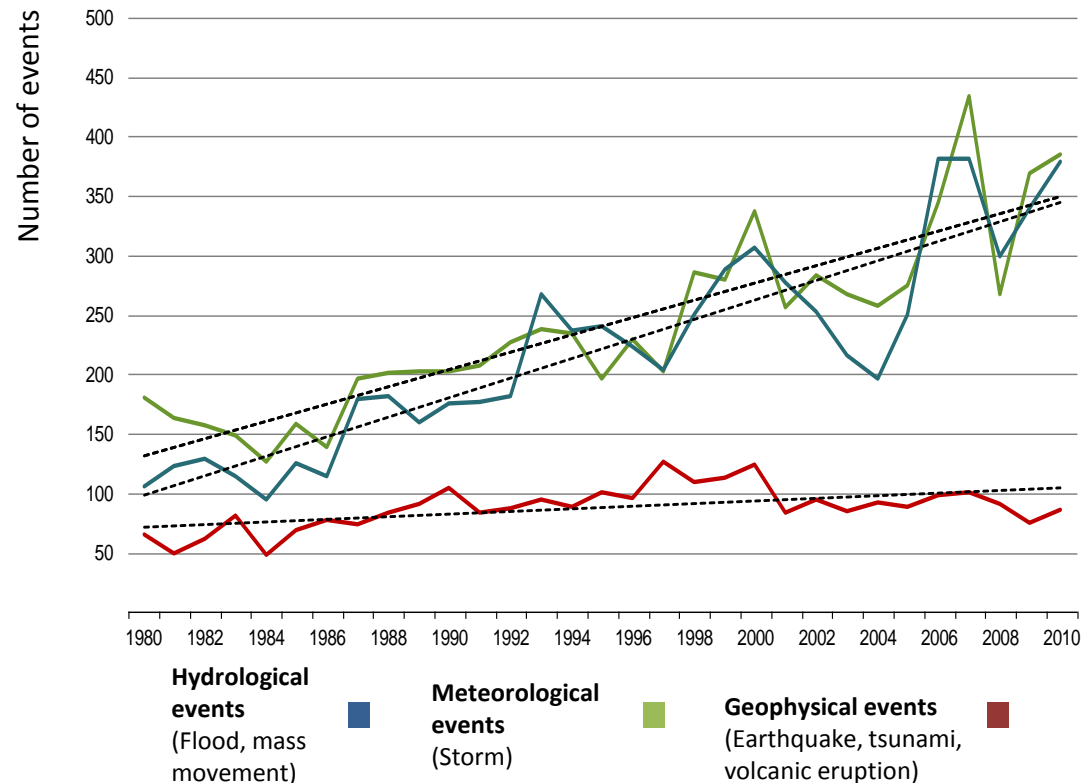


Climate change



From weather-risk management to issues that go beyond adaptation

Natural catastrophes worldwide, 1980 – 2010, events by peril with trend



IPCC review of potential likely climate change impacts (AR4, SREX)

- Viability / habitability of some regions for human settlement and livelihoods
 - Sea level rise
 - Desertification
 - Ecosystem change / degradation
 - Food Security
- Limits of adaptation? How fundamental must adjustments must be to address loss and damage which may be difficult or impossible to retribute.

SBI Work programme



1. **Cancun established Work Programme on Loss & Damage:** Content – climate risk facility – risk management – slow onset risks: Landing point is COP 18 for recommendation
 2. **Bonn 3 thematic areas:** Assessing the risk; Range of approaches; role of the convention
 3. **Durban SBI achieved consensus on activities for 2012:** Expert meeting on assessment; 4 regional workshops for implementation approaches; further session on role of the convention
-
1. **Durban:** “Appreciates the need to explore a range of possible approaches and mechanism, including an international mechanism”

Loss & Damage at COP17

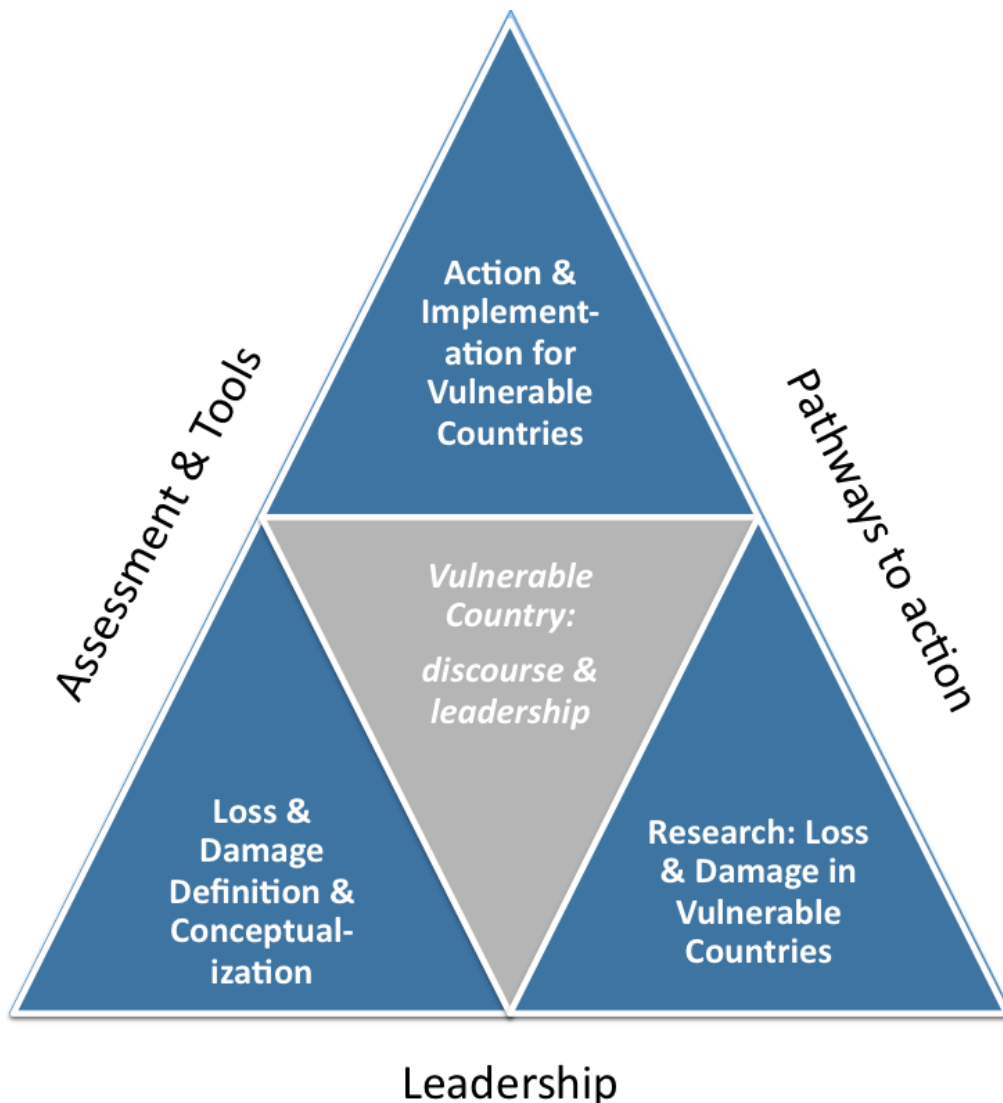
- **Draft decision -/CP.17 :**

“Appreciates the need to explore a range of possible approaches and mechanism, including an international mechanism...with a view to making recommendations on loss and damage to the Conference of the Parties for its consideration at its eighteenth session”

- **Milestones for 2012**

- 5 expert workshops
- 3 thematic areas to enhance understanding
- 2 Technical papers and Literature review
- Input by relevant stakeholders
- Address questions on assessment of & range of approaches on loss & damage

The path ahead



1. **Assess exposure to a spectrum of loss and damage impacts**, ranging from climate variability to longer-term climate change (concepts & methods, case studies)
2. **Examine range of tools to manage short- and longer-term loss and damage**
3. **Develop policy scenarios** for policies and actions to mediate and reduce the negative impacts of loss and damage situations.
4. **Support leadership through consultations** with Government of Bangladesh and LDC leadership, help vulnerable countries in their position building on loss and damage towards COP18.

Activities at COP17 and beyond

At COP17

- Party consultations
- IPCC SREX analysis paper
- Glossary on loss & damage
- Background paper on loss & damage
- LDC country risk profiles
- Side events on loss & damage

Possibilities, towards COP18

- Leadership: Capacity building & strategic workshops
- Expert workshops to complement SBI WP
- Assess risks: Concepts, methods & case studies
- Explore implementation of tools for risk mgt
- Develop policy scenarios and recommendations

The Initiative Consortium



This document is an output from a project funded by the UK Department for International Development (DFID) for the benefit of developing countries. However, the views expressed and information contained in it are not necessarily those of or endorsed by DFID or the members of the Climate and Development Knowledge Network, which can accept no responsibility or liability for such views, completeness or accuracy of the information or for any reliance placed on them.

www.cdkn.org