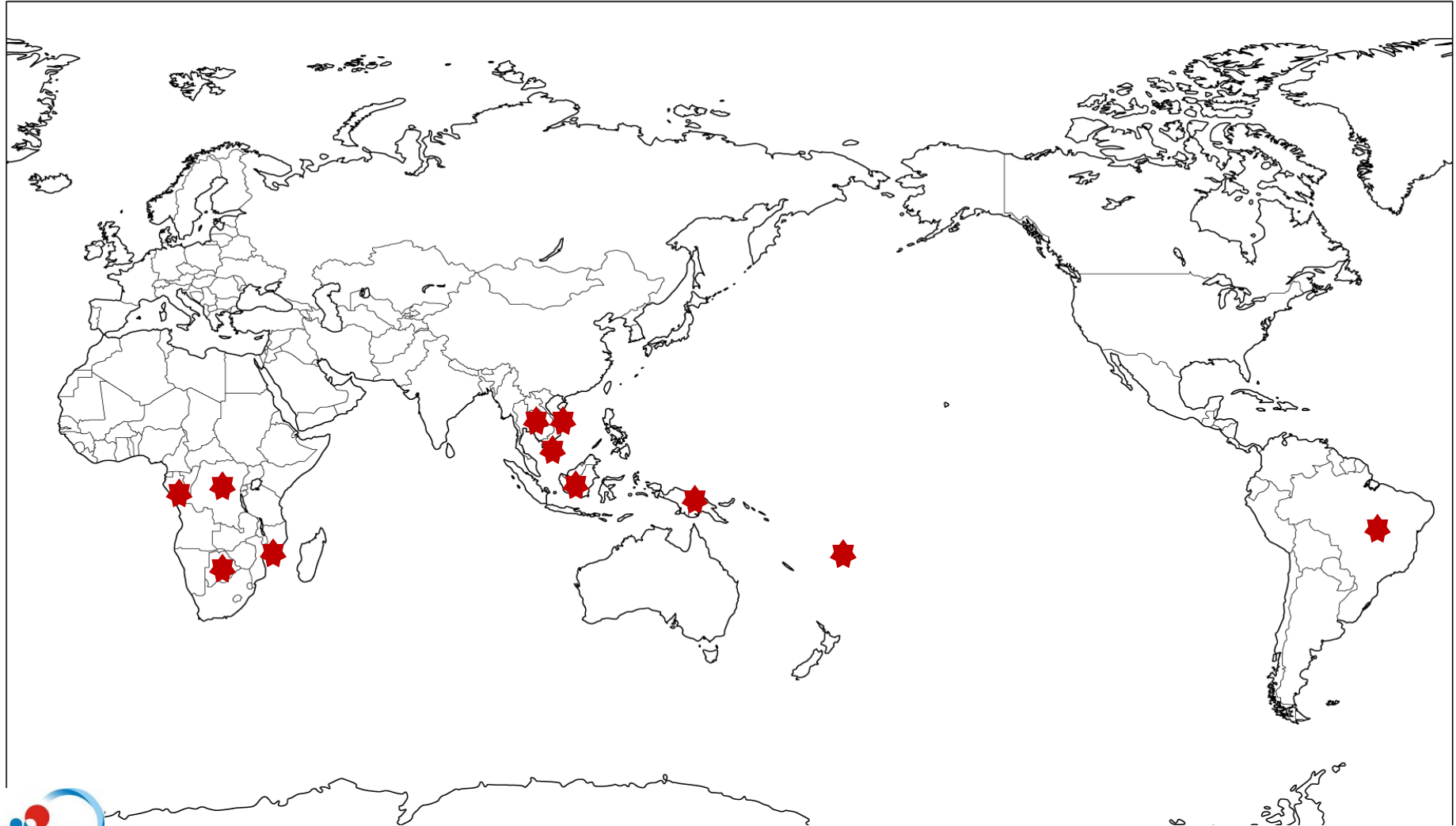


JICA' approach to REDD+ MRV

UN Climate Change Conference COP18/CMP8
5 December 2012
Doha, QATAR

Hiroki MIYAZONO
Japan International Cooperation Agency (JICA)

JICA's REDD+ related projects



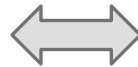
JICA's Vision: Forests for people



- Sustainable land-use management
- Sustainable Forest Management



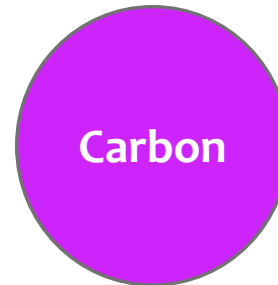
Landscape (SATOYAMA) Approach



- Benefits for communities through enhancement of social services (income, education, health etc.)



- “Collaborative management with local communities”



- Economic values of biodiversity conservation and other environmental services(PES)
- Financial mechanism through carbon credit

Participatory REDD+ project in Laos (2009-2014)



Shifting cultivation



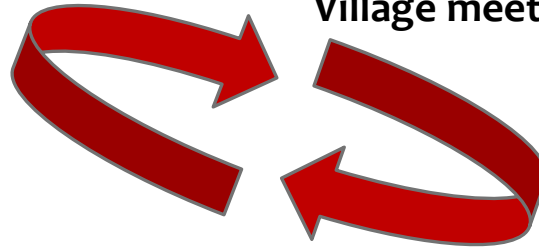
Village meeting



Boundary checking



Participatory monitoring



On-site planning



Field survey

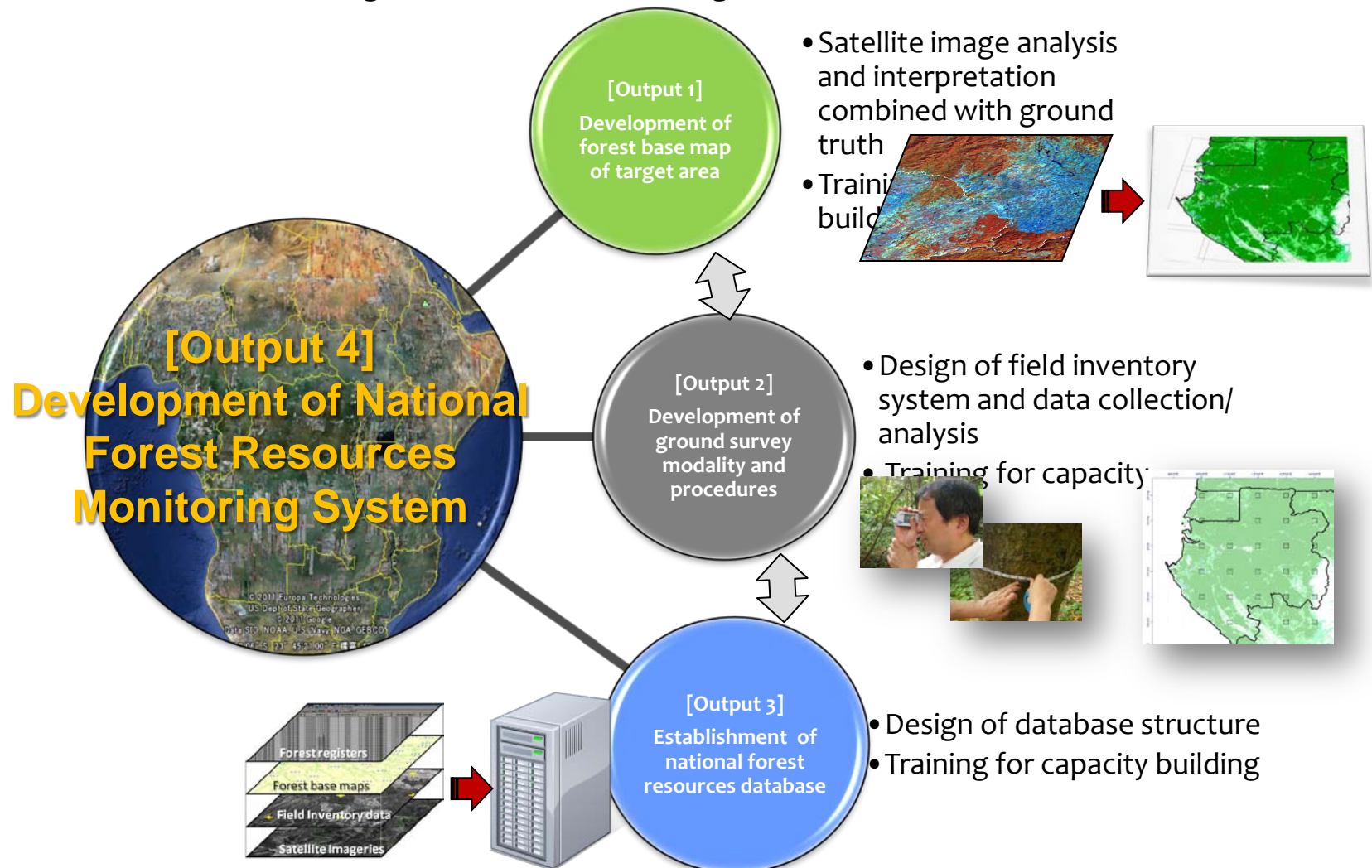


Land-use planning

National Forest Monitoring System

Democratic Republic of Congo

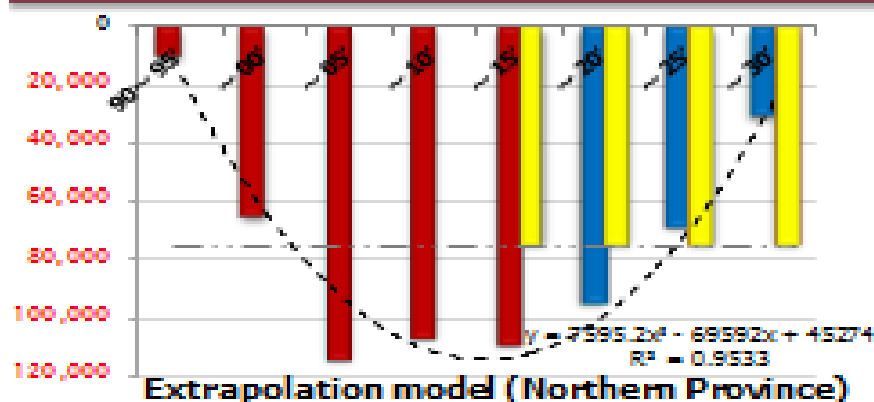
Project for Strengthening National Forest Resources Monitoring System for Promoting Sustainable Forest Management and REDD+



Development of REL/RL (in Vietnam)



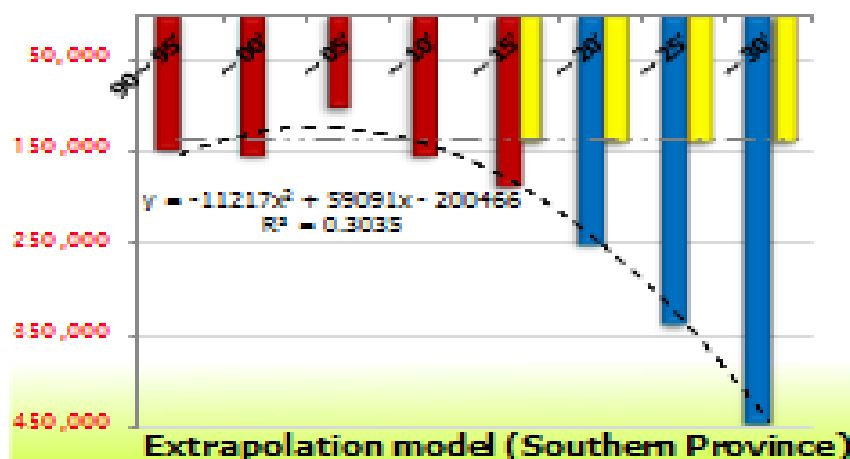
3. Time-points of data and extrapolation method



- Source (Observed)
- Estimate (Average)
- Estimate (polynomial)
- Extrapolate (polynomial)
- Extrapolate (Average)

$\Sigma(\text{Estimate Average}) = 331 \text{ (MQt)}$

$\Sigma(\text{Estimate Polynomial}) = 300 \text{ (MQt)}$



The extrapolation models have to be scrutinized to make an appropriate selection. Otherwise, over/underestimation is likely to take place.



$\Sigma(\text{Estimate Average}) = 547 \text{ (MQt)}$

$\Sigma(\text{Estimate Polynomial}) = 1,217 \text{ (MQt)}$



Research & Development

Carbon Dynamics of Amazonian Forests (Brazil)



Wild fire & Carbon management in Peat-forests (Indonesia)



Key messages (I.)

I. What are the characteristics of JICA cooperation?

✓ Are they different from others?

- In principle, JICA does not start from Carbon, but from multiple benefits of forests.
- Participatory MRV does not necessarily mean participatory Carbon Monitoring, but does mean participatory Forest Monitoring.
- Local communities have a right to know, but at the same time have a right not to be involved.
- No one size fits all approach, but Capacity building is always the core part of any JICA cooperation.

Key messages (II. & III.)

II. What are the real needs of the countries?

✓ Can JICA cooperation meet such needs?

III. What should be the way forward for countries and JICA?

✓ What is the difference between WITH-REDD+ and WITHOUT-REDD+?

Thank you for your attention

Miyazono.Hiroki@jica.go.jp