



240 million people now – one estimates 500 million people in 2040

200 million ha of land, with >50% forest cover

Ever-growing middle class: higher demand for goods and services with quality

Price and technology

e.g., shale-gas discovery
in the US

....

Population pressure

Food security, competing
demand for land

Fuel subsidy

Fossil fuel subsidy affect
biofuel production

....

....

These various externalities in supply-demand of fuel
may affect the policies on biofuel development

Some proposes the use of degraded land

- [6 million hectares](#) of degraded land “available for oil palm expansion” according to a senior official of the Indonesia Investment Coordinating Board (Reuters 2010).
- [7 million hectares](#) of unused/abandoned degraded land (“tanah terlantar yang kondisinya sangat kritis”) according to Ministry of Forestry, February 2010.
- [8.5 million hectares](#) of alang alang grassland (Garrity 1997).
- [7-14 million hectares](#) of degraded, abandoned lands that may be used for agricultural development according to Fitriani Ardiansyah, director of climate and energy WWF-Indonesia, (Jakarta Post 2010).
- [12 million hectares](#) of “idle land” the National Land Agency (BPN) indicates could be used for business purposes, according to the Forestry Minister (Jakarta Post 2010).
- [31 million hectares](#) of “unused land” considered “suitable” and “available” for agriculture (Agricultural Research & Development Body 2007, cited in Indonesia’s draft REDD+ policy).
- [40 million hectares](#) of “degraded forests” within the forest estate according to the Forestry Minister (Jakarta Post 2010).

Indonesia needs consistent definition and map as reference

Example:

Overlay of forestry-plantation-mining areas in Pasir District (East Kalimantan)

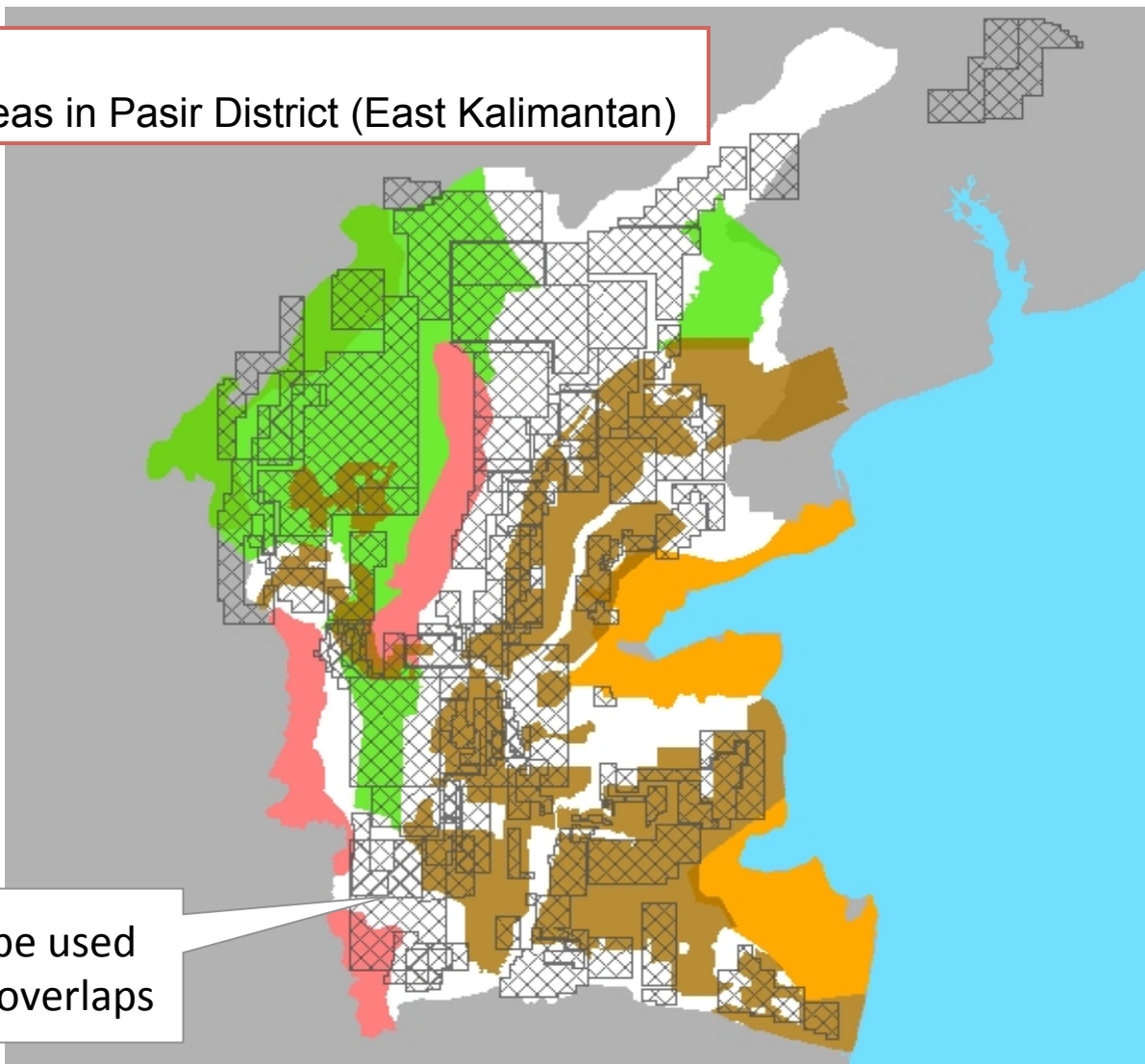
Protected Forest and
Conservation Area...

...overlay with HPH and HTI
areas...

...overlay with plantation areas...

...overlay with mining area

Integrated license database can be used
as starting point to solve license overlaps





“
... (there) should be
One Map as the one
and only national
reference!”

President Susilo Bambang Yudhoyono
Cabinet Meeting
23 December 2010

