



MRV and Monitoring for Effective REDD+ Implementation

10th December 2009

Peter Holmgren FAO



Key Questions

1. Why?

- Policy frameworks

2. What?

- Specifications of Needs

3. How?

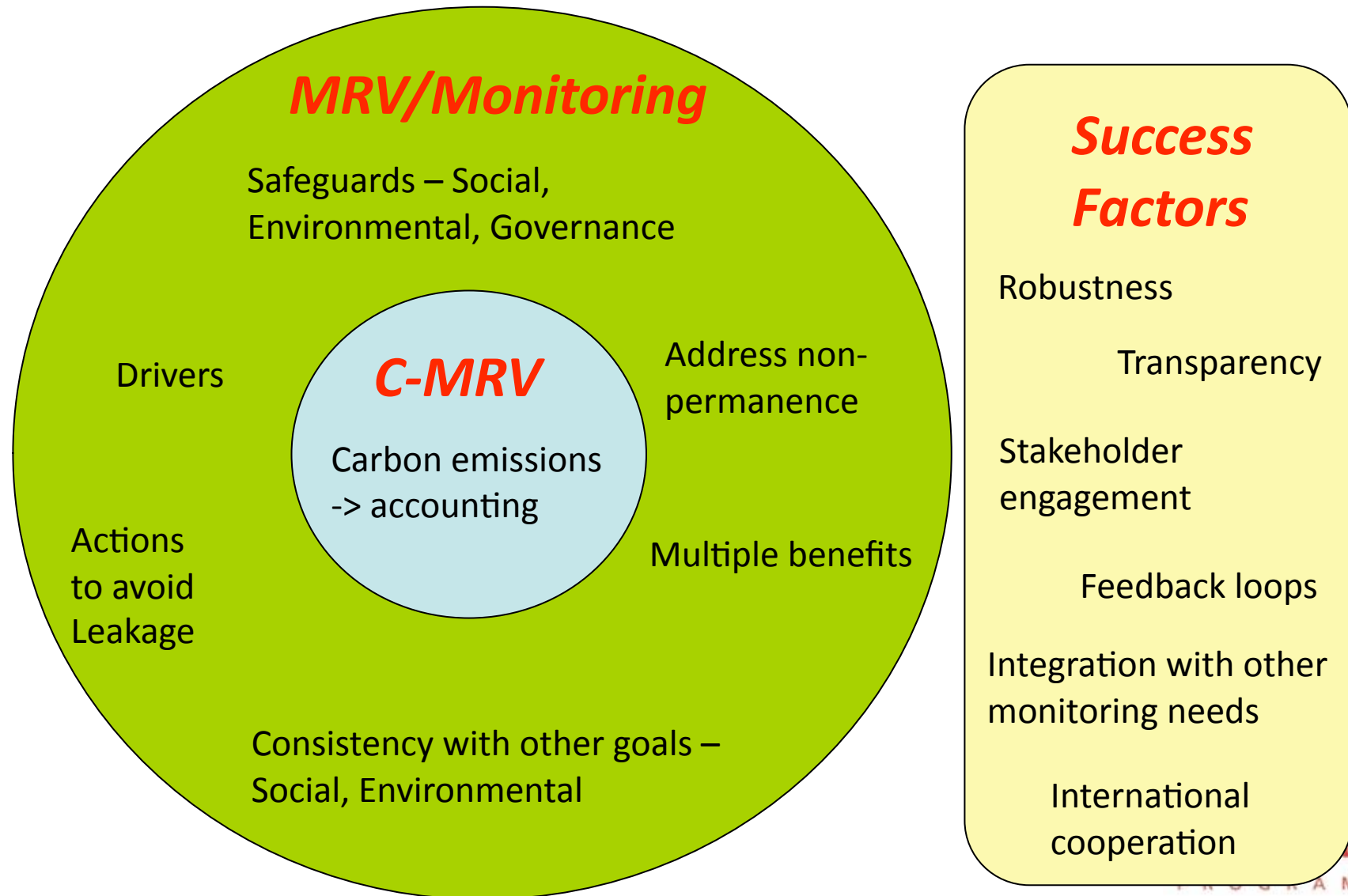
- Institutions, capacities
- Methods

4. How much?

UN-REDD delivers on MRV/Monitoring for REDD

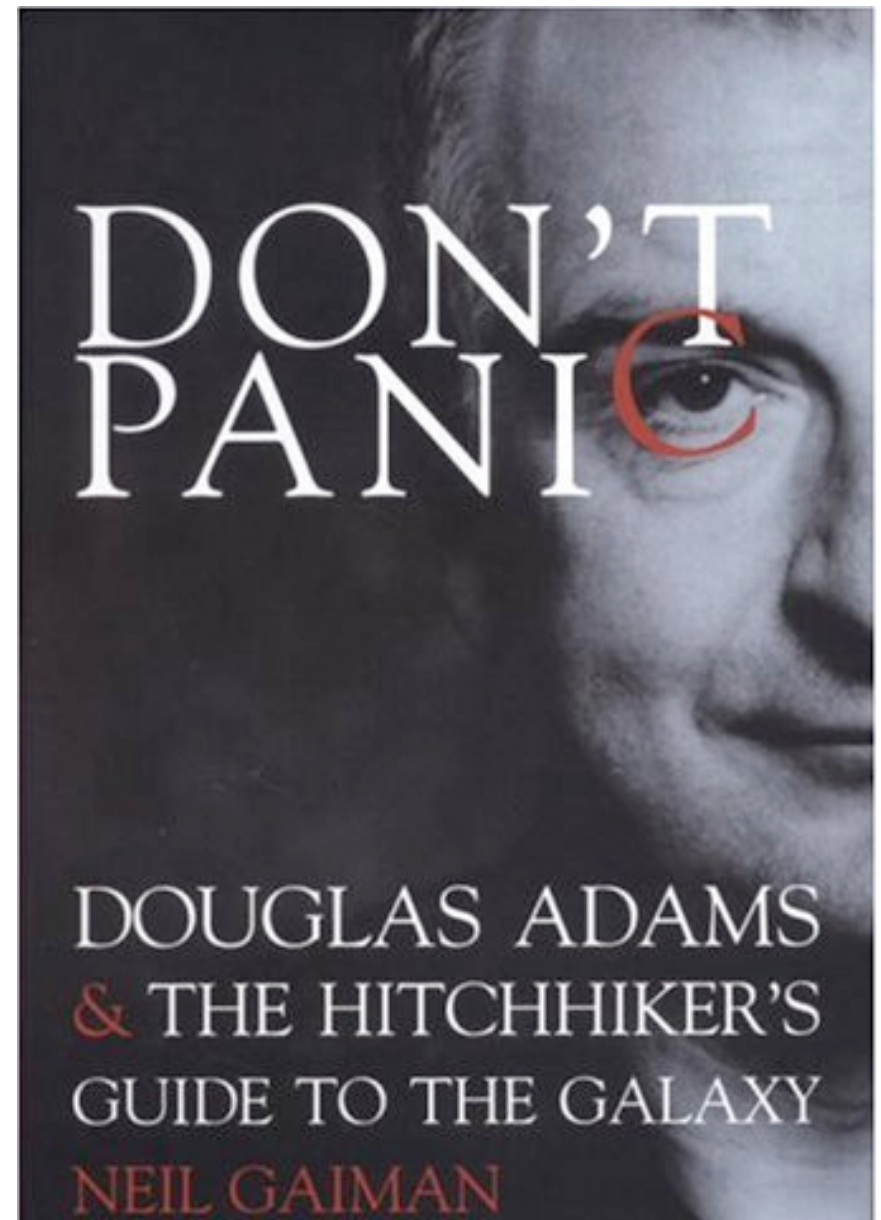
- at **Country** level
- at International/**Global** level
- with **Partners**
- through **Normative** role
- through **Implementation** on the ground
- and including Carbon, Other benefits and impacts and Governance

Scope of MRV/Monitoring for REDD



Don't Panic!

- Cost-effective methods are available
- Experience is around
- No need for detailed decisions now
- Give the process time
- Phased approach



Why?

Two distinct scales define the needs:

1. National -> International

- Compliance and Accounting
 - Reporting and Verification – GHG Inventories (and more..)
- Knowledge
 - Global assessments, Science, Negotiations, Feedback

2. National -> Local

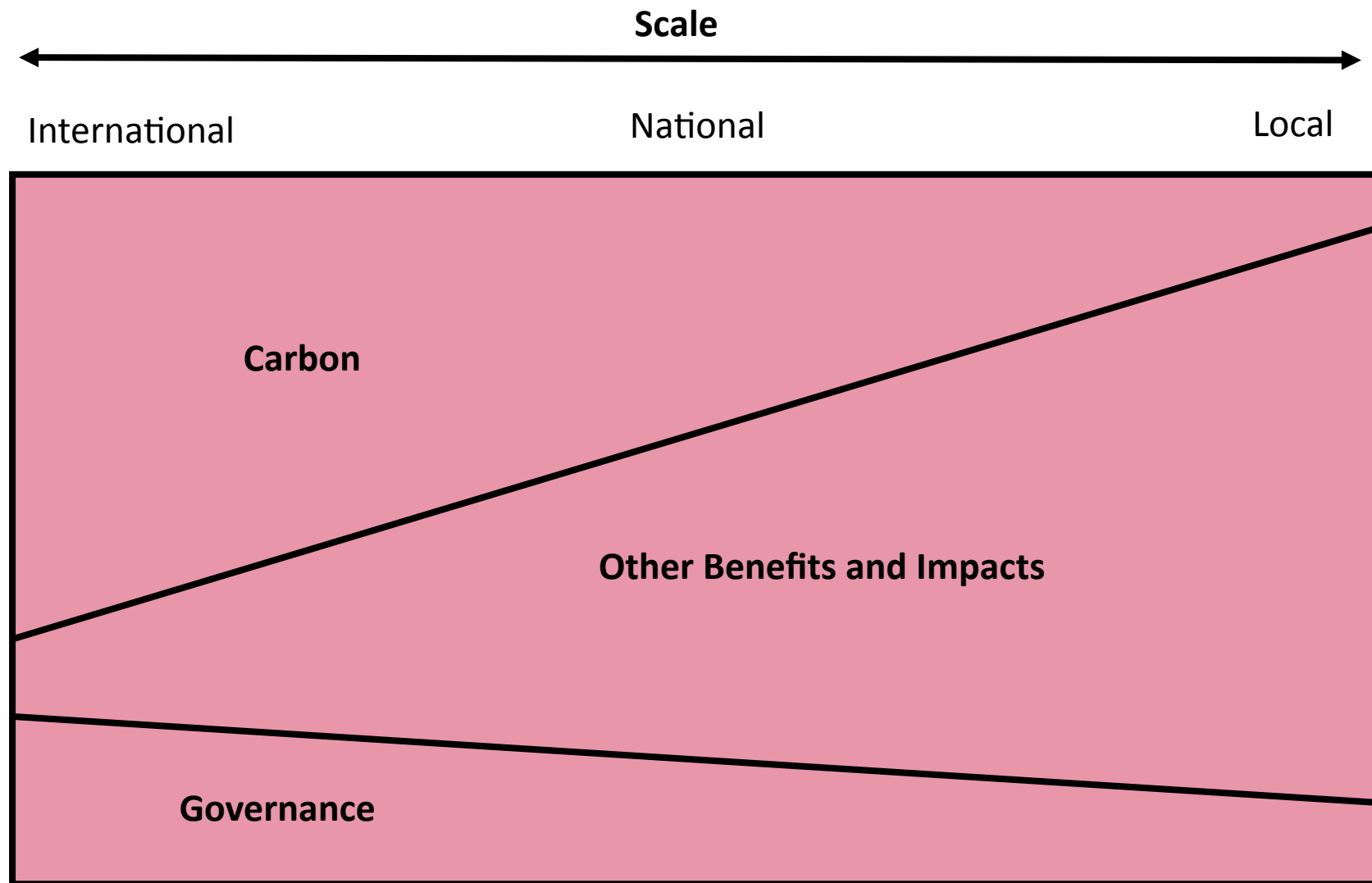
- Implementation policies
- Payments and accounting
- Knowledge and Feedback loops
- Synergies with other development objectives

What?

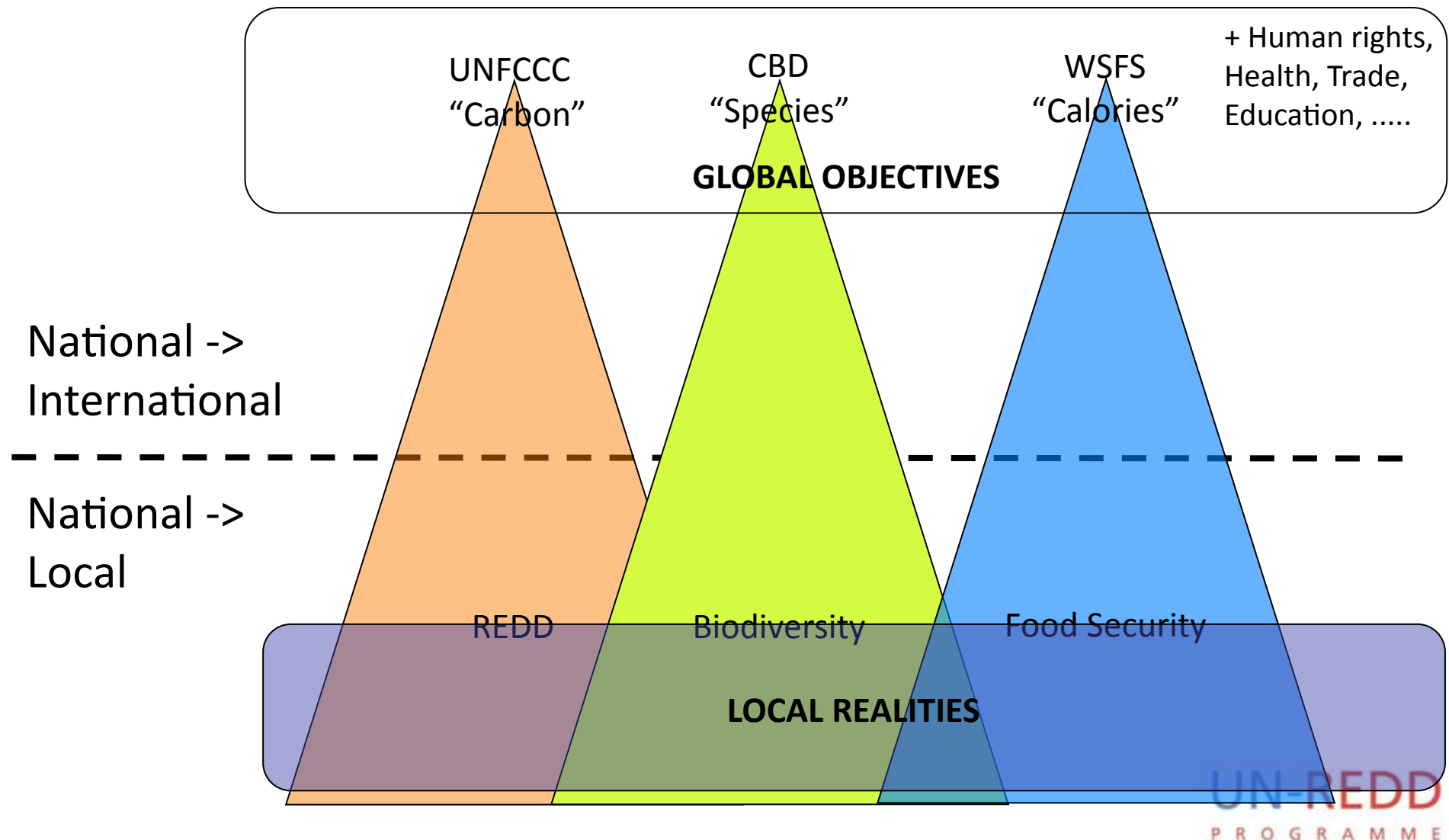
Three distinct categories:

1. Carbon stock and stock change
2. Other benefits & impacts
3. Governance aspects

Relative importance for REDD



REDD (or even CC) is not isolated



How?

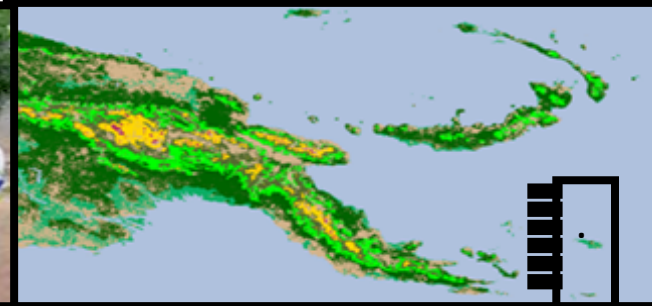
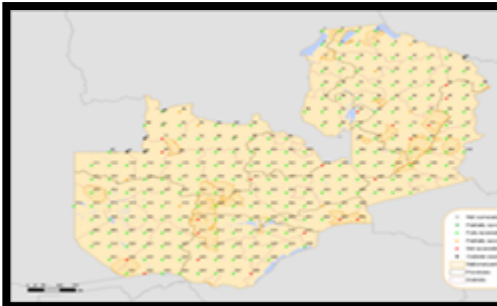
	Carbon	Other Benefits & Impacts	Governance
National -> International	National Forest Inventory Process		Dedicated Governance Monitoring
National -> Local			
	Local Monitoring Systems for Implementation		

National Forest Inventory Process

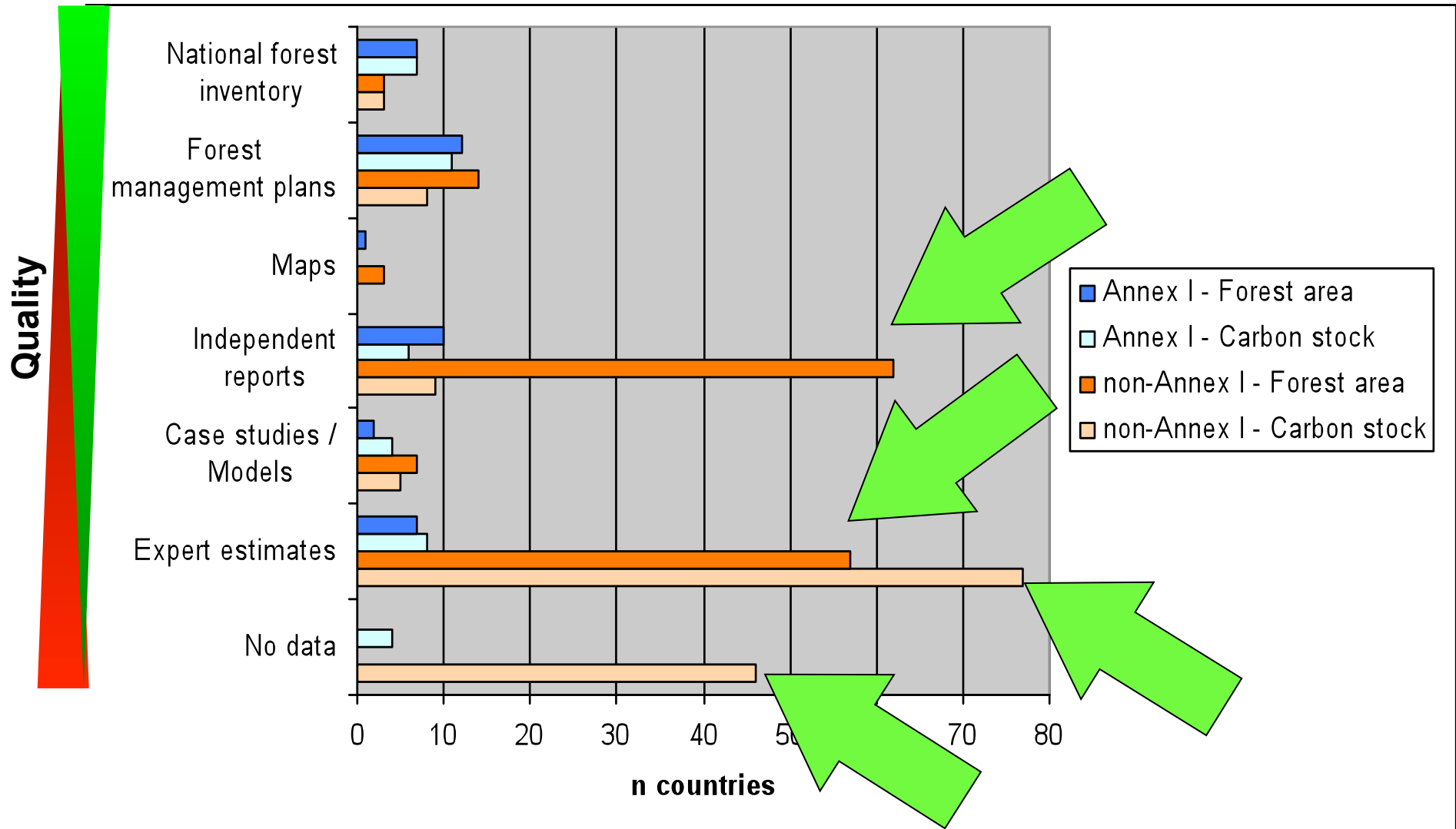
- Collect, manage, analyse and make available information
- On forests, their management, uses and users, benefits and impacts
 - i.e. ***Biophysical AND Socio-economic information***
- Covering the entire country
- Includes analysis, evaluations and scenarios for use in policy processes

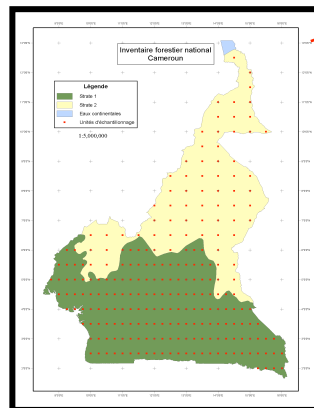
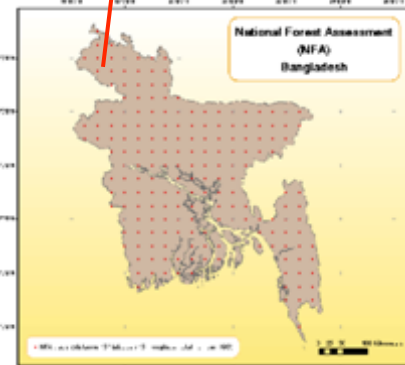
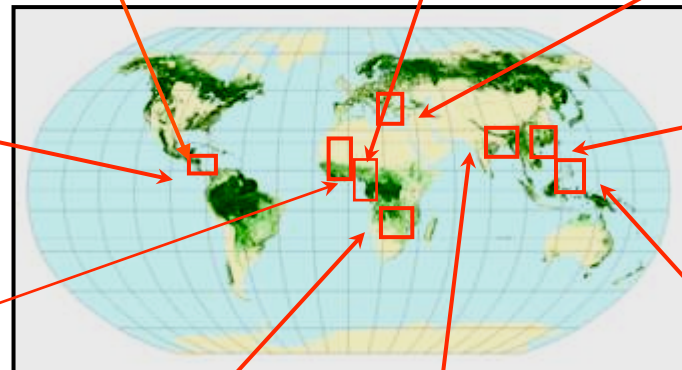
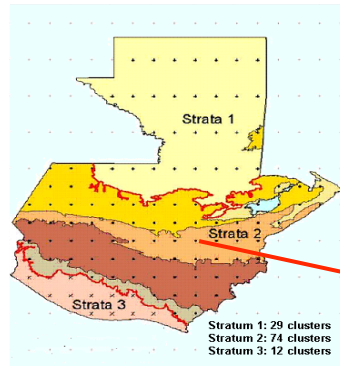
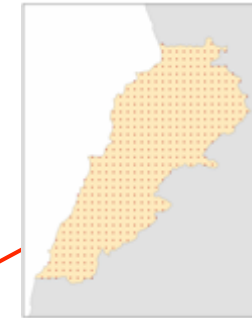
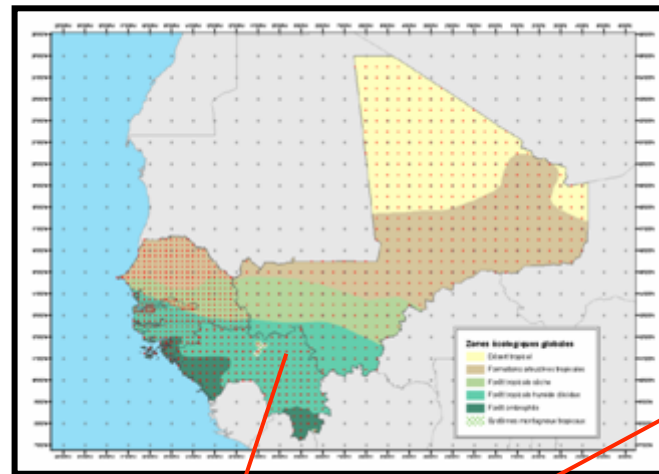
National Forest Inventory - methods

- Field data collection
 - Measure
 - Observe
 - Interview
- Models
 - Convert data into local estimates (eg Carbon stocks)
- Add up to larger scale
 - Sampling methods
 - Remote sensing

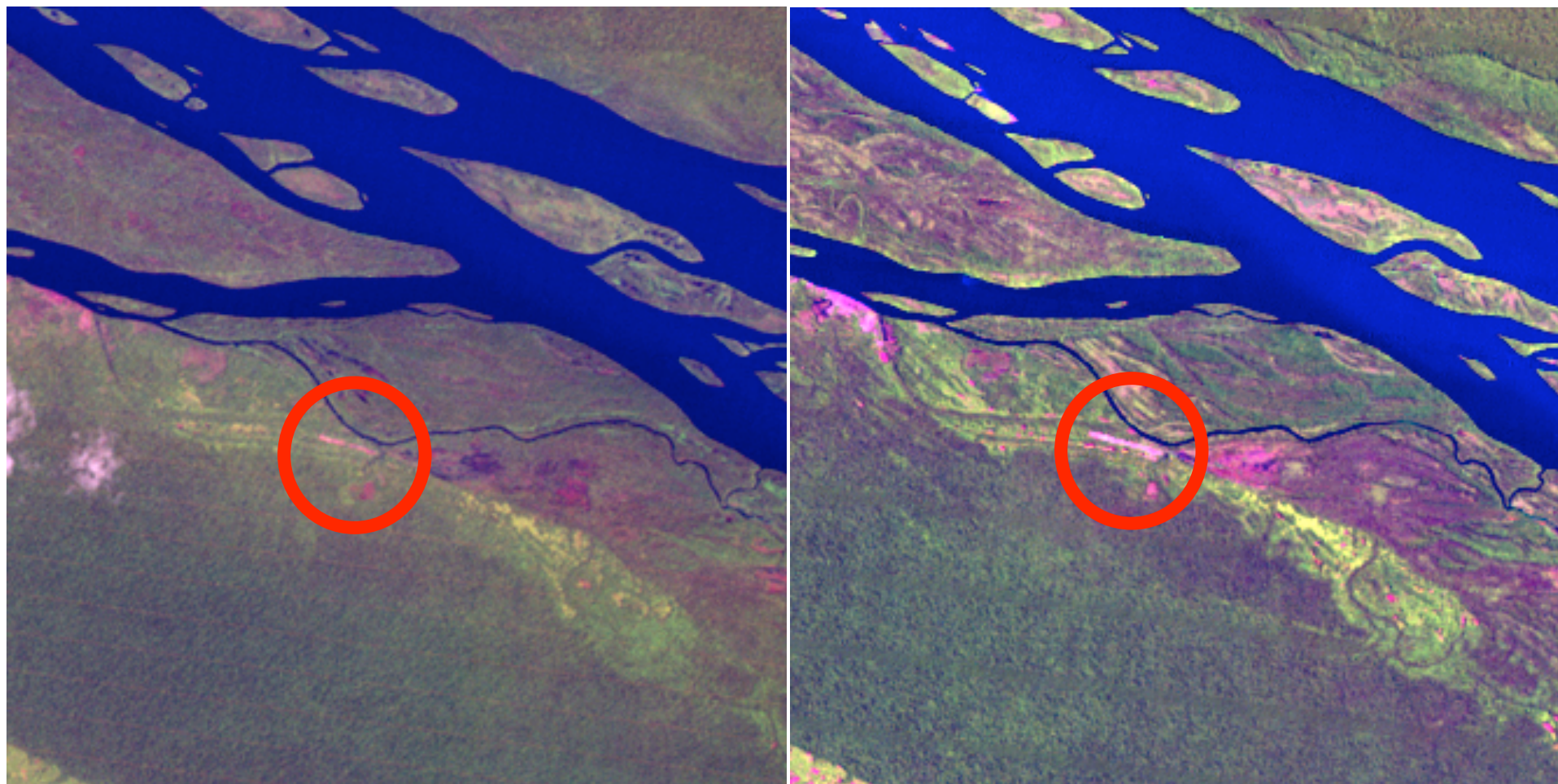


Data on trends in area and C stock



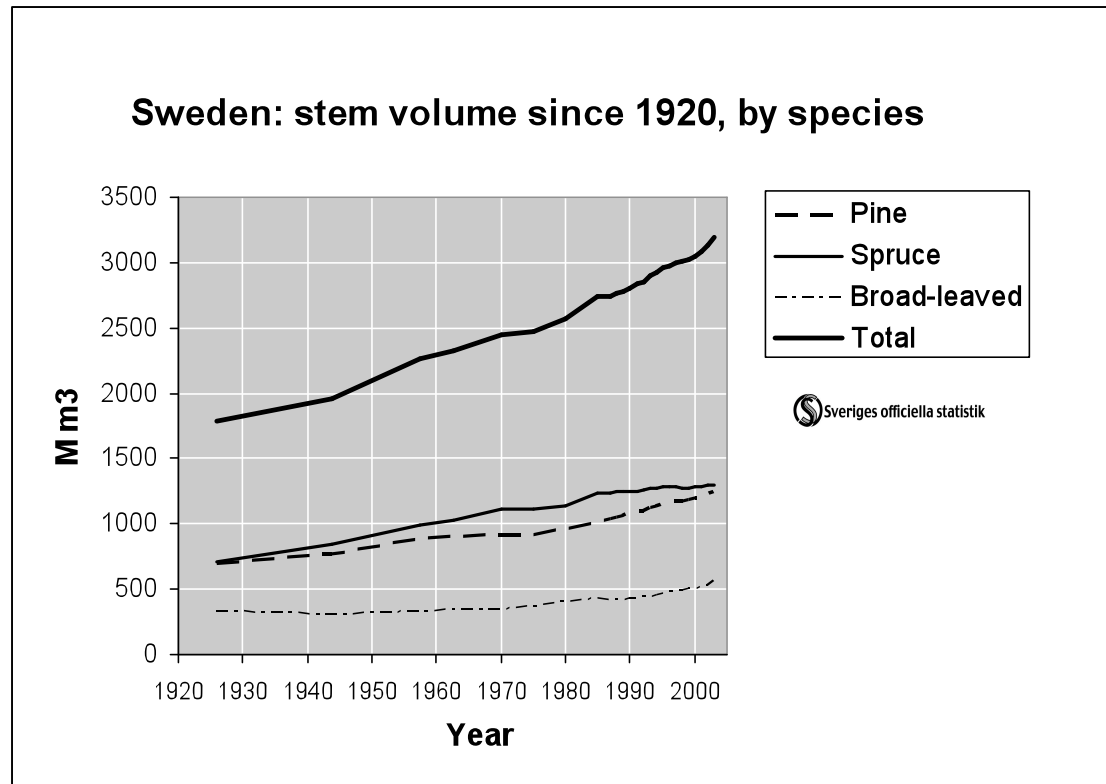


DRC 1990 - 2005



10 km

Long-term Institutional needs



Key Questions

1. Why?

- Policy frameworks

2. What?

- Specifications of Needs

3. How?

- Institutions, capacities
- Methods

4. How much?