

# Transatlantic Climate and Clean Energy Initiative

Climate change is a global problem and as such requires global solution strategies. International partnerships are therefore essential for advancing climate protection and the development of sustainable approaches to energy production.

Industrial countries bear particular responsibility for meeting these tremendous challenges. Not just because they account for the majority of carbon dioxide emissions, but also because they are the ones with the necessary funds and know-how.

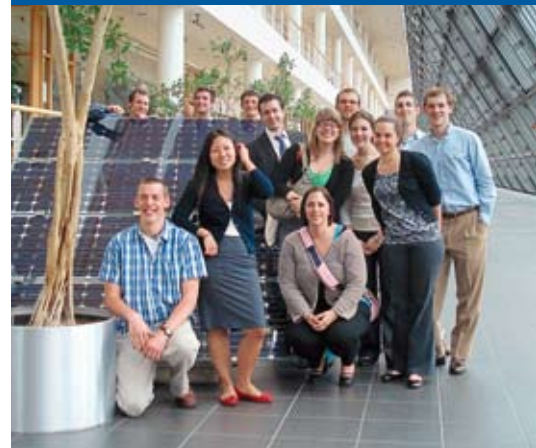
This is why InWEnt's Transatlantic Climate and Clean Energy Initiative (TCC) was created to facilitate cooperation between two economic and technological leaders in renewable energy (RE): Germany and the United States of America (USA). The TCC initiative's aim is to foster transatlantic dialogue on climate and energy issues among political, economic and educational elites; to initiate and support educational cooperation and networks through training and exchange programs; and to promote transatlantic business cooperation among small and medium-sized enterprises (SMEs) in the emerging clean energy industries.

By making use of InWEnt's broad capacity building know-how and its years of experience and expertise in transatlantic cooperation, the TCC Initiative aims to increase exchange by sharing people, ideas, concepts and values, helping to preserve our environment and natural resources.

## Transatlantic Dialogue on Climate Issues – Building Trust, Delivering Results

TCC study tours and conferences are aimed at decision makers, experts and knowledge multipliers in politics, business and education. They provide information about alternative climate and energy policies, renewable energy options and strategies, and facilitate networks and cooperation.

InWEnt organises study and fact-finding tours for US decision-makers and experts along with conferences about transatlantic cooperation on climate and energy issues. The sustainable impact of these dialogue initiatives has been clearly reflected in a number of ways: various US law initiatives on the subnational level; a grant initiative to build a wind turbine; cooperation between clean energy training institutions in Germany and the United States; and various German-American workshops on the educational and labour market effects of renewable energy industries, e.g. during WIREC 2008.



For many years, InWEnt has been committed to providing sustainable solutions for climate change and furthering renewable energy technology in industrial or developing nations and in emerging markets. Thousands of young professionals, experts and decision makers from Europe, the Americas, Asia and Africa have participated in our training programs and joined InWEnt's expert networks.



## Transatlantic Exchange – Investing in Future Competitiveness

InWEnt's Transatlantic Renewable Energy Exchange Fellowship Program (TREF), sponsored by the German government, is another essential element of the TCC Initiative. It allows future leaders such as graduates or young professionals from the US to develop a deep understanding of the clean energy industry in Germany. Hands-on practical experience promotes the exchange of ideas and expertise and creates new future-oriented projects and job opportunities.

The TREF provides career training and organises internships in the RE sector for participants. Seminars provide field related information as well as country-specific and intercultural orientation programmes. The TREF supports the RE industry in their efforts to train and recruit highly qualified future leaders with international working experience for international and transatlantic market activities. By offering TREF internships, SMEs have a chance to test and train promising future leaders – a worthwhile investment in their future transatlantic activities.

### The TCC Initiative's Central Objectives

- to further transatlantic dialogue on climate issues in politics, business and education
- to provide mutual understanding and know-how on climate and clean energy politics, structures, developments and strategies
- to build and extend transatlantic networks on renewable energy
- to provide expertise on transatlantic clean energy markets and support business cooperation especially among SMEs
- to provide practice-oriented career training in clean energy companies, associations and institutions

### InWEnt – Qualified to Shape the Future

InWEnt – Capacity Building International, Germany, is a non-profit organisation with worldwide operations dedicated to human resource development, advanced training, and dialogue. Our capacity building programmes are directed at experts and executives from politics, administration, the business community, and civil society. We are commissioned by the German federal government to assist with the implementation of the Millennium Development Goals of the United Nations. In addition, we provide the German business sector with support for public private partnership projects. Through exchange programmes, InWEnt also offers young people from Germany the opportunity to gain professional experience abroad.

#### InWEnt – Internationale Weiterbildung und Entwicklung gGmbH

Capacity Building International, Germany  
Friedrich-Ebert-Allee 40  
53113 Bonn, Germany  
Phone +49 228 4460-0  
Fax +49 228 4460-1766  
[www.inwent.org](http://www.inwent.org)

Division for America  
Hanns-Theodor Fuss  
Senior Project Manager  
Friedrich-Ebert-Allee 40  
53113 Bonn, Germany  
Phone +49 228 44 601-291  
Fax +49 228 44 601-222  
[theo.fuss@inwent.org](mailto:theo.fuss@inwent.org)



The Transatlantic Climate and Clean Energy Initiative is part of a global climate initiative started by InWEnt in 2006 together with international partners. It is our active contribution to finding sustainable solutions for the global climate and environmental challenges of today. The TCC initiative has gained support from public and private funding institutions in Germany and the US. InWEnt is very open to new partnerships for future TCC projects and willing to actively participate in other project initiatives of this kind.



December 2009 · 5.03-0007-2009  
Design: finedesign  
Photos: InWEnt gGmbH



# Capacity building for monitoring climate change in sub-Saharan Africa

The international climate policy agenda clearly emphasises that political action must be measurable, reportable and verifiable. This means that monitoring climate change and the assessment of climate change related vulnerability, impact, and adaptation depends heavily on sound statistical data and efficient statistical systems on both a national and regional level.

Africa is highly vulnerable to the various manifestations of climate change. Six situations are of particular importance:

- Water resources at risk, especially in internationally shared basins where there is a potential for conflict and a need for regional coordination in water management
- Food security at risk from declines in agricultural production and an uncertain climate
- Natural resource productivity at risk and biodiversity that might be irreversibly lost
- Vector- and water-borne diseases, especially in areas with an inadequate health infrastructure
- Coastal zones vulnerable to sea-level rise, particularly roads, bridges, buildings, and other infrastructure that are exposed to flooding and other extreme events
- Exacerbation of desertification by changes in rainfall and intensified land use.

## The challenges for climate change statistics

The InWent Center for Economic, Social and Environmental Statistics has developed programmes to support its partners in African countries in their efforts to:

- strengthen their human resource and institutional capacities regarding the statistics relevant to climate change
- conceptualise the process of generating statistical data especially with regard to the comprehensive linkage of social, environmental and economic information
- improve methodologies to ensure high data quality
- overcome problems with data quality and insufficient documentation of available data
- access scattered information in different institutions and overcome the limited accessibility of this information
- set-up integrated data management systems, where available information is properly stored
- communicate statistical information to decision-makers, relevant institutions and the public in accordance with international standards



An expert from Uganda presents a case study on statistical policy information in the field of climate change.



Blended-learning on the InWent Global Campus 21® including chat discussions on technical issues serve as an important learning, knowledge management and networking tool before and after the classroom training.

## The "Statistics and Climate Change in Africa" blended training course

Blended training courses are an integrated part of the programmes offered by the InWEnt Centre for Economic, Environmental and Social Statistics. These courses combine different learning environments and intensively use new information technologies and e-learning. InWEnt has offered the "Statistics and Climate Change in Africa" training course since 2008. This seminar is implemented in co-operation with UNFCCC and comprises a 7-week e-learning course organised on the "Global Campus 21 ([www.gc21.de](http://www.gc21.de))" virtual learning and communication platform and a two-week classroom session that includes exchanging best practises on climate change statistics, elaboration of case studies and hands-on training on advanced data compilation.

### The course addresses the following topics

- Statistical concepts for measuring climate change and its impact on the



vulnerability of African ecosystems, societies and economies

- Reporting requirements for climate change statistics
- Methodologies for climate change related data collection and data management
- Strategies for strengthening capacities and co-operation inside national statistical systems and between national and international statistical bodies

InWEnt participants visit the UNFCCC headquarters to discuss the challenges of monitoring climate change and according policies

## InWEnt – Qualified to Shape the Future

InWEnt – Capacity Building International, Germany, is a non-profit organisation with worldwide operations dedicated to human resource development, advanced training, and dialogue. Our capacity building programmes are directed at experts and executives from politics, administration, the business community, and civil society. We are commissioned by the German federal government to assist with the implementation of the Millennium Development Goals of the United Nations. In addition, we provide the German business sector with support for public private partnership projects. Through exchange programmes, InWEnt also offers young people from Germany the opportunity to gain professional experience abroad.



### InWEnt – Internationale Weiterbildung und Entwicklung gGmbH

Capacity Building International, Germany  
Friedrich-Ebert-Allee 40  
53113 Bonn, Germany  
Phone +49 228 4460-0  
Fax +49 228 4460-1766  
[www.inwent.org](http://www.inwent.org)

Division for Economic, Environmental and Social Statistics  
Dr Uwe Singer  
Senior Project Manager  
Friedrich-Ebert-Allee 40  
53113 Bonn, Germany  
Phone +49 228 4460-1538  
Fax +49 228 4460-1354  
[uwe.singer@inwent.org](mailto:uwe.singer@inwent.org)





# Coherence for a Sustainable Energy Policy in Central America, Mexico and Colombia

Decreasing their dependence on fossil fuels while using energy resources more efficiently and sustainably is of great importance to Latin American countries. However, the development of renewable energy projects and the promotion of energy efficiency still faces many obstacles that are related to the lack of coherence in public policies.

The InWent programme on Coherence for a Sustainable Energy Policy in Central America, Mexico and Colombia is designed to support these countries in developing and implementing more sustainable energy and climate policies. In cooperation with the INCAE Business School's Latin American Center for Competitiveness and Sustainable Development (CLACDS), promising professionals from the energy sector are trained and inter- and intrasectoral dialogue is promoted. The programme consists of the following components:

## International Leadership Training

The International Leadership Training (ILT) provides young professionals and junior executives from all sectors with a common vision and analytical tools to develop and implement coherent energy policies. The one-year training programme carried out in Germany focuses on developing the leadership skills of the participants and providing them with first-hand knowledge of the progress and advances in the sustainable energy sector in Germany. Participants are offered professional internships in German organisations and companies tailored to suit their professional interests.

## Sustainability Management Program

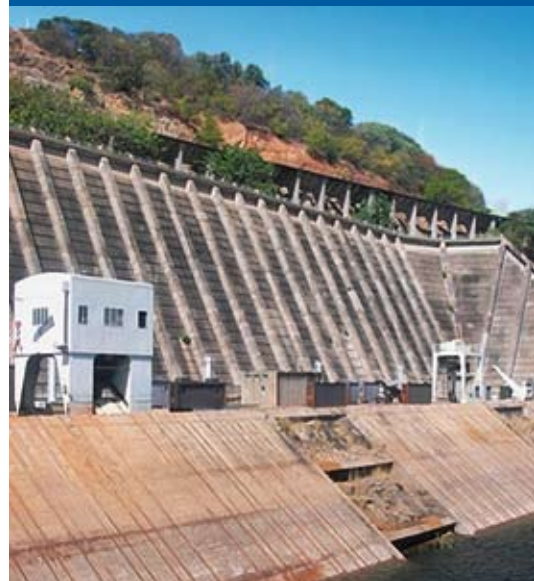
The Sustainability Management Program (SMP) includes a course on the INCAE campus in Costa Rica for representatives from government organisations, NGOs and private companies from the energy sector, who work together on a coherent vision for sustainable energy policies and the development of change projects in the participants' home countries. Scholarship recipients participate in the two-week SMP and stay for an additional week to focus on selected energy issues such as the challenges posed by climate change, the diversification of energy sources, energy efficiency and financing clean energy projects.

## The Leadership Seminar for Women in the Energy Sector

InWent and the INCAE's Center for Women's Leadership and Development also offer a short training programme designed to strengthen the leadership skills of women working in the energy sector. It is designed to contribute to the promotion of women into decision-making positions in the traditionally male-dominated energy organisations.



The programme is designed to train and support promising professionals of the region in developing and implementing more sustainable energy and climate policies by training and promoting inter- and intrasectoral dialogue.



## Ecobanking

The programme on Coherence for a Sustainable Energy Policy continues InWEnt's long-standing support of the Ecobanking project, an initiative developed by CLACDS-INCAE in collaboration with UNEP-FI to help organisations in the financial sector introduce environmental considerations to all areas of their work. Efforts include the promotion of green banking products to support environmentally friendly entrepreneurial activities such as renewable energy and energy efficiency projects. For more information please visit the website [www.ecobanking.com](http://www.ecobanking.com).

## Promoting dialogue

In addition to its training components, the programme is aimed at facilitating dialogue events in collaboration with regional institutions and local partners. The goal is to bring together representatives from different sectors to discuss and resolve fundamental issues for promoting the region's competitiveness and sustainability.

## InWEnt – Qualified to Shape the Future

InWEnt – Capacity Building International, Germany, is a non-profit organisation with worldwide operations dedicated to human resource development, advanced training, and dialogue. Our capacity building programmes are directed at experts and executives from politics, administration, the business community, and civil society. We are commissioned by the German federal government to assist with the implementation of the Millennium Development Goals of the United Nations. In addition, we provide the German business sector with support for public private partnership projects. Through exchange programmes, InWEnt also offers young people from Germany the opportunity to gain professional experience abroad.

### InWEnt – Internationale Weiterbildung und Entwicklung gGmbH

Capacity Building International, Germany  
Friedrich-Ebert-Allee 40  
53113 Bonn, Germany  
Phone +49 228 4460-0  
Fax +49 228 4460-1766  
[www.inwent.org](http://www.inwent.org)

In 2008, two regional discussion workshops on the impact of climate change on hydroelectric generation and on energy and corporate social responsibility were organised and brought together more than 30 representatives from relevant institutions and organisations from all sectors and all Central American countries.

The success and reputation of the trainings and dialogue events are due primarily to the partnerships InWEnt has built with other regional and international organisations in the fields of energy sustainability and climate change. These include the Central American Commission on Environment and Development (CCAD), the Central American Integration Secretariat's Energy Coordination Unit (UCE-SICA), the Latin American Energy Organisation (OLADE), the International Union for the Conservation of Nature, the Energy and Environment Partnership with Central America (EEP), and the Network of CSR Organisations in Central America (RED-CARSE).



## Cooperation

InWEnt implements this programme in close cooperation with the Latin American Center for Competitiveness and Development (CLACDS), which is INCAE's principal research organisation and serves as an action-based think tank for the region's governments, integration organisations, private sector and civil society.

Latin American Center for Competitiveness and Development (CLACDS)  
INCAE Business School  
La Garita, Alajuela, Costa Rica  
Phone (506) 2437 2200; Fax (506) 2433 9606  
[clacds@incae.edu](mailto:clacds@incae.edu); [www.incae.edu](http://www.incae.edu)



Division for Natural Resources and Biodiversity

Dr Erich Mies

Senior Project Manager

Lindenstr. 41

04519 Rackwitz (Zschortau), Germany

Phone +49 34202 845-400

Fax +49 34202 845-777

[erich.mies@inwent.org](mailto:erich.mies@inwent.org)





# Prospects for a Low Carbon Economy: Dialogue forums with anchor countries on limiting climate change

Combating global climate change while ensuring energy security is the greatest challenge facing international politics today. Due to their rapidly growing economies, the anchor countries are essential partners in any attempt to resolve global climate change issues. Parallel to international climate negotiations, joint strategies must be developed to reconcile economic development and ambitious climate protection measures.

The InWEnt dialogue forums with anchor countries on limiting climate change aim to facilitate exchange on specific national challenges along the path to a low carbon economy (LCE) and to develop joint strategies that help limit climate change. Dialogue partners include policymakers in ministries, public authorities, research institutes and non-governmental organisations. During the first year of the dialogue programme, participants from Brazil, China, India, Germany, Mexico, South Africa, Indonesia and Egypt identified key priorities in three focal areas: (1) sustainable energy supply in small and medium enterprises (SME); (2) urban energy consumption; and (3) land use, land use change and forest protection.

## 1st Dialogue Forum: Towards a low carbon economy Berlin, 26–28 April 2009

After a preparatory workshop in Berlin at the end of 2008, the 1st Dialogue Forum took place from April 26–28, 2009. About 50 participants representing all the countries involved in the project further improved the overall concept for the dialogue process. This ensured that partners' priorities were integrated into the process

and created a unified focus on the central requirements for a LCE. In three thematic breakout groups, participants discussed the main issues that the LCE dialogue series needed to address and decided to deepen these discussions in thematic regional workshops.

## Regional Dialogue Forum on Sustainable Energies for Small and Medium Enterprises (SMEs), in cooperation with the Energy and Resources Institute (TERI)

New Delhi, 19–21 October 2009

The 1st Regional Dialogue Forum took place in New Delhi and was organised jointly with the Energy and Resources Institute (TERI). The forum addressed the question of what policy-measures and frameworks are appropriate to push low-carbon technologies in SMEs. Participants also considered how capacity building approaches could be designed to ensure the success and sustainability of SME activities and expanded discussion on the opportunities and constraints for sustainable energies in SMEs in the participating countries, focusing on renewable energy and energy efficiency. They also singled out priorities for further work in this thematic area.



Experts from anchor countries share expertise, experiences, strategies and new ideas for low carbon economy governance. Dialogue partners include policymakers in ministries, public authorities, research institutes and non-governmental organisations.



**inWEnt**

Capacity Building International  
Germany

**Regional Dialogue Forum on Low Carbon City Concepts, in cooperation with the City of Cape Town, Cape Town, 10 – 12 November 2009**

The 2nd Regional Dialogue Forum in Cape Town was organised jointly with the City of Cape Town as a joint event for World Town Planning Day. Participants focused on the field of spatial planning, discussing the prospects of smart growth and low carbon infrastructure planning. They also discussed their initial experiences with low carbon city guidelines and a low carbon city benchmarking system.

**Outlook 2010**

In 2010, work in the three key areas of this dialogue series will continue and help identify country-specific priorities and needs and develop joint concepts and strategies on how to address them. At the end of 2010, the results of the dialogues in the three thematic areas will be brought together, allowing participants to share the outcome of each thematic strand and determine the key features of the concept of an LCE.

**InWEnt – Qualified to Shape the Future**

InWEnt – Capacity Building International, Germany, is a non-profit organisation with worldwide operations dedicated to human resource development, advanced training, and dialogue. Our capacity building programmes are directed at experts and executives from politics, administration, the business community, and civil society. We are commissioned by the German federal government to assist with the implementation of the Millennium Development Goals of the United Nations. In addition, we provide the German business sector with support for public private partnership projects. Through exchange programmes, InWEnt also offers young people from Germany the opportunity to gain professional experience abroad.

**InWEnt – Internationale Weiterbildung und Entwicklung gGmbH**

Capacity Building International, Germany  
Friedrich-Ebert-Allee 40  
53113 Bonn, Germany  
Phone +49 228 4460-0  
Fax +49 228 4460-1766  
[www.inwent.org](http://www.inwent.org)

**Regional Dialogue Forum: Land Use, Land Use Change and Forestry (LULUCF) and Forest Protection Manaus, 19 – 21 November 2009**

The 3rd Regional Dialogue Forum in Manaus pursued the idea of setting standards of good practice for land use governance, testing these based on the participants' experience of failure and success in reducing emissions from deforestation and degradation (REDD) and related land-use planning decisions. Participants identified common factors shaping land use among the participating countries that could limit competition between countries for funding and found common denominators for good governance in the land-use sector.



Due to their rapidly growing economies, the anchor countries are essential partners in developing joint strategies to reconcile economic development and ambitious climate protection measures.



Division for Environment, Energy and Water  
Klaus Knecht  
Senior Project Manager  
Lützowufer 6 – 9  
10785 Berlin, Germany  
Phone +49 30 25482-110  
Fax +49 30 25482-103  
[klaus.knecht@inwent.org](mailto:klaus.knecht@inwent.org)



# Making leadership work for climate policy

## The Climate Leadership Programme

This new and innovative capacity building programme aims at supporting high ranking decision-makers from key institutions in facing the unprecedented complexity of challenges in the fields of climate protection and adaptation to climate change. It addresses influential decision-makers from Indonesia, South Africa and Brazil, helping them shape responsible climate policy in their organisations while considering the interplay between climate and development issues.

Anthropogenic climate change is one of the most challenging and complex problems of our time. It will fundamentally alter the living conditions of billions of people and eventually change the way we go about our lives. The institutional environment in which many organisations are embedded, however, exerts strong pressure to conform to the prevailing logic of our time, often climate unfriendly. Broad coalitions that reflect the collective action of multiple parties are needed to bring about profound changes, such as the transition to a low-carbon economy. In today's complex environment, leaders from government and industry have to collaborate across traditional boundaries and need a deep understanding of leadership, one that involves taking action that is both socially and environmentally responsible. The Climate Leadership Programme (CLP) helps by bringing promising leaders from a wide range of sectors together to jointly develop the capabilities needed to promote innovation and organisational transformation in the context of climate change. Its objective is to initiate and support mutually beneficial and well-defined relationships formed by two

or more sectors of society with the intent of taking action on climate change and delivering results in a way that is more effective, efficient and sustainable than could be achieved by any one sector alone.

### Climate Leadership Potential

In order to develop such capabilities, the CLP applies a methodology inspired by Dr C. Otto Scharmer, a senior lecturer at the Massachusetts Institute of Technology (MIT). It is a management and leadership concept known as "presencing" ([www.theoryu.com](http://www.theoryu.com)) and lies at the heart of the CLP. This idea combines personal leadership development with innovative leadership and change management tools and new learning methodologies. It strives to enable competent social leaders to achieve a position where they enjoy their highest potential. This allows them to develop answers to new and complex problems and implement these in their organisations. These organisations in turn then create innovative, sustainable, and inclusive solutions, shifting from mere debate to actively co-creating the new.



Expert dialogues and discussion forums on climate change topics are enhanced with reflection methods, perception techniques, peer coaching, shadowing journeys, stakeholder dialogues and an exposure programme for the development of leadership capacities.



## CLP in a nutshell

The CLP consists of three consecutive programme cycles. Two countries participate in each individual cycle, which focuses on one particular climate change debate topic important to both countries. Participants for each cycle commit to attending 20 days of organised programme activities in an 11-month period. The CLP combines expert dialogues and discussion forums with reflection methods, perception techniques, peer coaching, shadowing journeys, stakeholder dialogues, an exposure programme and the development of prototypes. The programme thus pairs the 'presencing' approach with the most recent climate change findings from science and technology. It provides participants with a set of core skills they can use to achieve profound innovation and change.

## Cities and Climate Change

The 2010 programme cycle will focus on aspects of climate change in cities. It targets future top executives in South Africa and Indonesia from the public, private and civic sector willing to make a difference in their city. A select group of leaders will be offered the opportunity to co-create small but meaningful models that – if scaled up – would have a significant impact on the key underlying issues that determine climate change.

Participants will develop an in-depth understanding of the relevance of climate change for their city, sector and institution. Moreover, participants will have the chance to explore different aspects of climate change from the perspective of its diverse stakeholders. They will increase their awareness and leadership skills and build lasting networks across sectors and continents. In the last 5 months of the programme cycle, participants will develop prototypes to address different aspects of climate change relevant to their individual context. Prototypes are small initiatives with an error-tolerant design to optimise the learning-by-doing effect.

## InWEnt – Qualified to Shape the Future

InWEnt – Capacity Building International, Germany, is a non-profit organisation with worldwide operations dedicated to human resource development, advanced training, and dialogue. Our capacity building programmes are directed at experts and executives from politics, administration, the business community, and civil society. We are commissioned by the German federal government to assist with the implementation of the Millennium Development Goals of the United Nations. In addition, we provide the German business sector with support for public private partnership projects. Through exchange programmes, InWEnt also offers young people from Germany the opportunity to gain professional experience abroad.

### InWEnt – Internationale Weiterbildung und Entwicklung gGmbH

Capacity Building International, Germany  
Friedrich-Ebert-Allee 40  
53113 Bonn, Germany  
Phone +49 228 4460-0  
Fax +49 228 4460-1766  
[www.inwent.org](http://www.inwent.org)

Division for Environment, Energy and Water  
Johanna Bergmann  
Senior Project Manager  
Lützowufer 6 – 9  
10785 Berlin, Germany  
Phone +49 30 25482-109  
Fax +49 30 25482-103  
[johanna.bergmann@inwent.org](mailto:johanna.bergmann@inwent.org)



The CLP combines personal leadership development with the ever more pressing issue of climate change.



The development of prototypes is an integral part of the CLP. Prototypes are small initiatives to be quickly tried out in practice with an error-tolerant design, allowing for eventual redesigning. Small, intersectoral working groups will be formed for this purpose. The development of the prototypes will be coached by the programme.



December 2009 · 5.03.0007-2009  
Design: finedesign · Photos:  
InWEnt gGmbH/Ariel Biggs Javellana/  
Steffen Rother, istockphoto



# Building Adaptive Capacity

## Mainstreaming Adaptation Strategies to Climate Change in Managing African Transboundary River Basins

Climate change has become an issue of serious consequence. One central concern is what Africa can and must do to be able to adopt suitable adaptive measures in the water sector to cope with water scarcity, climate variability, rainfall uncertainty and increasing vulnerability due to global climate change. The impact of these events will directly affect the livelihoods of millions of people, their water supply, hydropower, irrigation, and many other areas. Fortunately, people are not helpless and our ability to adapt can be strengthened by drawing attention to the factors that determine adaptive capacity such as different types of social capital, institutions and governance arrangements.

### Linking adaptation to development

Adaptation means making systems healthier and more resilient, not just for today but over the long run. This can be accomplished by reducing the pressures that are already stressing the system, restoring natural floodplains or investing in projects that reduce the vulnerability of infrastructures and people. It also means investing in educating the public about environmentally friendly choices and options, or capacity building to promote “better planning” in integrated water resources management (IWRM).

### Mainstreaming adaptation mechanisms

The mainstreaming of adaptation mechanisms aims at ensuring that possible future climatic problems are always taken into consideration for all relevant policy changes.

InWEnt helps its African partners identify concrete solutions, such as international river and lake basin organisations.

As a key element of adapting to climate change, transboundary water management is crucial for political and socio-economic stability and economic growth. Institutions at all levels must develop capacities to cope with climate change. InWEnt organises – jointly with other international cooperation partners – a series of regional seminars to strengthen the capacity of decision makers, managers and planners.

The importance of such capacity building measures at all levels was emphasised at the 6th Petersburg Round Table on “Transboundary Water Management in Africa“, organised in 2007 by the German Government and its international partners: AMCOW, GEF, the World Bank and UN organisations.



Africa is highly vulnerable to the impacts of climate change and needs to ensure that adaptation measures are put in place. More intense and frequent storms, combined with increased run-off, are leading to more frequent flooding. At the same time, water scarcity is also intensified through disrupted rainfall patterns, increased evaporation loss and increased water demand in all sectors. Climate change is threatening water security.



## The InWEnt "River Basin Dialogue" programme

The "River Basin Dialogue" (RBD) programme cooperates with the Water Division of the Southern African Development Community (SADC), various regional programmes and specialist networks on developing the capacity for integrated resources management and to adapt mechanism to cope with impacts caused by climate change in African river basins.

The key elements of the programme include:

- (1) Regional seminars to share experience and best practices
- (2) Development of strategies to mainstream climate change adaptation in the water sector
- (3) Awareness workshops for parliamentarians and policy-makers as well as training seminars for senior managers and practitioners
- (4) Support for regional networks

InWEnt also assists the SADC Water Division in developing the "Climate Change Adaptation Strategy for the Water Sector" programme which will feed into the "Regional Climate Change Adaptation" initiative. Regional position statements will also be developed to ensure that the SADC is heard internationally on issues relating to water and climate change adaptation. Eight areas for strategic action are currently under consideration:

- Knowledge generation, access and management
- Methodologies and tools for supporting CCA
- Institutional capacity building
- Information sharing, outreach and communication
- Strengthening partnerships and networks
- Policy development, dialogue and advocacy
- Pilot, demonstration cases and best practices
- Water infrastructure development (from planning to operation).

## InWEnt – Qualified to Shape the Future

InWEnt – Capacity Building International, Germany, is a non-profit organisation with worldwide operations dedicated to human resource development, advanced training, and dialogue. Our capacity building programmes are directed at experts and executives from politics, administration, the business community, and civil society. We are commissioned by the German federal government to assist with the implementation of the Millennium Development Goals of the United Nations. In addition, we provide the German business sector with support for public private partnership projects. Through exchange programmes, InWEnt also offers young people from Germany the opportunity to gain professional experience abroad.

### InWEnt – Internationale Weiterbildung und Entwicklung gGmbH

Capacity Building International, Germany  
Friedrich-Ebert-Allee 40  
53113 Bonn, Germany  
Phone +49 228 4460-0  
Fax +49 228 4460-1766  
[www.inwent.org](http://www.inwent.org)

Division for Natural Resources and Biodiversity  
Dr Thomas Petermann  
Senior Project Manager  
Lindenstr. 41  
04519 Rackwitz (Zschortau)  
Phone +49 34202 845-202  
Fax +49 34202 845-777  
[thomas.petermann@inwent.org](mailto:thomas.petermann@inwent.org)



[www.gc21.inwent.org/nrm-net/](http://www.gc21.inwent.org/nrm-net/) go to:  
>Topics< and >Climate Change Adaptation<

