



Migration & Displacement: The Human Face of Climate Change

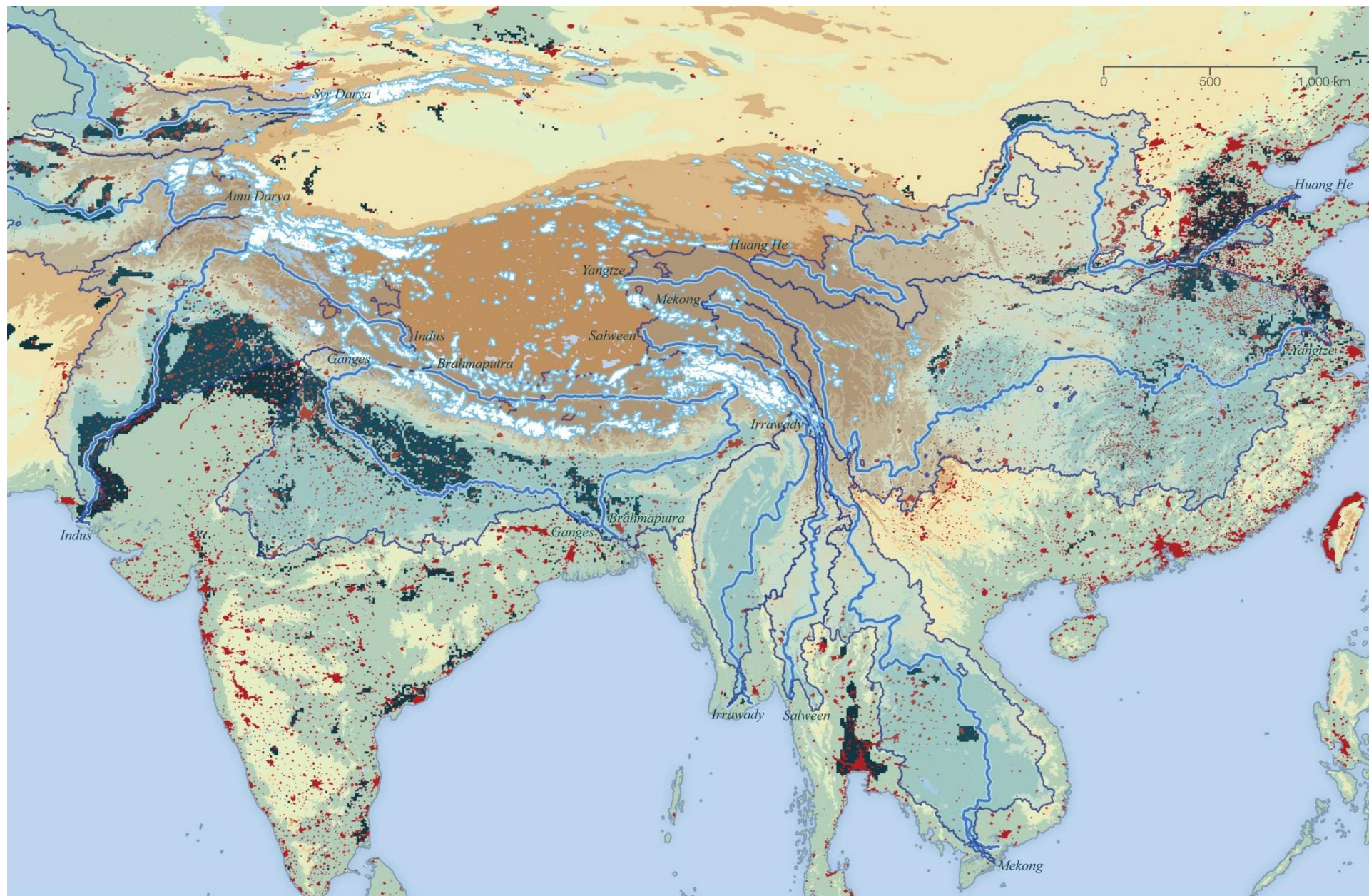
Dr. Koko Warner

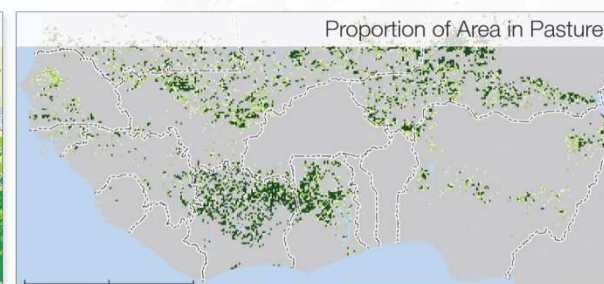
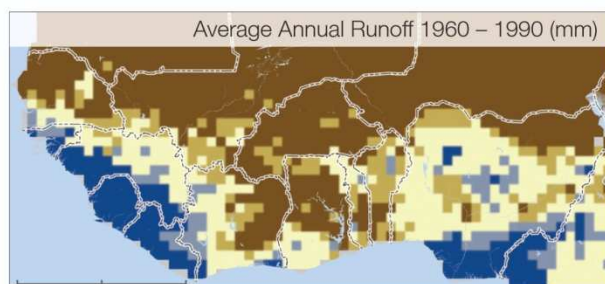
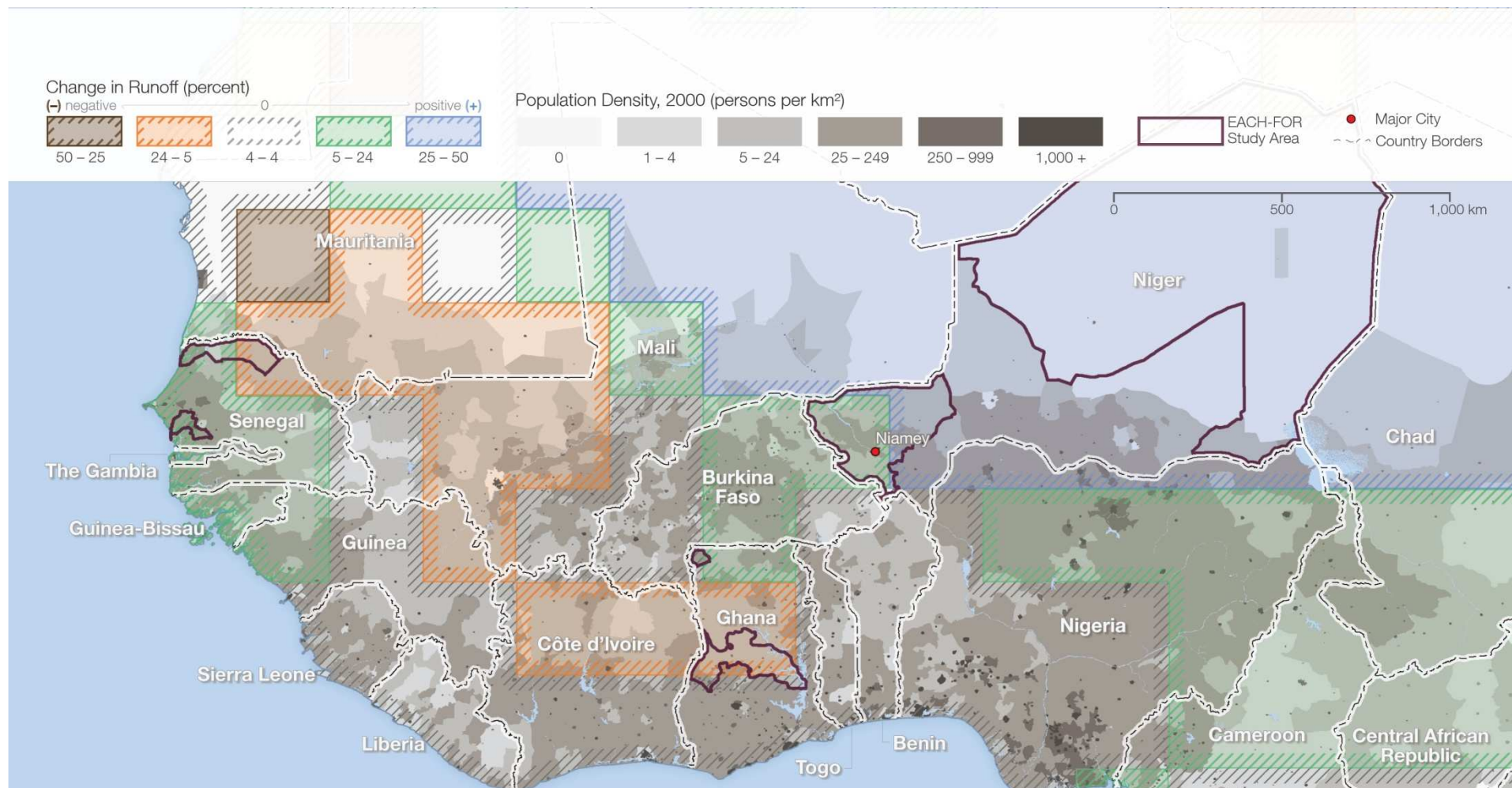
United Nations University
Institute for Environment and Human Security (UNU-EHS)
Bonn, Germany

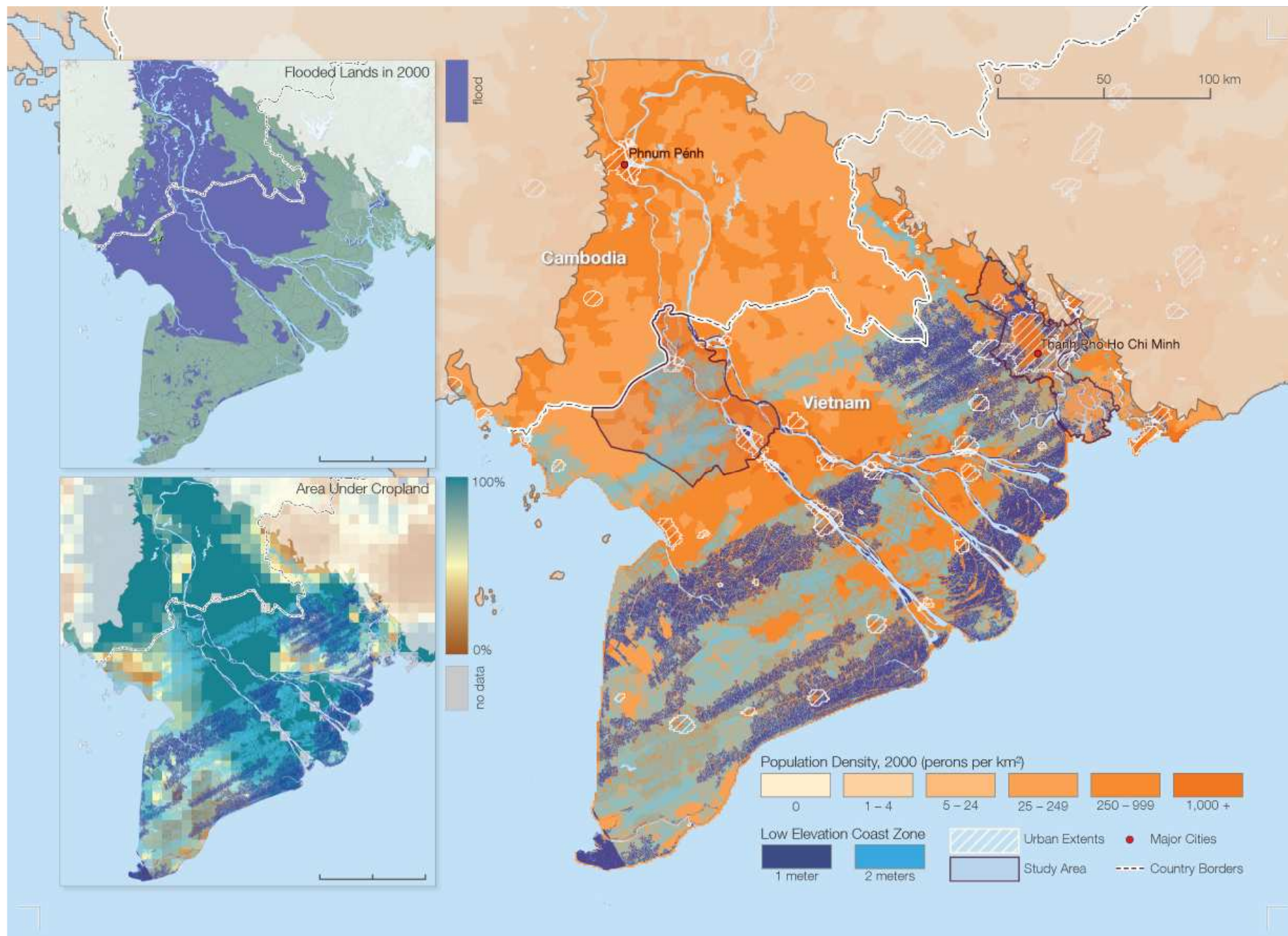


Climate change & migration

- **What will climate change mean for migration?**
 - “In coming decades, climate change will motivate or force millions of people to leave their homes in search of viable livelihoods and safety. Although the precise number of migrants and displaced people may elude science for some time, all available estimates suggest their numbers will be in the tens of millions or more. The mass of people on the move will likely be staggering and surpass any historical antecedent”.
- **Do we know what we need to know?**
 - Given the potential of climate change and other forms of environmental change to profoundly affect human mobility, we know surprisingly little about how these factors interact.
 - A noted scholar suggested recently that despite widespread anecdotal evidence, generalised assumptions and emerging research findings, we still have little empirically grounded knowledge or conceptual understanding of the links between the environmental impacts of climate change and population mobility
- European Commission Project „Environmental Change and Forced Migration Scenarios“
 - 23 empirical field studies, www.each-for.eu









Migration & Displacement at COP15

- **The impacts of climate change are already causing migration and displacement.**
 - Climate change is increasing the frequency and intensity of sudden and slow-onset disasters. Although the exact number of people that will be on the move by mid-century is uncertain, the scope and scale could vastly exceed anything that has occurred before. People in the least developed countries and island states will be affected first and worst.
- **Most migration and displacement related to climate change pressures will be internal.** Movements, both internal and transboundary, can partially be prevented by timely and adequate adaptation.
- **Migration and displacement, both internal and transboundary, needs to be part urgent adaptation actions in the Copenhagen Agreement.**
 - Investing in policy dialogue and development in the short term (i.e. under urgent adaptation actions) will help avoid unnecessary migration and displacement in the future.
 - Particularly because other factors beyond climate change play a role in migration and displacement (higher complexity), more timely intervention in the near-term can help identify modalities of interstate cooperation and foster resilience and adaptation. Timely action will help reduce the potential for destabilizing migration and displacement in the medium and longer-term.

Download the report at: <http://www.ehs.unu.edu/file.php?id=621>



In the current negotiating text...

Amend Paragraph 13 from non-paper 41

13. All Parties [shall][should] jointly undertake action under the Convention to enhance adaptation at the international level, including through

.....

(b) Activities related to internal and cross-border migration and displacement or planned relocation of persons affected by climate change, while acknowledging the need to identify enhancing and identifying modalities of interstate cooperation to respond to the needs of affected populations who either cross an international frontier as a result of, or find themselves abroad and are unable to return owing to, the effects of climate change.



What happens to a dream deferred?

*Does it dry up
like a raisin in the sun?*

*Or fester like a sore--
And then run?*

*Does it stink like rotten meat?
Or crust and sugar over--
like a syrupy sweet?*

*Maybe it just sags
like a heavy load.*

Or does it explode?





Thank you.

**UNU and our partners will report
back to the climate negotiations in
Copenhagen next week.**

Dr. Koko Warner
United Nations University Institute of Environment and
Human Security (UNU-EHS)
UN Campus, Hermann-Ehlerstr. 10
53113 Bonn, Germany
Tel: +49 228 815 0226, Fax: +49 228 815 0299