

Financing Rwanda's NDC implementation plan

Side Event: National mitigation policies as pillars of NDC implementation – how to mobilize financing

FAUSTIN MUNYAZIKWIYE

Rwanda Environment Management Authority

World Conference Center, Bonn

May 09, 2018

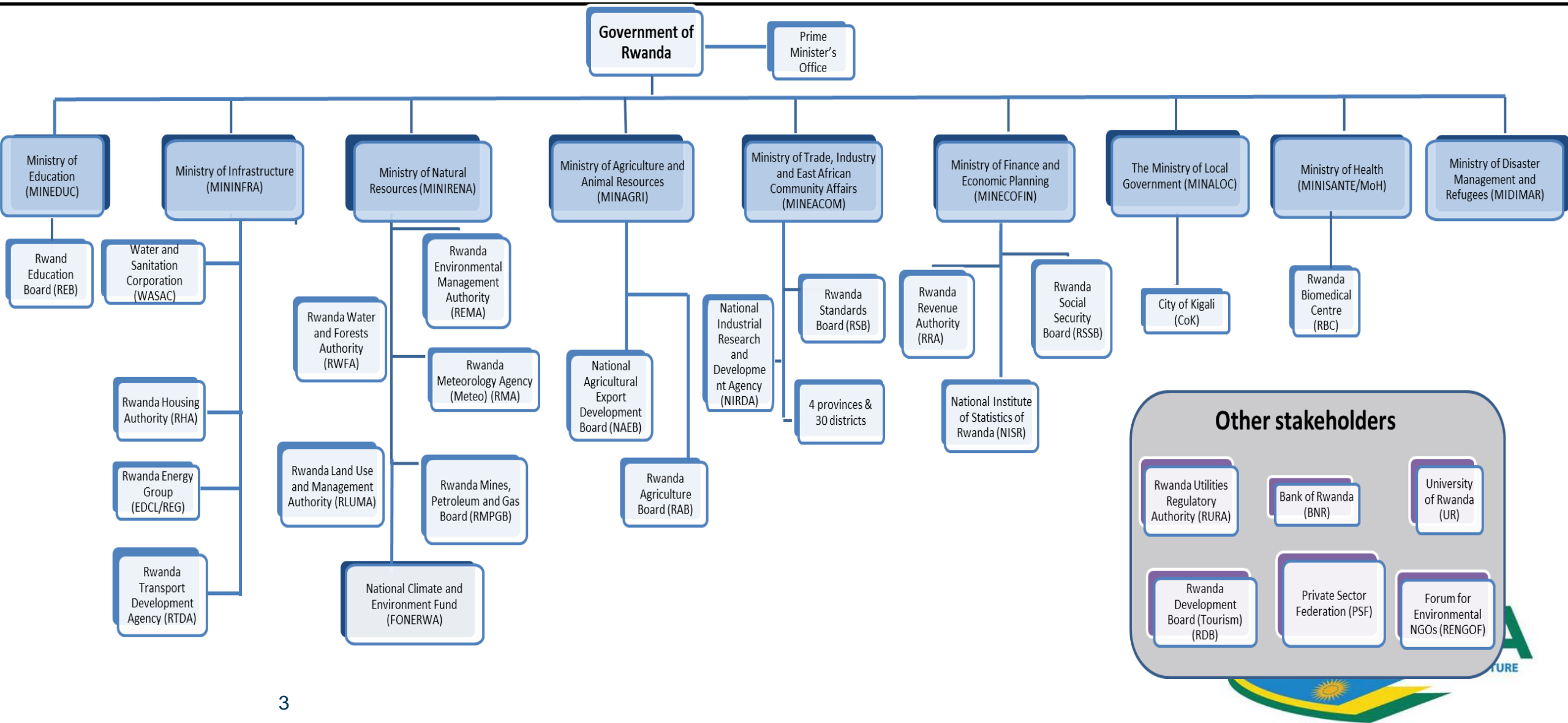


Rwanda's Nationally Determined Contribution

- Based on 2011 National Strategy for Climate Change and Low Carbon Development
- Adaptation and mitigation components with comprehensive list of measures, mostly taken from 2011 strategy
- Mitigation component is framed by Rwanda's adaptation vision
 - Food security
 - Increased resilience of Rwanda's population
- Emissions shall deviate from the business-as-usual scenario by 2030 but no quantitative target has been set
- Conditional on the provision of international support for finance, technology and capacity building.



Key stakeholders for NDC implementation

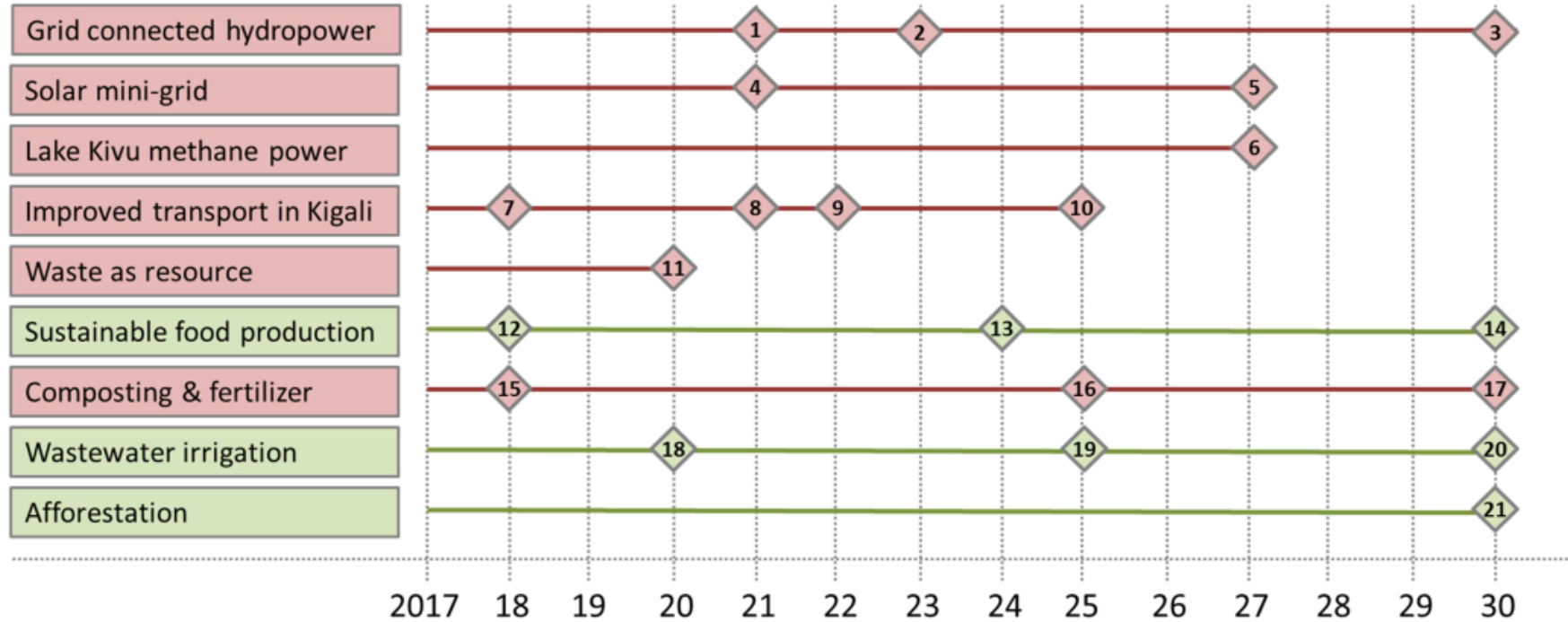


Prioritization of measures in NDC implementation plan

- Energy production
 - Lake Kivu gas
 - Grid hydro
 - Grid PV
 - Off-grid / mini-grid PV
 - Renewable biomass (charcoal/biogas)
- Energy efficiency end users
 - DSM (lighting, cooking)
- Transport
 - Public transport
 - Improved transport infrastructure
 - Vehicle standards
 - Transport planning
- Industry
 - Eco-industrial park
 - Energy efficient agro-processing
 - Climate Compatible Mining
- Waste management
 - Waste as resource
 - Wastewater management
- Agriculture
 - Sustainable food production
 - Composting and fertilizer enrichment
 - Irrigation (incl. wastewater)
 - Soil conservation
 - Pest management
- Forestry
 - Afforestation
 - Reforestation
 - Improved forest management
- Cross-cutting
 - Early warning, community-based DRR
 - Integrated land use planning
 - Integrated Water Resource Management
 - Vector-based disease prevention

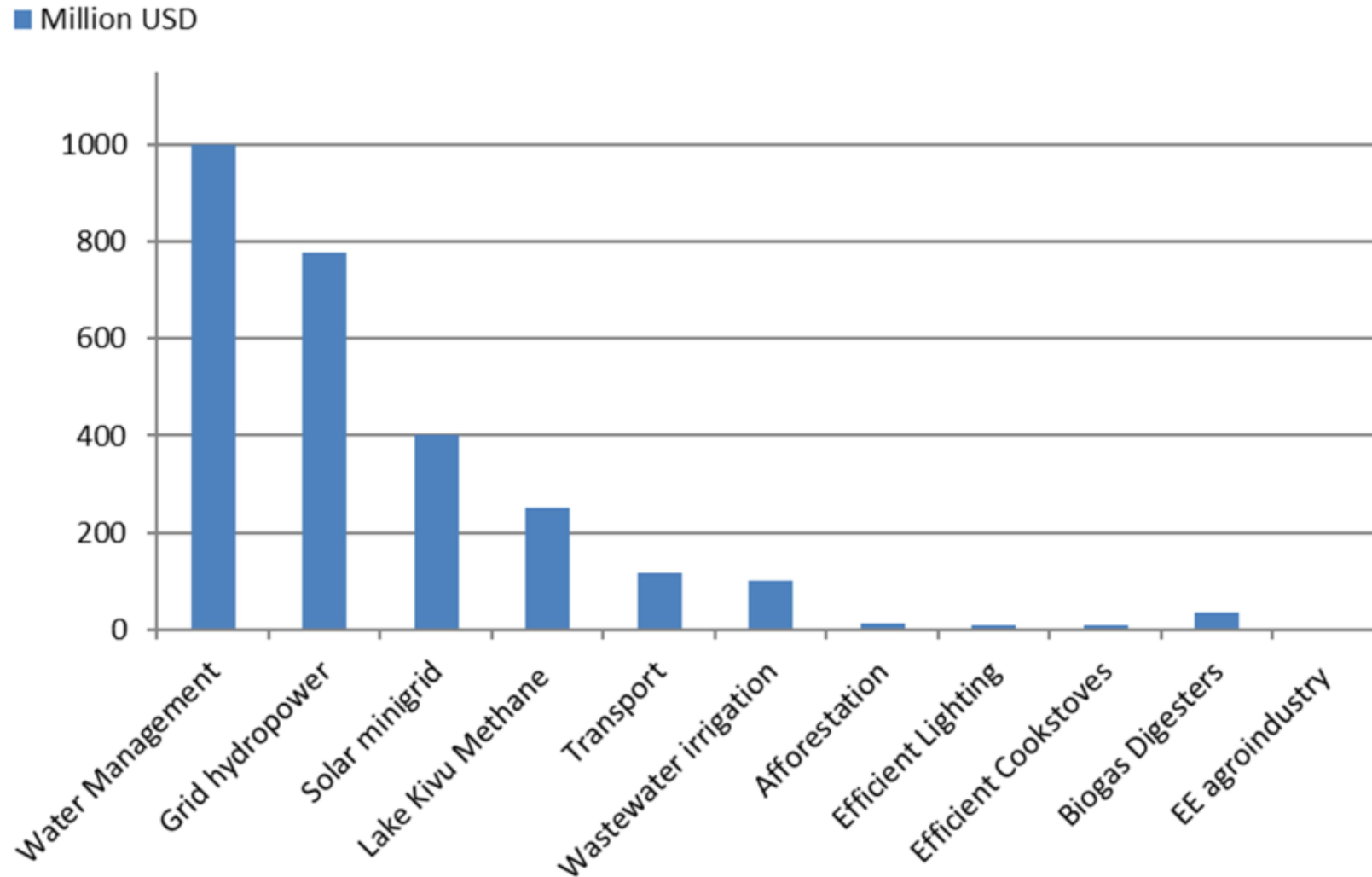


Timelines for implementation of NDC measures, dependent on availability of finance

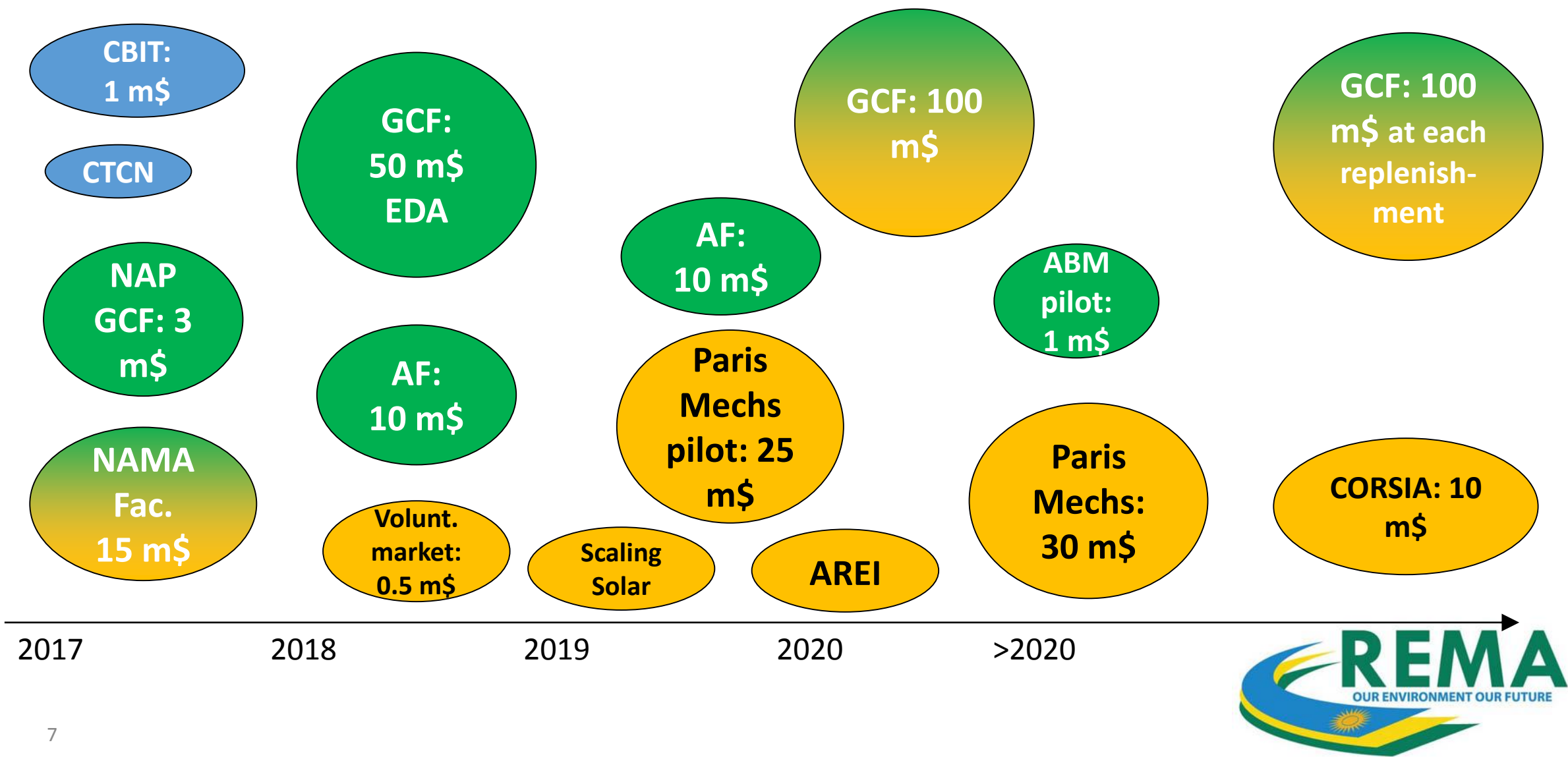


- | | | |
|--|---|-----------------------------------|
| 1 Enabling activities completed | 11 Controlled landfills and LFG use operational | 21 30% of land covered by forests |
| 2 Construction of large plants started | 12 Developing agroforestry strategy | |
| 3 Small plants operational | 13 80% households implement agroforestry | |
| 4 Mapping of sites & definition of policy tool | 14 100% households implement agroforestry | |
| 5 All mini-grid installed | 15 Composting station in Kigali established | |
| 6 Expansion to 50MW by 2028 | 16 80% households use enriched fertilizer | |
| 7 Study on BRT NAMA completed | 17 100% households use enriched fertilizer | |
| 8 Definition of new emission standards | 18 Wastewater irrigation operational | |
| 9 BRT NAMA starts implementation | 19 50% of potential areas use WW irrigation | |
| 10 Full implementation of emission standard | 20 100% of potential areas use WW irrigation | |

Implementation costs of selected NDC measures



Preliminary financing strategy : adaptation, mitigation, TA



Issues derived from developing NDC implementation plan



REPUBLIC OF RWANDA

Rwanda's Nationally
Determined Contribution (NDC)
and its implementation plan

July 2017

- More specific development of agency-level plans
 - Detailed costing on the basis of robust, nationally appropriate estimates
- Coordinating access to funding from domestic and international sources is difficult
- Timelines beyond 2023 are difficult to establish
- Build on existing and upcoming “lighthouse” activities
 - FONERWA project pipeline
 - CDM projects and PoAs
 - NAMAs, as far as they have been sufficiently elaborated
 - GCF pipeline (ex: wastewater treatment plant for Kigali)
 - Single large projects with international financing

