



Tackling Global Deforestation

Insights from REDD+ MRV process

Deforestation and forest degradation contribute significantly to global greenhouse gas emissions.

Since 2005, the UNFCCC has provided guidance on the implementation of mitigation actions in the forest sector in developing countries to address such emissions and removals from five activities.

Countries have made 38 FREL/FRL submissions with 31 being national in coverage.



DEFORESTATION:
36 SUBMISSIONS



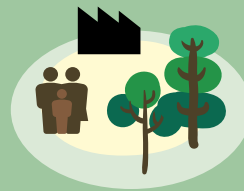
FOREST DEGRADATION:
13 SUBMISSIONS

Paris Agreement

The importance of forest and REDD+ is highlighted in Article 5 of the Paris Agreement. 73 developing countries have identified forest and land use (including 41 developing countries identifying REDD+) as a key mitigation element in their nationally determined contribution submitted under the Paris Agreement.



**CONSERVATION OF
FOREST CARBON STOCKS:**
3 SUBMISSIONS



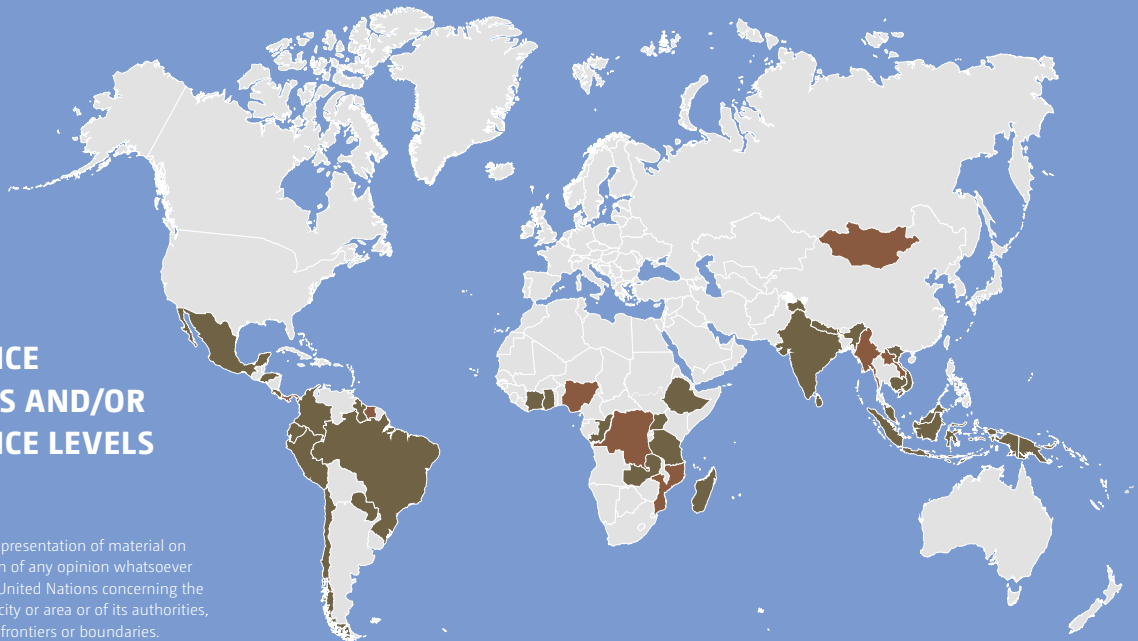
**SUSTAINABLE
MANAGEMENT OF FORESTS:**
4 SUBMISSIONS



**ENHANCEMENT OF
FOREST CARBON STOCKS:**
14 SUBMISSIONS

FOREST REFERENCE EMISSION LEVELS AND/OR FOREST REFERENCE LEVELS

The designations employed and the presentation of material on this map do not imply the expression of any opinion whatsoever on the part of the Secretariat of the United Nations concerning the legal status of any country, territory, city or area or of its authorities, or concerning the delimitation of its frontiers or boundaries.



The forest reference emission level and/or forest reference level (FREL/FRL) expressed in tonnes carbon dioxide equivalent per year is a benchmark to assess each country's performance in implementing REDD+ activities.

Completed reports from the following countries by October 2018: Brazil, Cambodia, Chile, Colombia, Costa Rica, Côte d'Ivoire, Ecuador, Ethiopia, Ghana, Guyana, Honduras, India, Indonesia, Madagascar, Malaysia, Mexico, Nepal, Papua New Guinea, Paraguay, Peru, Republic of Congo, Sri Lanka, Tanzania, Uganda, Viet Nam and Zambia.

Reports are being prepared for the following countries: Brazil, Democratic Republic of Congo, Laos, Madagascar, Malaysia, Mongolia, Mozambique, Myanmar, Nigeria, Panama and Suriname.

STEPS OF REDD+ MRV PROCESS

SUBMISSION OF FREL/FRL

TECHNICAL ASSESSMENT OF FREL/FRL

SUBMISSION OF RESULTS AS A TECHNICAL ANNEX TO A BUR

TECHNICAL ANALYSIS OF RESULTS

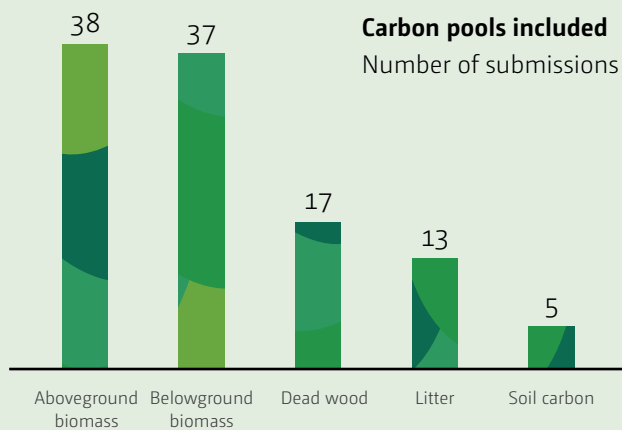
The technical assessment of proposed FRELs/FRLs is a process for facilitative, non-intrusive, technical exchanges of information between the submitting country and Land Use, Land Use Change and Forestry (LULUCF) experts. These technical exchanges allow the experts to assess the degree to which the information provided is in accordance with agreed UNFCCC guidance on the matter. The process also supports the national capacity of developing countries for the construction of FRELs/FRLs and for making future improvements.

VERIFIED REDD+ RESULTS

Developing countries seeking to obtain and receive payments for results-based actions should provide data and information used for the estimation of anthropogenic forest-related emissions by sources and removals by sinks in a technical annex to the biennial update report (BUR).

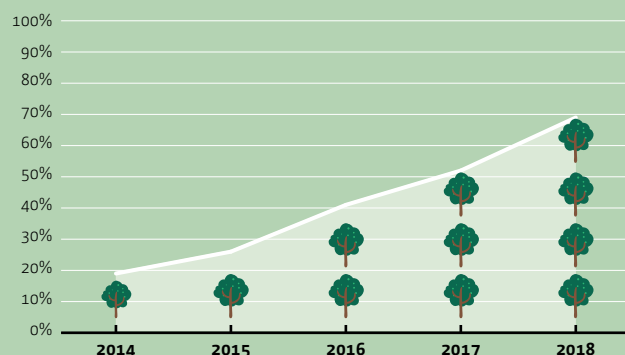
Five technical annexes have been submitted with the biennial update reports and have undergone a technical analysis by two LULUCF experts. This includes results amounting to 6280.96 MtCO₂eq (6183.49 MtCO₂eq emission reductions and 97.47 MtCO₂eq removals).

The Lima REDD+ information hub on the REDD+ web platform provides information on the results of REDD+ activities and corresponding results-based payments. The aim of the information hub is to increase transparency of information on results-based actions and results-based payments.



The forest area covered by FREL/FRL submissions has steadily increased since 2014 and is now close to 70 per cent of the total forest area in developing countries.

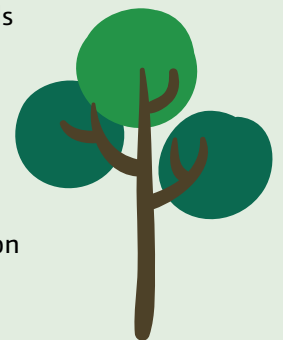
Percentage of total forest area in developing countries covered by a FREL/FRL submission



The forest area shown is based on the country-specific forest definitions used in the submissions.

SUBMISSION OF OTHER ELEMENTS ON REDD+ IMPLEMENTATION TO THE REDD+ WEB PLATFORM

- National strategy or action plan
- National forest monitoring system
- Summary of information on how the safeguards have been addressed and respected
- Sharing of information and experiences on REDD+ implementation



Visit the REDD+ web platform (<https://redd.unfccc.int/>) for more information.