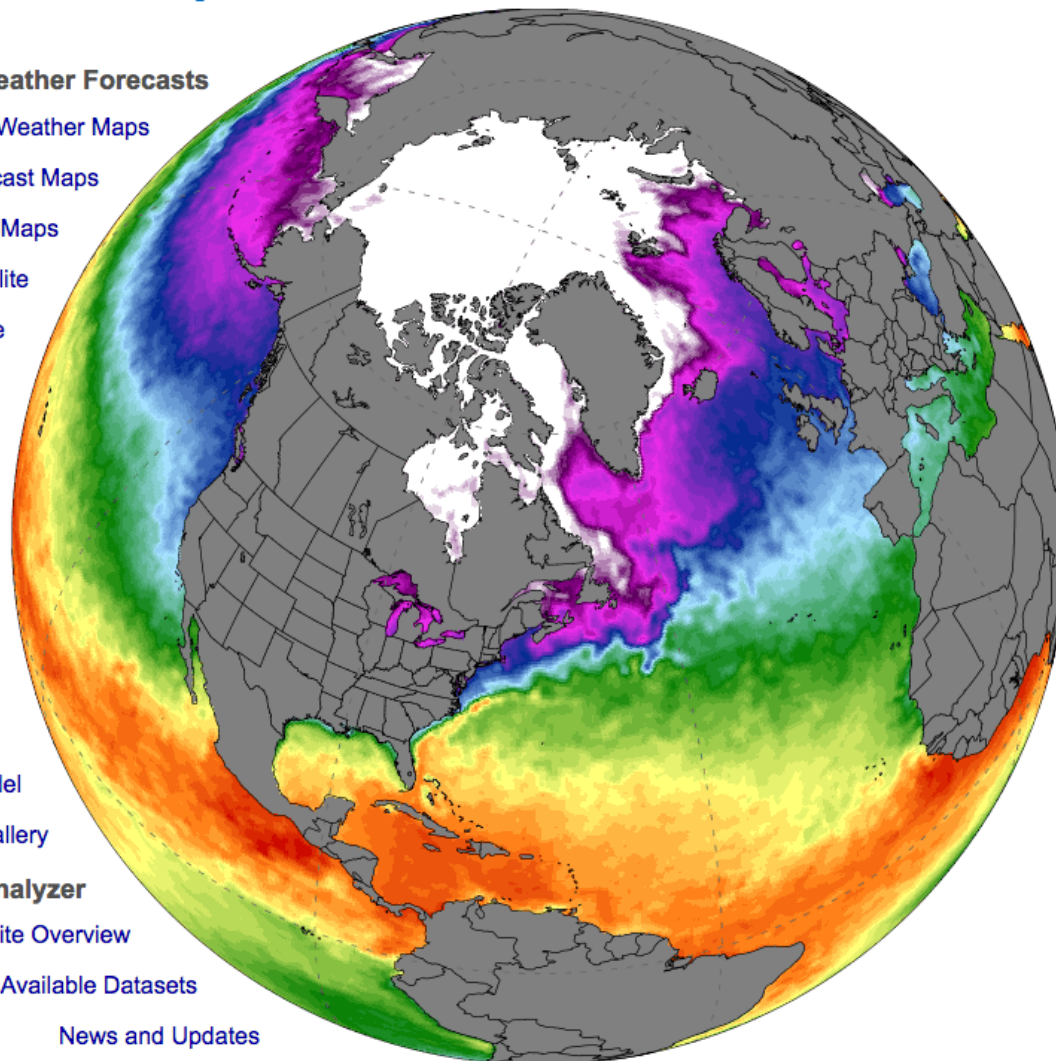


- Weather Forecasts**
  - [Today's Weather Maps](#)
  - [Outlook Forecast Maps](#)
  - [Hourly Forecast Maps](#)
  - [U.S. Radar & Satellite](#)
  - [Archived U.S. Satellite](#)
- Climate Models and Data**
  - [Daily Reanalysis & Sea Ice Maps](#)
  - [Monthly Reanalysis Maps](#)
  - [Monthly Reanalysis Timeseries](#)
  - [Monthly Reanalysis Correlations](#)
  - [Monthly U.S. Timeseries & Maps](#)
  - [Global SST Timeseries & Maps](#)
  - [Daily GHCN Station Data](#)
  - [Environmental Change Model](#)
  - [Animation Gallery](#)
- About Climate Reanalyzer**
  - [Site Overview](#)
  - [Available Datasets](#)
  - [News and Updates](#)

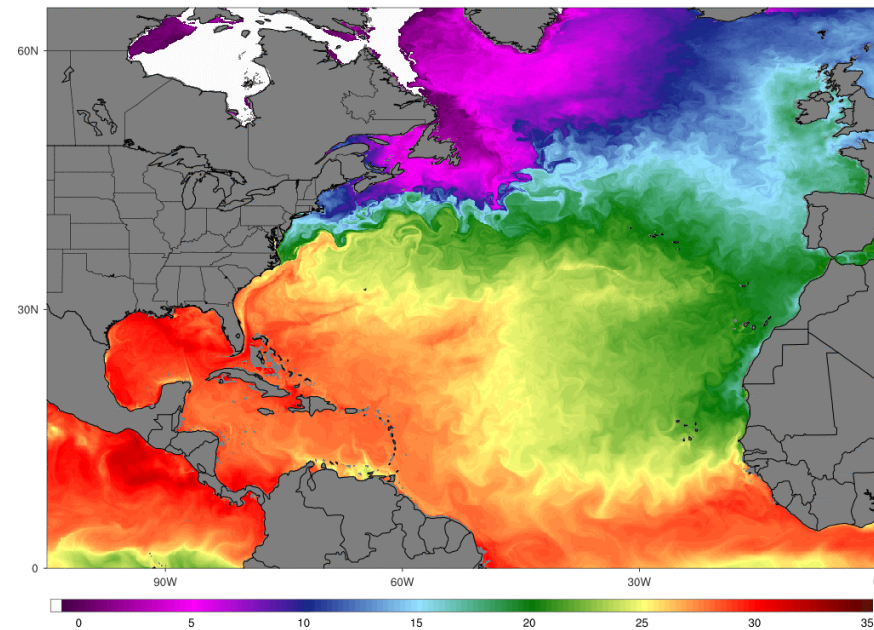


# ClimateReanalyzer.org

- **Reanalysis**
  - Monthly weather maps, timeseries, and linear correlation
  - Daily temperature, anomaly, and sea ice maps
- **GHCN Station Data**
  - Daily timeseries for global array of station data
- **NOAA/PRISM**
  - Monthly temperature, precipitation, and anomaly maps and timeseries for U.S.
- **Weather Forecasts**
  - Global (GFS) and regional (NAM, HRRR, RAP) maps and timeseries
- **Environmental Change Model**
  - Equilibrium biome and snow/ice mass balance solutions for range of global climate states.

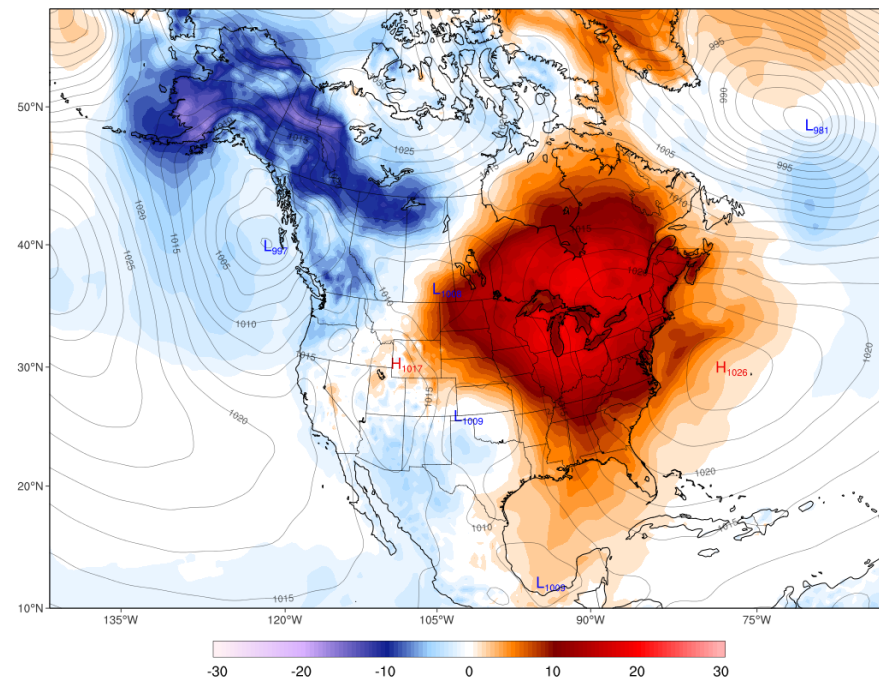
RTOFS Sea Surface Temperature (°C)  
Init 2018/06/03 00Z | f120 Valid Fri 00Z, Jun 08, 2018

ClimateReanalyzer.org  
Climate Change Institute | University of Maine

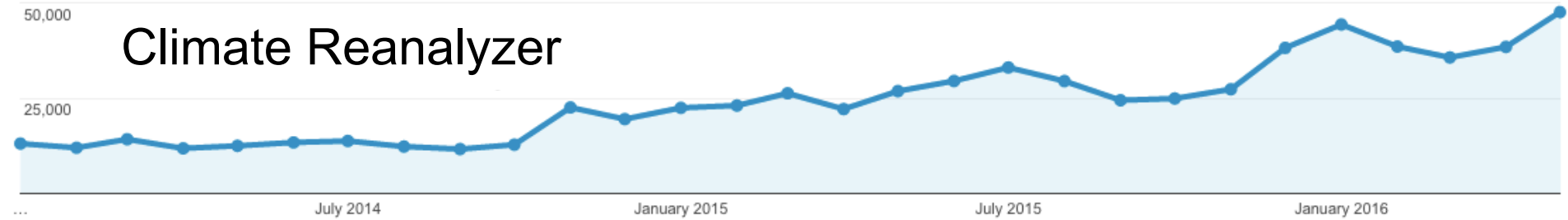


CFSV2 T 2m Anomaly (°C) [1979-2000 base], MSLP (hPa)  
Tue, Mar 20, 2012 | 3-day avg

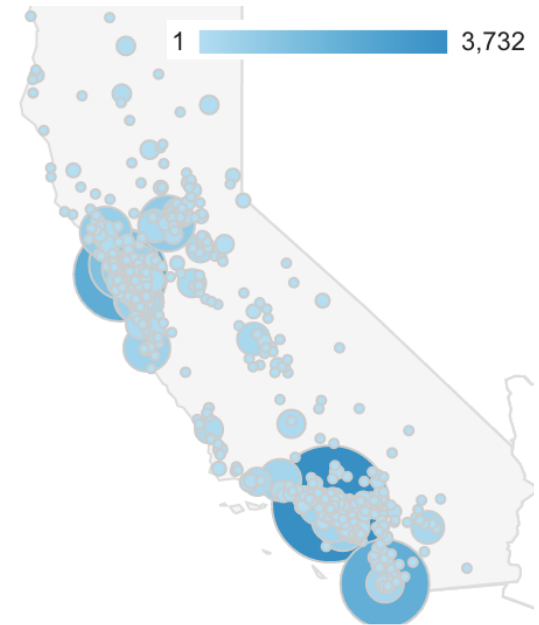
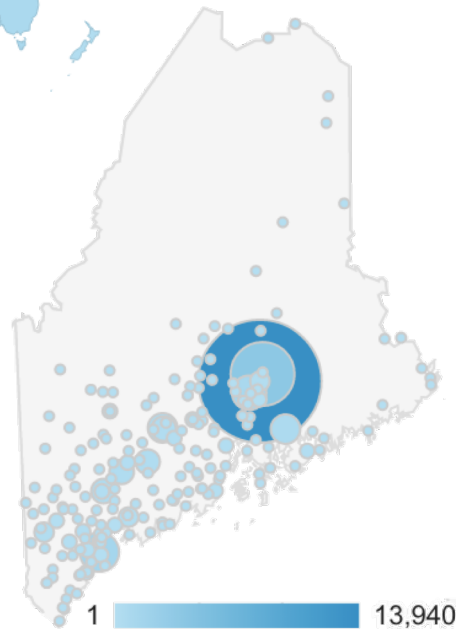
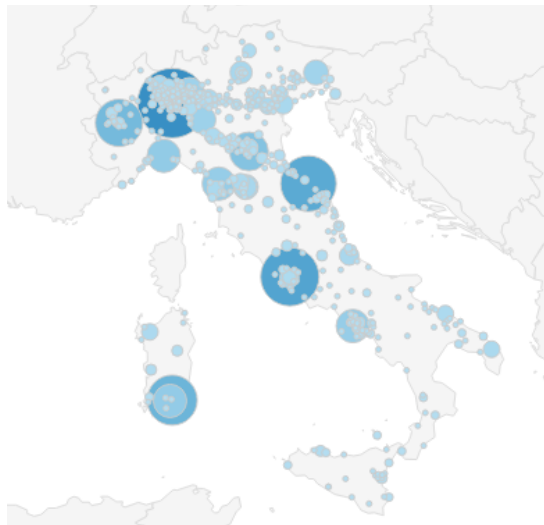
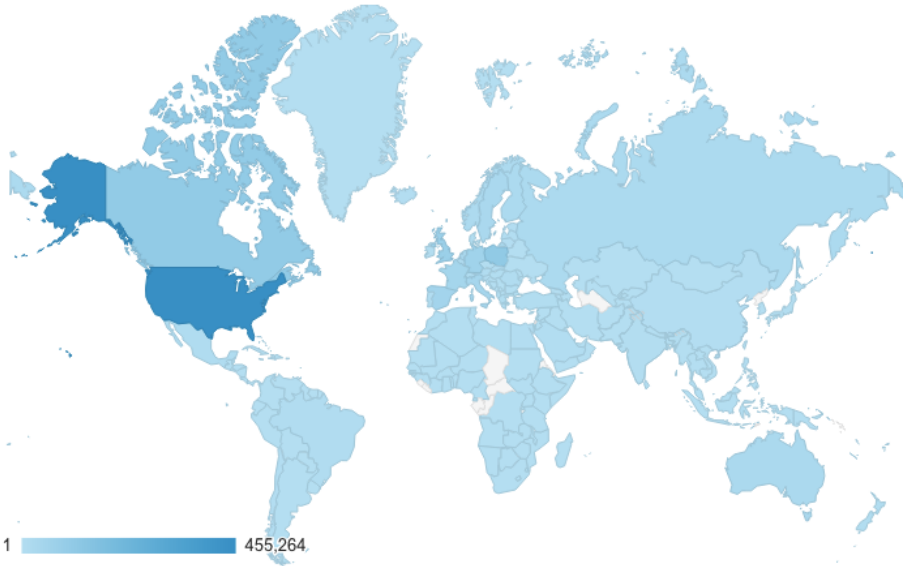
ClimateReanalyzer.org  
University of Maine | Climate Change Institute



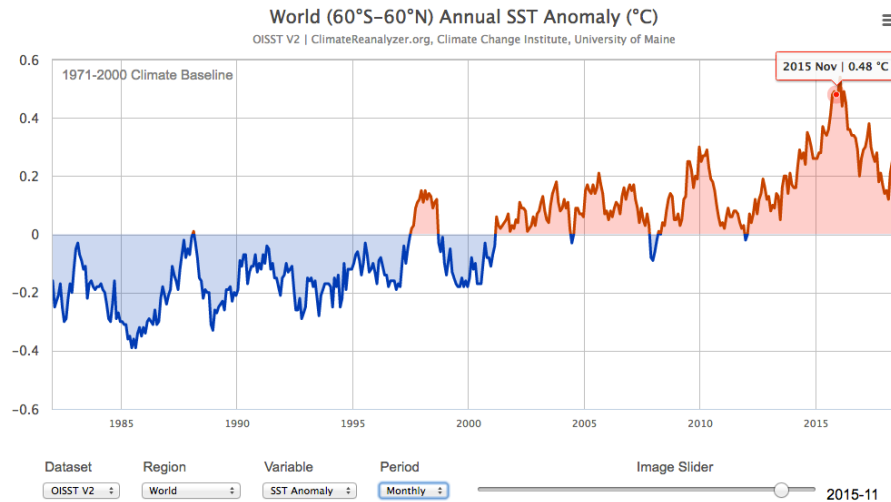
# Climate Reanalyzer



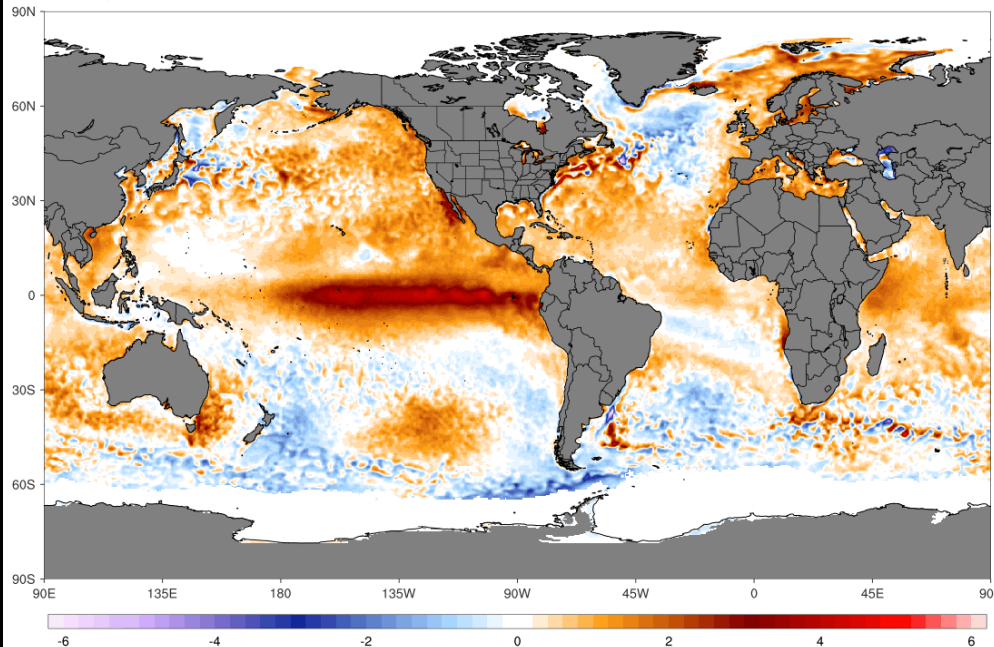
- Global Viewership
- 2.5 million sessions
- 5.2 million page views



## Monthly Global SST Timeseries & Maps



**OISST V2 SST Anomaly (°C) [1971-2000 base]**  
Nov 2015

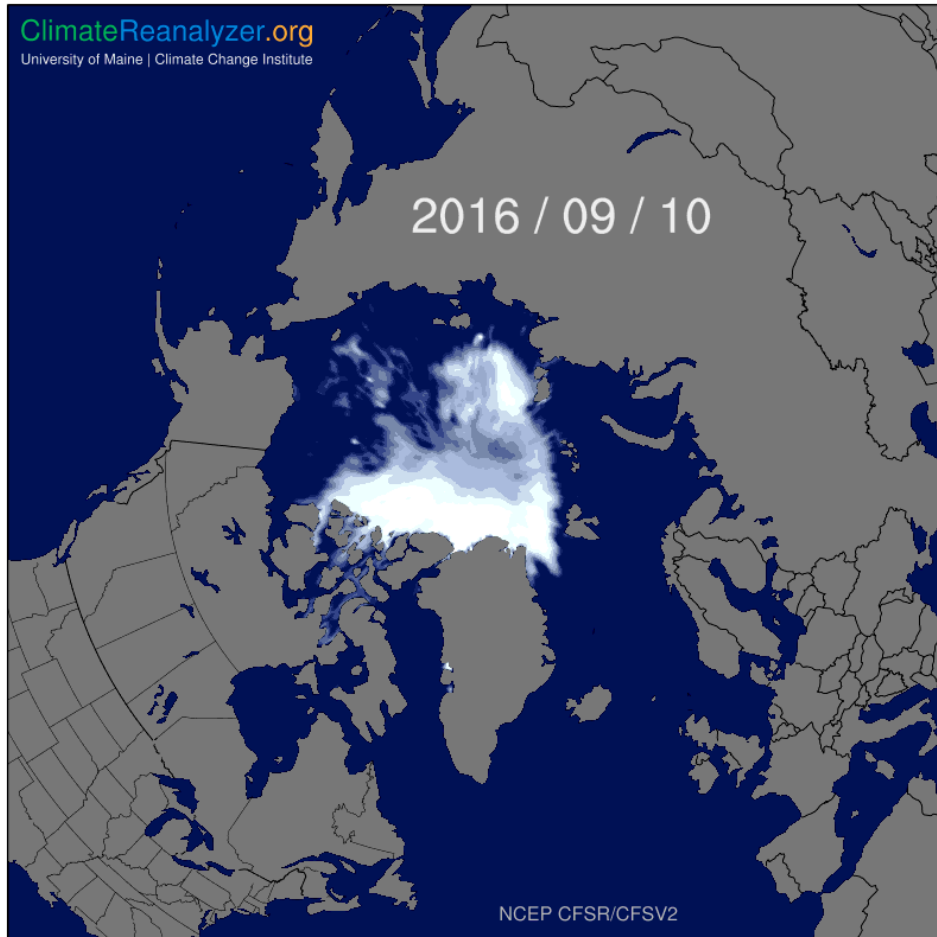
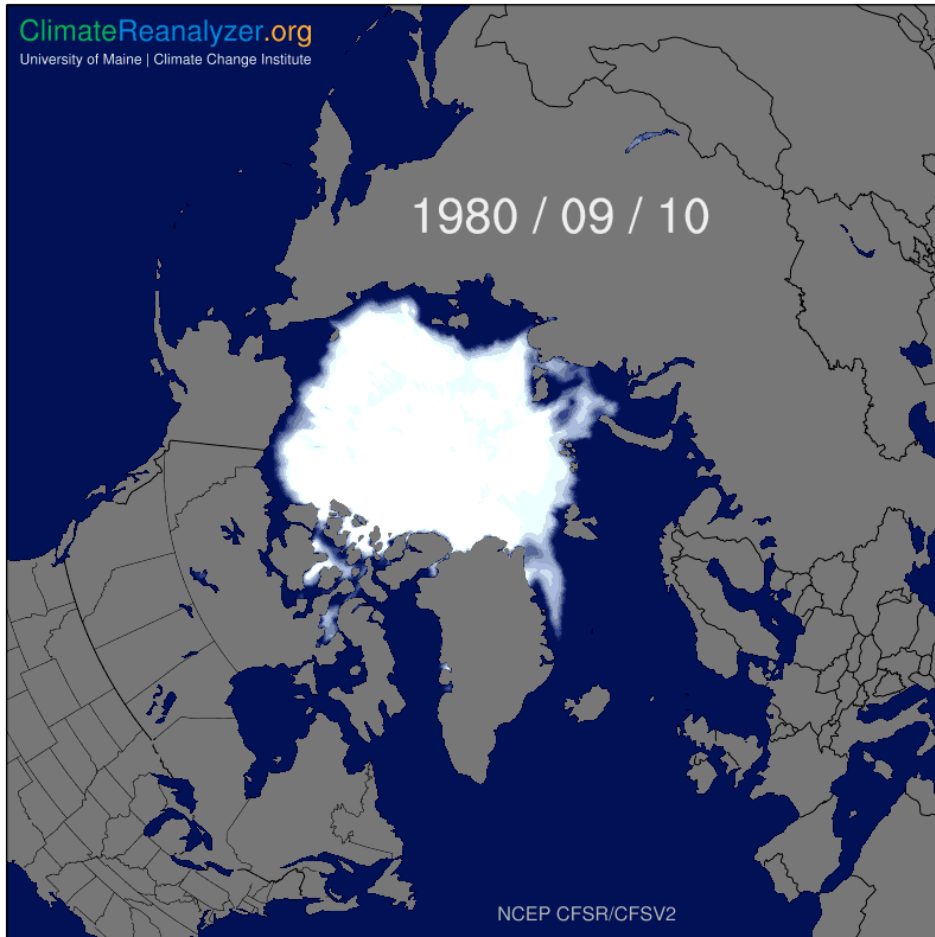


Some interfaces have both temporal and spatial contexts.

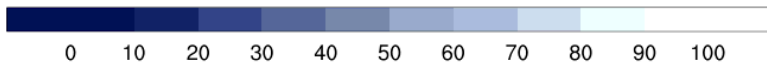
Move the cursor along the timeseries at the top to update the map below.



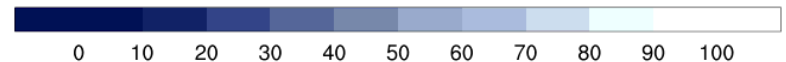
# Arctic Sea Ice



Sea Ice Concentration (%)



Sea Ice Concentration (%)

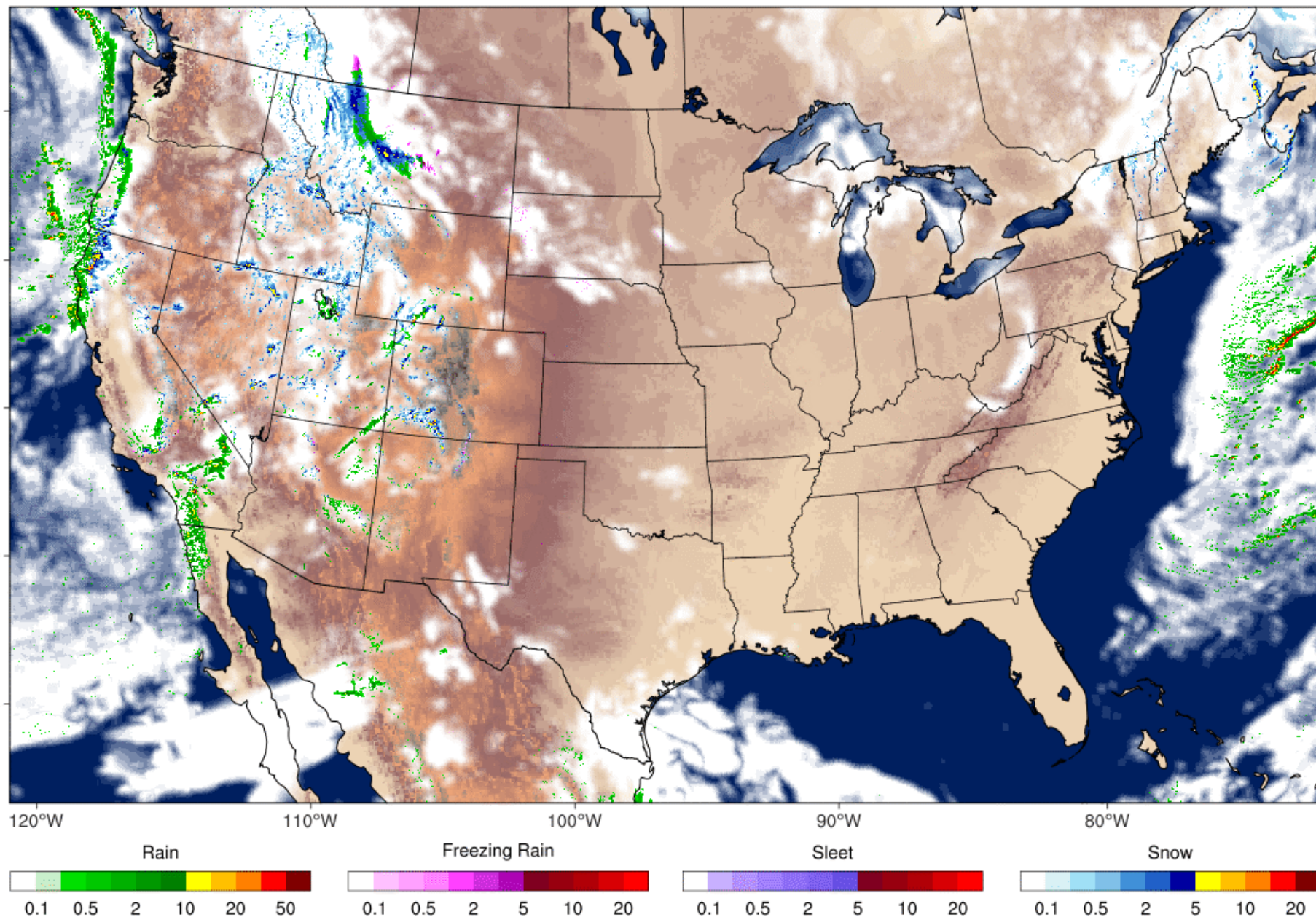


# NAM Precipitation (mm/h), Clouds (%)

Init 2018/03/15 12Z | f001 Valid Thu 09EDT, Mar 15, 2018

ClimateReanalyzer.org

University of Maine | Climate Change Institute





ClimateReanalyzer.org  
Climate Change Institute | University of Maine

