

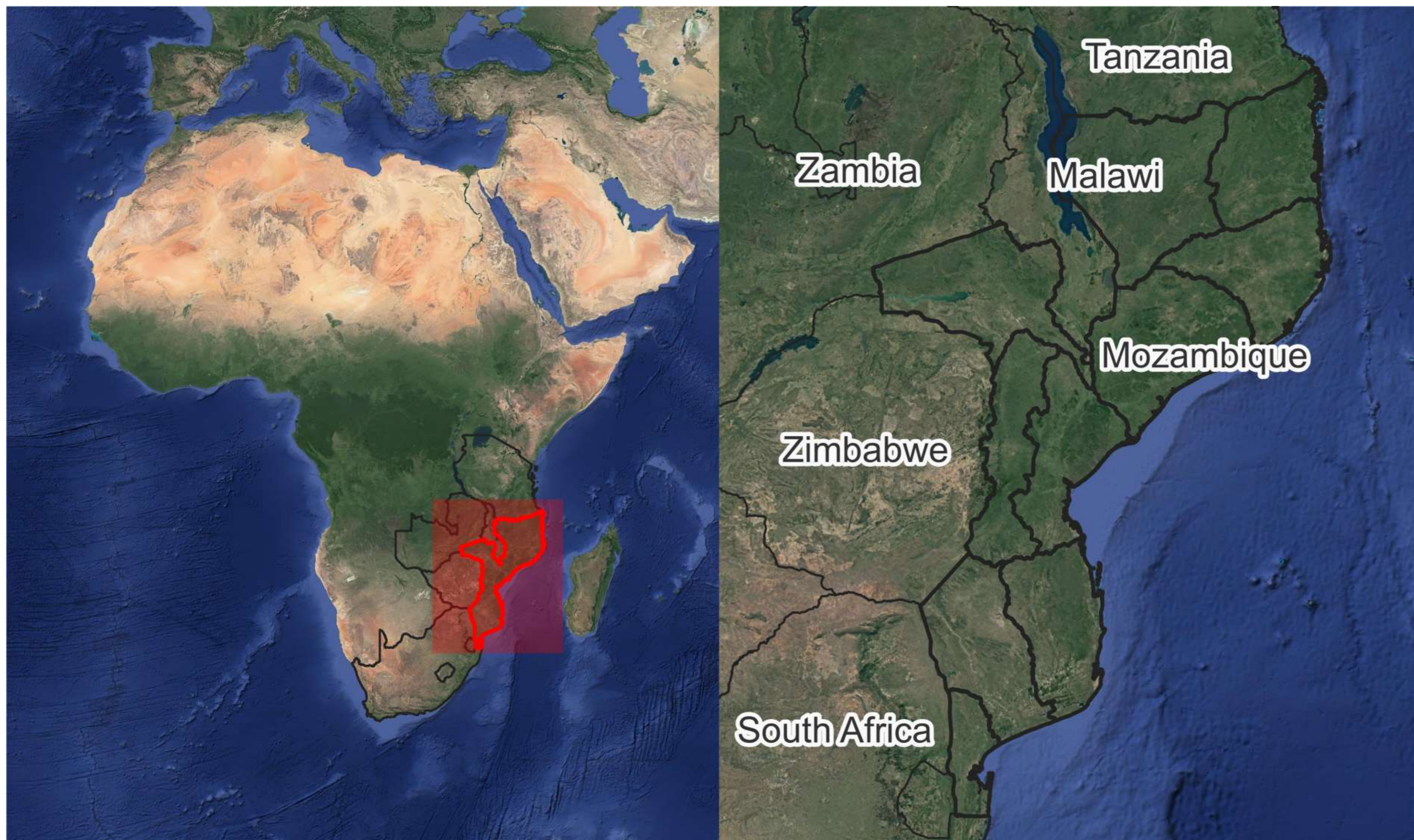


COP29 – Side Event
**Use of Earth Observation for Forest Monitoring
and Reporting REDD+ in Mozambique**

Muri Soares and Hercilo Odorico
MRV Unit, National Fund for Sustainable Development
November 21, 2024



Mozambique





Challenges for forest monitoring in Mozambique



- Miombo woodlands
 - Open forests
 - Deciduous
 - Frequent wildfires
- Small-scale shifting agriculture



Drivers for developing annual mapping of deforestation

1. Updating National GHG Inventory - LULUCF
2. Monitoring FCPF Zambézia Emissions Reduction Program
3. Generate estimates of deforestation at provincial and district level for management purposes
4. Key indicator for rural development projects of the World Bank



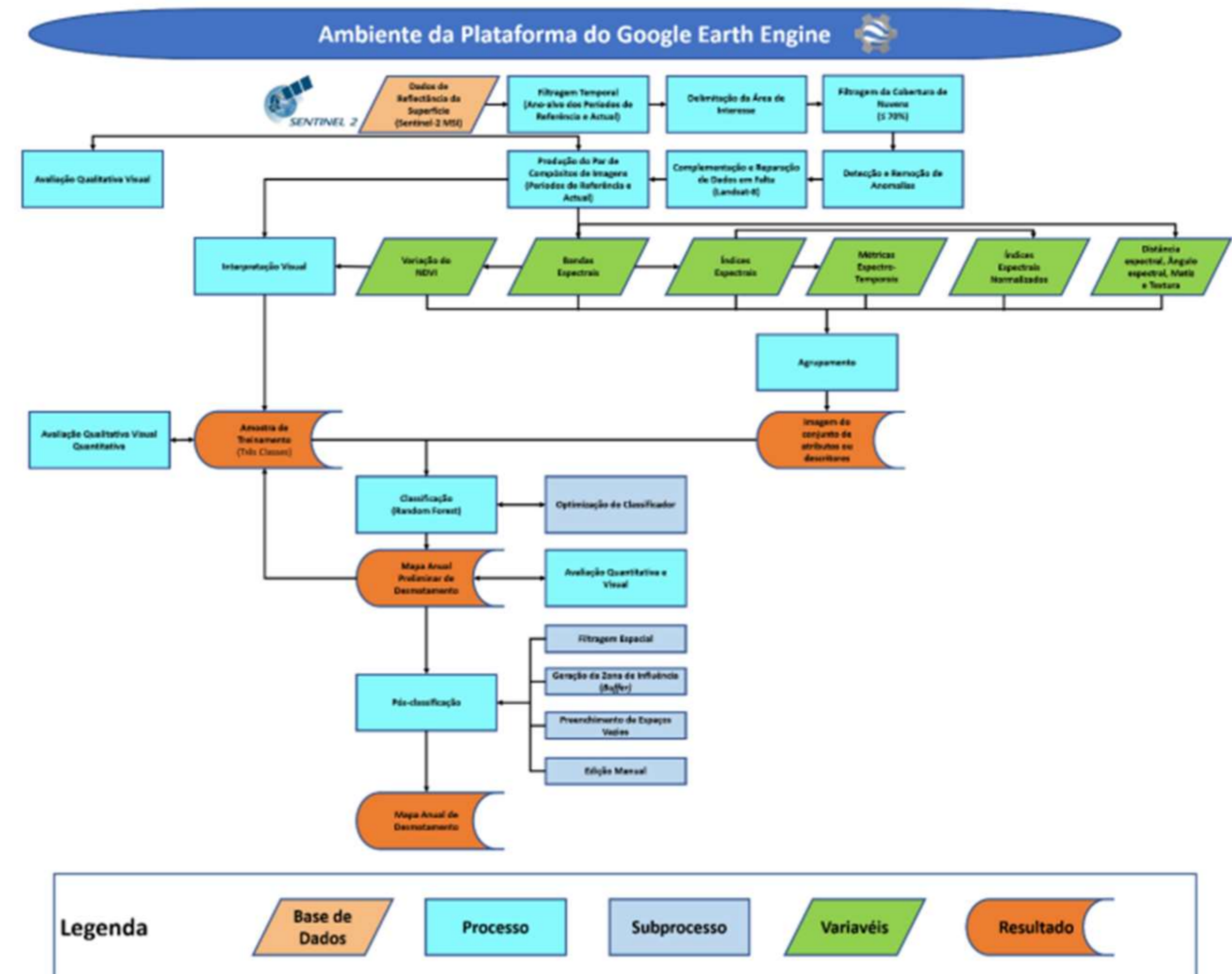
Annual forest monitoring tool

Map production

- Google Earth Engine Platform
- Using Sentinel-2 imagery
- Random forest classifier

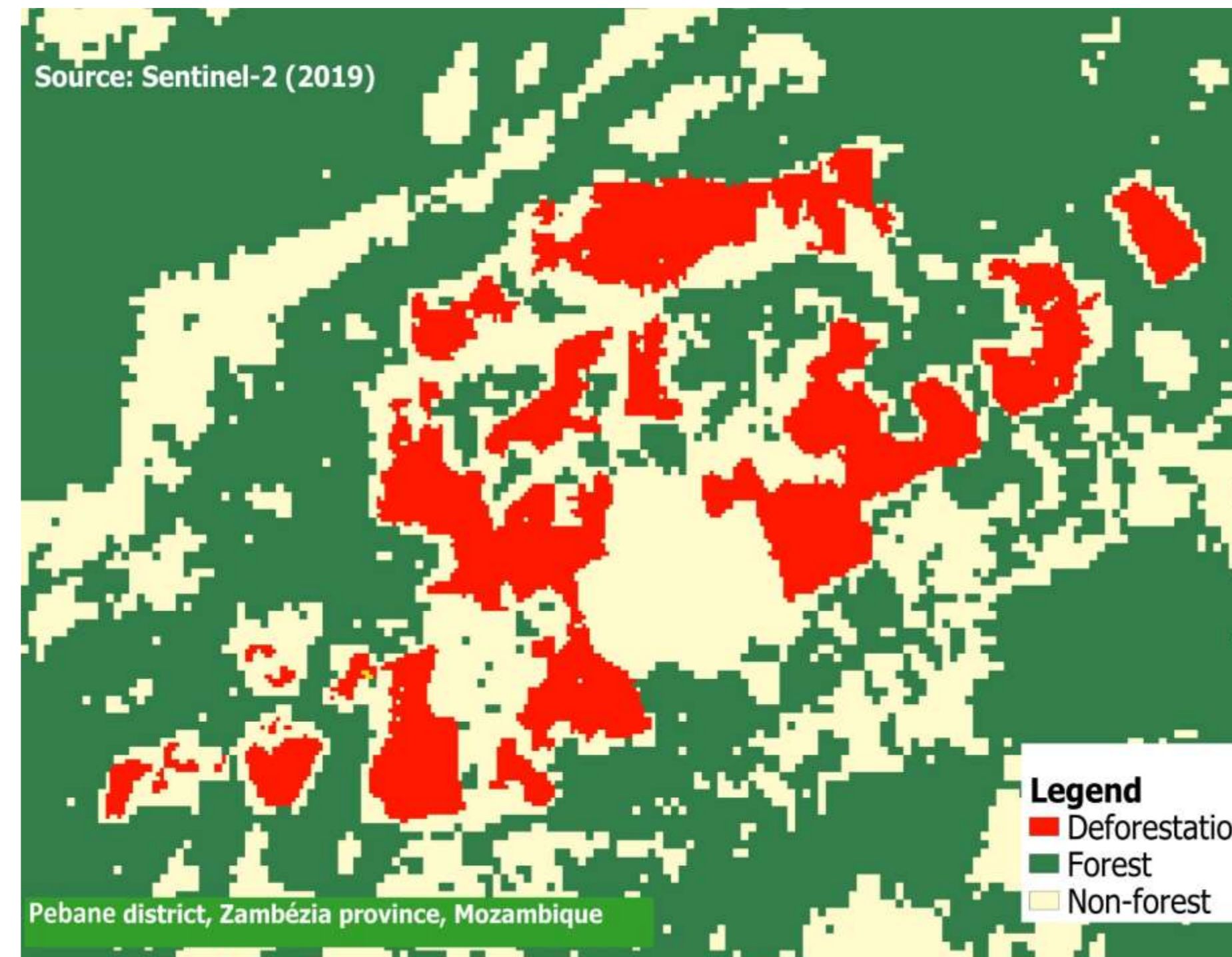
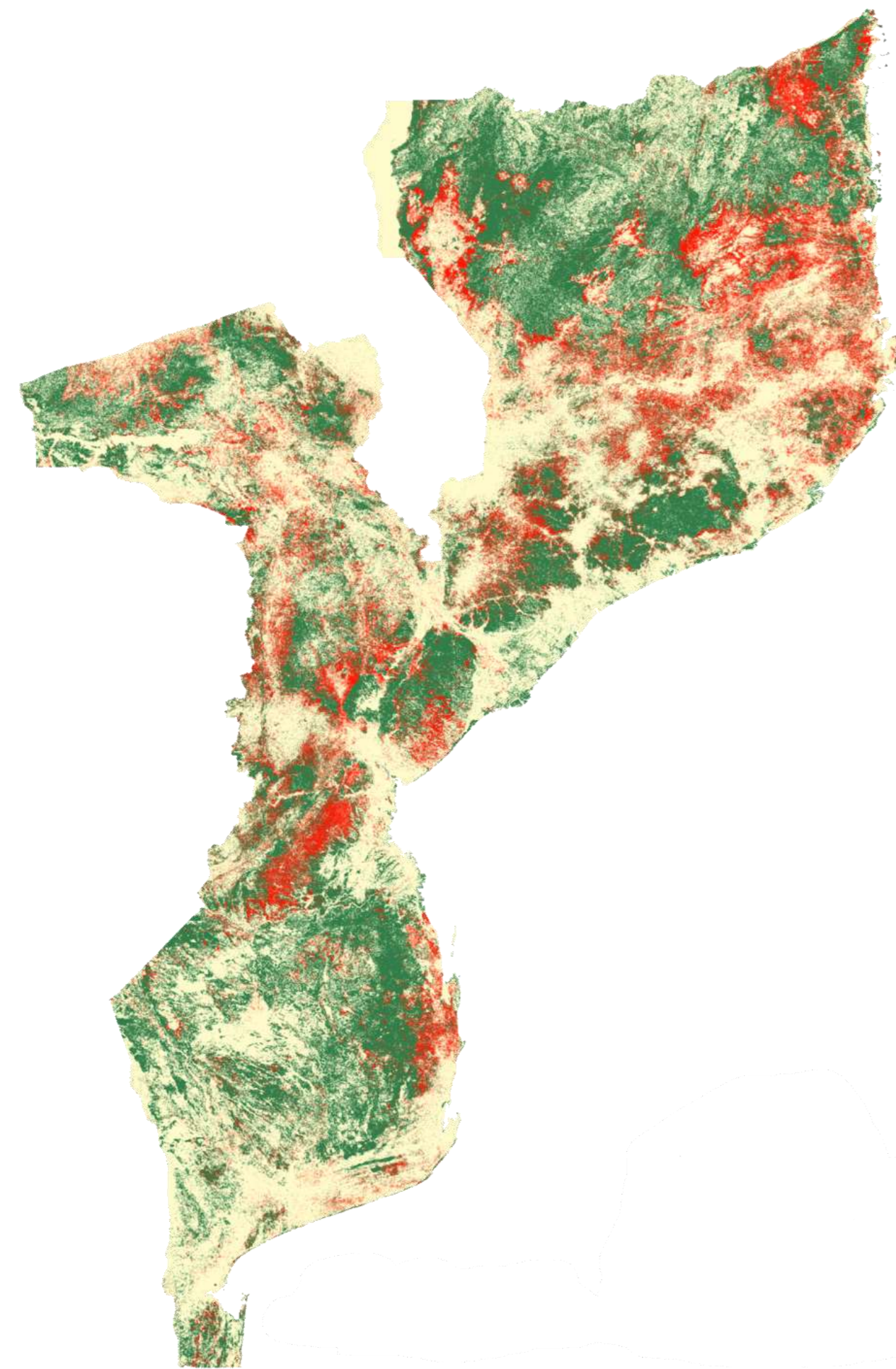
Sample-based area estimation

- Statistically robust estimates of area
- Validation using Planet, Sentinel-2 and Google Earth satellite imagery



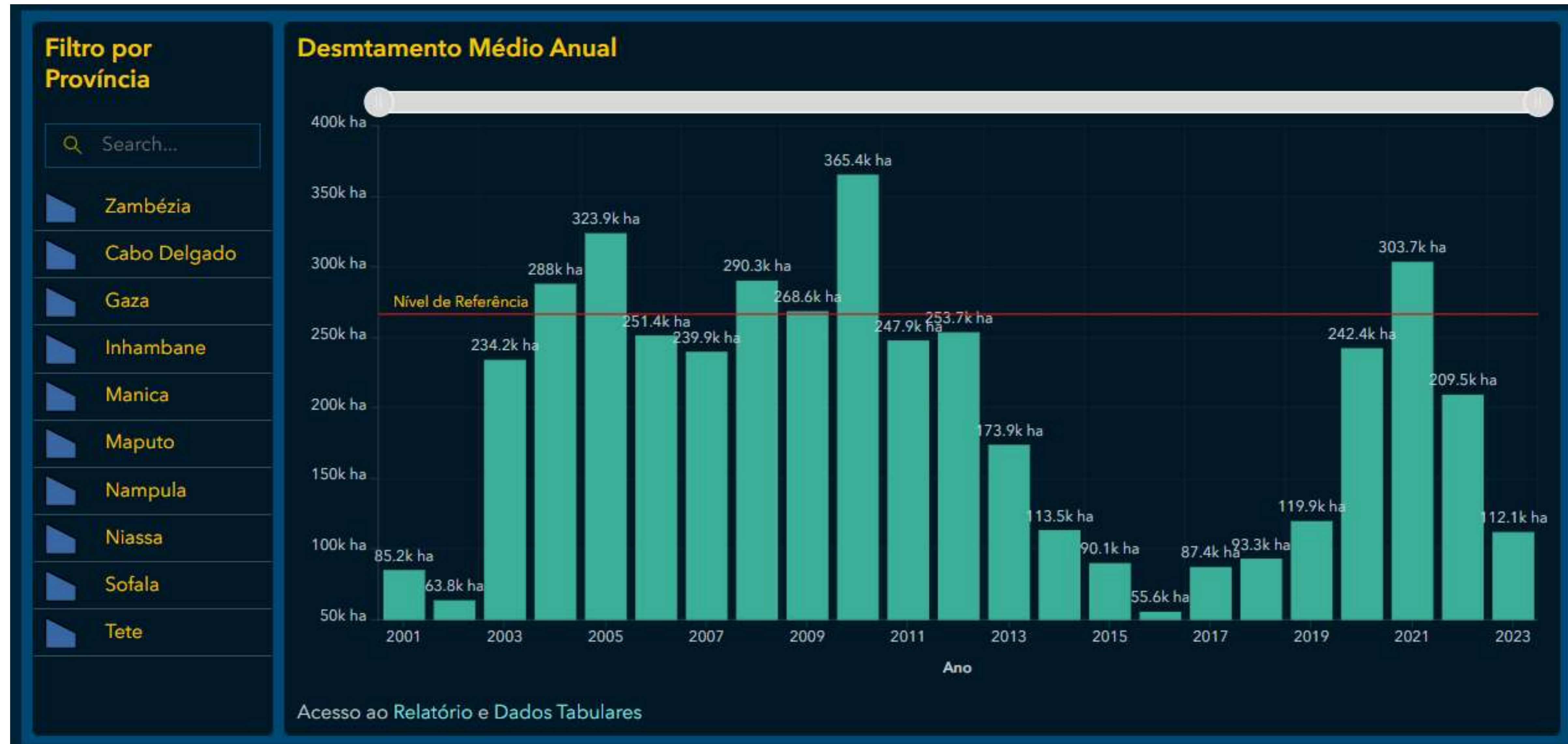


Annual forest monitoring tool (2)



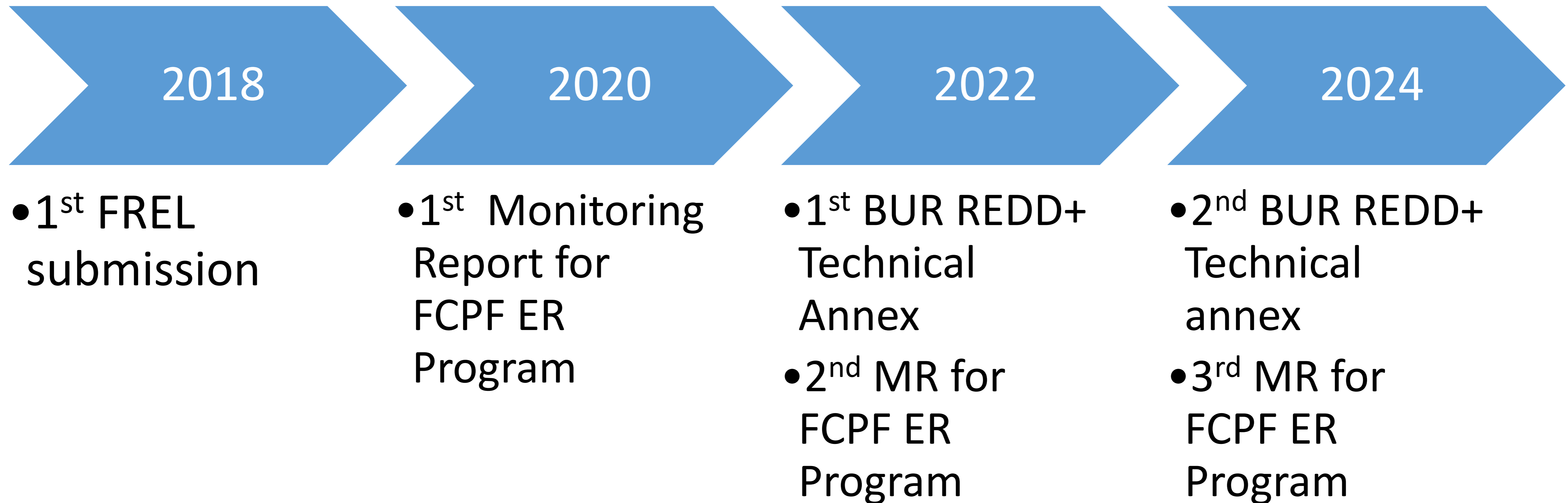


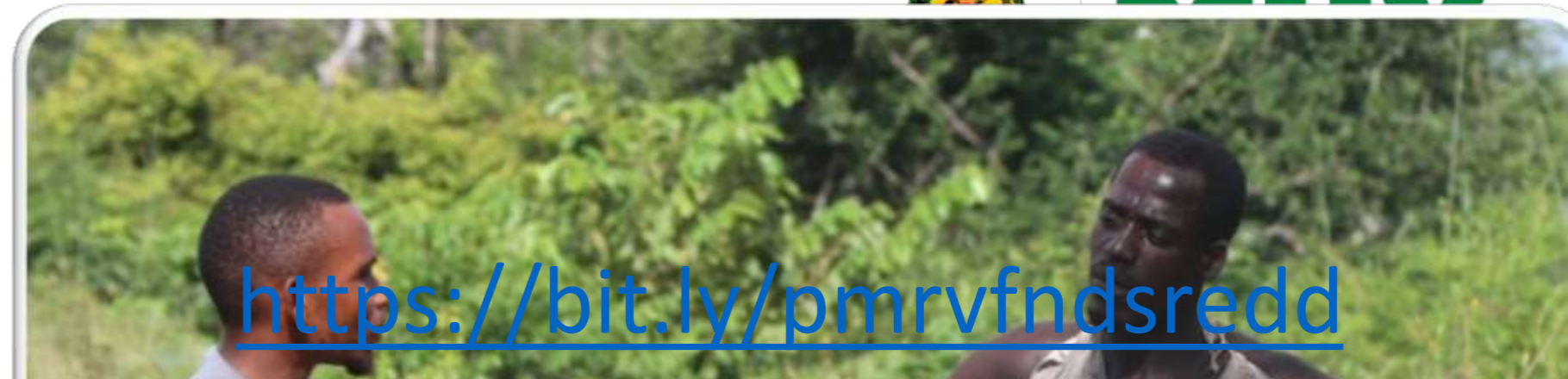
Deforestation statistics web portal





Results of forest monitoring system for REDD+ reporting





Pontos Verificados

841



Earthstar Geographics | Esri, HERE, Garmin

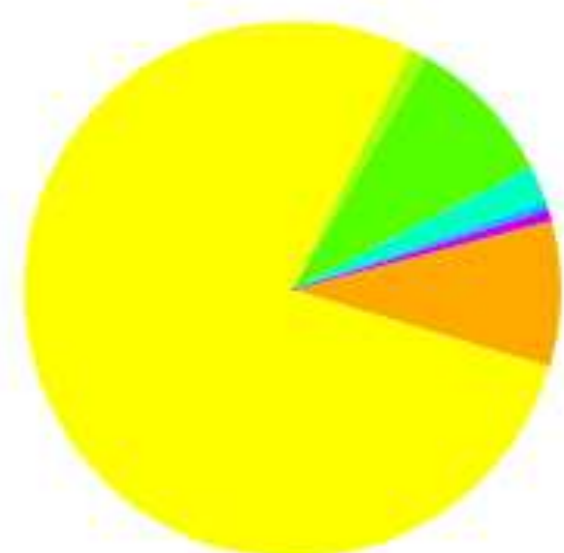
Powered by Esri

% de Confirmação de Desmatamento



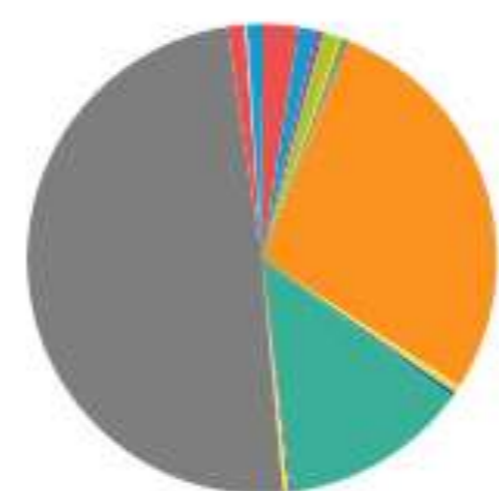
Não 3.99% Sim 96.01%

Causas de Desmatamento



Agricultura Comercial	8.8%	Agricultura Itinerante	77.66%
Assentamento Humanos	1.05%	Exploração Florestal	9.07%

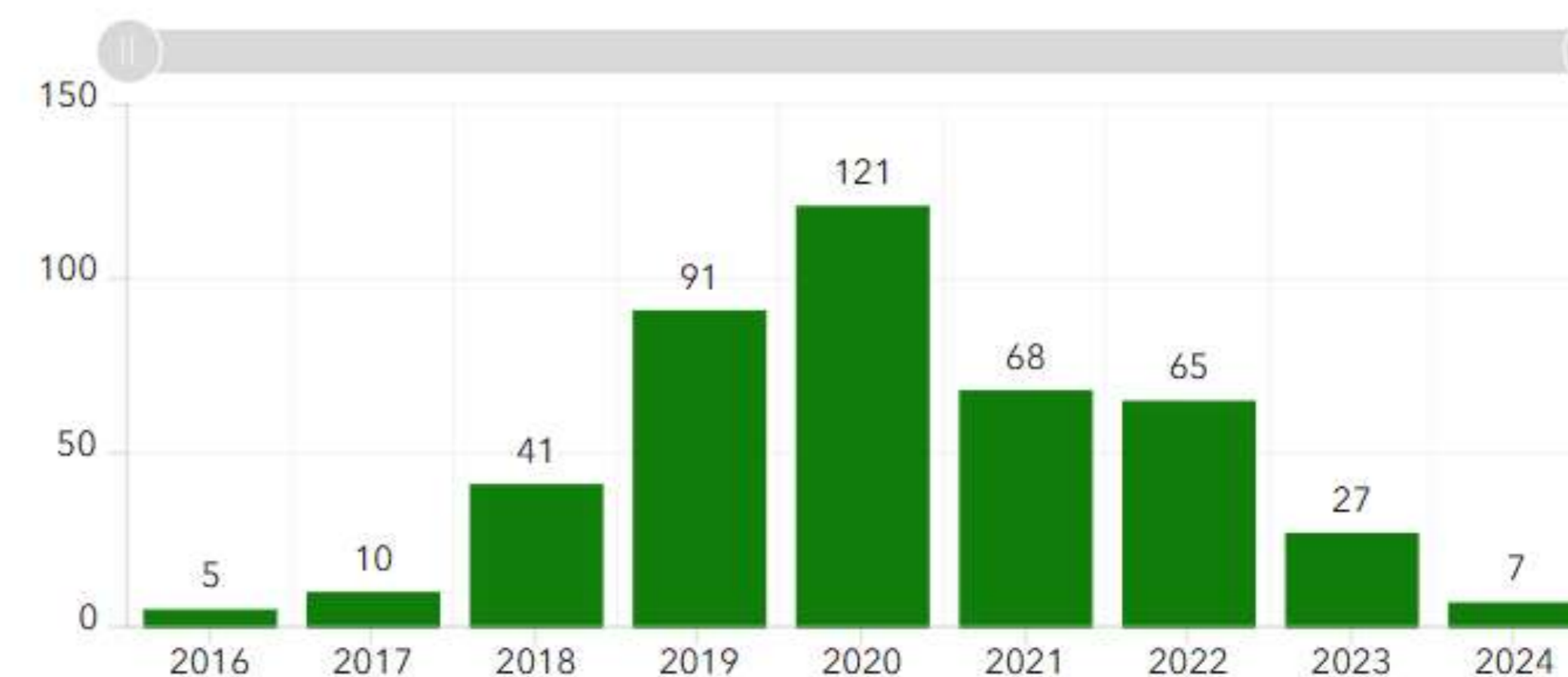
Culturas praticadas nas áreas desmatadas



Amendoim	2.52%	Arroz	1.18%
Bananeira	0.5%	Batata Doce	1.18%
Cajueiro	0.17%	Cebola	0.34%

Last update: 2 seconds ago

Pontos Verificados por Ano de Desmatamento



Last update: 2 seconds ago

Ano de desmatamento | **Provincia** | Distrito | Comunidade





Conclusions

- Establishment of a national MRV team capable of monitoring forests was key
- Monitoring system allows generation of data for both national LULUCF inventory and jurisdictional REDD+ reporting
- Application of international best practices enabled a system that could pass both UNFCCC technical reviews but also validation and verification by international auditing firms
- Freely available imagery (Sentinel 2 - ESA, Planet – NICFI) and tools (Google Earth Engine, Collect Earth – FAO) allowed for cost-effective monitoring system



Visit us: <http://www.fnds.gov.mz/mrv/>



MRV

ACTIVIDADES

GALERIA

DOCUMENTOS

PLATAFORMA GEOESPACIAL

LINKS ÚTEIS

Especialistas da Unidade MRV do FNDS participam de um Workshop organizado pela Iniciativa Global de Observação das Florestas (GFOI) em Postdam - Alemanha

Para aceder a mais detalhes, clique aqui.



Reuniões & Workshops



Trabalhos de Campo



Estudos



Capacitações



Trocas de Experiências