



Capacity development and improvements for African forest and carbon monitoring

Martin Herold

GFZ Potsdam, GFOI R&D coordinator

herold@gfz-potsdam.de

Lead partners



GFOI is a flagship of GEO GROUP ON EARTH OBSERVATIONS

The GFOI Office is financed by the Governments of Australia and Norway



GFOI vision

GFOI





MGD
Advisory Group



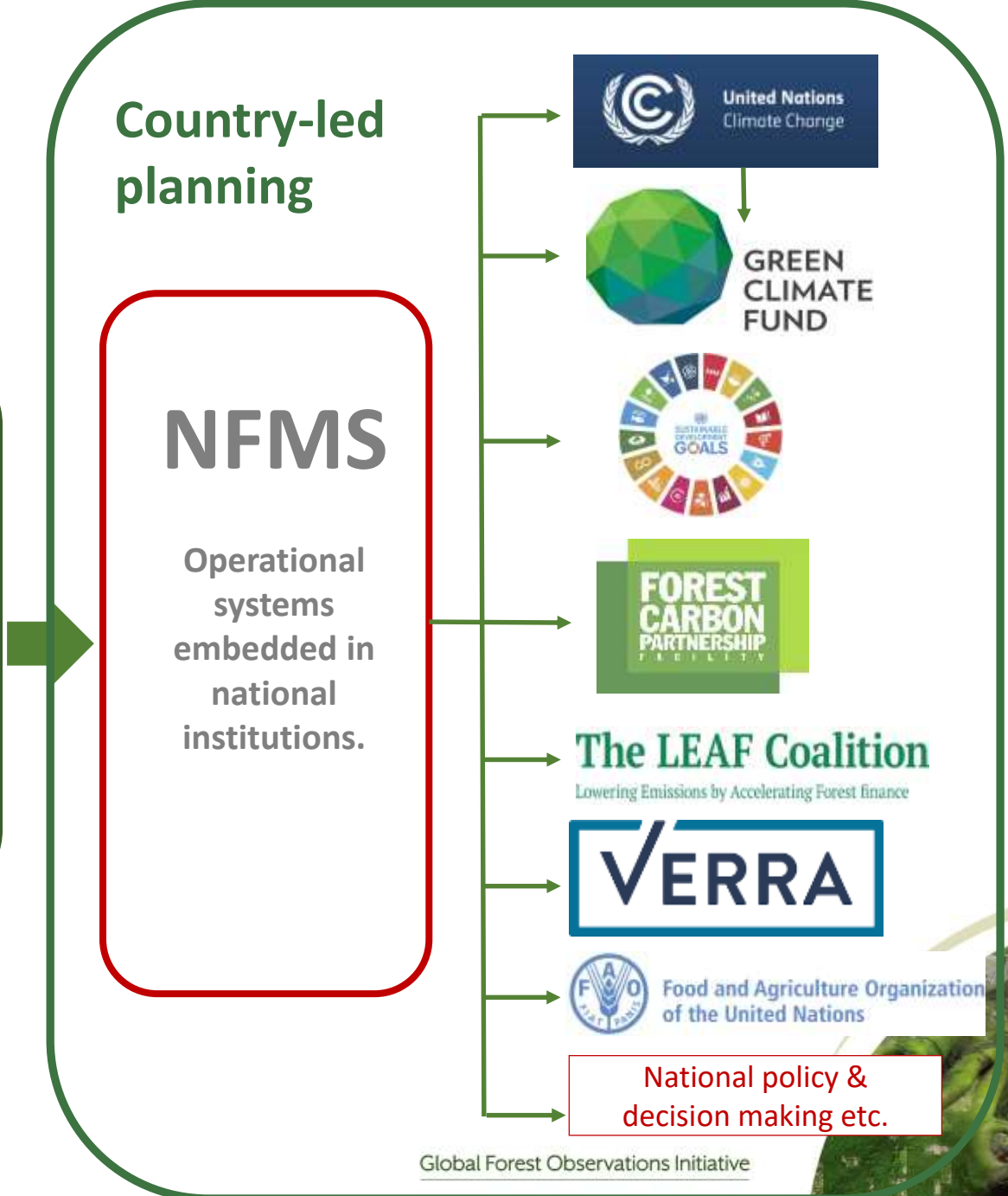
United Nations
Climate Change Secretariat



Family of Resources

1. Holistic capacity building framework for countries

2. Organizing framework for technical resources provided by development partners.



Country-led planning

NFMS

Operational systems embedded in national institutions.



United Nations
Climate Change



GREEN
CLIMATE
FUND



SUSTAINABLE
DEVELOPMENT
GOALS



FOREST
CARBON
PARTNERSHIP
FACILITY

The LEAF Coalition

Lowering Emissions by Accelerating Forest finance



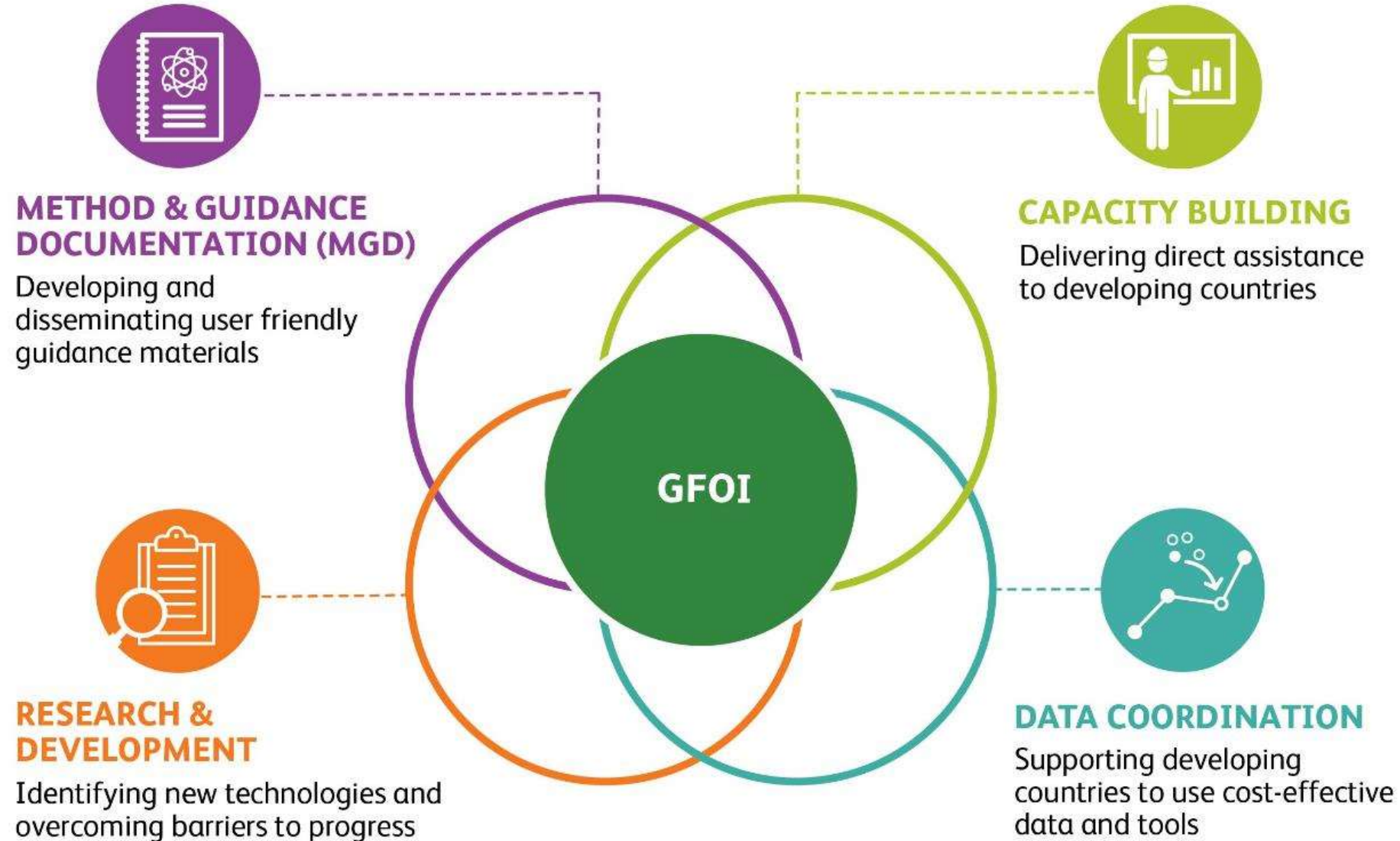
VERRA



Food and Agriculture Organization
of the United Nations

National policy &
decision making etc.

FOUR GFOI COMPONENTS



MRV operationalization support from the GFOI



MGD

Methods and guidance on the integration of remote-sensing and ground-based observations for estimation of emissions and removal of greenhouse gases in forests.



REDDcompass

Guides countries through key themes, concepts and actions of REDD+ National Forest Monitoring Systems for Measurement, Reporting and Verification.



ROT

Registry of tools to support the operationalization of REDD+ National Forest Monitoring Systems for Measurement, Reporting and Verification.



openMRV

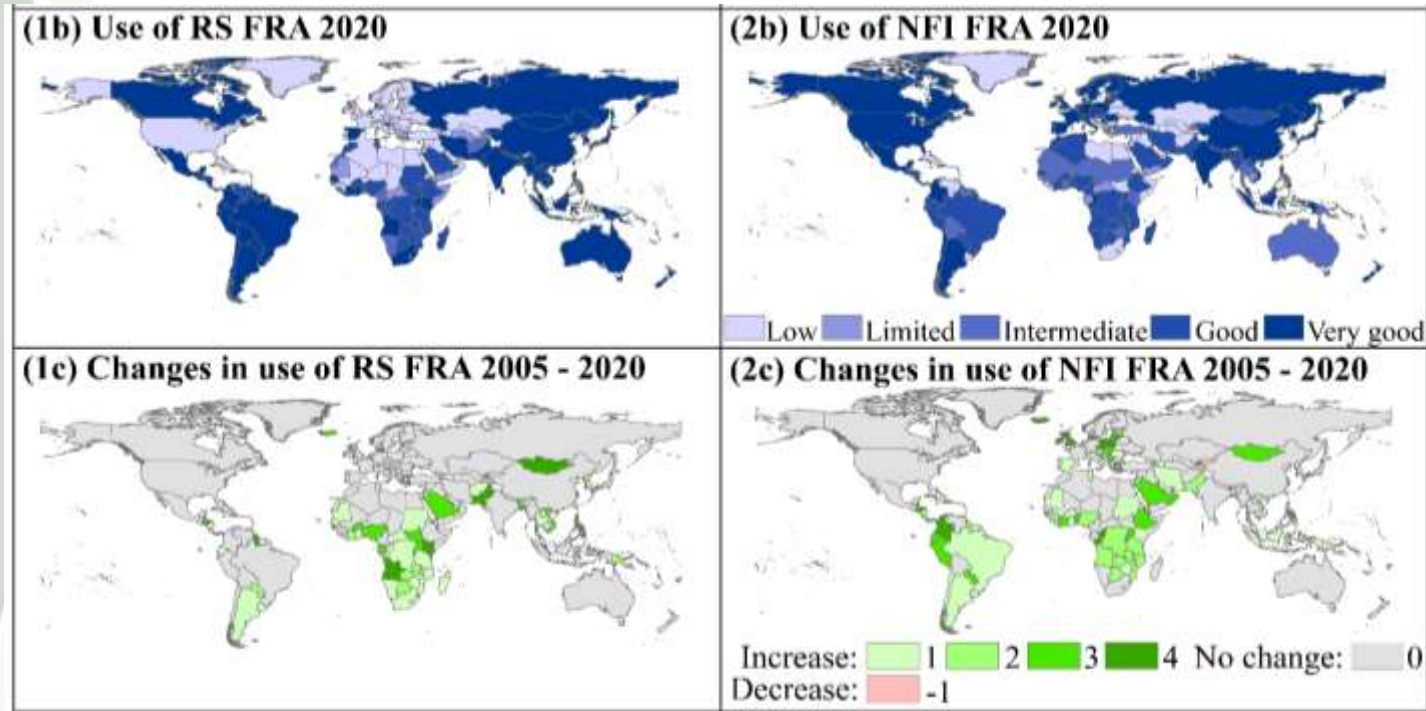
Open source knowledge platform that delivers resources to support countries and other users to operationalize their forest MRV processes.

GFOI and Africa

- 160 support activities delivered to African countries by GFOI partners
- Regional Country Needs Assessment (CNA) workshop convened in Ethiopia in 2019 – more to come with CLP
- Mozambique - first country to receive payments for emissions reductions from the FCPF Carbon Fund, a GFOI lead partner
- The last in-person GFOI Plenary was held in Africa: Maputo in April 2019.



National Forest Monitoring/Data Assessment based on FAO's FRA 2020

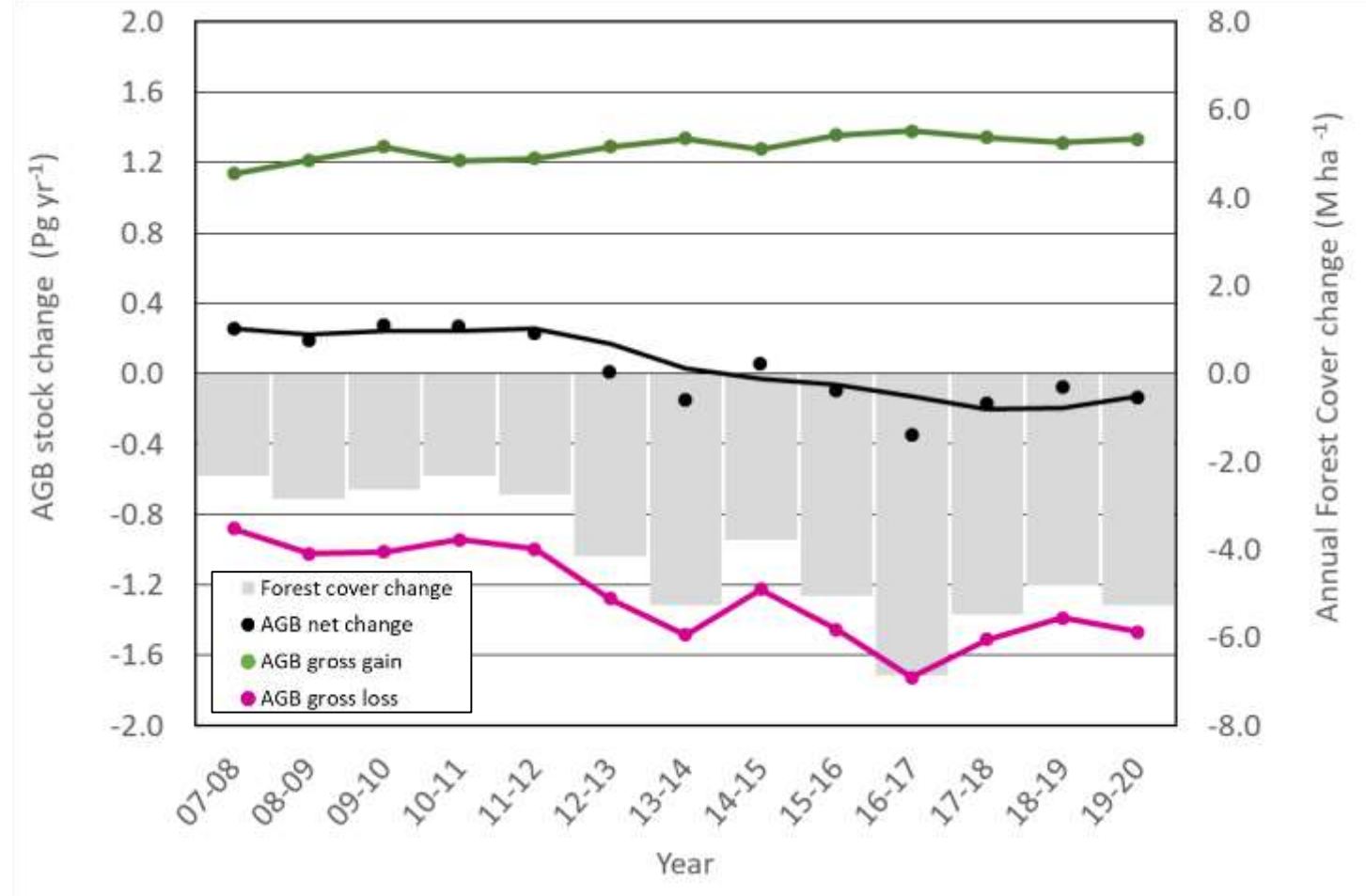
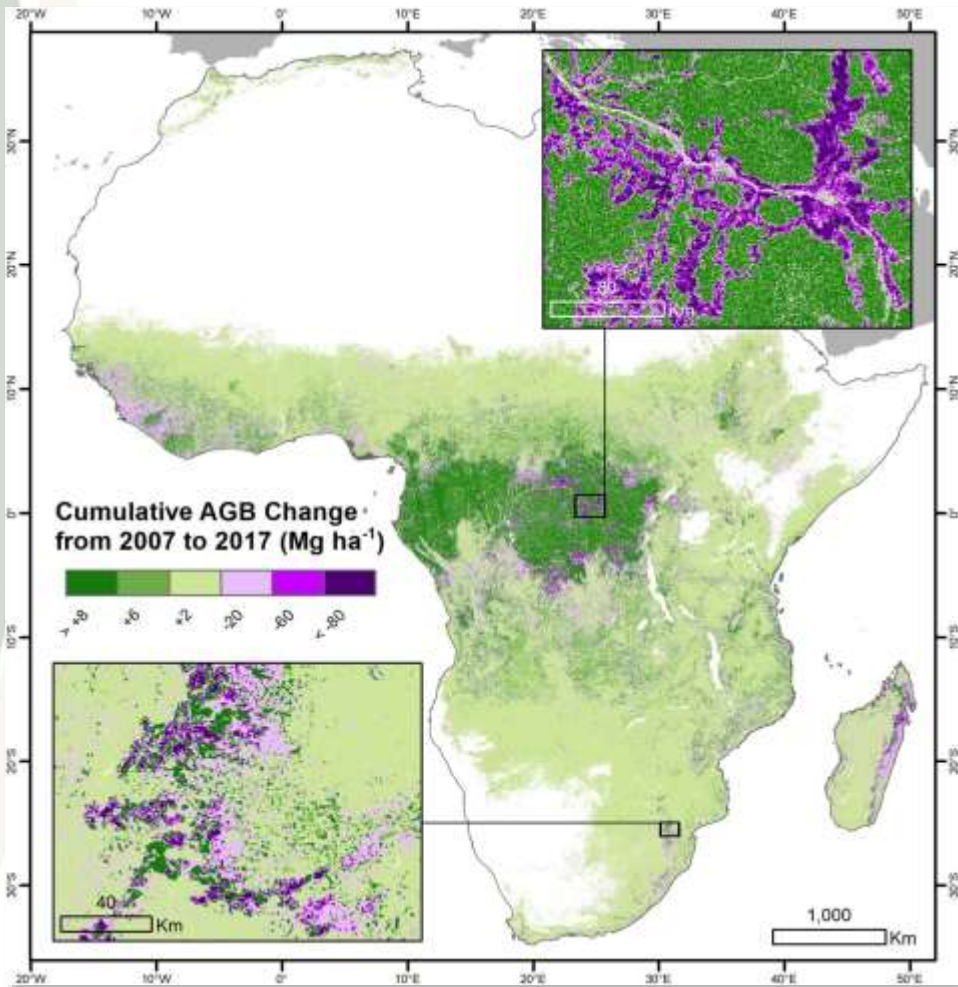


Nesha et al., 2021. [An assessment of data sources, data quality and changes in national forest monitoring capacities in the Global Forest Resources Assessment 2005–2020](#), ERL

Nesha et al., 2022. [Exploring characteristics of national forest inventories for integration with global space-based forest biomass data, STOTEN](#)

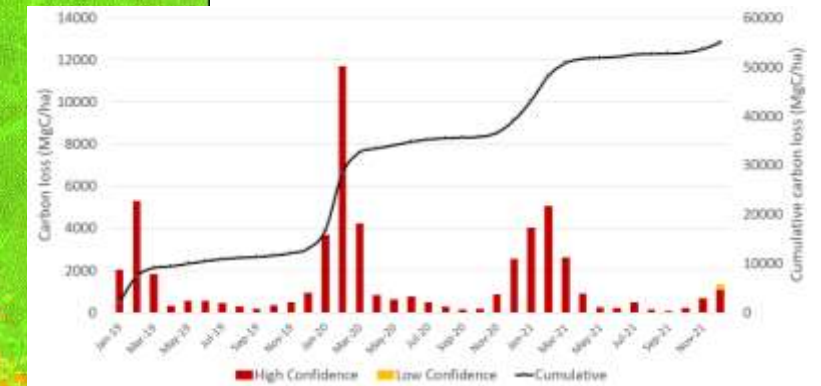
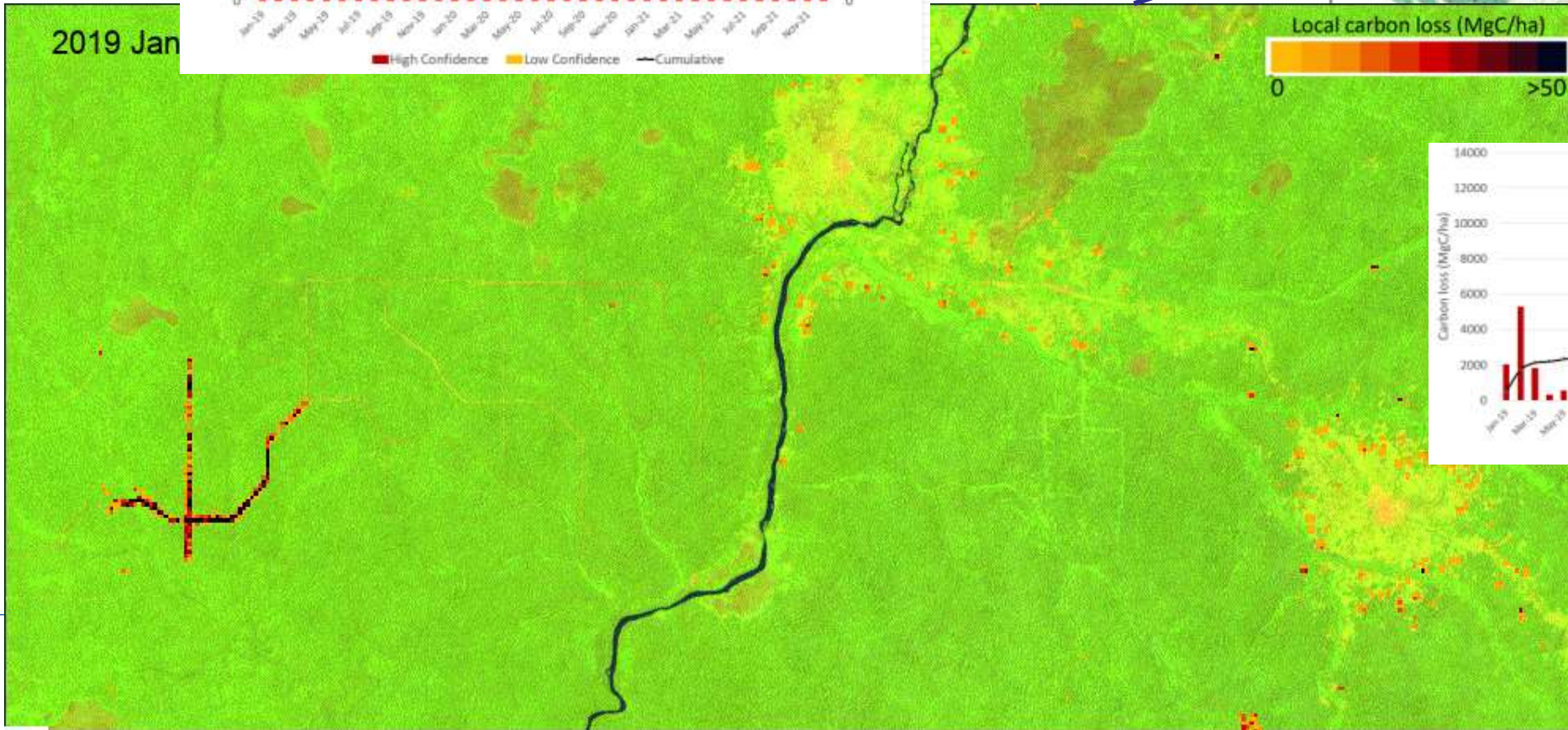
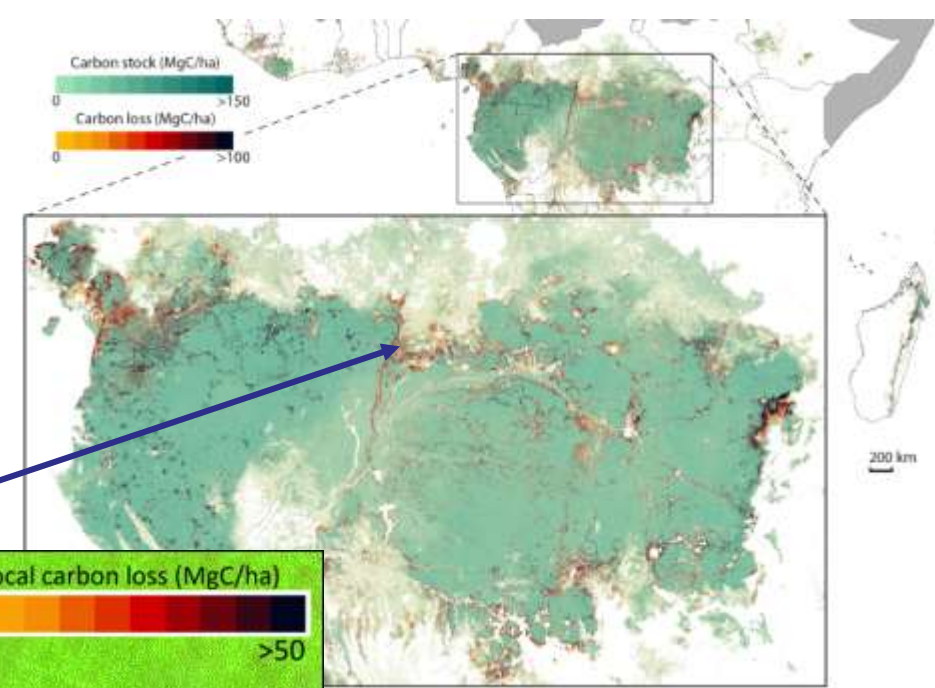
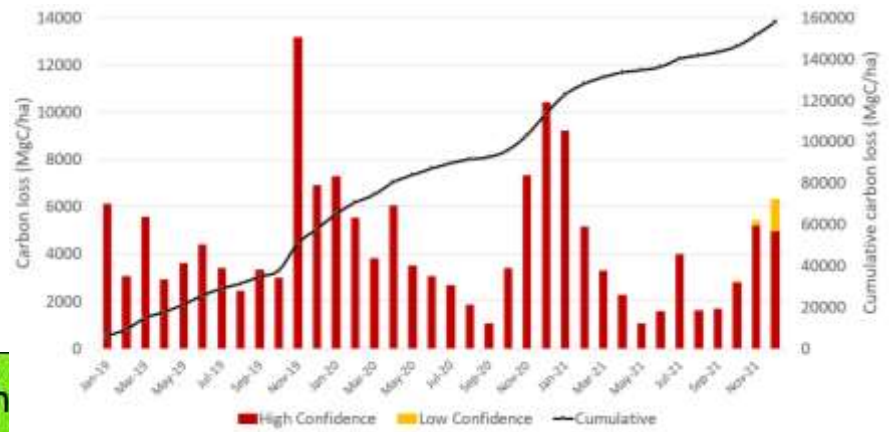
- Continuous improvement in the use of RS for area & change estimation based on free and open satellite data
- National forest inventory (NFI) data improvements widespread in tropics, mostly one-time NFI's
- Importance of both international support and countries own investments
- Key issues for future:
 - Sustain progress
 - Fill remaining gaps
 - Respond to evolving needs
 - Space-based biomass estimation and NFI's

Analysing Aboveground Woody Biomass Dynamics in Africa



Rodríguez-Veiga et al., (in preparation)

Higher frequency/near-real time tracking of activities and local carbon losses Central Africa



Csillik et al. 2022. Nature Coms.EE

<https://gena.users.earthengine.app/view/raddalert>

Want to know more or join?

gfoi.org

facebook.com/gfoi1

twitter.com/gfoi_forest

office@gfoi.org

