

# CLIMATE CHANGE RISK ATLAS & TOURISM: A SECTORAL APPROACH TO VULNERABILITY & RESILIENCE

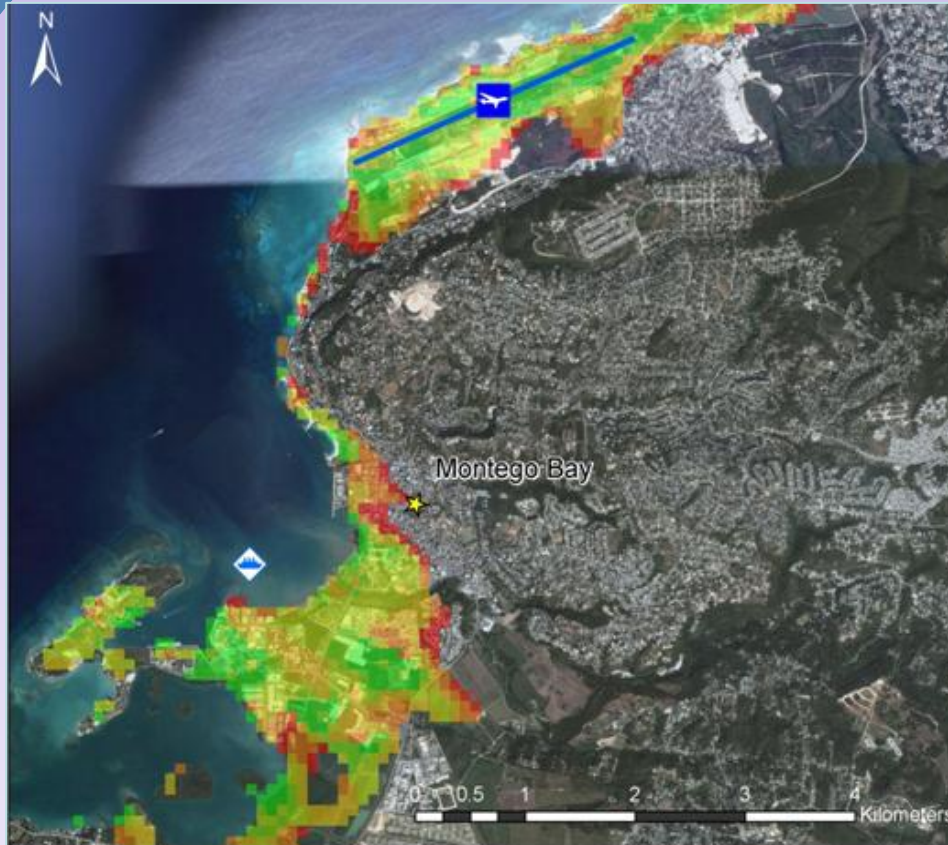
**United Nations World Tourism Organisation (UNWTO)  
Official Side Event**

COP18 Doha, Qatar Thursday 29<sup>th</sup> November, 2012

**Dr. MURRAY C. SIMPSON**

Chief Executive Officer, The CARIBSAVE Partnership and INTASAVE  
Senior Research Associate, University of Oxford

Protecting and enhancing the livelihoods, environments and economies of the Caribbean Basin



## CARIBSAVE Climate Change Risk Atlas

*... enhancing resilience  
and building capacity  
to respond to climate  
change across the  
Caribbean Basin.*

***...a pragmatic, evidence-based programme...practical and effective outcomes...  
...through the lens of tourism...***

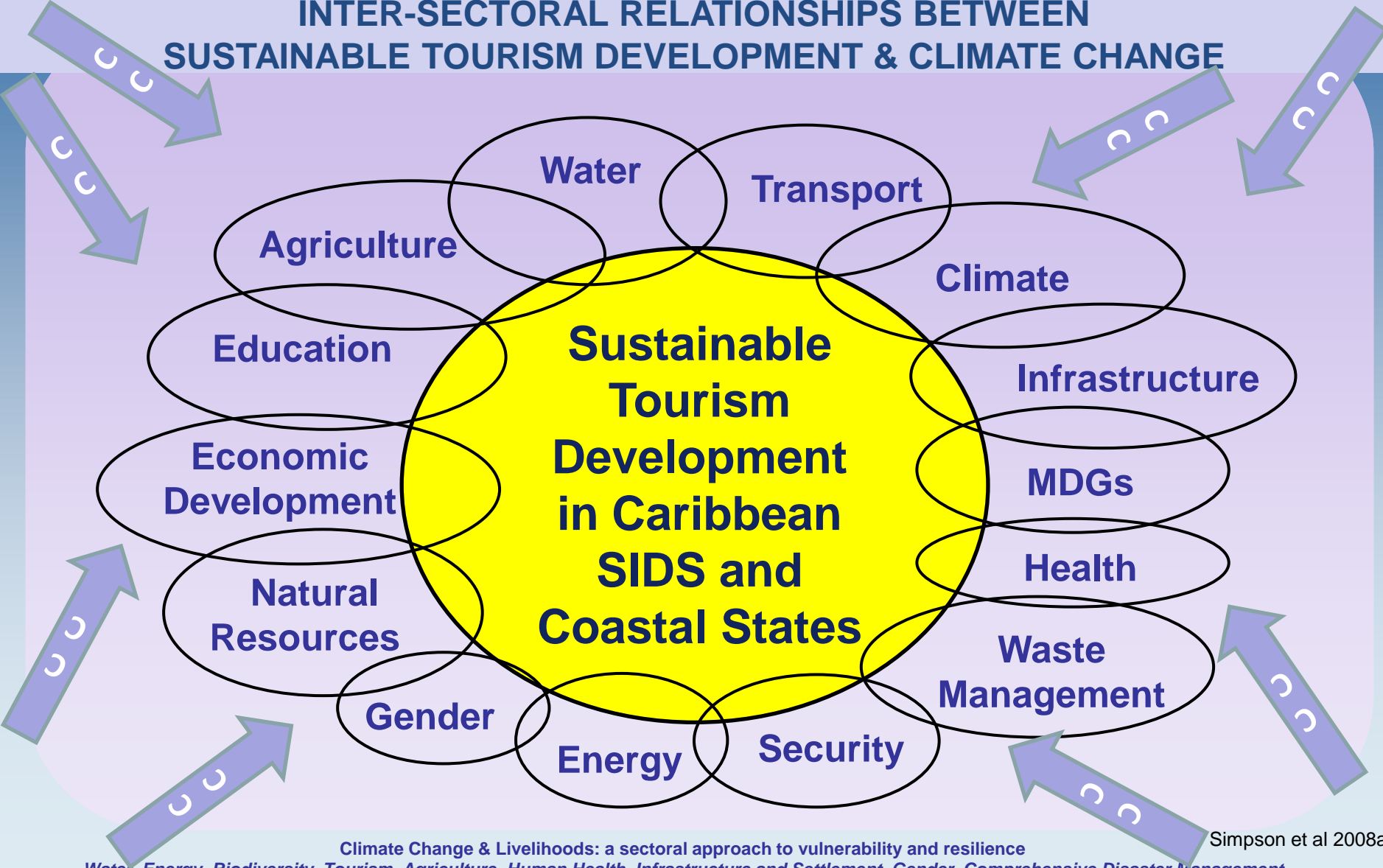
Protecting and enhancing the livelihoods, environments and economies of the Caribbean Basin

- **Thanks and Acknowledgements to the CCCCCs, UWI, National Govts. INSMET, Communities, Regional Organisations and the Private Sector**
- **Thanks to and Funded by the UK Department for International Development (DFID) and the Australian Agency for International Development (AusAID)**

# CARIBSAVE Climate Change Risk Atlas...

- Extensive diversity of robust and meaningful new data, **evidence-based pragmatic strategies**, and inter-sectoral capacity built and awareness raised across the region.
- Unique collation of open-source data, analysis and democratisation of science for practical use by wide audience of stakeholders; local, national, regional and global
- Leading to the implementation of practical and effective strategies for communities, policy-makers and the private sector

## INTER-SECTORAL RELATIONSHIPS BETWEEN SUSTAINABLE TOURISM DEVELOPMENT & CLIMATE CHANGE

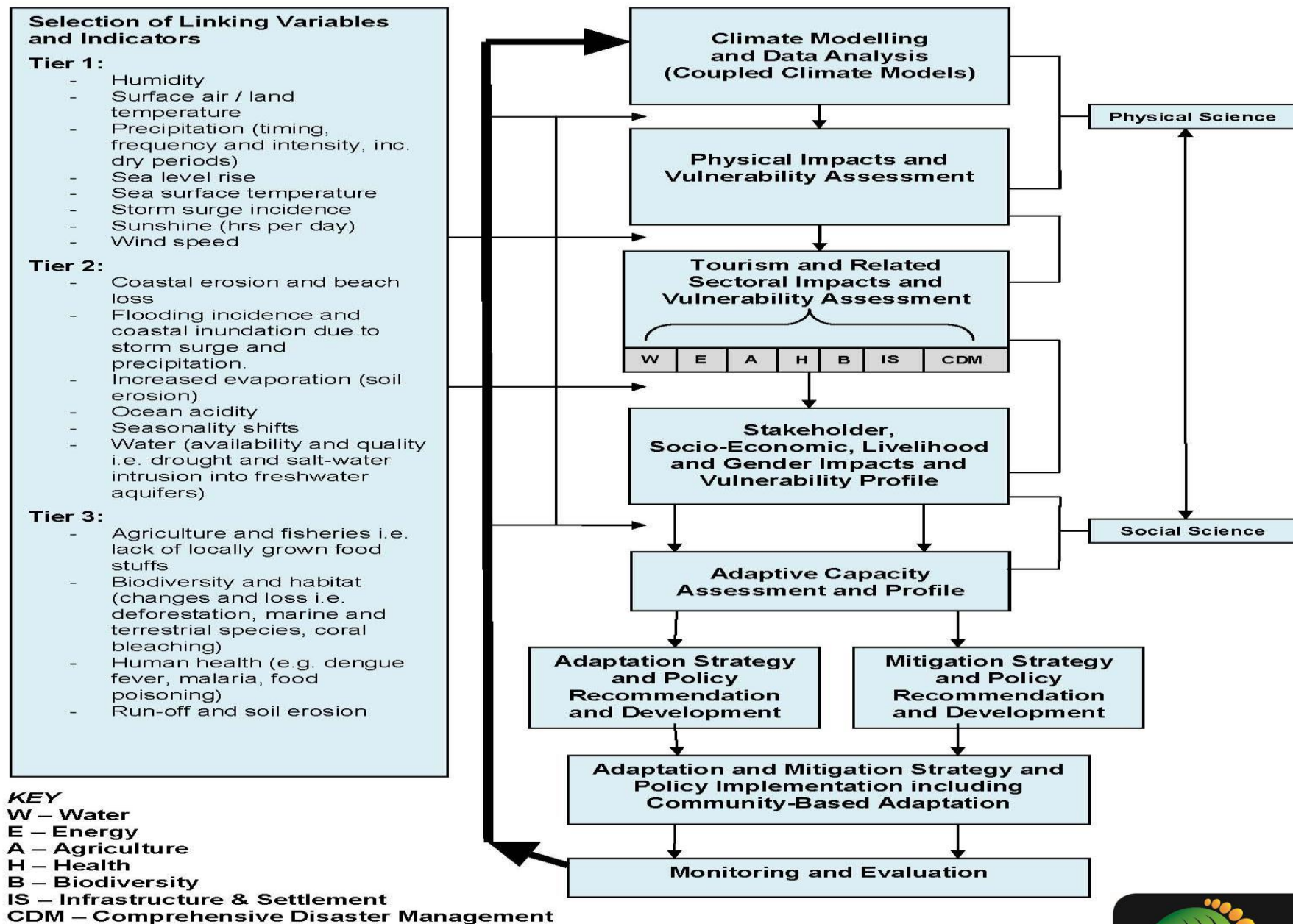


## Overall Approach

- Evidence-based, inter-sectoral, multi-stakeholder
- **Communities, Private Sector, Public Sector**
- Climate Modelling (Coupled GCMs-RCMs)
- Sectoral Vulnerability Assessments
- Adaptive Capacity Analysis
- Capacity Building, Education and Awareness
- Leading to Development and Implementation of No-Regrets, Low Risk Practical Actions



# CARIBSAVE CCCRA Analysis, Strategy Development, Implementation & Monitoring; component example



## RISK ATLAS PHASE I... : 15 COUNTRIES

- Barbados
- Anguilla
- Grenada
- Suriname
- Dominica
- Belize
- St. Vincent and the Grenadines
- Antigua and Barbuda
- Turks and Caicos Islands
- Jamaica
- Bahamas
- Nevis
- Dominican Republic
- St Kitts
- St. Lucia



Protecting and enhancing the livelihoods, environments and economies of the Caribbean Basin

# CCCRA Sectoral Approach...integral to Largest Caribbean Socio-Economic Sector (TOURISM)

- Livelihoods, Gender, Poverty and Development
- Coastal Vulnerabilities (Sea Level Rise (SLR))
- Water
- Energy
- Agriculture
- Health
- Biodiversity (Marine and Terrestrial)
- Infrastructure and Settlement
- Comprehensive Disaster Management

Protecting and enhancing the livelihoods, environments and economies of the Caribbean Basin

# National Stakeholder Participatory Workshops, On-going Meetings, Interviews and New Data



- High-level public sector, private sector, non-governmental organisations
- Pre-workshop Appraisal Document
- Adaptive Capacity Guiding Questions
- Key contacts for multi sectors
- One-to-One Interviews

Protecting and enhancing the livelihoods, environments and economies of the Caribbean Basin

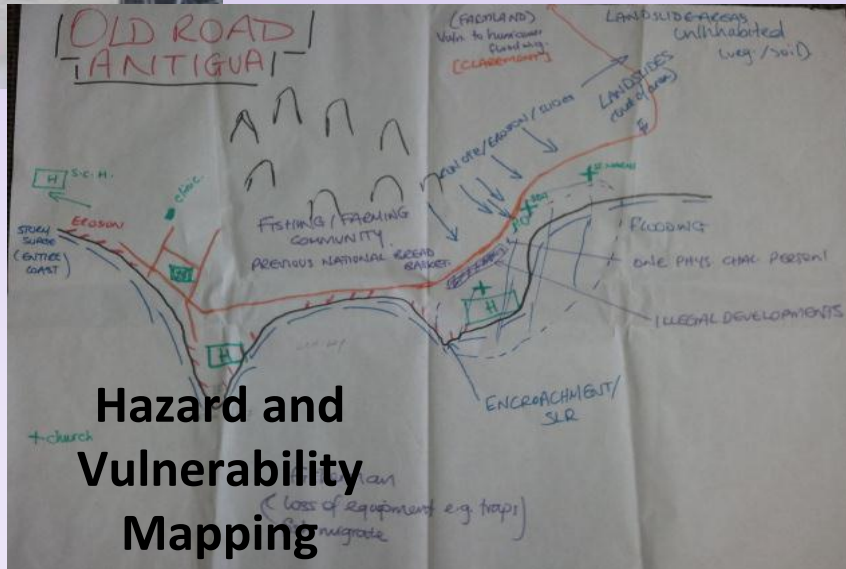
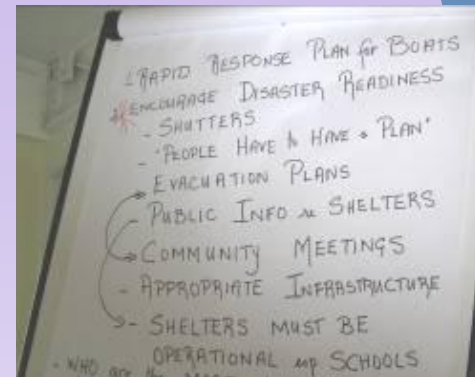
## Vulnerability Profiling inc...

- **Community Livelihoods, Gender, Poverty and Development**
- **Extensive sea level rise and storm surge fieldwork and analyses**
- **Infrastructure and settlements**



Protecting and enhancing the livelihoods, environments and economies of the Caribbean Basin

# Community Livelihoods, Gender, Poverty and Development



**Hazard and Vulnerability Mapping**

**Participatory workshop**





## #1 Summary Selection of Local, National and Regional Outcomes and Value–Adds

- **Climate variables and modelling** of GCMs and RCMs on a nation specific scale (primary and secondary)
- **Sea level rise and storm surge** data – on-ground Digital Elevation Modelling and analysis
- **Livelihoods, Gender, Poverty and Development** community-based data and analysis (regionally comparative 15 communities)
- **Cross-sectoral regional, national and community Evidence-Based Pragmatic Strategies**
- **Energy analysis** of tourism, the largest economic sector



## #2 Summary Selection of Local, National and Regional Outcomes and Value–Adds

- **Bridging gaps** between public, private sectors and communities in addressing climate change impacts (and physical and social science)
- **Data visualisation** techniques and democratisation of science delivery to inter-sectoral stakeholders (3 Films + Video Googles)
- **Capacity building** in wide selection of ministries, sectors and stakeholders including
  - **climate modelling** expertise & methods + research fellow (2 yrs)
  - **gender and climate change** expertise & methods + rsrch flw (2 yrs)
  - **coastal management agencies** methods and equip use + data
  - **community resilience**, awareness and techniques
  - **policy-makers and private sector** awareness, expertise & strategies

## #3 Summary Selection of Local, National and Regional Outcomes and Value-Adds

- **Meaningful Cross-Regional comparisons in multiple sectors** leading to identification of action, lesson learning and skills transfer
- **Created muscular platform for significant future work** e.g. implementation plan; sea level rise; costing of impacts; asset base
- **Proven methodologies** for vulnerability analysis and sectoral assessments
- **Cross-ministerial - inter-disciplinary robust evidence-based** approach to the largest socio-economic sector and related sectors

Protecting and enhancing the livelihoods, environments and economies of the Caribbean Basin

## RISK ATLAS PHASE II, III & IV

- Central America – 8 Countries
- Caribbean – 5 Countries
- Indian Ocean – Seychelles, Maldives, Mauritius
- African Nations – e.g. Kenya, Tanzania, South Africa



Protecting and enhancing the livelihoods, environments and economies of the Caribbean Basin

## SIGNIFICANT STRATEGIES DERIVED AND BEING IMPLEMENTED AS A RESULT OF THE RISK ATLAS e.g...

- **ParCA Project** – Jamaica and Tobago - IDRC
- **SEA-ARK Project** – Barbados, Bahamas, Belize and Jamaica - IDB
- **C-Fish Initiative** – Jamaica, St. Lucia, SVG, Grenada, Dominican Republic, Dominica, Bahamas, Turks and Caicos, +, - DFID/5Cs
- **CARICOM Research Call** Managing Partner – CDKN
- Comparative sites, knowledge and learning, capacity built





# ***Thank you***

**“I don’t care whether you are driving  
a hybrid or an SUV,  
if you’re heading for a cliff  
you’ve got to change direction.”**

Barack Obama 2009

Please visit [www.caribsave.org](http://www.caribsave.org) for further information or contact: [admin@caribsave.org](mailto:admin@caribsave.org)