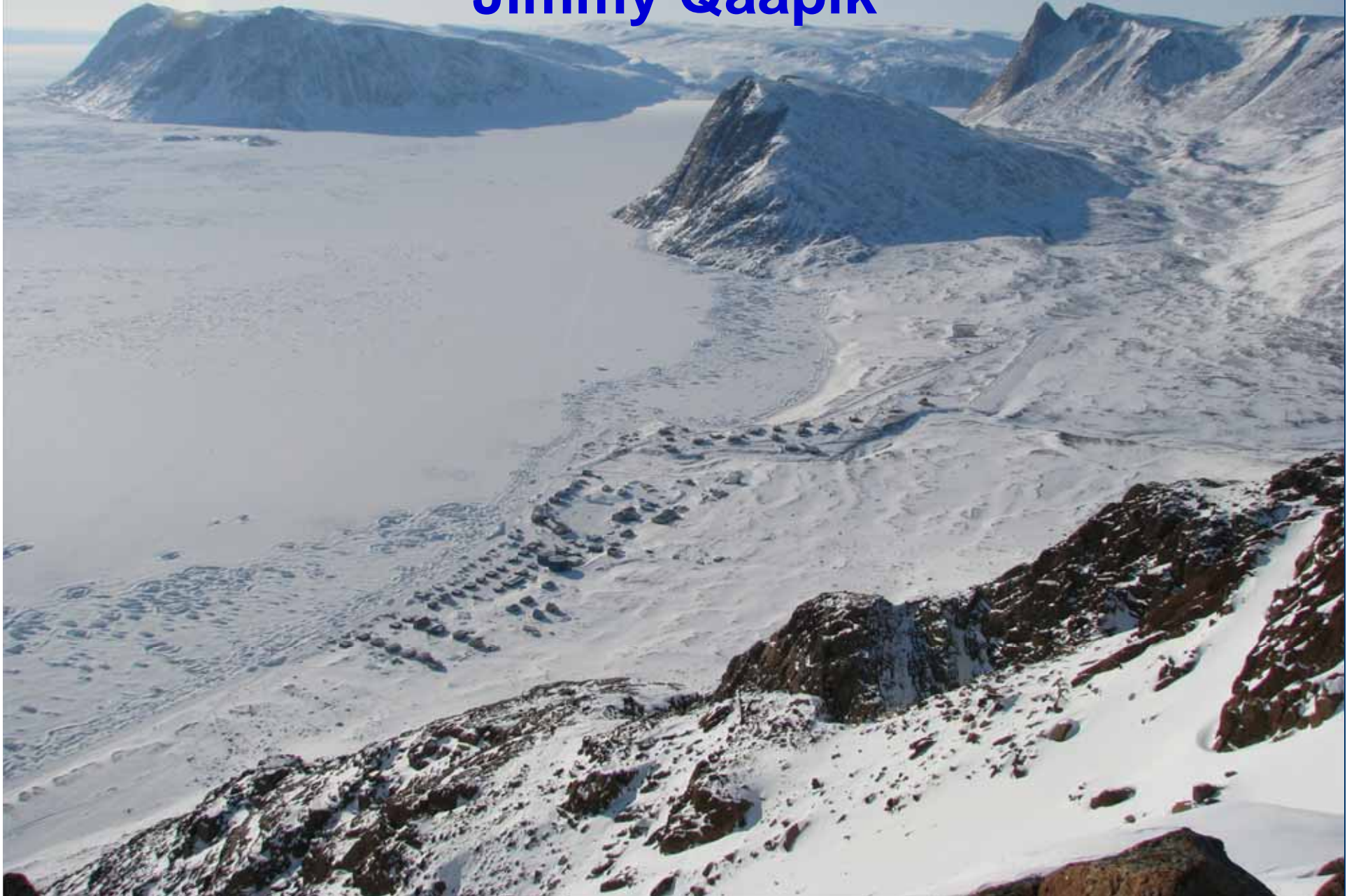


Adapting to Climate Change in Grise Fiord, Nunavut

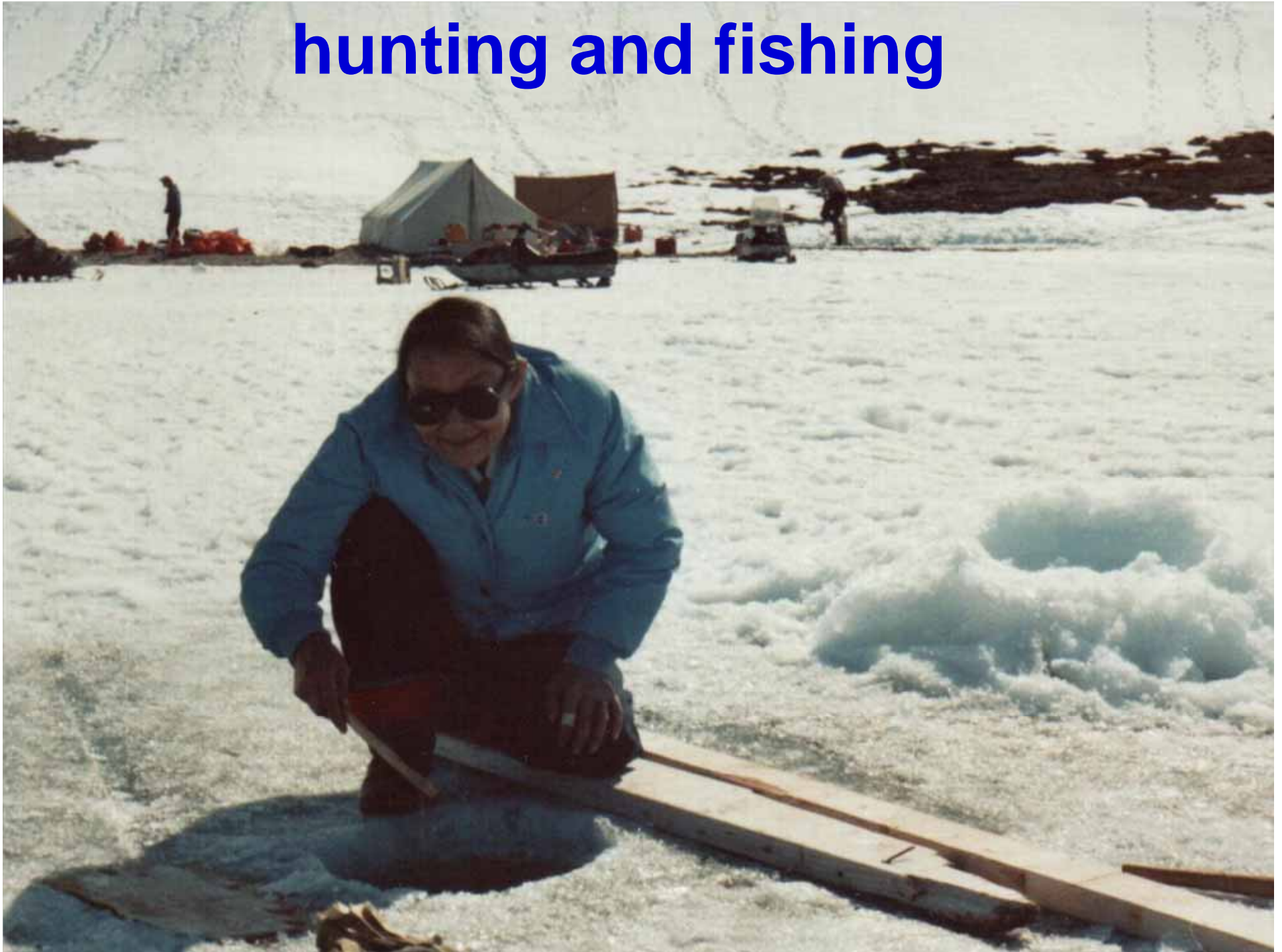
Jimmy Qaapik



jones sound



hunting and fishing



traveling on ice



transport



youth games





the best water



Grise Fiord – Sept 1980



Grise Fiord – Nov 2012



shoreline erosion





**September 2011
my (previous) shed...**



checking ice thickness

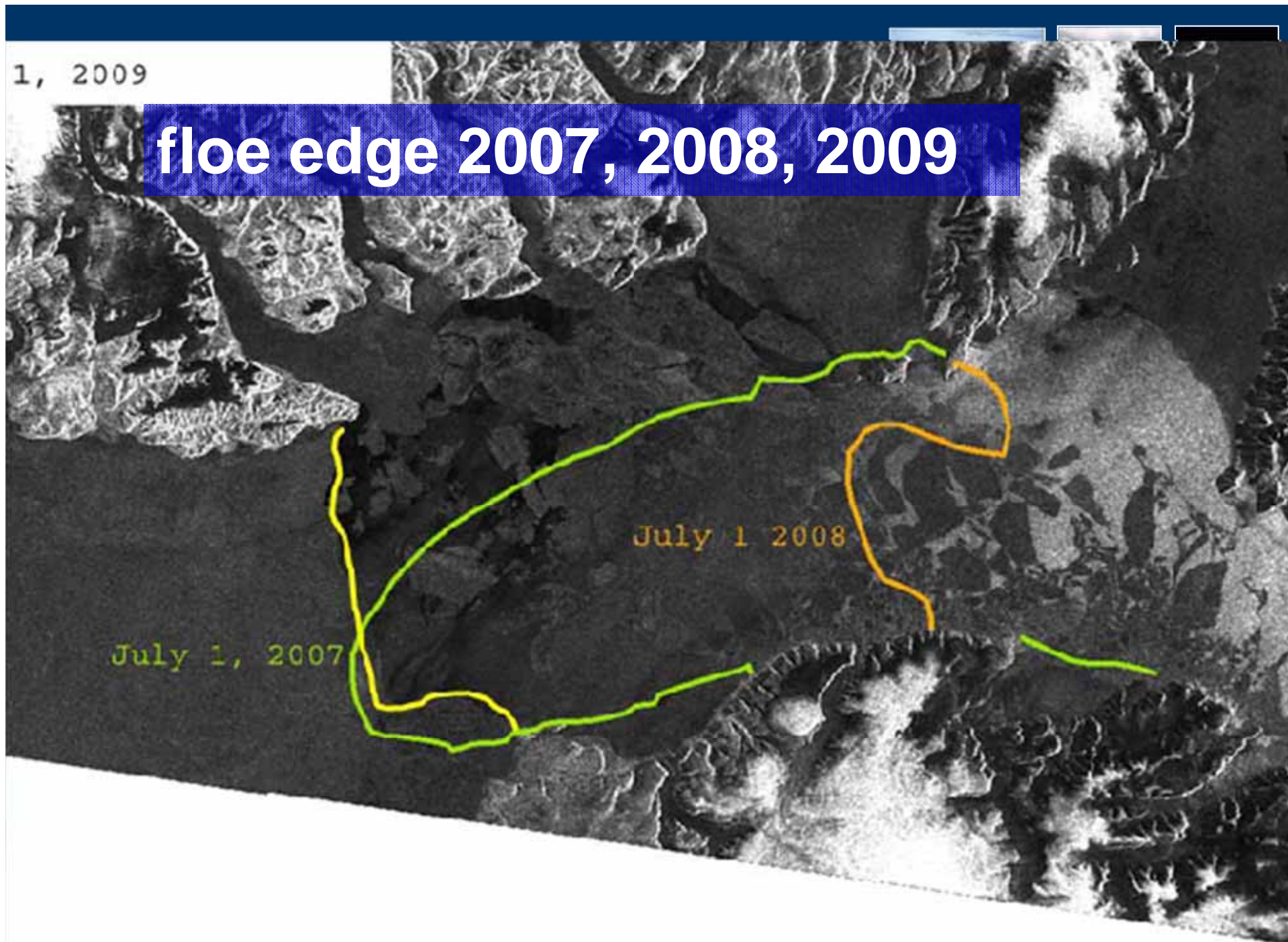


1, 2009

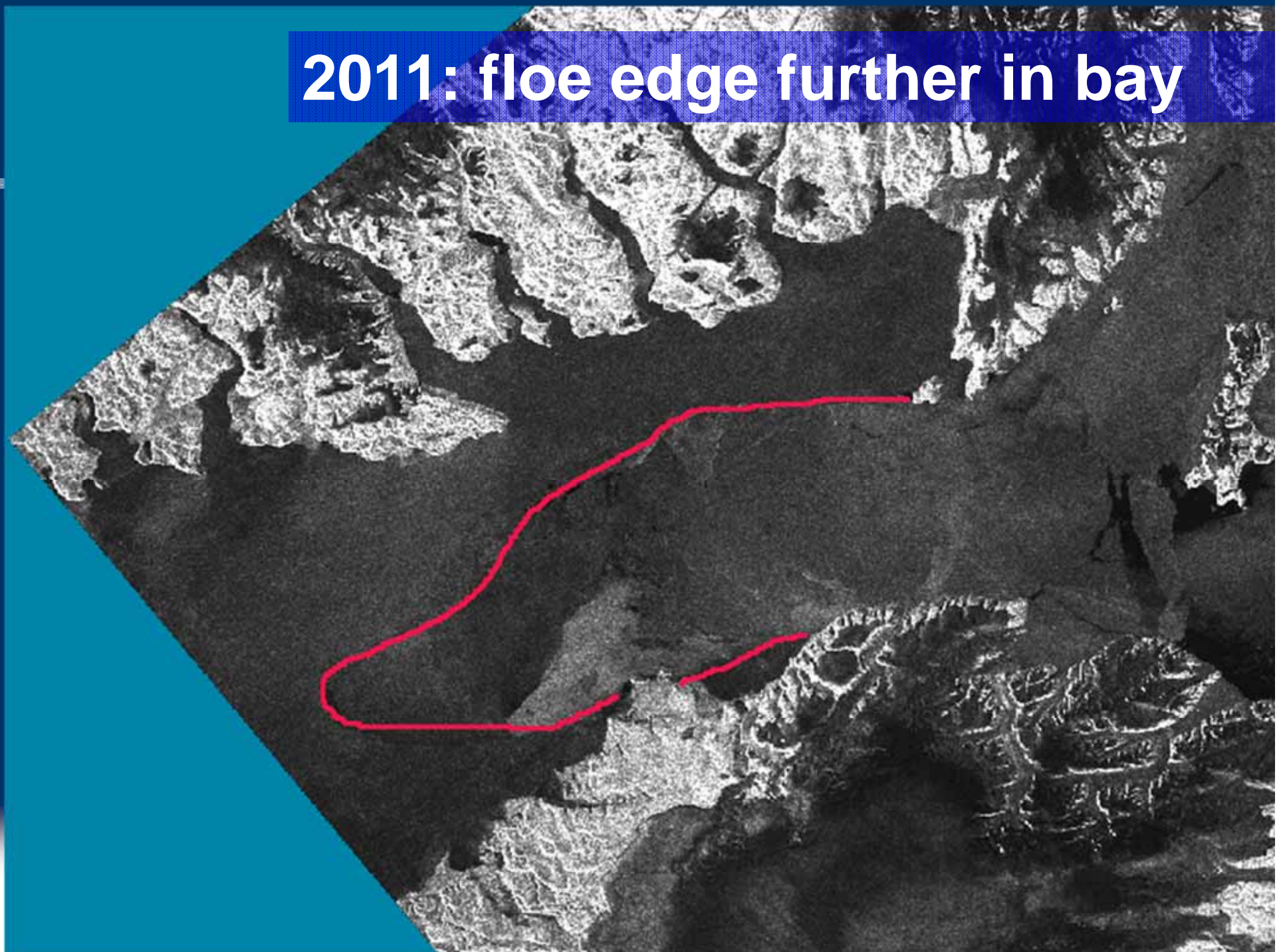
floe edge 2007, 2008, 2009

July 1 2008

July 1, 2007

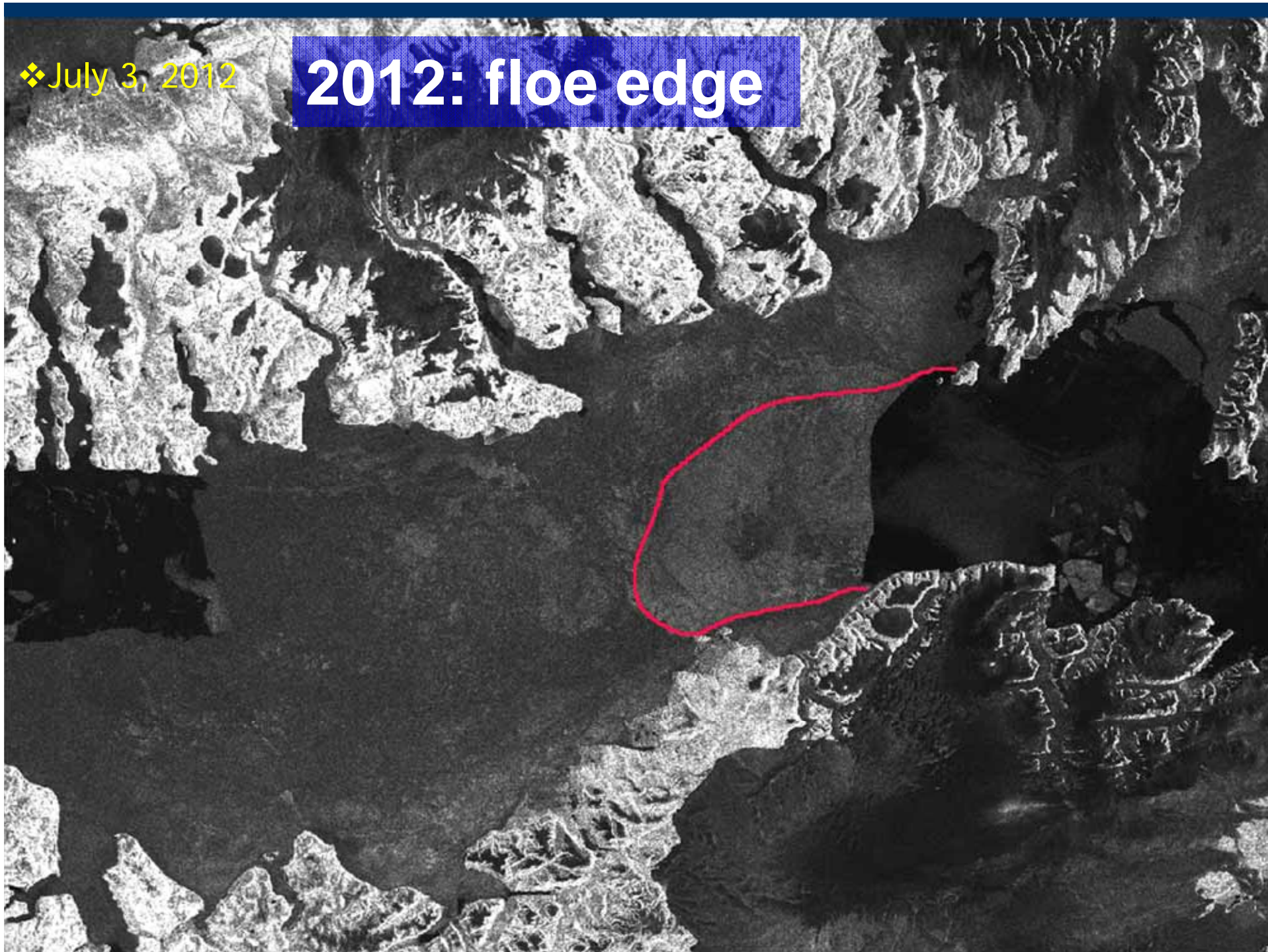


2011: floe edge further in bay



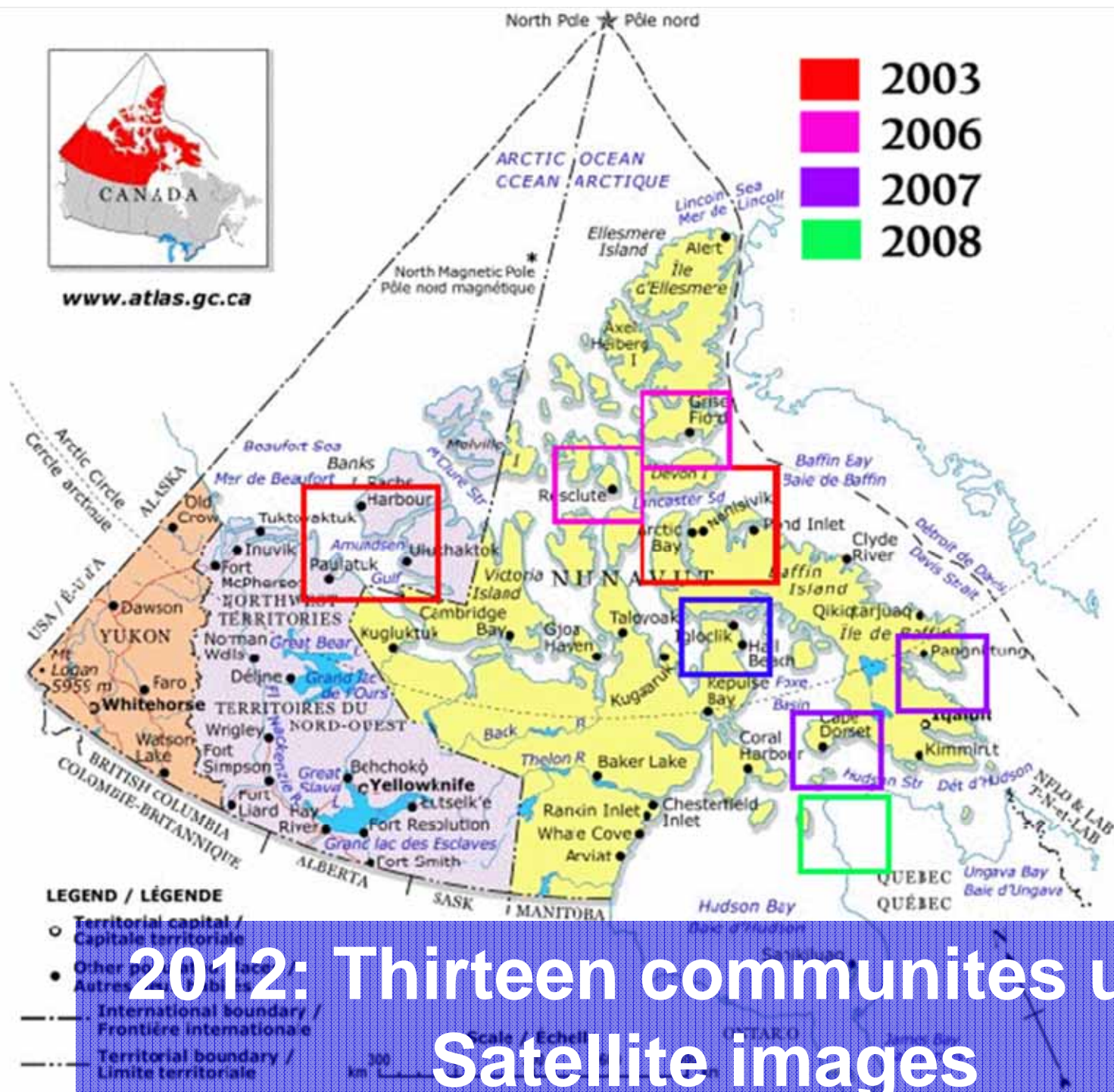
❖ July 3, 2012

2012: floe edge



An aerial photograph showing a rugged, rocky coastline. The land is composed of dark, jagged rock formations with some lighter-colored patches. A dark, calm body of water, likely a bay or fjord, is nestled between the rocks. The sky is a clear, pale blue. A semi-transparent blue banner with white text is overlaid on the upper left portion of the image.

2012: summer sea



thank you...



Users

- Hunters and Trappers
- Federal agencies
- Conservation officers
- Tourism and media
- Community schools