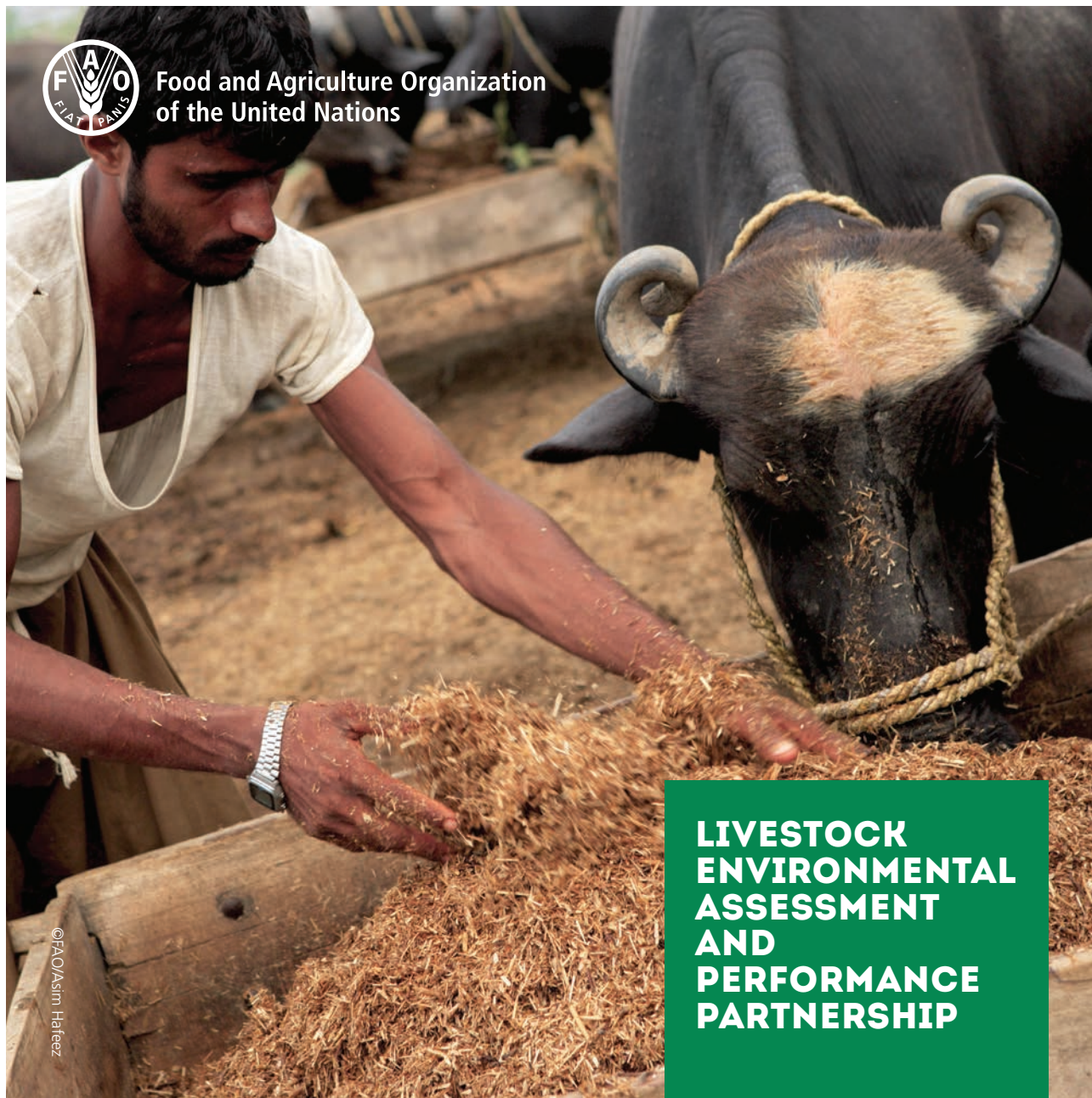




Food and Agriculture Organization  
of the United Nations



**LIVESTOCK  
ENVIRONMENTAL  
ASSESSMENT  
AND  
PERFORMANCE  
PARTNERSHIP**



# ABOUT





## PROMOTING SUSTAINABLE LIVESTOCK PRODUCTION

The Livestock Environmental Assessment and Performance (LEAP) Partnership is a multi-stakeholder initiative that seeks to improve the environmental sustainability of the livestock sector through better methods, metrics and data.

## BETTER METRICS FOR BETTER DECISIONS

LEAP products are essential to address the environmental impact of livestock sector, while improving the efficiency and profitability of livestock supply chains.





## **BUILDING GLOBAL CONSENSUS**

LEAP is a voluntary and collaborative partnership, based on the principle that all participants have an equal say in decision making. Approval by consensus is the basis to promote changes within the sector.

This approach is reflected in our organizational structure:

### **STEERING COMMITTEE**

Represented by governments, private sector and civil society, it provides overall guidance for the activities of the Partnership and oversees their implementation.

### **SECRETARIAT**

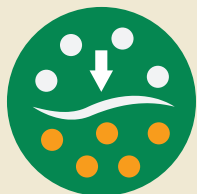
Hosted by the Food and Agriculture Organization of the United Nations (FAO), it ensures that the work of the Partnership is based on international best practices.

### **TECHNICAL ADVISORY GROUPS (TAGs)**

Experts from various backgrounds and areas of research work together to provide scientific and technical advice.

**LEAP IS A CROSS-SECTOR  
PARTNERSHIP THAT BUILDS GLOBAL  
CONSENSUS ON ADDRESSING  
ENVIRONMENTAL IMPACT OF  
LIVESTOCK**

## THEMATIC AREAS



Soil Carbon  
Stock Changes



Nutrient  
cycles



Water  
footprinting



Biodiversity



Feed  
additives



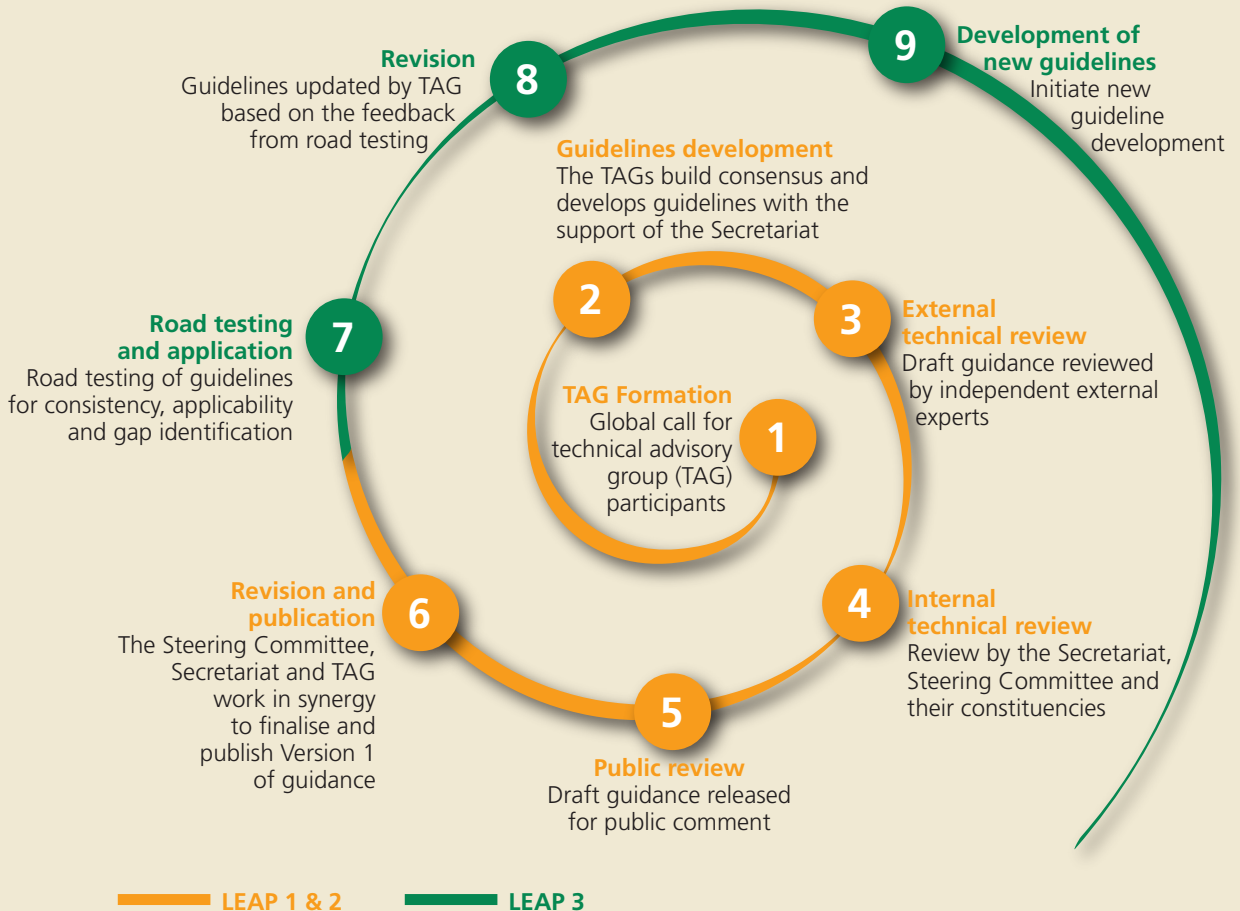
Climate  
change

**WE DEVELOP  
METHODOLOGIES AND  
GUIDANCE TO ACCELERATE  
THE IMPLEMENTATION OF  
BEST PRACTICES ACROSS  
LIVESTOCK SUPPLY CHAINS**



# DEVELOPMENT PROCESS

The LEAP guidance is developed using a multi-stakeholder process with a multi-tiered review structure where drafts are modified and consulted on iteratively.





## CONTINUOUS IMPROVEMENT

LEAP, through its work programme from 2019 to 2021, contributes to consolidate the current guidance through road testing and dissemination of LEAP guidelines and development of tools in support of guideline application and uptake.

**LEAP3** aims to collect feedback for the improvement of the technical documents and provide guidance for the adoption and application of LEAP guidelines at various scales.

**ROAD TESTING AND REVISION  
OF LEAP GUIDELINES TO ENSURE  
CLEAR, APPLICABLE AND  
COHERENT TECHNICAL GUIDANCE**





## HOW TO JOIN

The Partnership is open to all organizations and governments.

As a LEAP member, your organization will have voice, get first-hand information on activities, and participate in the nomination of experts for the technical advisory groups.

---

More information on how to engage in this global initiative can be obtained at:

[www.fao.org/partnerships/leap/en](http://www.fao.org/partnerships/leap/en)  
[Livestock-Partnership@fao.org](mailto:Livestock-Partnership@fao.org)