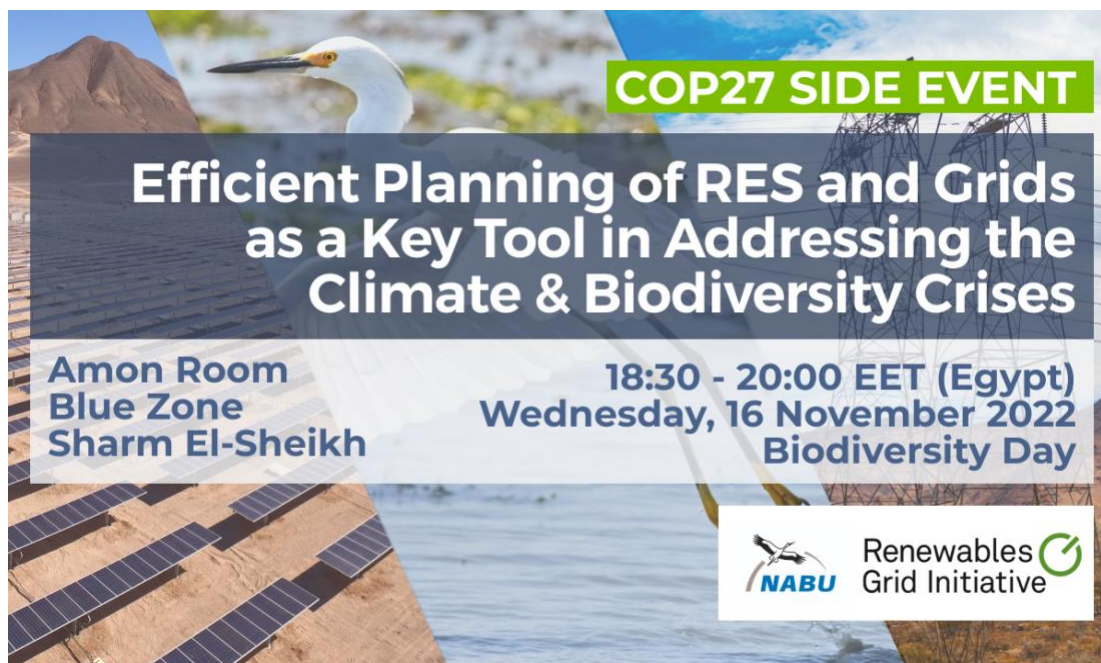


Efficient planning of RES and grids as a key tool in addressing the climate & biodiversity crises

RGI and NABU COP side event 2022



1. Submitted Abstract

Integrated and coordinated systems planning can strongly contribute to addressing the climate and biodiversity crises while scaling/speeding up deployment of RES and electricity grids. Optimisation of resources should therefore be an integral part of the planning. Positive examples already exist.

Categories: Delivering on mitigation ambition; Energy

2. Colour scheme

- Wednesday, 16 November 2022 – Biodiversity Day
- Timing: 18:30-20:00 EET
- Room: Amon (capacity: 150)
- Find out how to join or follow online here: <https://unfccc.int/process-and-meetings/conferences/side-events-and-exhibits>

3. Event description

Our COP side event 'Efficient planning of RES and grids as a key tool in addressing the climate & biodiversity crises' will centre around the question of how the inclusion of biodiversity – and specifically sensitivity mapping – into spatial planning processes can ensure safe siting and speed up the deployment of renewable generation and electricity grids.

Our keynote speakers from NABU and the Convention on Migratory Species will discuss the importance of integrating biodiversity and share strategic approaches that show how to practically implement related practices, in particular in the context of wind farm and grid development. Their inputs will be followed by a panel that will debate how biodiversity-conscious energy infrastructure planning can be achieved along with the additional task of jointly planning generation and transmission infrastructure. The panel will also discuss how this will scale and speed up deployment of RES and electricity grids as well as contribute to addressing the climate and biodiversity crises.

4. Agenda / Speakers

18:30-18:35	Welcome & Setting the Scene <ul style="list-style-type: none"> Antonella Battaglini CEO, Renewables Grid Initiative
18:35-18:50	Keynote: How to improve RES and grid planning by including biodiversity <ul style="list-style-type: none"> Jörg Andreas Krüger President, NABU
18:50-19:05	Keynote: Ensuring best practice is promoted in energy planning: the case of the CMS Energy Task Force <ul style="list-style-type: none"> Iván Ramírez Head of Avian Team at the Convention for Migratory Species (CMS)
19:05-19:55	Moderated panel discussion: How to implement integrated RES and grid planning using sensitivity mapping <ul style="list-style-type: none"> Jutta Paulus MEP, Greens Rob McDonald Managing Director Transmission, Scottish and Southern Energy Jörg Andreas Krüger President, NABU Iván Ramírez Head of Avian Team at the Convention for Migratory Species (CMS) <p>Moderated by Antonella Battaglini CEO, RGI</p> <p>Q&A with audience if time allows</p>
19:55-20:00	Wrap up & Outlook <ul style="list-style-type: none"> Antonella Battaglini CEO, Renewables Grid Initiative