

# COMIFAC Side Event COP 15, Copenhagen



## REDD

Reducing Emissions from  
Deforestation and Degradation

## ESA REDD Extension Project: Republic of Congo and Gabon

Dr. Oyo, Rep of Congo Climate Focal Point

Dr. Rene Siwe, GAF AG

Consortium led by:



Project supported by:



Project Part of



# Context



Surface Area: 342.000 km<sup>2</sup>

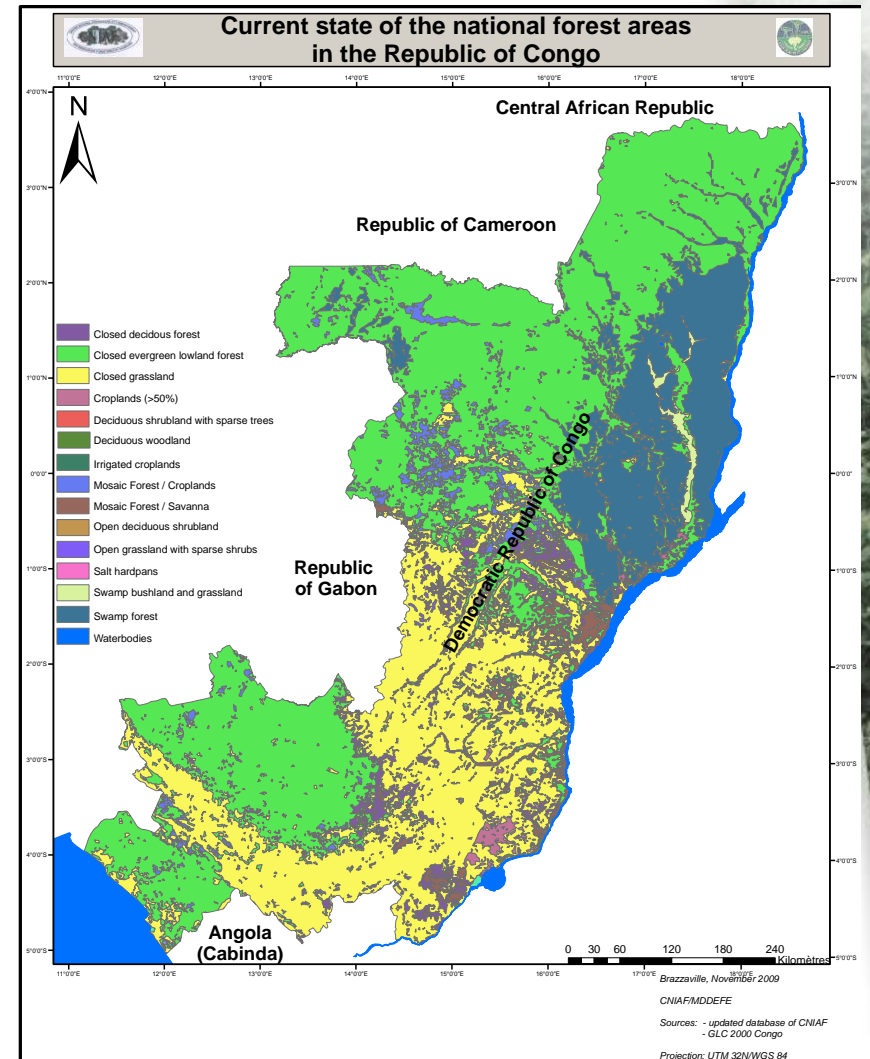
Population: 2.900.000 inhabitants

Pop: 10 inhab/km<sup>2</sup>

Urban Population: 55%

Rural Population: 45%

Forest Area: 22.471.271 ha



# Sustainable Forest Management & Conservation Efforts

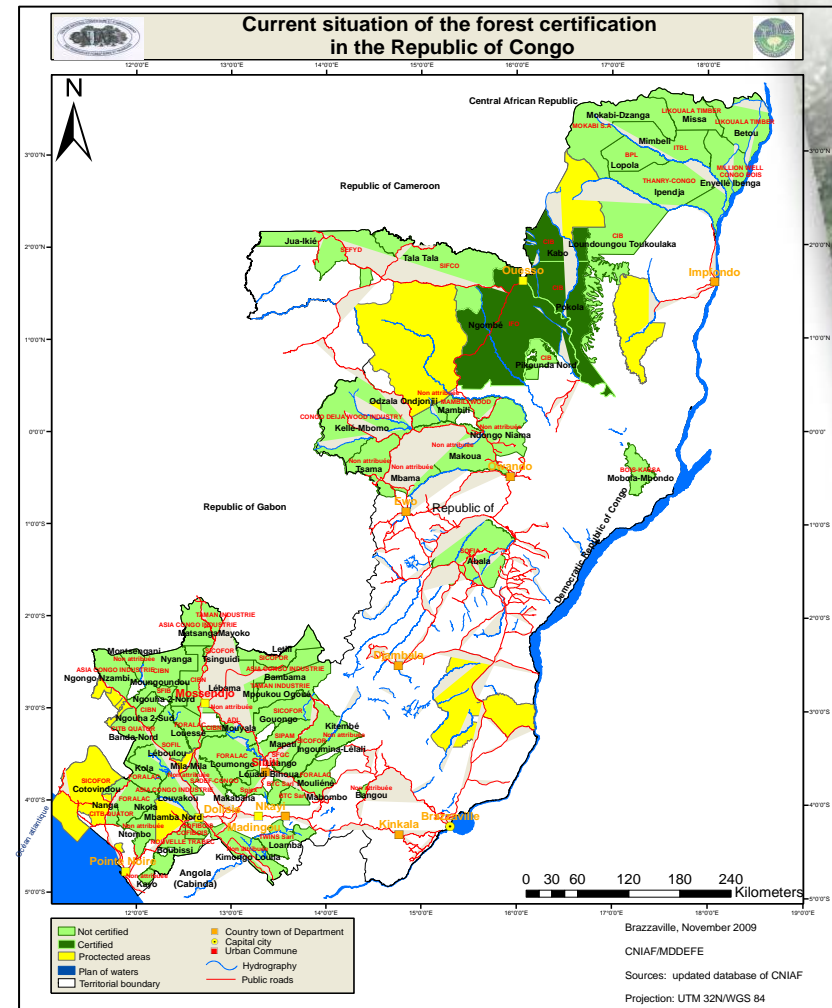
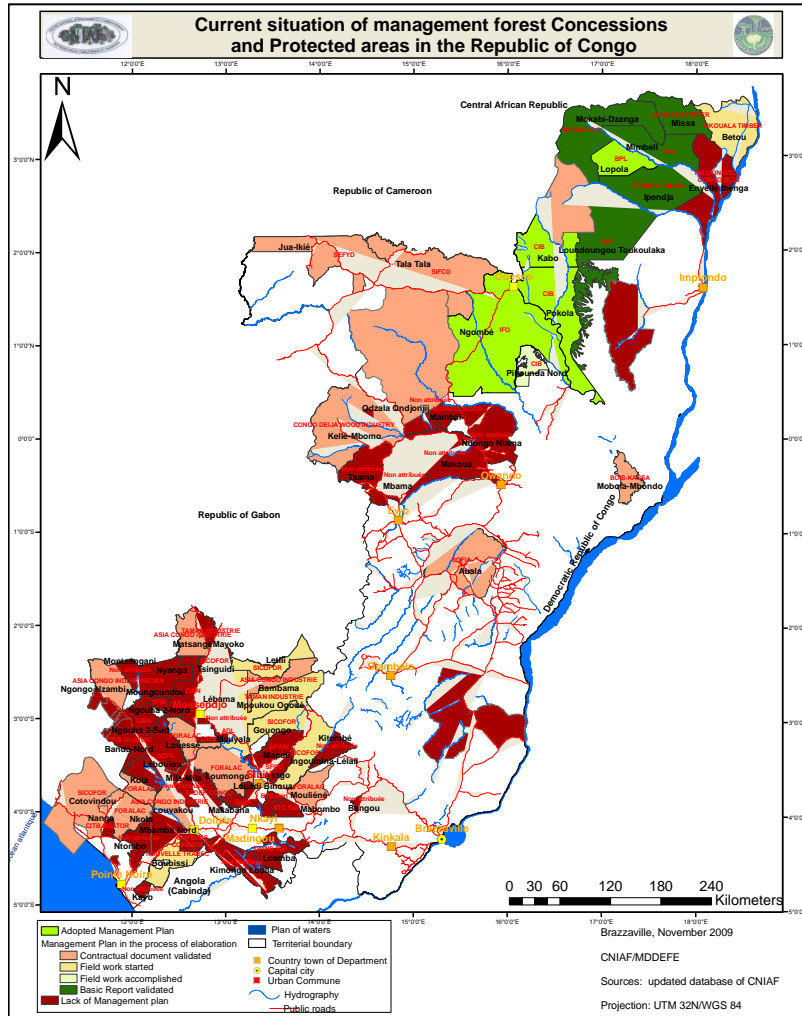
---



The permanent forest area is being defined:

Surface area of the country	342.000 Km <sup>2</sup>
Total forest area	22.471.271 ha
New areas under forest management	7.217.891 ha
Areas already under forest management	2.278.458 ha
Areas under conservation	3.513.438 ha
Certified forest areas	2.077.648 ha

# Current State of FMU, Protected and Certified Forest Areas



# Context of the National REDD Process

---



- REDD process will be officially launched in January 2010 (2<sup>nd</sup> week) with a national workshop.
- The present context of the process is as follows:
- The R-PIN has been elaborated and approved;
- A 200.000 dollars agreement has been signed for the preparation of the R-PP;
- A national REDD coordination has been created;
- The texts for the National REDD committee and the REDD technical Committee will soon be endorsed.

# Background: GMES supports REDD Developments

---



- The Global Monitoring for Environment and Security (GMES) is a joint EU/ESA initiative which aims at establishing operational information services for global environmental monitoring
- The ESA supported GMES Service Element Forest Monitoring (GSE FM) supports UNFCCC/KP
- REDD pilot projects were developed with user commitments: Bolivia and Cameroon (2007).
- ESA REDD pilots extended to Rep of Congo and Gabon with user commitment (2009 – 2012).



# Objectives

---



## Overall Aim:

- **Set up a pre-operational system for monitoring forest cover and forest changes within the REDD framework**

## Three Main Tasks:

- **Institutional Arrangements & Stakeholder analysis**
- **Deforestation and degradation mapping**
- **Capacity Building/Technology Transfer**

# Stakeholder Analysis/Institutional Arrangements

---



- **Assess stakeholder needs: specific policy drivers, assess working practices, decision making cycles, & technical capacity for EO technologies**
- **Technical specifications for REDD services/products to be defined with the user**
- **Support national REDD Committees to steer the REDD activities**
- **Co-ordinate and develop synergies with donors and stakeholders involved in forest/climate projects to avoid duplication of efforts and sustainability of projects**



# Deforestation/Degradation Mapping

---



## Deforestation:

- Application of EO for historical baseline assessments, undertake deforestation mapping: 1990-2000-2008.
- Forest/non-forest maps (1990 – 2000 and 2000 – 2008)
- Forest cover changes classified into the IPCC compliant classes: cropland; wetland; grassland; settlement and other land.

## Degradation:

Spectral Mixture Analysis (based on Souza et al, 2007 methods) to be tested; Annual/Biannual Mapping

# Capacity Building

---



## Activities to be undertaken:

- An assessment of in-country capacity (human, institutional and information capacities) for EO forest monitoring.
- Elaboration of capacity building strategy in collaboration with the UNFCCC focal point.
- Seminars & workshops to train national counterparts on the methods employed in the assessment of deforestation and degradation.

# Envisaged Benefits

---



- **The GSE FM REDD services will provide a frame for wall-to-wall national forest monitoring systems.**
- **The results will provide feasibility assessment of operational national level monitoring of deforestation/degradation**
- **GSE FM REDD services will provide countries with both the technical steps and empirical information to support their negotiations during the COPs.**